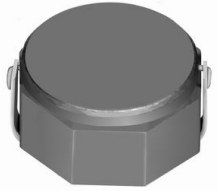




**THE DATASHEET OF
CDRH8D43NP-2R0NC**



SMD Power Inductor CDRH8D43



Description

- Ferrite drum core construction.
- Magnetically shielded.
- L × W × H: 8.3 × 8.3 × 4.5 mm Max.
- Product weight: 0.93g(Ref.)
- Moisture Sensitivity Level: 1
- RoHS compliance.

Environmental Data

- Operating temperature range: -40°C ~ +100°C (including coil's self temperature rise)
- Storage temperature range: -40°C ~ +100°C
- Solder reflow temperature: 260 °C peak.

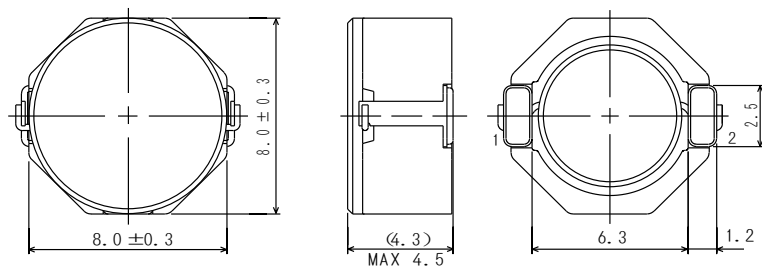
Packaging

- Carrier tape and reel packaging
- 13" diameter reel
- 500pcs per reel

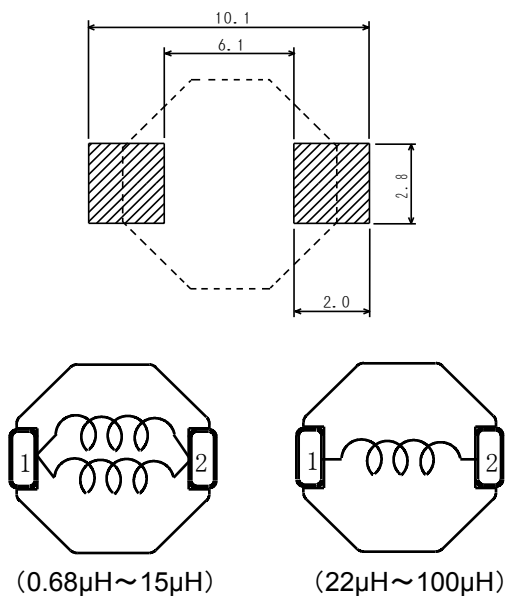
Applications

- Ideally used in Mobile phone, MP3, PDA , HDD, DSC/DVC, etc as DC-DC converter inductors.

Dimension - [mm]



Land pattern and Schematics - [mm]





Electrical Characteristics

| Part Name | Stamp | Inductance (μH) [within] ※1 | D.C.R. ($\text{m}\Omega$) Max. (Typ.) (at 20°C) | Saturation Current (A) ※2 (Typ.) | Temperature Rise Current (A) ※3 |
|------------------|-------|--|---|--|---------------------------------------|
| CDRH8D43NP-R68NC | R68 | $0.68 \pm 35\%$ | 9.5(7.0) | 9.0(10.80) | 7.60 |
| CDRH8D43NP-1R2NC | 1R2 | $1.2 \pm 35\%$ | 12.2(9.0) | 8.0(10.50) | 7.00 |
| CDRH8D43NP-2R0NC | 2R0 | $2.0 \pm 30\%$ | 14(11) | 7.0(9.00) | 6.30 |
| CDRH8D43NP-3R9NC | 3R9 | $3.9 \pm 30\%$ | 19(15) | 5.9(7.50) | 4.90 |
| CDRH8D43NP-4R7NC | 4R7 | $4.7 \pm 30\%$ | 22(17) | 5.6(7.20) | 4.60 |
| CDRH8D43NP-6R8NC | 6R8 | $6.8 \pm 30\%$ | 25(20) | 4.4(5.80) | 4.30 |
| CDRH8D43NP-100NC | 100 | $10 \pm 30\%$ | 36(29) | 4.0(5.50) | 3.50 |
| CDRH8D43NP-150NC | 150 | $15 \pm 30\%$ | 53(42) | 2.9(3.60) | 2.55 |
| CDRH8D43NP-220NC | 220 | $22 \pm 30\%$ | 75(60) | 2.6(3.25) | 2.10 |
| CDRH8D43NP-330NC | 330 | $33 \pm 30\%$ | 125(100) | 2.2(2.60) | 1.55 |
| CDRH8D43NP-470NC | 470 | $47 \pm 30\%$ | 150(120) | 1.8(2.25) | 1.42 |
| CDRH8D43NP-680NC | 680 | $68 \pm 30\%$ | 240(190) | 1.5(1.76) | 1.15 |
| CDRH8D43NP-101NC | 101 | $100 \pm 30\%$ | 360(290) | 1.3(1.55) | 0.88 |

※1. Inductance measuring conditions at 100kHz.

※2. Saturation current: The DC current at which the inductance decreases to 65% of its nominal value.

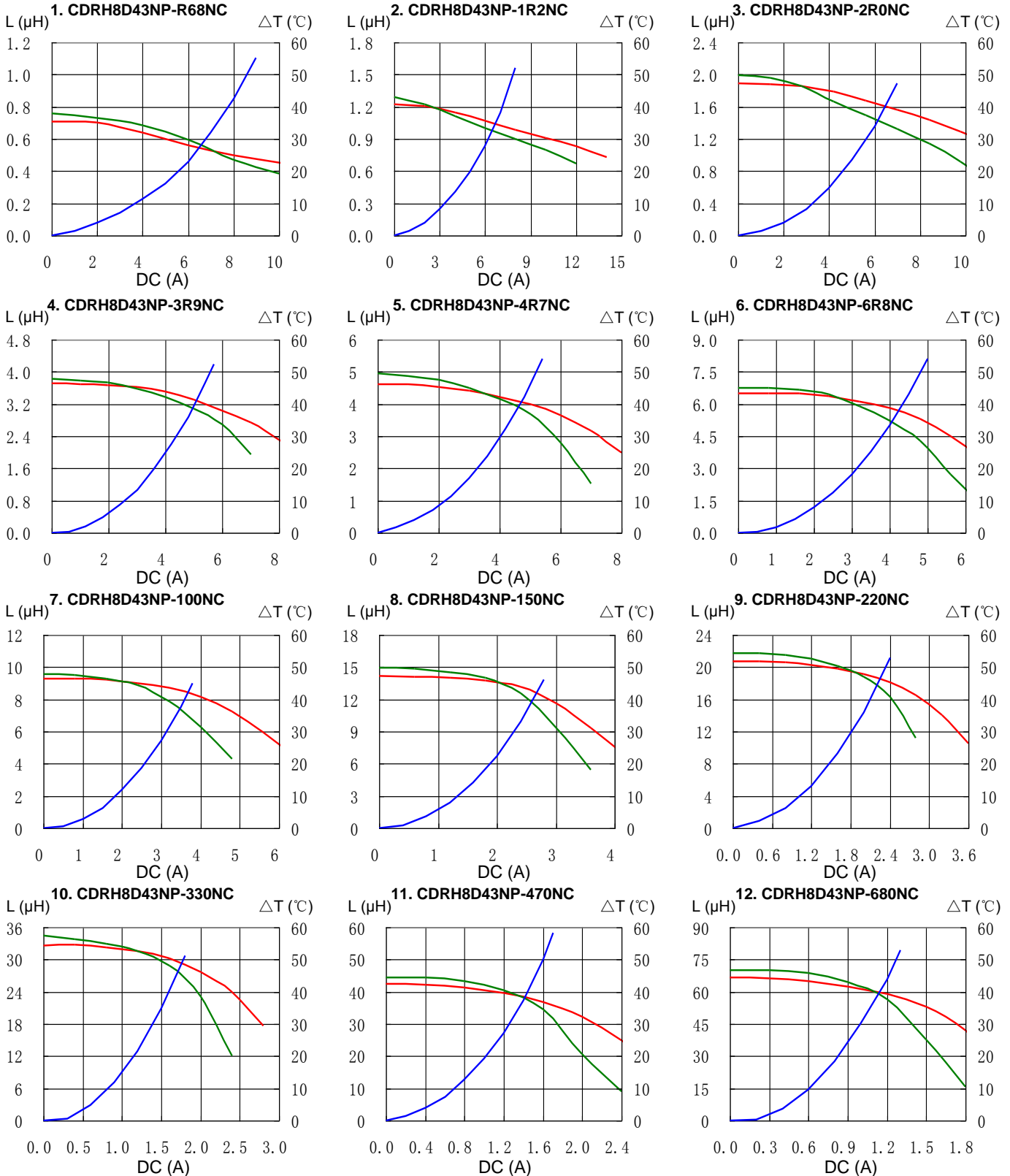
※3. Temperature rise current: The actual DC current at which the temperature rise is $\Delta t = 40^\circ\text{C}$. ($T_a = 20^\circ\text{C}$)

SMD Power Inductor CDRH8D43

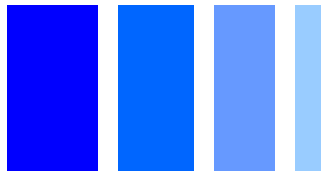


Saturation Current & Temperature Rise Graph

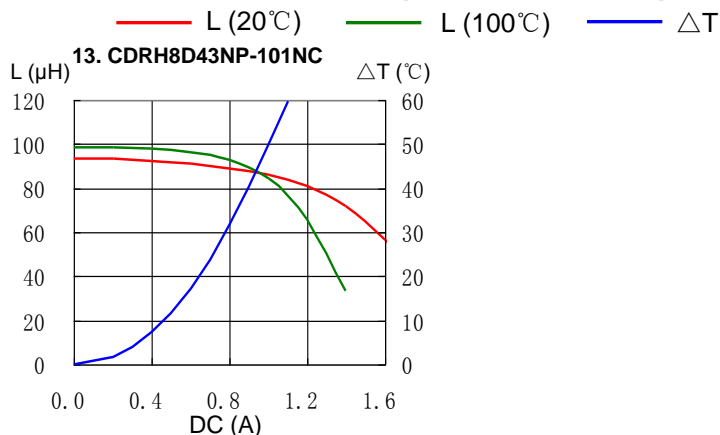
— L (20°C) — L (100°C) — ΔT



SMD Power Inductor CDRH8D43

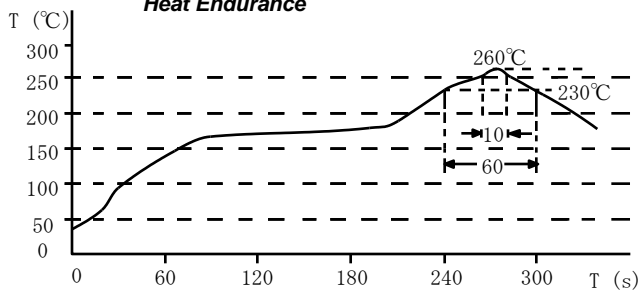


Saturation Current & Temperature Rise Graph

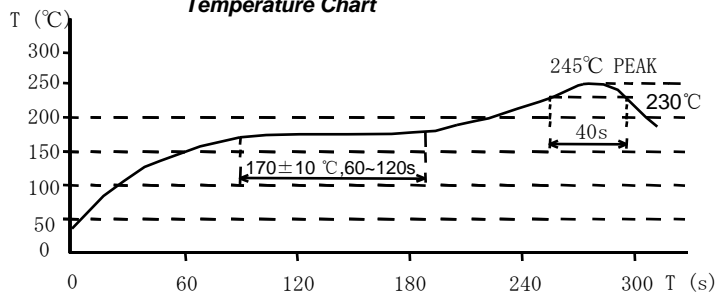


Solder Reflow Condition

Heat Endurance



Temperature Chart



Please refer to the sales offices on our website - <http://www.sumida.com>

Hong Kong

Tel.+852-2880-6781
FAX.+852-2565-9600
sales@hk.sumida.com

Saitama(Japan)

Tel.+81-48-691-7300
FAX.+81-48-691-7340
sales@jp.sumida.com

Chicago

Tel.+1-847-545-6700
FAX. +1-847-545-6720
sales@us.sumida.com

Shanghai

Tel.+86-21-5836-3299
FAX.+86-21-5836-3266
shanghai.sales@cn.sumida.com

Seoul

Tel.+82-2-6237-0777
FAX.+82-2-6237-0778
sales@kr.sumida.com

Obernzell

Tel.+49-8591-937-0
FAX. +49-8591-937-103
contact@eu.sumida.com

Shenzhen

Tel.+86-755-8291-0228
FAX.+86-755-8291-0338
shenzhen.sales@cn.sumida.com

Singapore

Tel.+65-6296-3388
FAX.+65-6841-4426
sales@sg.sumida.com

Neumarkt

Tel.+49-9181-4509-110
FAX. +49-9181-4509-310
infocomp@eu.sumida.com

Taipei

Tel.+886-2-8751-2737
FAX.+886-2-8751-2738
sales@tw.sumida.com

San Jose

Tel.+1-408-321-9660
FAX.+1-408-321-9308
sales@us.sumida.com

Looking for pricing, stock, or lifecycle information?

Click below to explore more details on WIN SOURCE:

- ⊖ [View CDRH8D43NP-2R0NC on WIN SOURCE](#)
- ⊖ [Sumida America Components Inc. Information](#)

Optimize Your Supply Chain with WIN SOURCE Solutions

- ✓ Global Sourcing Solution
- ✓ Obsolete Management
- ✓ Cost Control Management
- ✓ Shortage Management
- ✓ Alternative Solution
- ✓ Excess Inventory Management