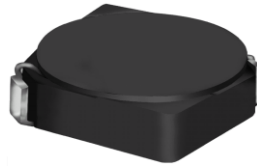




THE DATASHEET OF CDRH4D18NP-150NC



SMD Power Inductor CDRH4D18



Description

- Ferrite drum core construction.
- Magnetically shielded.
- L × W × H: 5.0 × 5.0 × 2.0 mm Max.
- Product weight: 137mg(Ref.)
- Moisture Sensitivity Level: 1
- RoHS compliance.

Environmental Data

- Operating temperature range: -40°C ~ +100°C (including coil's self temperature rise)
- Storage temperature range: -40°C ~ +100°C
- Solder reflow temperature: 260 °C peak.

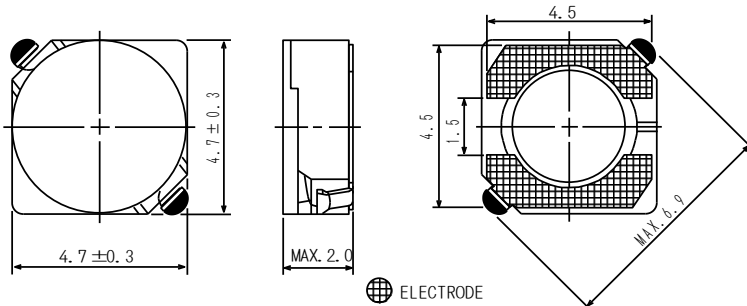
Packaging

- Carrier tape and reel packaging
- 7.0" diameter reel
- 1000pcs per reel

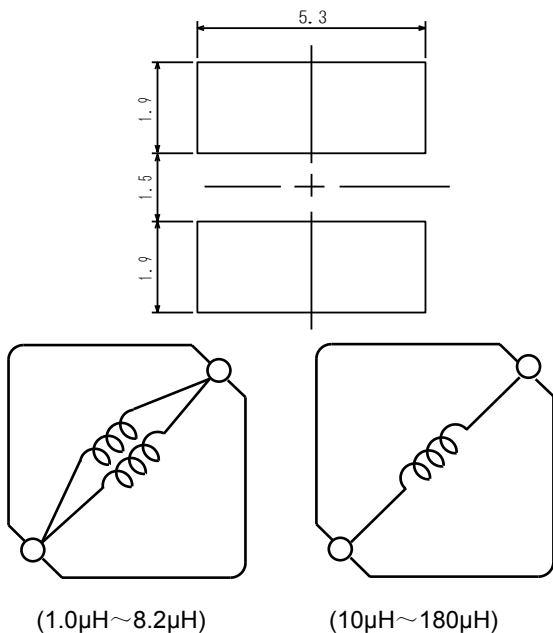
Applications

- Ideally used in Mobile phone, PDA, MP3, HDD, DSC/DVC, Note book PC, etc as DC-DC converter inductors.

Dimension - [mm]



Land pattern and Schematics - [mm]



SMD Power Inductor

CDRH4D18



Electrical Characteristics

| Part No. | Stamp | Inductance (μH) [within] ※1 | D.C.R.(Ω) Max. (Typ.) (at 20°C) | Rated Current (A) ※2 |
|------------------|-------|--|--|-------------------------|
| CDRH4D18NP-1R0NC | 1R0 | 1.0 \pm 30% | 45m(35m) | 1.72 |
| CDRH4D18NP-2R2NC | 2R2 | 2.2 \pm 30% | 75m(58m) | 1.32 |
| CDRH4D18NP-2R7NC | 2R7 | 2.7 \pm 30% | 105m(80m) | 1.28 |
| CDRH4D18NP-3R3NC | 3R3 | 3.3 \pm 30% | 110m(85m) | 1.04 |
| CDRH4D18NP-3R9NC | 3R9 | 3.9 \pm 30% | 155m(120m) | 0.88 |
| CDRH4D18NP-4R7NC | 4R7 | 4.7 \pm 30% | 162m(125m) | 0.84 |
| CDRH4D18NP-5R6NC | 5R6 | 5.6 \pm 30% | 170m(130m) | 0.80 |
| CDRH4D18NP-6R8NC | 6R8 | 6.8 \pm 30% | 200m(155m) | 0.76 |
| CDRH4D18NP-8R2NC | 8R2 | 8.2 \pm 30% | 245m(190m) | 0.68 |
| CDRH4D18NP-100NC | 100 | 10 \pm 30% | 200m(148m) | 0.61 |
| CDRH4D18NP-120NC | 120 | 12 \pm 30% | 210m(156m) | 0.56 |
| CDRH4D18NP-150NC | 150 | 15 \pm 30% | 240m(178m) | 0.50 |
| CDRH4D18NP-180NC | 180 | 18 \pm 30% | 338m(250m) | 0.48 |
| CDRH4D18NP-220NC | 220 | 22 \pm 30% | 397m(294m) | 0.41 |
| CDRH4D18NP-270NC | 270 | 27 \pm 30% | 441m(327m) | 0.35 |
| CDRH4D18NP-330NC | 330 | 33 \pm 30% | 694m(514m) | 0.32 |
| CDRH4D18NP-390NC | 390 | 39 \pm 30% | 709m(525m) | 0.30 |
| CDRH4D18NP-470NC | 470 | 47 \pm 30% | 922m(683m) | 0.28 |
| CDRH4D18NP-560NC | 560 | 56 \pm 30% | 1.08(800m) | 0.26 |
| CDRH4D18NP-680NC | 680 | 68 \pm 30% | 1.30(1.00) | 0.24 |
| CDRH4D18NP-820NC | 820 | 82 \pm 30% | 1.56(1.20) | 0.22 |
| CDRH4D18NP-101NC | 101 | 100 \pm 30% | 1.73(1.33) | 0.20 |
| CDRH4D18NP-121NC | 121 | 120 \pm 30% | 2.39(1.84) | 0.18 |
| CDRH4D18NP-151NC | 151 | 150 \pm 30% | 2.67(2.05) | 0.15 |
| CDRH4D18NP-181NC | 181 | 180 \pm 30% | 4.00(3.05) | 0.14 |

※1. Inductance measuring condition: 1.0 μH ~ 8.2 μH at 7.96 MHz
10 μH ~ 180 μH at 100 kHz

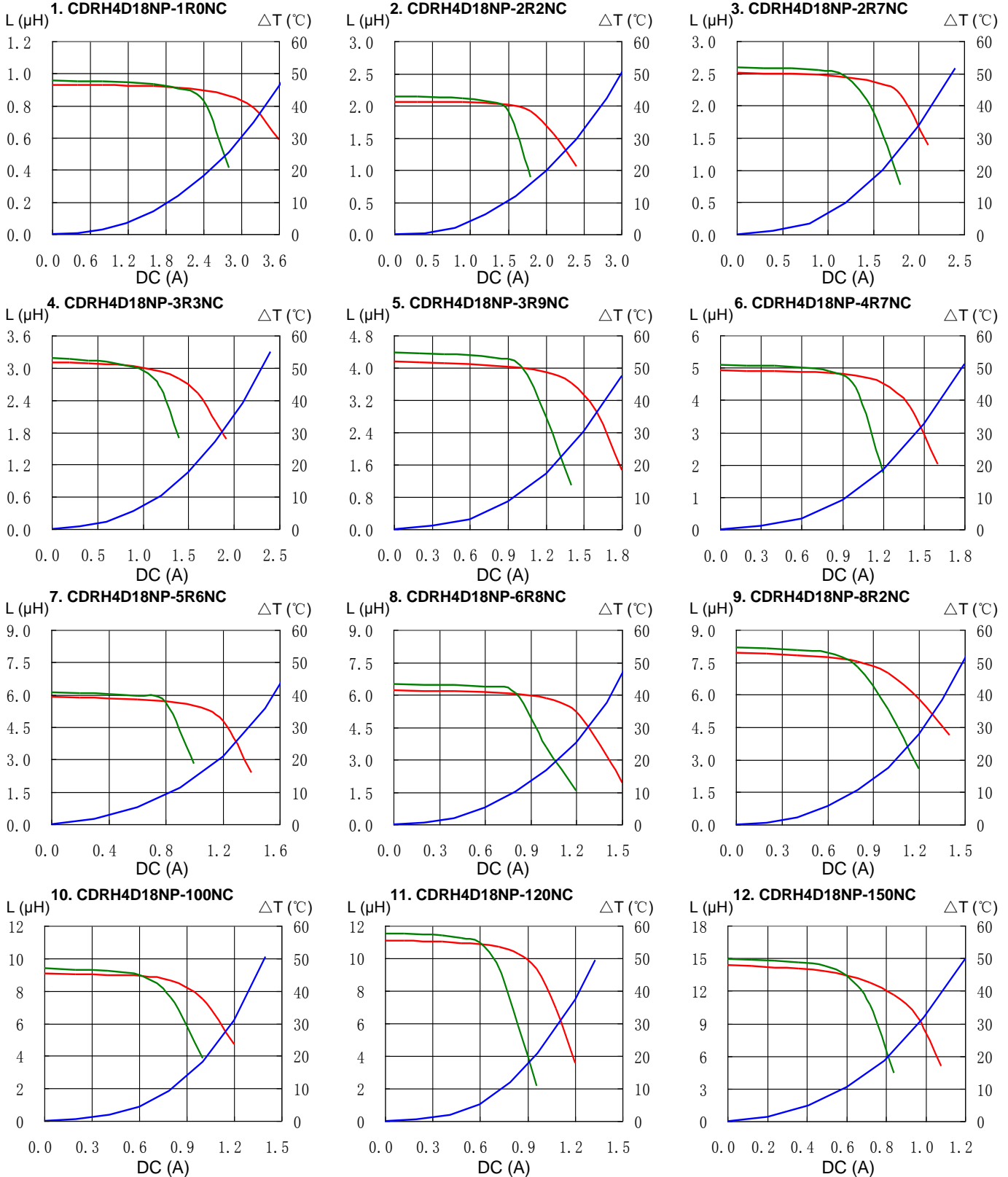
※2. Rated current: The DC current at which the inductance decreases to 65% of its nominal value or when $\Delta t=40^\circ\text{C}$, whichever is lower ($T_a=20^\circ\text{C}$).

SMD Power Inductor CDRH4D18



Saturation Current & Temperature Rise Graph

— L (20°C) — L (100°C) — ΔT

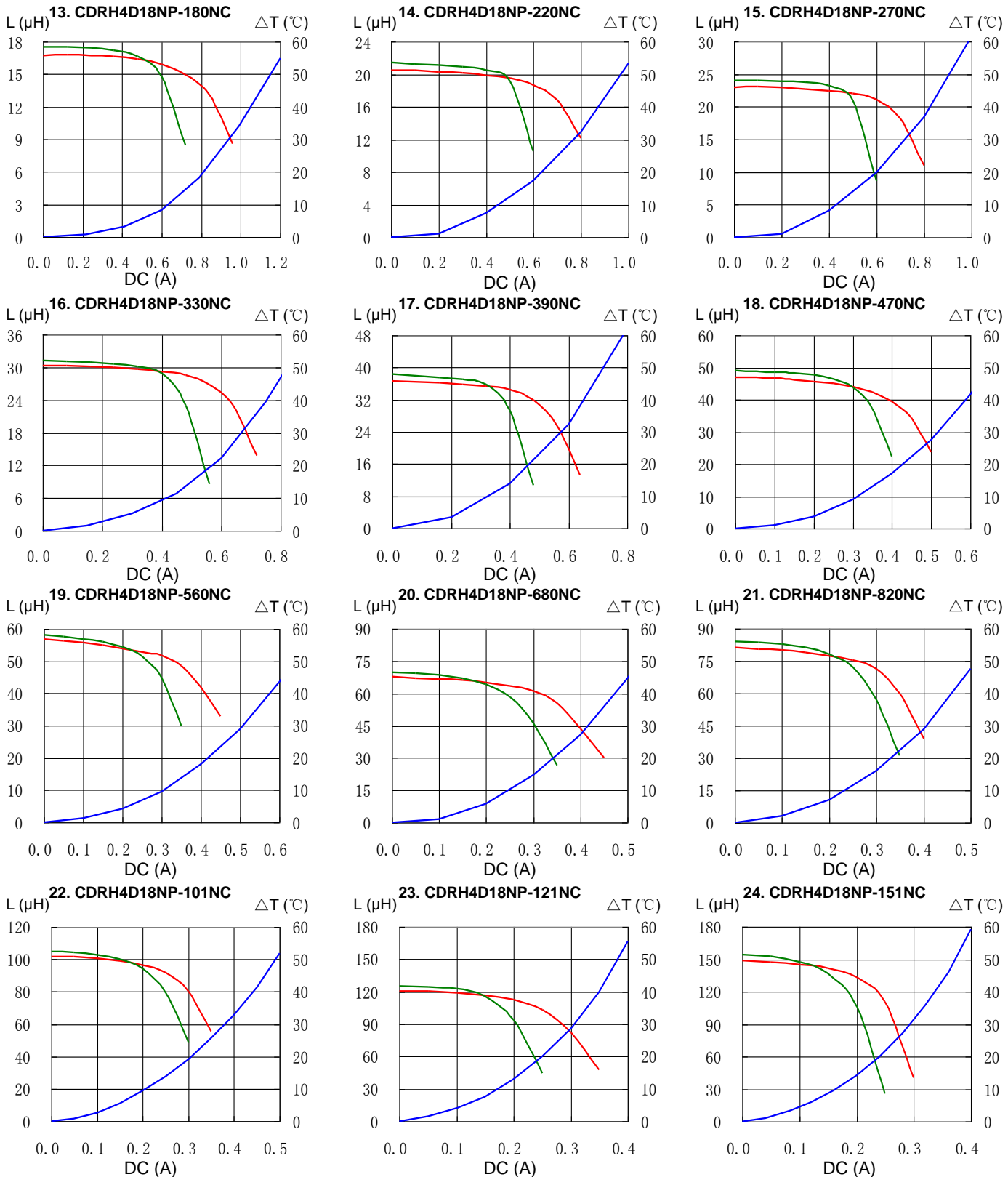


SMD Power Inductor CDRH4D18



Saturation Current & Temperature Rise Graph

— L (20°C) — L (100°C) — ΔT

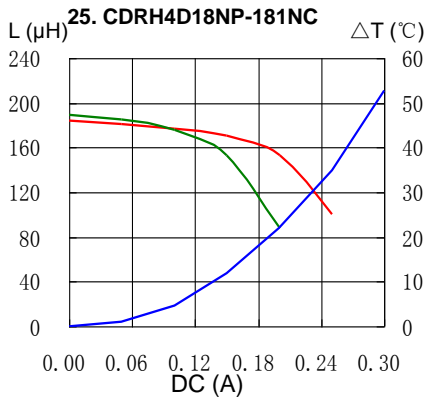


SMD Power Inductor CDRH4D18



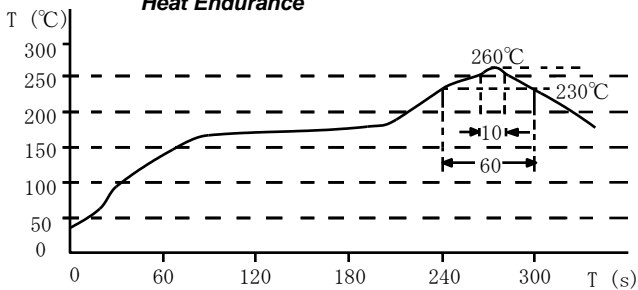
Saturation Current & Temperature Rise Graph

— L (20°C) — L (100°C) — ΔT

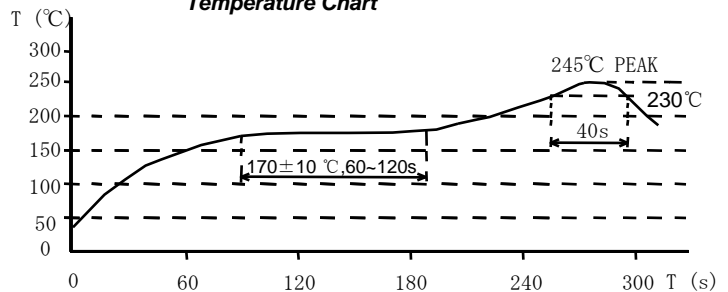


Solder Reflow Condition

Heat Endurance



Temperature Chart



Please refer to the sales offices on our website - <http://www.sumida.com>

Hong Kong

Tel.+852-2880-6781
FAX.+852-2565-9600
sales@hk.sumida.com

Saitama(Japan)

Tel.+81-48-691-7300
FAX.+81-48-691-7340
sales@jp.sumida.com

Chicago

Tel.+1-847-545-6700
FAX. +1-847-545-6720
sales@us.sumida.com

Shanghai

Tel.+86-21-5836-3299
FAX.+86-21-5836-3266
shanghai.sales@cn.sumida.com

Seoul

Tel.+82-2-6237-0777
FAX.+82-2-6237-0778
sales@kr.sumida.com

Obernzell

Tel.+49-8591-937-0
FAX. +49-8591-937-103
contact@eu.sumida.com

Shenzhen

Tel.+86-755-8291-0228
FAX.+86-755-8291-0338
shenzhen.sales@cn.sumida.com

Singapore

Tel.+65-6296-3388
FAX.+65-6841-4426
sales@sg.sumida.com

Neumarkt

Tel.+49-9181-4509-110
FAX. +49-9181-4509-310
infocomp@eu.sumida.com

Taipei

Tel.+886-2-8751-2737
FAX.+886-2-8751-2738
sales@tw.sumida.com

San Jose

Tel.+1-408-321-9660
FAX.+1-408-321-9308
sales@us.sumida.com

Looking for pricing, stock, or lifecycle information?

Click below to explore more details on WIN SOURCE:

- ⊖ [View CDRH4D18NP-150NC on WIN SOURCE](#)
- ⊖ [Sumida America Components Inc. Information](#)

Optimize Your Supply Chain with WIN SOURCE Solutions

- ✓ Global Sourcing Solution
- ✓ Obsolete Management
- ✓ Cost Control Management
- ✓ Shortage Management
- ✓ Alternative Solution
- ✓ Excess Inventory Management