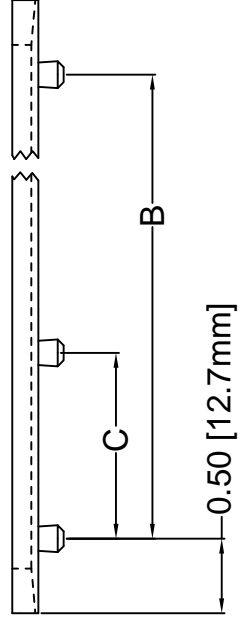
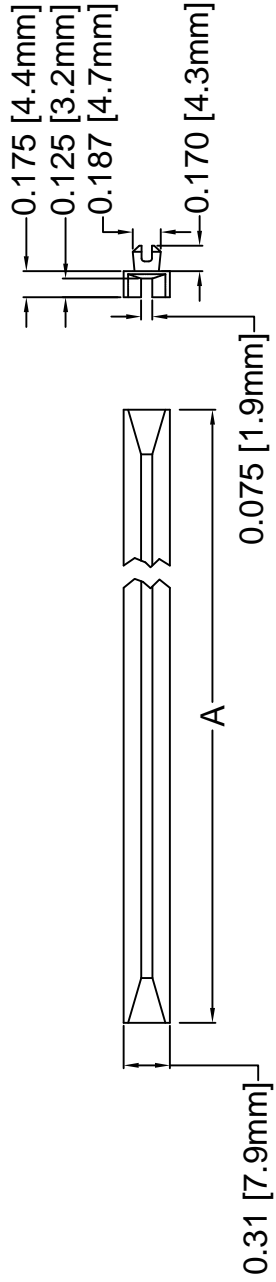




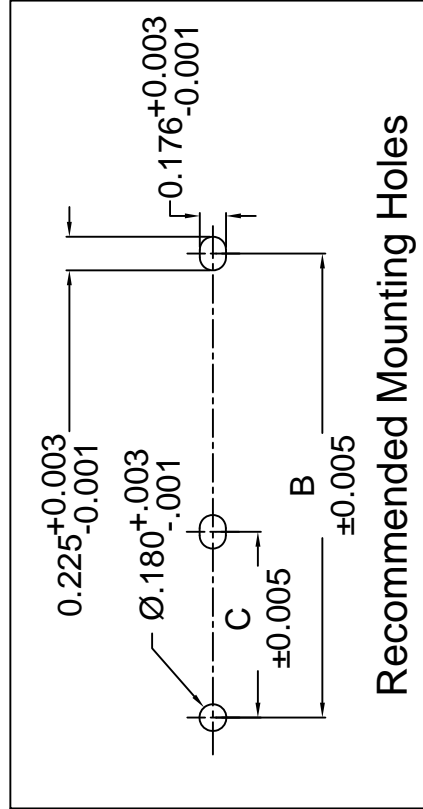
# THE DATASHEET OF SDC-500



|      |                     |
|------|---------------------|
| REV. |                     |
| J    | Engineering Release |
| K    | Removed Material C  |
|      |                     |
|      |                     |



| PART NO. | A            |
|----------|--------------|
| SDC-200  | ±.032 (.8)   |
| SDC-250  | 2.0 (50.8)   |
| SDC-300  | 2.5 (63.5)   |
| SDC-350  | 3.0 (76.2)   |
| SDC-400  | 3.5 (88.9)   |
| SDC-450  | 4.0 (101.6)  |
| SDC-500  | 4.5 (114.3)  |
| SDC-550  | 5.0 (127.0)  |
| SDC-600  | 5.5 (139.7)  |
| SDC-650  | 6.0 (152.4)  |
| SDC-700  | 6.5 (165.1)  |
| SDC-750  | 7.0 (177.8)  |
| SDC-800  | 7.5 (190.5)  |
| SDC-850  | 8.0 (203.2)  |
| SDC-900  | 8.5 (215.9)  |
| SDC-950  | 9.0 (228.6)  |
| SDC-1000 | 9.5 (241.3)  |
| SDC-1050 | 10.0 (254.0) |
| SDC-1100 | 10.5 (266.7) |
|          | 11.0 (279.4) |




**Recommended Mounting Holes**

|   |            |
|---|------------|
| STANDARD TOLERANCES<br>(UNLESS OTHERWISE SPECIFIED) |            |
| DECIMALS  | ANGLES     |
| .X ±.1  | X°         |
| .XX ±.01  |            |
| .XXX ±.005  |            |
| DESIGNED:   | DATE: 11/2 |
| <b>D. Green</b>                                     | DATE: 11/2 |
| CHECKED:  |            |
| <b>M. Chen</b>                                      |            |

3. ALL DIMENSIONS IN INCHES, UNLESS OTHERWISE SPECIFIED.
2. MATERIAL: NYLON 66, 94V-2, NATURAL.
1. GENERAL SPECIFICATIONS: BIVAR MOLDED COMPONENT SPECIFICATION BV00-E101.

## Looking for pricing, stock, or lifecycle information?

Click below to explore more details on WIN SOURCE:

 [View SDC-500 on WIN SOURCE](#)

 [Bivar Inc. Information](#)

## Optimize Your Supply Chain with WIN SOURCE Solutions

-  Global Sourcing Solution
-  Obsolete Management
-  Cost Control Management
-  Shortage Management
-  Alternative Solution
-  Excess Inventory Management