

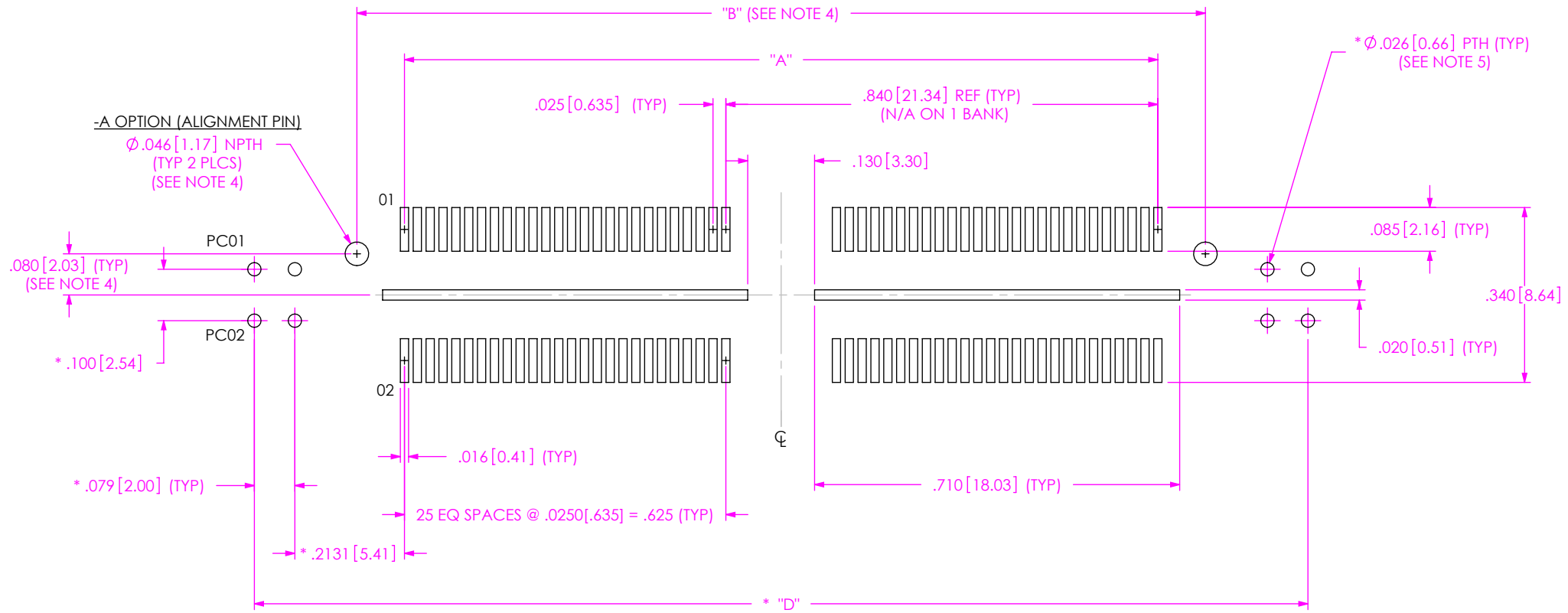


**THE DATASHEET OF
QFSS-052-04.25-L-D-A**



QFSS-052-04.25-X-D-A-PC4 DESIGN SHOWN

-PXX: POWER COMBO OPTION
(SEE NOTE 2)



* = REQUIRED ON -PXX OPTIONS ONLY

No OF PAIRS PER ROW	No OF POS PER ROW	-PXX	"A"	"B"	No OF BANKS	* "D"
-016	-026	-PX4	.625[15.88] REF	.810[20.57]	1	1.209[30.71]
		-PX8				1.524[38.71]
-032	-052	-PX4	1.465[37.21]	1.650[41.91]	2	2.049[52.04]
		-PX8				2.364[60.05]
-048	-078	-PX4	2.305[58.55]	2.490[63.25]	3	2.889[73.38]
		-PX8				3.204[81.38]
-054	-104	☒ -PX4	3.145[79.88]	3.330[84.58]	4	3.729[94.72]
		☒ -PX8				4.044[102.72]
☒ -060	-130	-PX4	3.985[101.22]	4.170[105.92]	5	4.569[116.05]
		-PX8				4.884[124.05]

☒ = NOT TOOLED
☒ ☒ = NOT RELEASED FOR PRODUCTION

NOTES:

1. ALL DIMENSIONS ARE SYMMETRIC ABOUT THE CENTERLINE.
2. -PXX & -RFX OPTION AVAILABLE ON POSITIONS -026, -052 & -078 ONLY.
3. DESIGNED IN ENGLISH.
4. ALIGNMENT PINS ARE NOT AVAILABLE WITH -PXX OR -RFX OPTIONS.
5. TO BE SOLDERED USING PASTE-IN-HOLE TECHNOLOGY.

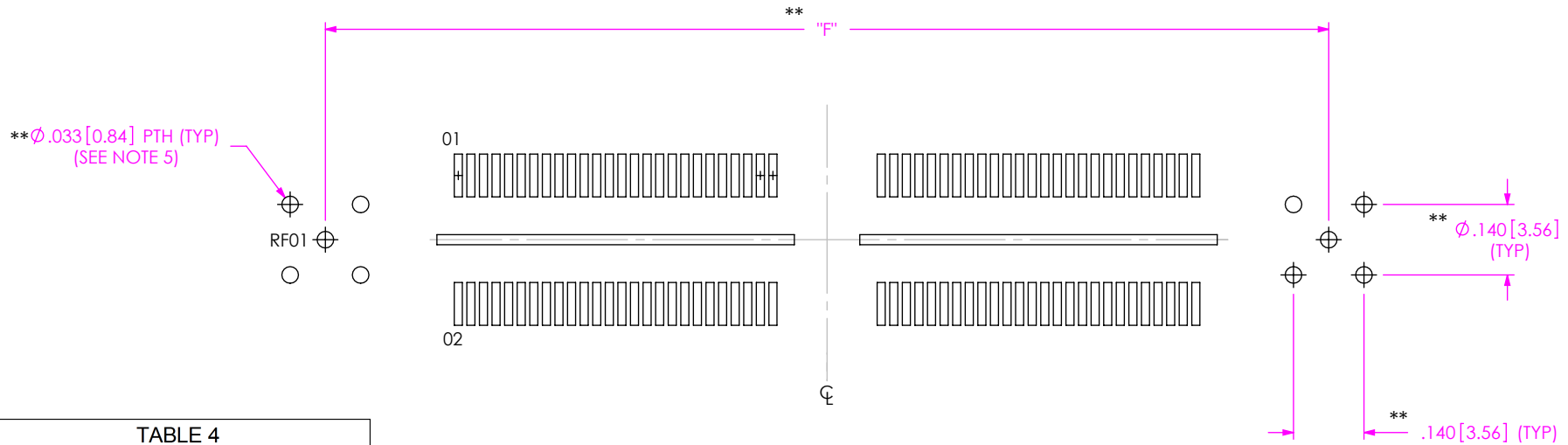
PROPRIETARY NOTE
THIS DOCUMENT CONTAINS CONFIDENTIAL AND PROPRIETARY INFORMATION AND ALL DESIGN, MANUFACTURING, REPRODUCTION, USE, PATENT RIGHTS AND SALES RIGHTS ARE EXPRESSLY RESERVED BY SAMTEC, INC. THIS DOCUMENT SHALL NOT BE DISCLOSED, IN WHOLE OR IN PART, TO ANY UNAUTHORIZED PERSON OR ENTITY NOR REPRODUCED, TRANSFERRED OR INCORPORATED IN ANY OTHER PROJECT IN ANY MANNER WITHOUT THE EXPRESS WRITTEN CONSENT OF SAMTEC, INC.



520 PARK EAST BLVD., NEW ALBANY, IN 47150
PHONE: 812-944-6733 FAX: 812-948-5047
e-Mail info@SAMTEC.com code 55322

QFS-052-04.25-X-D-RF1 DESIGN SHOWN

[DIFFERENT AS SHOWN, OTHERWISE SAME AS QFSS-052-04.25-X-D-A-PC4 DESIGN]

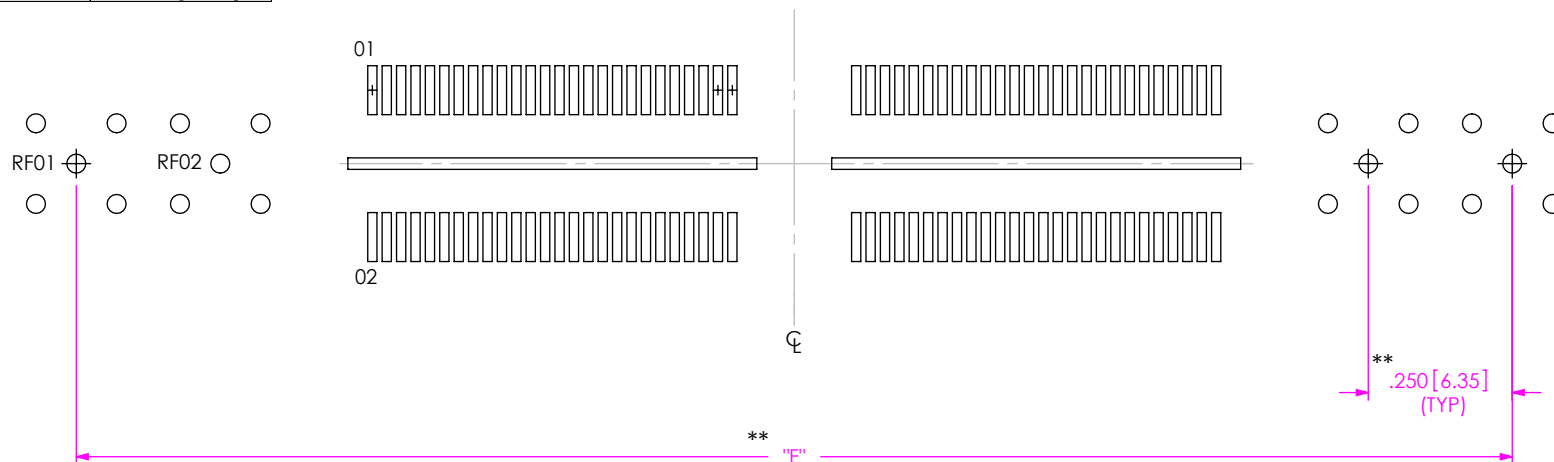


** REQUIRED ON THE -RFX OPTIONS ONLY.

ASSEMBLY	"F"
QFXX-026-XX.XX-X-D-RF1	1.153 [29.29]
QFXX-026-XX.XX-X-D-RT1	1.153 [29.29]
QFXX-026-XX.XX-X-D-RF2	1.653 [41.99]
QFXX-052-XX.XX-X-D-RF1	1.993 [50.62]
QFXX-052-XX.XX-X-D-RT1	1.993 [50.62]
QFXX-052-XX.XX-X-D-RF2	2.493 [63.32]
QFXX-078-XX.XX-X-D-RF1	2.833 [71.96]
QFXX-078-XX.XX-X-D-RF2	3.333 [84.66]

QFS-052-04.25-X-D-RF2 DESIGN SHOWN

[DIFFERENT AS SHOWN, OTHERWISE SAME AS QFS-052-04.25-X-D-RF1 DESIGN]

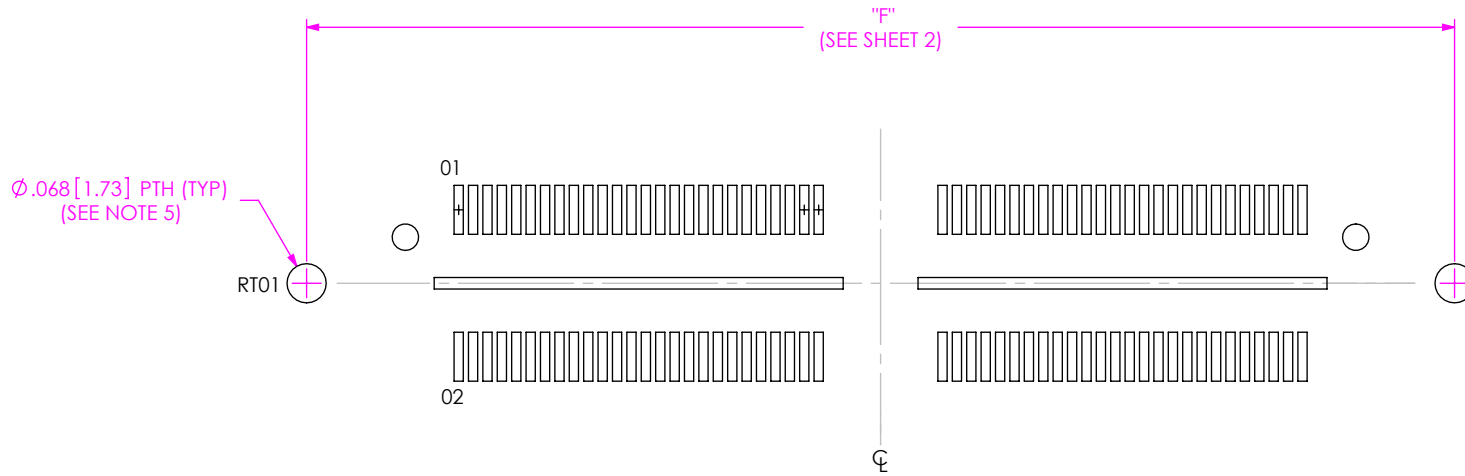


PROPRIETARY NOTE
 * THIS DOCUMENT CONTAINS CONFIDENTIAL AND PROPRIETARY INFORMATION AND ALL DESIGN, MANUFACTURING, REPRODUCTION, USE, PATENT RIGHTS AND SALES RIGHTS ARE EXPRESSLY RESERVED BY SAMTEC, INC. THIS DOCUMENT SHALL NOT BE DISCLOSED, IN WHOLE OR PART, TO ANY UNAUTHORIZED PERSON OR ENTITY NOR REPRODUCED, TRANSFERRED OR INCORPORATED IN ANY OTHER PROJECT IN ANY MANNER WITHOUT THE EXPRESS WRITTEN CONSENT OF SAMTEC, INC.



520 PARK EAST BLVD, NEW ALBANY, IN 47150
 PHONE: 812-944-6733 FAX: 812-948-5047
 e-Mail info@SAMTEC.com code 55322

QFS-052-04.25-X-D-RT1 DESIGN SHOWN
 [DIFFERENT AS SHOWN, OTHERWISE SAME AS QFSS-052-04.25-X-D-A-PC4 DESIGN]



• PROPRIETARY NOTE •
 THIS DOCUMENT CONTAINS CONFIDENTIAL AND PROPRIETARY INFORMATION AND ALL DESIGN, MANUFACTURING, REPRODUCTION, USE, PATENT RIGHTS AND SALES RIGHTS ARE EXPRESSLY RESERVED BY SAMTEC, INC. THIS DOCUMENT SHALL NOT BE DISCLOSED, IN WHOLE OR PART, TO ANY UNAUTHORIZED PERSON OR ENTITY NOR REPRODUCED, TRANSFERRED OR INCORPORATED IN ANY OTHER PROJECT IN ANY MANNER WITHOUT THE EXPRESS WRITTEN CONSENT OF SAMTEC, INC.

samtec
 520 PARK EAST BLVD, NEW ALBANY, IN 47150
 PHONE: 812-944-6733 FAX: 812-948-5047
 e-Mail info@SAMTEC.com code 55322

TABLE 5	
END OPTION	"G"
-PCX	.063 [1.60]
-PTX	.075 [1.91]

QFSS-052-04.25-X-D-A-PC4 STENCIL SHOWN

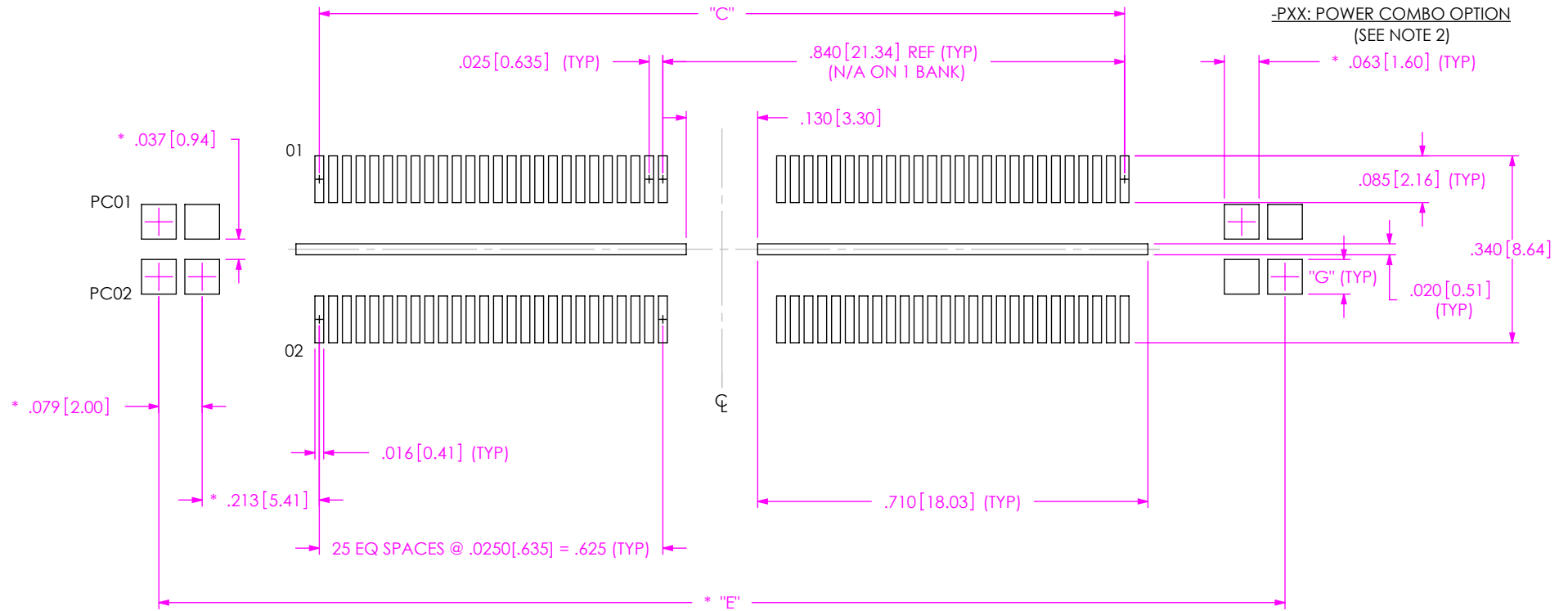


TABLE 3					
No OF PAIRS PER ROW	No OF POS PER ROW	-PXX	"C"	No OF BANKS	* "E"
-16	-026	-PX4	.625[15.88] REF	1	1.209[30.71]
		-PX8			1.524[38.71]
-32	-052	-PX4	1.465[37.21]	2	2.049[52.04]
		-PX8			2.364[60.05]
-48	-078	-PX4	2.305[58.55]	3	2.889[73.38]
		-PX8			3.204[81.38]
-54	-104	☒ ☒ -PX4	3.145[79.88]	4	3.729[94.72]
		☒ ☒ -PX8			4.044[102.72]
☒ -60	-130	-PX4	3.985[101.22]	5	4.569[116.05]
		-PX8			4.884[124.05]

☒ = NOT TOOLED
 ☒ ☒ = NOT RELEASED FOR PRODUCTION

* = REQUIRED ON -PXX OPTIONS ONLY

NOTES:

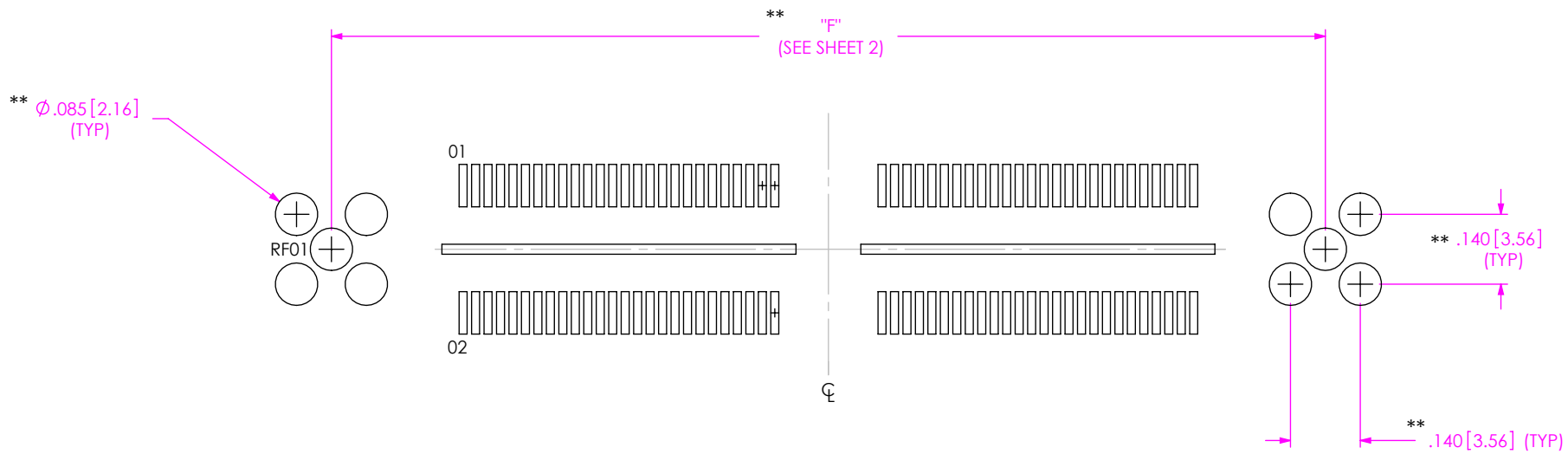
1. ALL DIMENSIONS ARE SYMMETRIC ABOUT THE CENTERLINE.
2. -PXX & -RFX OPTION AVAILABLE ON POSITIONS -026, -052 & -078 ONLY.
3. DESIGNED IN ENGLISH.
4. STENCIL TO BE .0060[.152] THICK.

PROPRIETARY NOTE
 THIS DOCUMENT CONTAINS CONFIDENTIAL AND PROPRIETARY INFORMATION AND ALL DESIGN, MANUFACTURING, REPRODUCTION, USE, PATENT RIGHTS AND SALES RIGHTS ARE EXPRESSLY RESERVED BY SAMTEC, INC. THIS DOCUMENT SHALL NOT BE DISCLOSED, IN WHOLE OR PART, TO ANY UNAUTHORIZED PERSON OR ENTITY NOR REPRODUCED, TRANSFERRED OR INCORPORATED IN ANY OTHER PROJECT IN ANY MANNER WITHOUT THE EXPRESS WRITTEN CONSENT OF SAMTEC, INC.



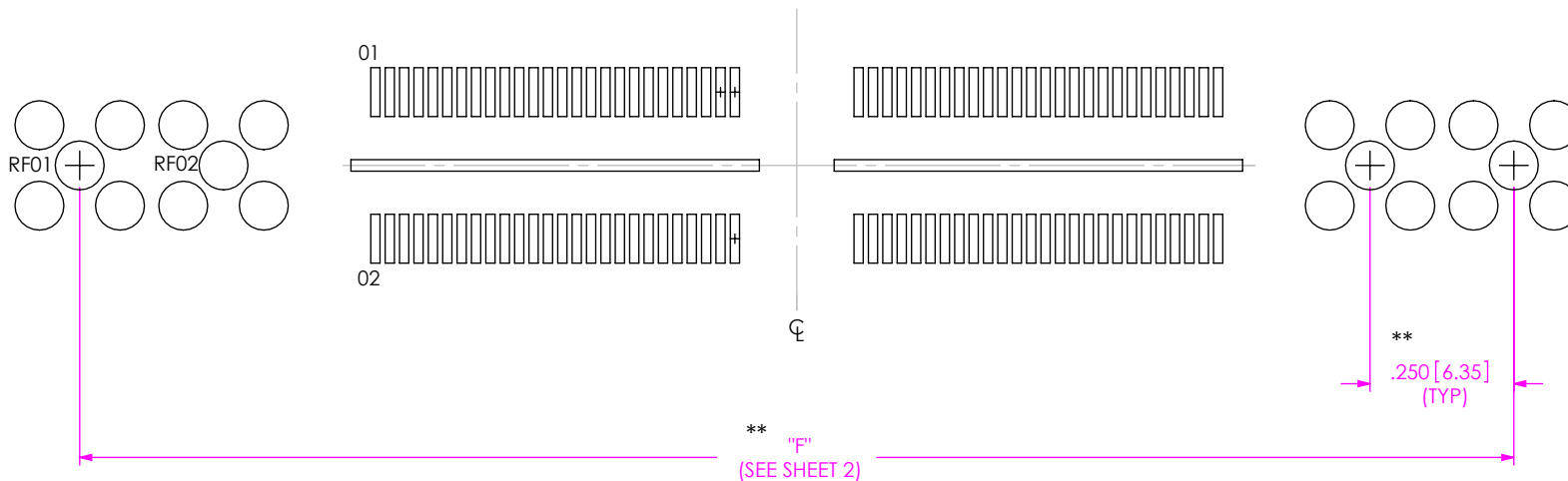
520 PARK EAST BLVD, NEW ALBANY, IN 47150
 PHONE: 812-944-6733 FAX: 812-948-5047
 e-Mail info@SAMTEC.com code 55322

QFS-052-04.25-X-D-RF1 STENCIL SHOWN
[DIFFERENT AS SHOWN, OTHERWISE SAME AS QFS-052-04.25-X-D-A-PC4 STENCIL]



QFS-052-04.25-X-D-RF2 STENCIL SHOWN
[DIFFERENT AS SHOWN, OTHERWISE SAME AS QFS-052-04.25-X-D-RF1 STENCIL]

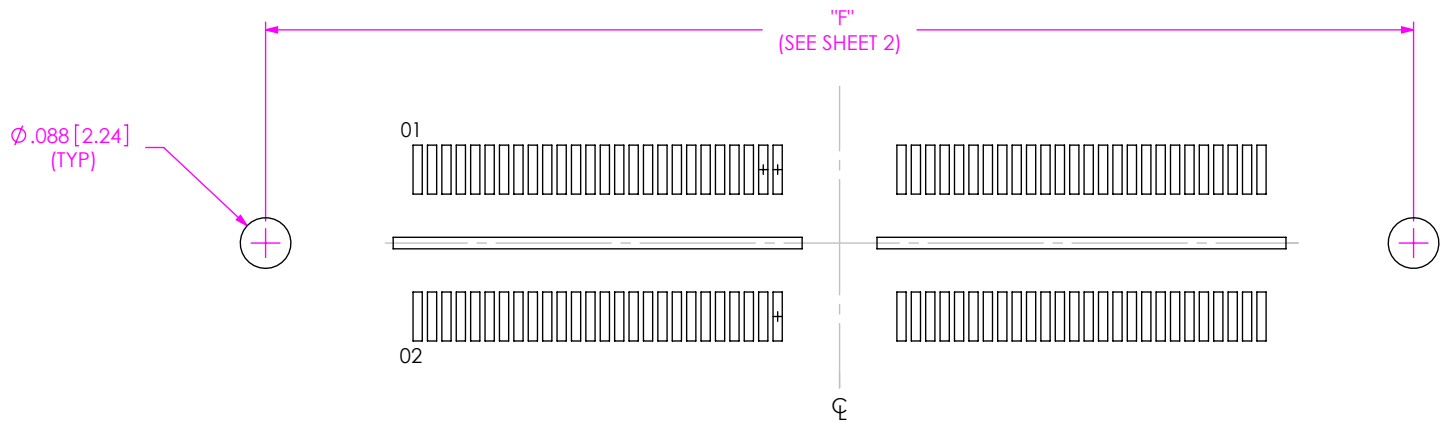
** REQUIRED ON THE -RFX OPTIONS ONLY



PROPRIETARY NOTE
 * THIS DOCUMENT CONTAINS CONFIDENTIAL AND PROPRIETARY INFORMATION AND ALL DESIGN, MANUFACTURING, REPRODUCTION, USE, PATENT RIGHTS AND SALES RIGHTS ARE EXPRESSLY RESERVED BY SAMTEC, INC. THIS DOCUMENT SHALL NOT BE DISCLOSED, IN WHOLE OR PART, TO ANY UNAUTHORIZED PERSON OR ENTITY NOR REPRODUCED, TRANSFERRED OR INCORPORATED IN ANY OTHER PROJECT IN ANY MANNER WITHOUT THE EXPRESS WRITTEN CONSENT OF SAMTEC, INC.

samtec
 520 PARK EAST BLVD, NEW ALBANY, IN 47150
 PHONE: 812-944-6733 FAX: 812-948-5047
 e-Mail info@SAMTEC.com code 55322

QFS-052-04.25-X-D-RT1 STENCIL SHOWN
[DIFFERENT AS SHOWN, OTHERWISE SAME AS QFS-052-04.25-X-D-A-PC4 STENCIL]



PROPRIETARY NOTE
 THIS DOCUMENT CONTAINS CONFIDENTIAL AND PROPRIETARY INFORMATION AND ALL DESIGN, MANUFACTURING, REPRODUCTION, USE, PATENT RIGHTS AND SALES RIGHTS ARE EXPRESSLY RESERVED BY SAMTEC, INC. THIS DOCUMENT SHALL NOT BE DISCLOSED, IN WHOLE OR PART, TO ANY UNAUTHORIZED PERSON OR ENTITY NOR REPRODUCED, TRANSFERRED OR INCORPORATED IN ANY OTHER PROJECT IN ANY MANNER WITHOUT THE EXPRESS WRITTEN CONSENT OF SAMTEC, INC.

samtec
 520 PARK EAST BLVD, NEW ALBANY, IN 47150
 PHONE: 812-944-6733 FAX: 812-948-5047
 e-Mail info@SAMTEC.com code 55322

QFS-052-04.25-X-D-A-GP DESIGN SHOWN
 [DIFFERENT AS SHOWN, OTHERWISE SAME AS QFSS-052-04.25-X-D-A-PC4 DESIGN]

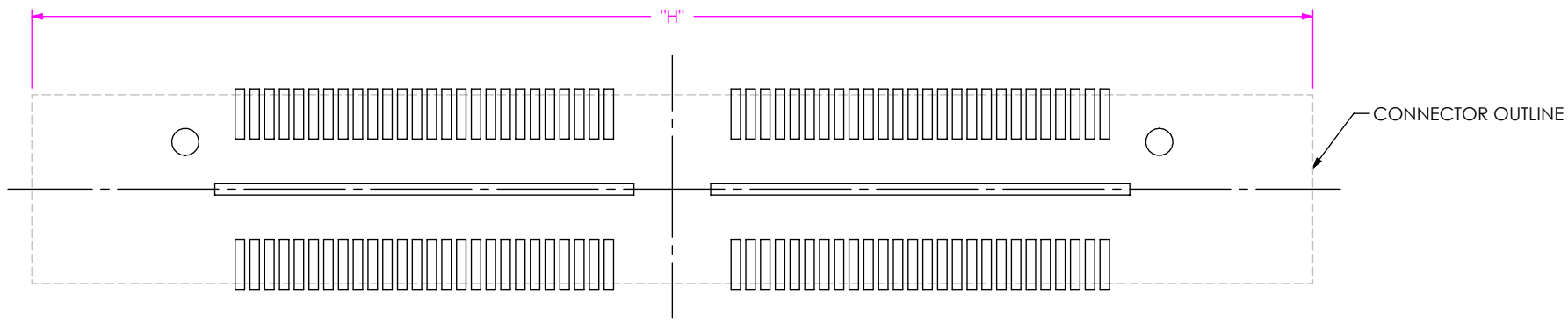
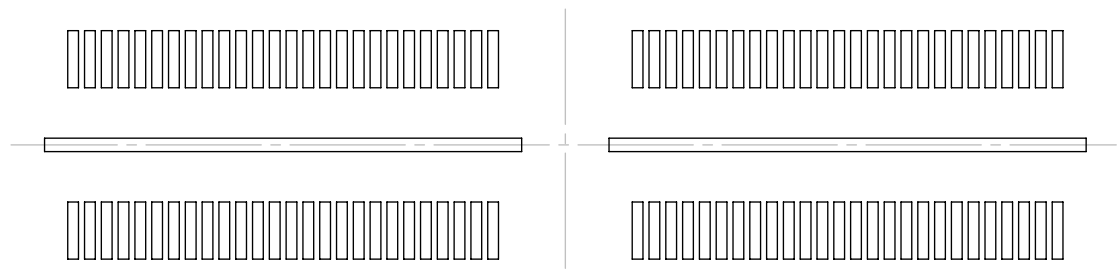


TABLE 6

NO OF POS	"H"
-026	1.330 [33.78]
-052	2.170 [55.12]
-78	3.010 [76.45]
-104	3.850 [97.79]
☒ -130	4.690 [119.13]

☒ = NOT TOOLED

QFS-052-04.25-X-D-A-GP STENCIL SHOWN
 [DIFFERENT AS SHOWN, OTHERWISE SAME AS QFSS-052-04.25-X-D-A-PC4 DESIGN]



PROPRIETARY NOTE
 THIS DOCUMENT CONTAINS CONFIDENTIAL AND PROPRIETARY INFORMATION AND ALL DESIGN, MANUFACTURING, REPRODUCTION, USE, PATENT RIGHTS AND SALES RIGHTS ARE EXPRESSLY RESERVED BY SAMTEC, INC. THIS DOCUMENT SHALL NOT BE DISCLOSED, IN WHOLE OR PART, TO ANY UNAUTHORIZED PERSON OR ENTITY NOR REPRODUCED, TRANSFERRED OR INCORPORATED IN ANY OTHER PROJECT IN ANY MANNER WITHOUT THE EXPRESS WRITTEN CONSENT OF SAMTEC, INC.



520 PARK EAST BLVD, NEW ALBANY, IN 47150
 PHONE: 812-944-6733 FAX: 812-948-5047
 e-Mail info@SAMTEC.com code 55322

Looking for pricing, stock, or lifecycle information?

Click below to explore more details on WIN SOURCE:

 [View QFSS-052-04.25-L-D-A on WIN SOURCE](#)

 [Samtec Inc. Information](#)

Optimize Your Supply Chain with WIN SOURCE Solutions

-  Global Sourcing Solution
-  Obsolete Management
-  Cost Control Management
-  Shortage Management
-  Alternative Solution
-  Excess Inventory Management