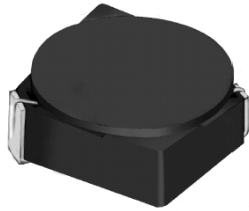




**THE DATASHEET OF
CDRH3D16/HPNP-220MC**



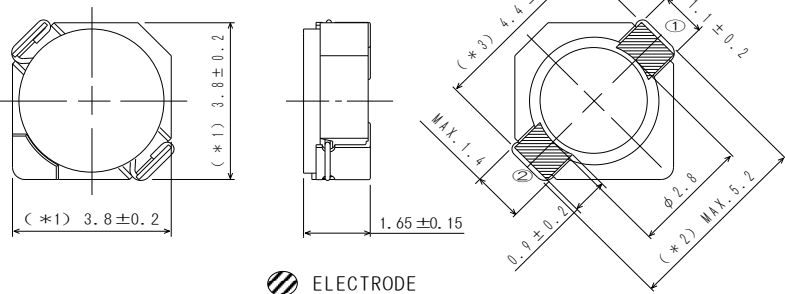
SMD Power Inductor CDRH3D16/HP



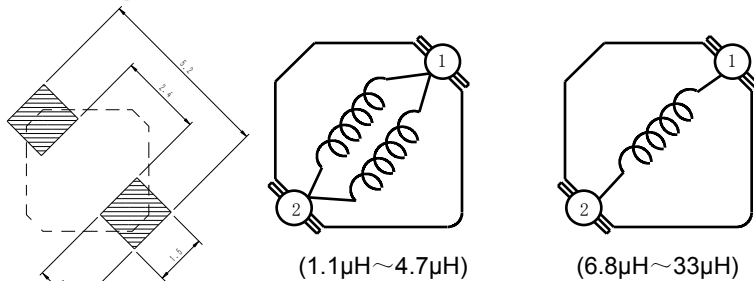
Description

- Ferrite drum core construction.
- Magnetically shielded.
- L × W × H: 4.0 × 4.0 × 1.8 mm Max.
- Product weight: 80mg (Ref.)
- Moisture Sensitivity Level: 1
- RoHS compliance.

Dimension - [mm]



Land pattern and Schematics - [mm]



Electrical Characteristics

Part Name	Stamp	Inductance (μH) [within] ※1	D.C.R. (mΩ) Max. (Typ.) (at 20°C)	Saturation Current (A) ※2		Temperature Rise Current (A) ※3
				at 20°C	at 105°C	
CDRH3D16/HPNP-1R7NC	A	1.7 ± 30%	51(41)	2.00	1.50	2.40
CDRH3D16/HPNP-2R2NC	C	2.2 ± 30%	59(47)	1.75	1.30	2.30
CDRH3D16/HPNP-3R3NC	E	3.3 ± 30%	85(68)	1.40	1.10	1.80
CDRH3D16/HPNP-4R7NC	G	4.7 ± 30%	116(93)	1.20	0.90	1.50
CDRH3D16/HPNP-6R8NC	J	6.8 ± 30%	180(145)	1.00	0.72	1.10
CDRH3D16/HPNP-100MC	L	10 ± 20%	230(185)	0.84	0.62	1.00
CDRH3D16/HPNP-150MC	N	15 ± 20%	410(328)	0.65	0.52	0.75
CDRH3D16/HPNP-220MC	P	22 ± 20%	610(488)	0.55	0.43	0.52
CDRH3D16/HPNP-330MC	Q	33 ± 20%	870(695)	0.46	0.35	0.41

※1. Inductance measuring condition: at 100kHz.

※2. Saturation current: The DC current at which the inductance decreases to 65% of its nominal value.

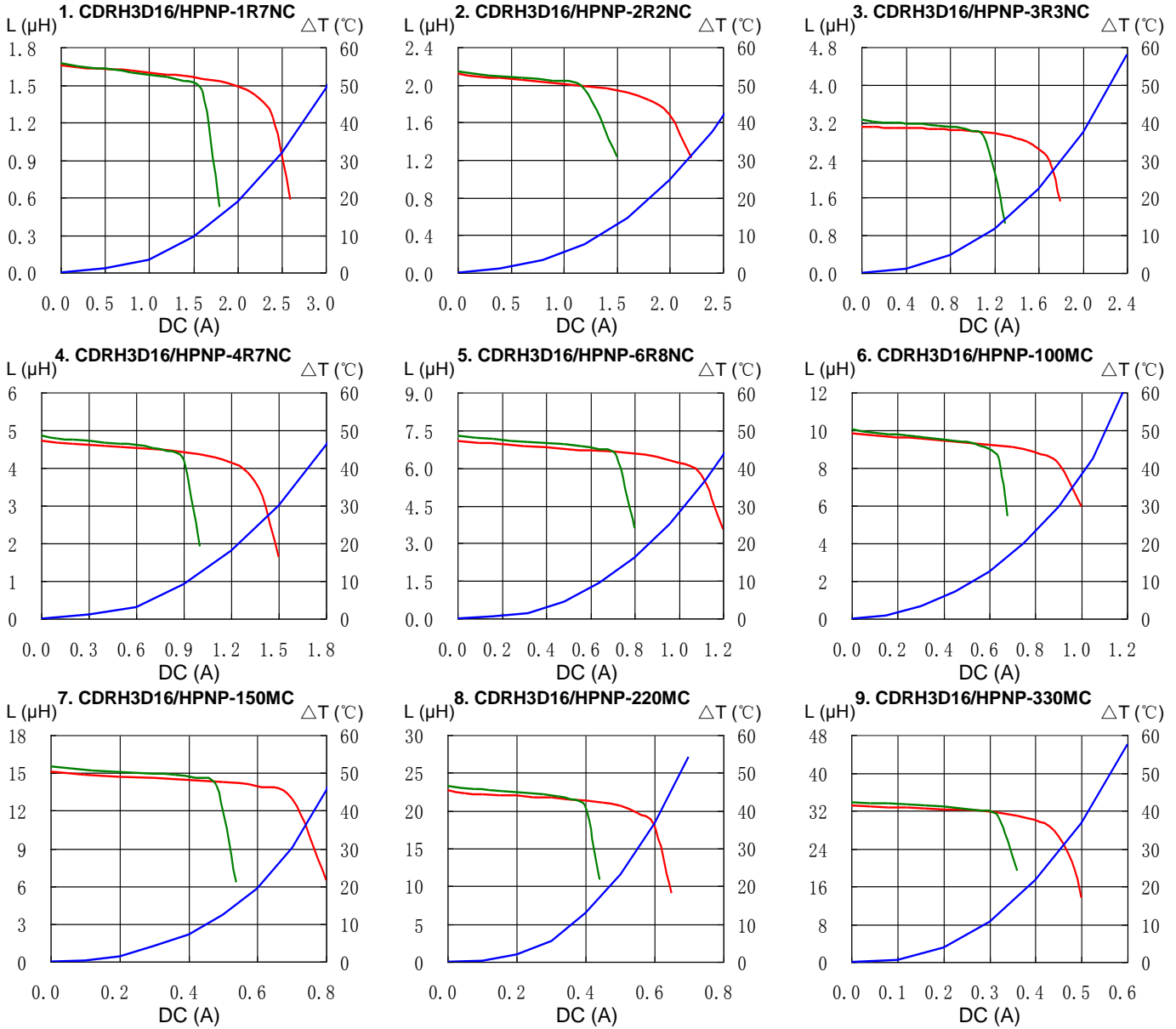
※3. Temperature rise current: The DC current at which the temperature rise is Δt=40°C. (Ta=20°C)

SMD Power Inductor CDRH3D16/HP



Saturation Current & Temperature Rise Graph

— L (20°C) — L (105°C) — ΔT

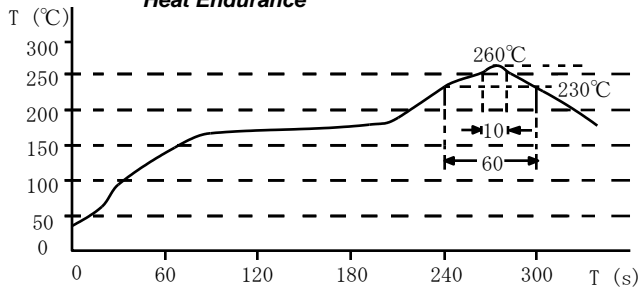


SMD Power Inductor CDRH3D16/HP

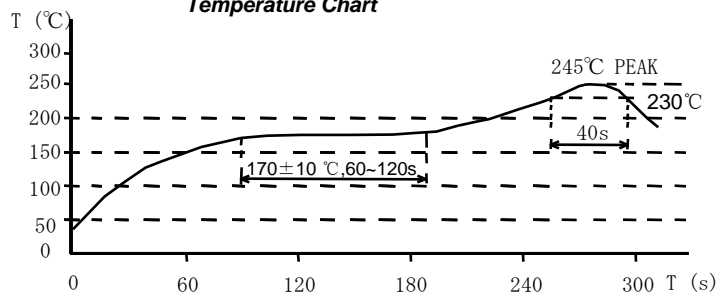


Solder Reflow Condition

Heat Endurance



Temperature Chart



Please refer to the sales offices on our website - <http://www.sumida.com>

Hong Kong

Tel.+852-2880-6781
FAX.+852-2565-9600
sales@hk.sumida.com

Saitama(Japan)

Tel.+81-48-691-7300
FAX.+81-48-691-7340
sales@jp.sumida.com

Chicago

Tel.+1-847-545-6700
FAX. +1-847-545-6720
sales@us.sumida.com

Shanghai

Tel.+86-21-5836-3299
FAX.+86-21-5836-3266
shanghai.sales@cn.sumida.com

Seoul

Tel.+82-2-6237-0777
FAX.+82-2-6237-0778
sales@kr.sumida.com

Obernzell

Tel.+49-8591-937-0
FAX. +49-8591-937-103
contact@eu.sumida.com

Shenzhen

Tel.+86-755-8291-0228
FAX.+86-755-8291-0338
shenzhen.sales@cn.sumida.com

Singapore

Tel.+65-6296-3388
FAX.+65-6841-4426
sales@sg.sumida.com

Neumarkt

Tel.+49-9181-4509-110
FAX. +49-9181-4509-310
infocomp@eu.sumida.com

Taipei

Tel.+886-2-8751-2737
FAX.+886-2-8751-2738
sales@tw.sumida.com

San Jose

Tel.+1-408-321-9660
FAX.+1-408-321-9308
sales@us.sumida.com

Looking for pricing, stock, or lifecycle information?

Click below to explore more details on WIN SOURCE:

- ⊖ [View CDRH3D16/HPNP-220MC on WIN SOURCE](#)
- ⊖ [Sumida America Components Inc. Information](#)

Optimize Your Supply Chain with WIN SOURCE Solutions

- ✓ Global Sourcing Solution
- ✓ Obsolete Management
- ✓ Cost Control Management
- ✓ Shortage Management
- ✓ Alternative Solution
- ✓ Excess Inventory Management