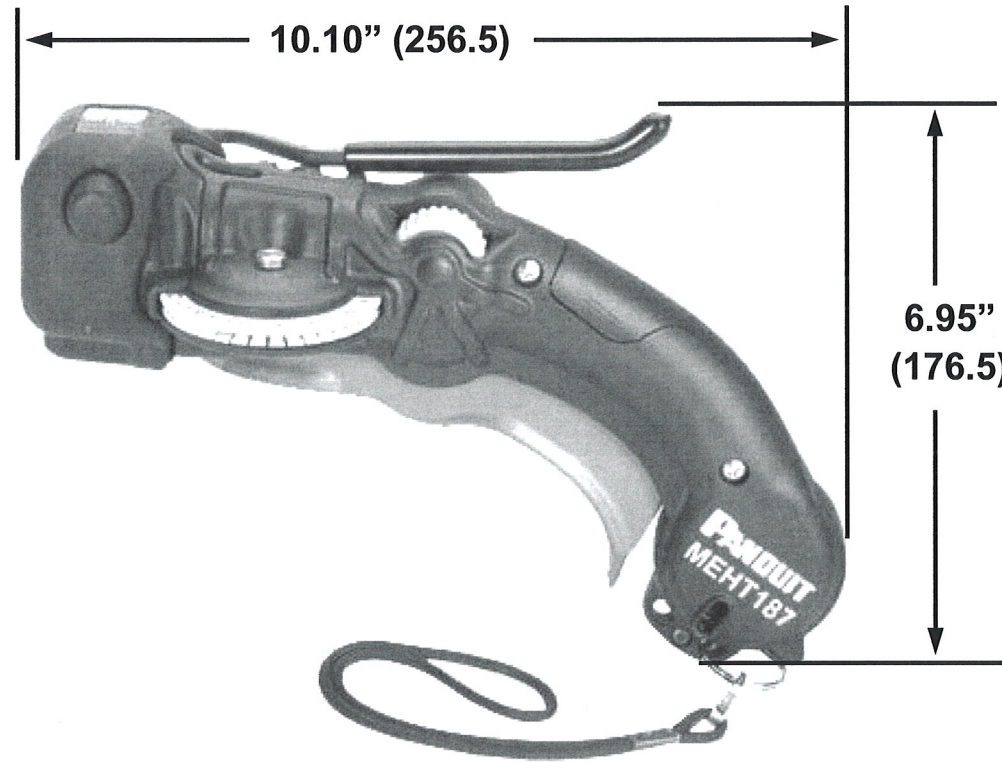
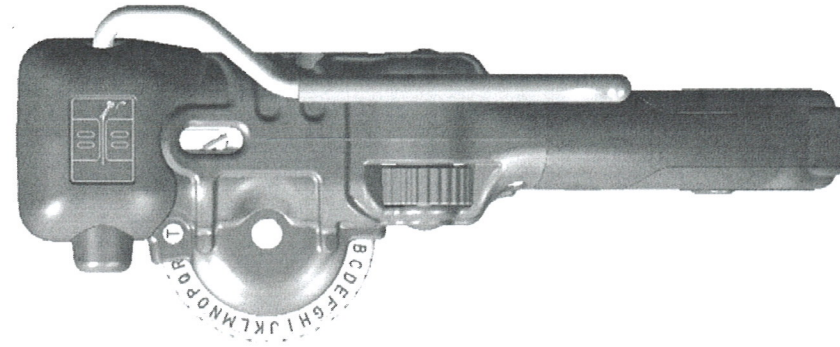




# THE DATASHEET OF MEHT187



THIS COPY IS PROVIDED ON A RESTRICTED BASIS AND IS NOT TO BE USED IN ANY WAY DETRIMENTAL TO THE INTERESTS OF PANDUIT CORP.



ACCESSORY TAPE PRODUCTS (SOLD SEPARATELY)	
PART NO.	DESCRIPTION
META-X	1/2 in. X 16 ft. (12.7mm X 4.88m) aluminum tape
METS3-X	1/2 in. X 21 ft. (12.7mm X 6.4m) 316 grade stainless steel tape
METS4-X	1/2 in. X 21 ft. (12.7mm X 6.4m) 304 grade stainless steel tape

**NOTES, UNLESS OTHERWISE SPECIFIED:**

Panduit Tool Number MEHT187 is used to create tags using 1/2" wide metal tape.

This tool's features include:

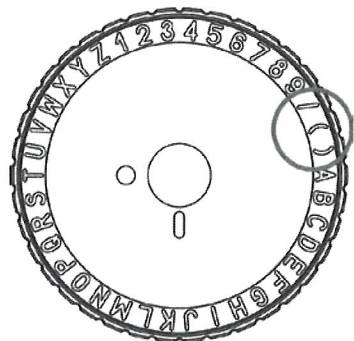
- 3/16" high character embossing wheel
- In-line multifunction cutting die that creates tag complete in single actuation
- Self-adjusting drive roller
- Preview window for centering text
- Preview window for embossed letters
- Preview window for remaining tape amount
- Manual tape advance/reverse wheel with release lever

TOOL WEIGHT: 26.5 oz. (750 gr.)

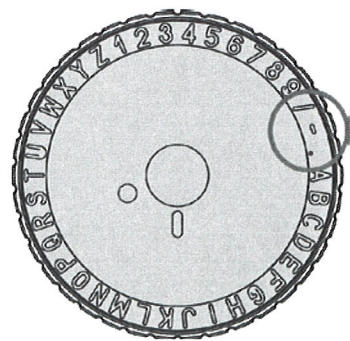
DIMENSIONS SHOWN IN PARENTHESES ARE MILLIMETERS.

REPLACEMENT PARTS: SEE GRAPHIC SHOWN

F:\wrkgrp\rvusers\ENGR DOCS\CUSTOMER DRAWINGS\TM26399B01\_01 MEHT187 CD.doc



WHITE WHEEL  
TM26319B01



GRAY WHEEL  
TM26971B01

REPLACEMENT PARTS

REV	DATE	BY	CHK'D	DESCRIPTION	ECN	- R	CUST	SUP
01	1-15-13	BLR	JEH	ADD REPLC. PARTS	4366		ABJ	
00	12-14-10	BLR	JEH	RELEASED	4366	---	ABJ	

**PANDUIT** CORP. TINLEY PARK, ILLINOIS

**MEHT187  
CUSTOMER DRAWING**

UNLESS OTHERWISE SPECIFIED,  
DIMENSIONAL TOLERANCES ARE:  
(.x) ± --- (.xxx) ± ---  
(.xx) ± --- ANGLES ± ---

UNLESS OTHERWISE SPECIFIED, ALL DIMENSIONS ARE GIVEN IN INCHES, THIRD ANGLE PROJECTION.

DRAWN BY:

BLR

DATE:  
12-14-10

CHK'D:  
JEH

MATL:

SEE  
NOTES

SCALE

NONE

DRAWING NO.

TM26399B01

DWG  
B  
SIZE

## Looking for pricing, stock, or lifecycle information?

Click below to explore more details on WIN SOURCE:

 [View MEHT187 on WIN SOURCE](#)

 [Panduit Corp](#) Information

## Optimize Your Supply Chain with WIN SOURCE Solutions

-  Global Sourcing Solution
-  Obsolete Management
-  Cost Control Management
-  Shortage Management
-  Alternative Solution
-  Excess Inventory Management