



THE DATASHEET OF MB10S-G

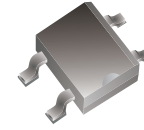


MB2S-G Thru. MB10S-G

Reverse Voltage: 200 to 1000 Volts

Forward Current: 0.8 Amp

RoHS Device

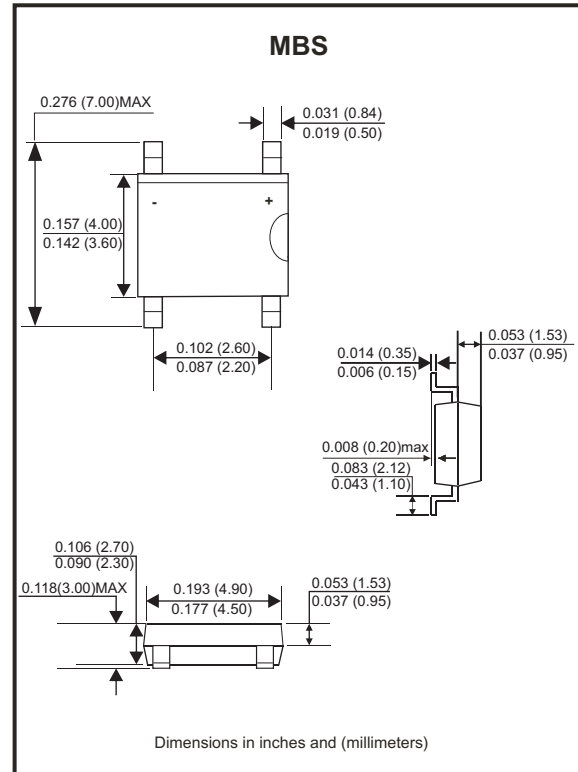


Features

- Ideal for printed circuit board
- High temperature soldering guaranteed:
260°C / 10 seconds /9.5mm
Lead length at 5 lbs.,(2.3kg) tension.

Mechanical data

- Case: Molded plastic.
- Lead: Solder plated.
- Polarity: As marked.
- Weight:0.13 gram(approx.).



Maximum Rating And Electrical Characteristics

Rating at TA=25°C, unless otherwise noted.
Single phase, half wave, 60Hz, resistive or inductive load.
For capacitive load, derate current by 20%.

Parameter	Symbol	MB2S-G	MB4S-G	MB6S-G	MB8S-G	MB10S-G	Unit
Maximum Recurrent Peak Reverse Voltage	V _{RRM}	200	400	600	800	1000	V
Maximum RMS Voltage	V _{RMS}	140	280	420	560	700	V
Maximum DC Blocking Voltage	V _{DC}	200	400	600	800	1000	V
Maximum Average Forward Recurrent Current	I _(AV)	0.8					A
Peak Forward Surge Current, 8.3mS Single Half Sine-wave, Superimposed On Rated Load (JEDEC Method)	I _{FSM}	35					A
Maximum Instantaneous Forward Voltage at 0.4A	V _F	1.0					V
Maximum DC Reverse Current Rated DC Blocking Voltage per leg	@T _J =25°C	5.0					mA
	@T _J =125°C	500					
Typical Thermal Resistance (Note 1) (Note 2)	R _{θJA}	70					°C/W
	R _{θJL}	20					
Operating Temperature Range	T _J	-55 to +150					°C
Storage Temperature Range	T _{STG}	-55 to +150					°C

Notes: 1. On aluminum substrate P.C.B. with an area of 0.8x0.8"(20x20mm) mounted on 0.05x0.05"(1.3x1.3mm) solder pad.
2. On glass epoxy P.C.B. mounted on 0.05x0.05"(1.3x1.3mm) pads.

Rating and Characteristic Curves (MB2S-G Thru. MB10S-G)

Fig.1 - Maximum Forward Current Derating Curve

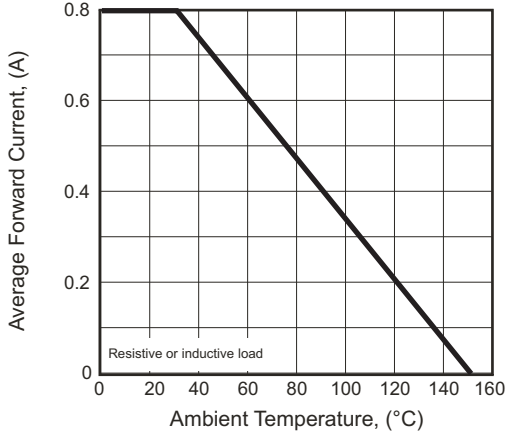


Fig.2 - Maximum Non-repetitive Forward Surge Current Per Bridge Element

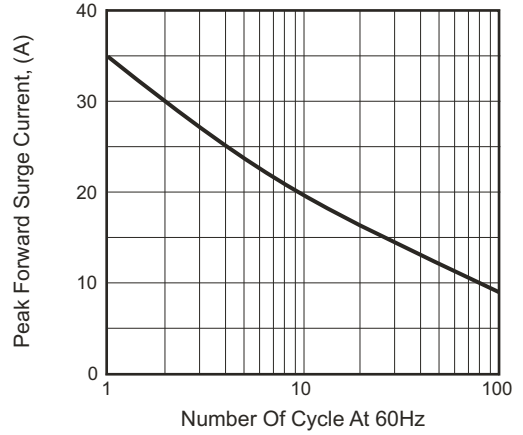


Fig.3 - Typical Instantaneous Forward Characteristics Per Bridge Element

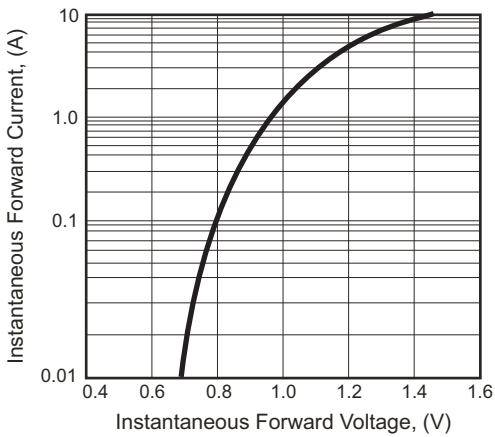
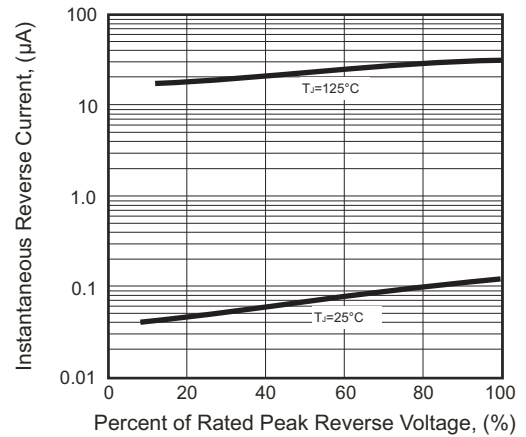
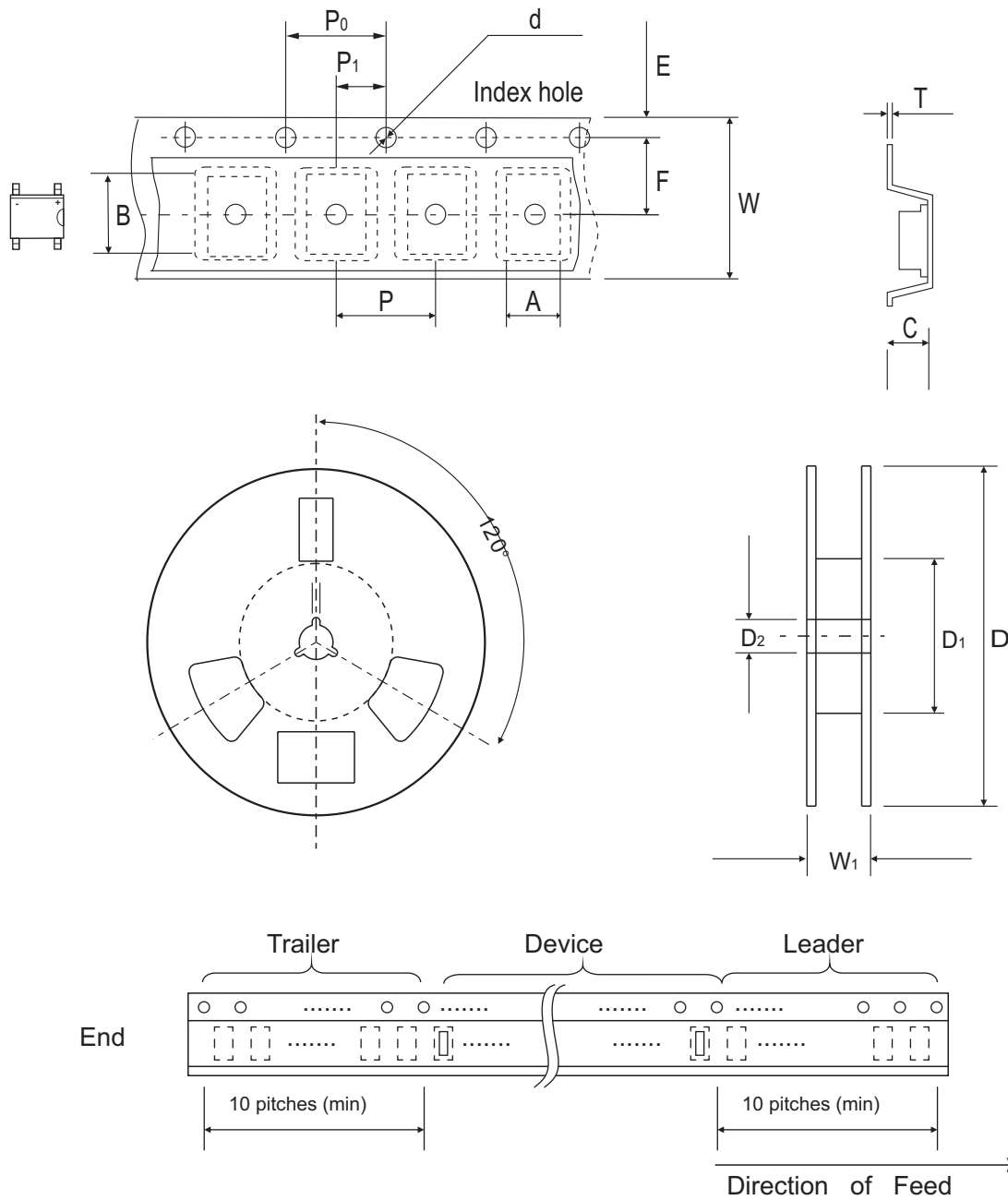


Fig.4 - Typical Reverse Characteristics Per Bridge Element



Reel Taping Specification

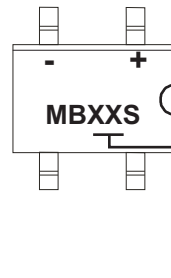


MBS	SYMBOL	A	B	C	d	D	D1	D2
	(mm)	5.00 ± 0.10	7.24 ± 0.10	2.95 ± 0.10	1.55 ± 0.05	330.00 ± 1.00	75.00 ± 1.00	14.00 ± 0.50
	(inch)	0.197 ± 0.004	0.285 ± 0.004	0.116 ± 0.004	0.061 ± 0.002	12.992 ± 0.039	2.953 ± 0.039	0.551 ± 0.020

MBS	SYMBOL	E	F	P	P0	P1	W	W1
	(mm)	1.75 ± 0.10	5.50 ± 0.05	8.00 ± 0.10	4.00 ± 0.10	2.00 ± 0.05	12.00 ± 0.30	18.4 ± 0.50
	(inch)	0.069 ± 0.004	0.217 ± 0.002	0.315 ± 0.004	0.157 ± 0.004	0.079 ± 0.002	0.472 ± 0.012	0.724 ± 0.020

Marking Code

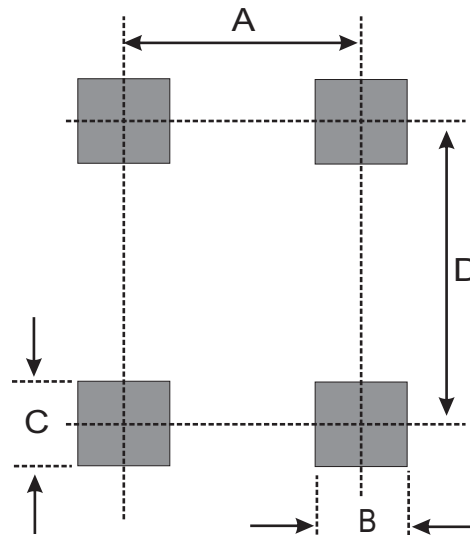
Part Number	Marking Code
MB2S-G	MB2S
MB4S-G	MB4S
MB6S-G	MB6S
MB8S-G	MB8S
MB10S-G	MB10S



X/XX = Product type marking code

Suggested PAD Layout

SIZE	MBS	
	(mm)	(inch)
A	2.40	0.094
B	0.90	0.035
C	1.84	0.072
D	6.00	0.236



Standard Packaging

Case Type	Qty Per Reel	Reel Size
	(Pcs)	(inch)
MBS	2,500	13

Looking for pricing, stock, or lifecycle information?

Click below to explore more details on WIN SOURCE:

- [View MB10S-G on WIN SOURCE](#)
- [Comchip Technology Information](#)

Optimize Your Supply Chain with WIN SOURCE Solutions

- ✓ Global Sourcing Solution
- ✓ Obsolete Management
- ✓ Cost Control Management
- ✓ Shortage Management
- ✓ Alternative Solution
- ✓ Excess Inventory Management