

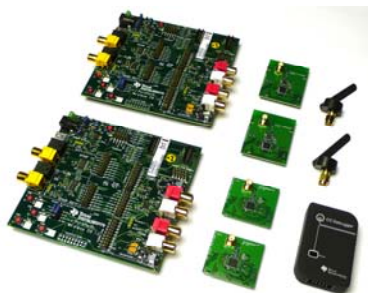


THE DATASHEET OF CC85XXDK



CC85XXDK Quick Start Guide

1. Kit Contents



The following items are included in the CC85XXDK:

- 2 x Purepath Wireless AudioEB
- 1 x CC Debugger
- 2 x CC85xxEM
- 2 x CC85xx+CC2590EM
- 2 x 2.4 GHz Antennas
- Cables
- Documentation

If anything is missing in the CC85xxDK please contact your local TI sales representative.

2. Purpose of this Quick Start Guide

This quick start guide will provide step-by-step instructions showing how to set up an audio link between two wireless units provided in the development kit. The procedure is the same regardless of which evaluation module is being used, i.e. either the C85xxEM or the CC85xx-CC2590EM.

The EMs are pre-programmed with firmware to stream audio from the (Master) line-in input of one AudioEB to the (Slave) line-out and headphone output on the other AudioEB. Please follow step 2 to 9. For the latest firmware revision see step 10.

For more details on CC85xx, see the product folder of the CC8520 [1].

3. Plug Master EM into PPW Audio EB



Connect the CC85xxEM or the CC85xx-CC2590EM marked MASTER (label attached on the backside of the board). These boards are pre-programmed with master firmware. Attach the antenna to the SMA connector.

4. Plug Slave EM into PPW Audio EB



Connect the CC85xxEM or the CC85xx-CC2590EM marked SLAVE (label attached on the backside of the board.) These boards are pre-programmed with slave firmware. Attach the antenna to the SMA connector.

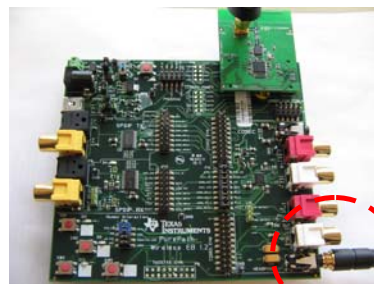
5. Connect Audio Cables to the Master



Connect an audio source (CD-player, MP3-player or similar) to the line-in input of the AudioEB with CC85xxEM or CC85xx-CC2590 with the "MASTER" label plugged in.

The CC85xx-CC2590EM and CC85xxEM with the "MASTER" label are pre-programmed with firmware which sets up the onboard TLV320AIC3101 codec [2] to use analog input on the PPW AudioEB.

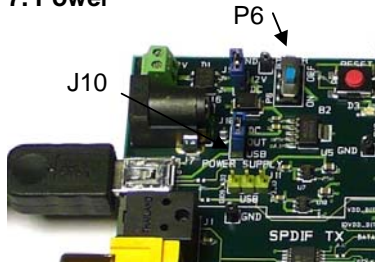
6. Connect Audio Cables to the Slave



Connect an amplifier to line out or connect a headphone to the mini jack of the AudioEB with the CC85xxEM or the CC85xx-CC2590 with the "SLAVE" label plugged in.

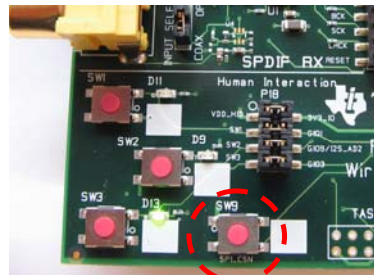
The CC85xx-CC2590EM and CC85xxEM with the "SLAVE" label are pre-programmed with firmware which sets up the onboard TLV320AIC3101 codec [2] to use line out and headphone output of the PPW AudioEB.

7. Power



To power the PPW AudioEBs; connect a USB cable to each of the PPW AudioEBs and make sure J10 is in the position "OUT-USB" (Pos 1-2). Finally, switch P6 to "ON". The LED D3 should now be lit.

8. Pairing



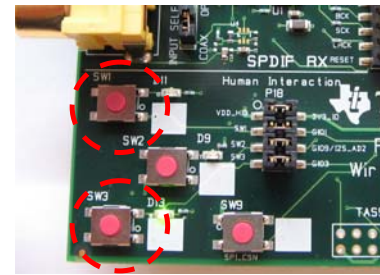
When powered for the first time, LED D9 will blink to indicate that the devices are not connected.

To pair the Slave with the Master; click first on SW9 on Master and then click on SW9 on the Slave within a few seconds after you clicked on the Masters SW9. When the devices are paired and the link is established, LED D9 will be constantly lit.

Note that the pairing operation is only needed the first time. Next time they will pair automatically when powered.

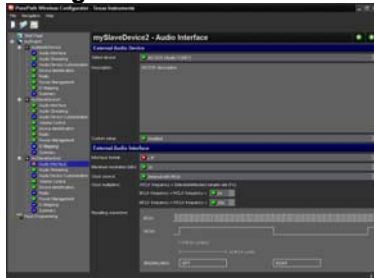
You can now turn on your audio source and start testing!

9. Volume control



The output volume can be adjusted on the Slave by pressing SW 1 to increase the volume and SW3 to decrease the volume.

10. PurePath Wireless Configurator



The next step is to download the PurePath Wireless Configurator (PPWC). PPWC makes it possible to explore all the configuration options of the CC85xx family. After creating device configurations for Master and Slave network roles, PPWC can program the CC85xx devices directly through the CCDebugger (included in the kit).

For more details; download the PPW Configurator and the PPW Configurator Quick Start Guide. Links to download the PPW Configurator can be found in the CC8520 product folder [1]

A. More information

On Texas Instruments' Low-Power RF web site you will find all our latest products, application and design notes, FAQ section, news and events updates, and much more. Just go to www.ti.com/lprf

The Low Power RF Online Community has forums, blogs and videos. Use the forums to find information, discuss and get help with your design. Join us at www.ti.com/lprf-forum

The TI LPRF eNewsletter keeps you up to date on e.g. new products, application notes, software and events. Sign up at www.ti.com/lprfnewsletter

We hope you will enjoy working with the CC8520 and associated Low-Power RF products from Texas Instruments.

B. References

[1] CC8520 product web page

<http://www.ti.com/CC8520>

[2] TLV320AIC3101 product web page

<http://focus.ti.com/docs/prod/folders/print/tlv320aic3101.html>

IMPORTANT NOTICE

Texas Instruments Incorporated and its subsidiaries (TI) reserve the right to make corrections, modifications, enhancements, improvements, and other changes to its products and services at any time and to discontinue any product or service without notice. Customers should obtain the latest relevant information before placing orders and should verify that such information is current and complete. All products are sold subject to TI's terms and conditions of sale supplied at the time of order acknowledgment.

TI warrants performance of its hardware products to the specifications applicable at the time of sale in accordance with TI's standard warranty. Testing and other quality control techniques are used to the extent TI deems necessary to support this warranty. Except where mandated by government requirements, testing of all parameters of each product is not necessarily performed.

TI assumes no liability for applications assistance or customer product design. Customers are responsible for their products and applications using TI components. To minimize the risks associated with customer products and applications, customers should provide adequate design and operating safeguards.

TI does not warrant or represent that any license, either express or implied, is granted under any TI patent right, copyright, mask work right, or other TI intellectual property right relating to any combination, machine, or process in which TI products or services are used. Information published by TI regarding third-party products or services does not constitute a license from TI to use such products or services or a warranty or endorsement thereof. Use of such information may require a license from a third party under the patents or other intellectual property of the third party, or a license from TI under the patents or other intellectual property of TI.

Reproduction of TI information in TI data books or data sheets is permissible only if reproduction is without alteration and is accompanied by all associated warranties, conditions, limitations, and notices. Reproduction of this information with alteration is an unfair and deceptive business practice. TI is not responsible or liable for such altered documentation. Information of third parties may be subject to additional restrictions.

Resale of TI products or services with statements different from or beyond the parameters stated by TI for that product or service voids all express and any implied warranties for the associated TI product or service and is an unfair and deceptive business practice. TI is not responsible or liable for any such statements.

TI products are not authorized for use in safety-critical applications (such as life support) where a failure of the TI product would reasonably be expected to cause severe personal injury or death, unless officers of the parties have executed an agreement specifically governing such use. Buyers represent that they have all necessary expertise in the safety and regulatory ramifications of their applications, and acknowledge and agree that they are solely responsible for all legal, regulatory and safety-related requirements concerning their products and any use of TI products in such safety-critical applications, notwithstanding any applications-related information or support that may be provided by TI. Further, Buyers must fully indemnify TI and its representatives against any damages arising out of the use of TI products in such safety-critical applications.

TI products are neither designed nor intended for use in military/aerospace applications or environments unless the TI products are specifically designated by TI as military-grade or "enhanced plastic." Only products designated by TI as military-grade meet military specifications. Buyers acknowledge and agree that any such use of TI products which TI has not designated as military-grade is solely at the Buyer's risk, and that they are solely responsible for compliance with all legal and regulatory requirements in connection with such use.

TI products are neither designed nor intended for use in automotive applications or environments unless the specific TI products are designated by TI as compliant with ISO/TS 16949 requirements. Buyers acknowledge and agree that, if they use any non-designated products in automotive applications, TI will not be responsible for any failure to meet such requirements.

Following are URLs where you can obtain information on other Texas Instruments products and application solutions:

Products		Applications	
Amplifiers	amplifier.ti.com	Audio	www.ti.com/audio
Data Converters	dataconverter.ti.com	Automotive	www.ti.com/automotive
DLP® Products	www.dlp.com	Communications and Telecom	www.ti.com/communications
DSP	dsp.ti.com	Computers and Peripherals	www.ti.com/computers
Clocks and Timers	www.ti.com/clocks	Consumer Electronics	www.ti.com/consumer-apps
Interface	interface.ti.com	Energy	www.ti.com/energy
Logic	logic.ti.com	Industrial	www.ti.com/industrial
Power Mgmt	power.ti.com	Medical	www.ti.com/medical
Microcontrollers	microcontroller.ti.com	Security	www.ti.com/security
RFID	www.ti-rfid.com	Space, Avionics & Defense	www.ti.com/space-avionics-defense
RF/IF and ZigBee® Solutions	www.ti.com/lprf	Video and Imaging	www.ti.com/video
		Wireless	www.ti.com/wireless-apps

Mailing Address: Texas Instruments, Post Office Box 655303, Dallas, Texas 75265
Copyright © 2010, Texas Instruments Incorporated

Looking for pricing, stock, or lifecycle information?

Click below to explore more details on WIN SOURCE:

 [View CC85XXDK](#) on WIN SOURCE

 [Texas Instruments](#) Information

Optimize Your Supply Chain with WIN SOURCE Solutions

-  Global Sourcing Solution
-  Obsolete Management
-  Cost Control Management
-  Shortage Management
-  Alternative Solution
-  Excess Inventory Management