



**THE DATASHEET OF
MTLW-104-05-G-S-140**

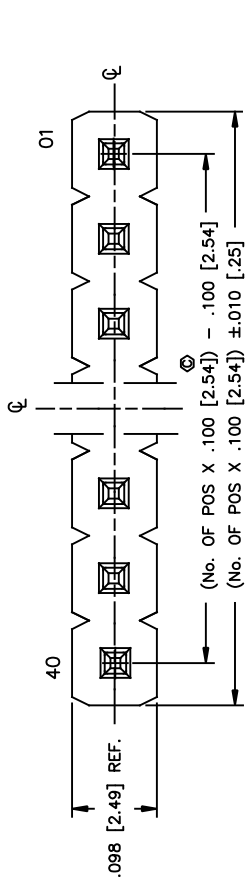


DO NOT SCALE FROM THIS PRINT.

UNLESS OTHERWISE NOTED DIMENSIONS ARE IN INCHES

TOLERANCES ARE IN INCHES

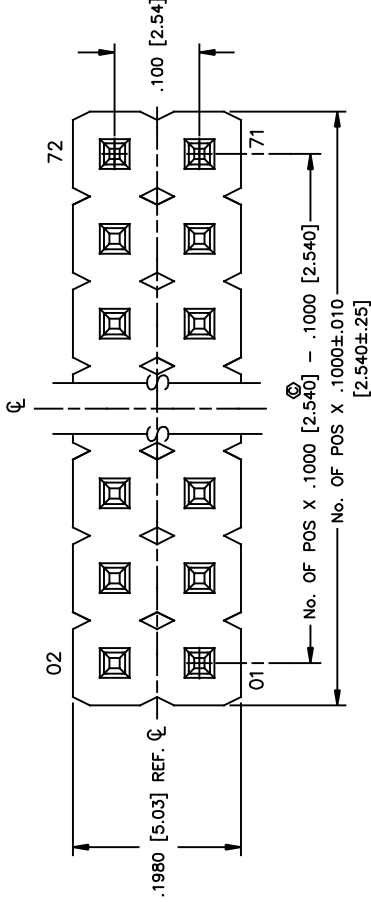
ONE PLACE DECIMALS ± .1 [.3] THREE PLACE DECIMALS ± .005 [.13]
TWO PLACE DECIMALS ± .01 [.3] FOUR PLACE DECIMALS ± .0020 [.05]



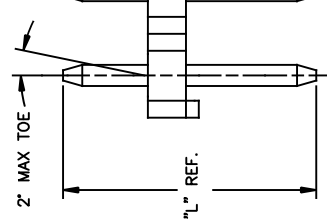
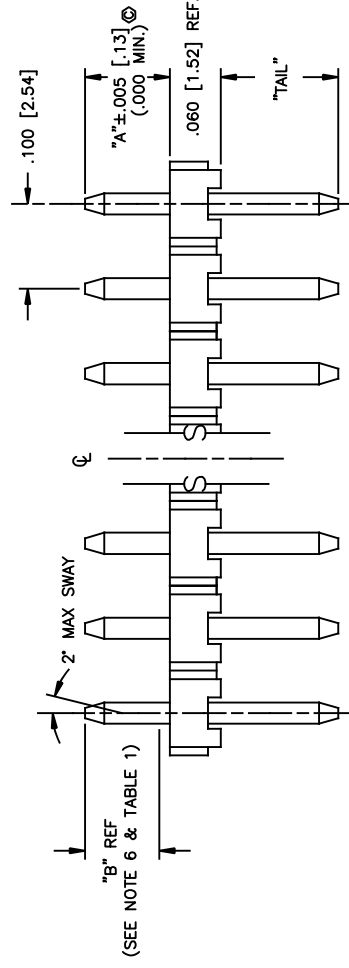
MTLW-1XX

No. OF POSITIONS
-01 THRU -40 (SINGLE)
-01 THRU -36 (DOUBLE)

LEAD STYLE
SEE TABLE 1



PLATING SPECIFICATION
-G: GOLD, 10 Au / 50 Ni MIN ON CO
3 Au / 50 Ni MIN ON TAIL
-T: MATTE TIN CONTACT AND TAIL
-S: SELECTIVE, 30 Au / 50 Ni MIN ON
MATTE TIN TAIL
-H: HEAVY GOLD, 30 Au / 50 Ni MIN
3 Au / 50 Ni MIN ON TAIL
-F: FLASH SELECTIVE, 3 Au / 50 Ni
MATTE TIN TAIL
-L: LIGHT SELECTIVE, 10 Au / 50 Ni
MATTE TIN TAIL
-TM: MATTE TIN CONTACT AND TAIL
SELECTIVE, 30 Au / 50 Ni ON CO
-LM: LIGHT SELECTIVE, 10 Au / 50 Ni
MATTE TIN TAIL
-FM: FLASH SELECTIVE, 3 Au / 50 Ni M
MATTE TIN TAIL



NOTES:
1.) MAX AL
2.) TERMIN
3.) MAX P
4.) REP
5.) MAX C
6.) GOLD
7.) ORIENT
IN THE

MATERIAL:
LCP, UL 94 V0
COLOR: BLACK

TERMINALS:
PHOSPHOR BRONZE ALLOY
TENSILE RANGE 95-105 KSI

TABLE 1



LEAD STYLE	TERMINAL	"L"	"A" (FOR .090 TAIL)	"B"
-05	T-1S6-21-XX-2	.335 [8.51]	.185 [4.70]	.050 [1.27]
-06	T-1S6-18-XX-2	.300 [7.62]	.150 [3.81]	.050 [1.27]
-07	T-1S6-07-XX-2	.430 [10.92]	.280 [7.11]	.165 [4.19]
-08	T-1S6-08-XX-2	.530 [13.46]	.380 [9.65]	.165 [4.19]
-09	T-1S6-09-XX-2	.730 [18.54]	.580 [14.73]	.165 [4.19]
-10	T-1S6-10-XX-2	.830 [21.08]	.680 [17.27]	.165 [4.19]
-22	T-1S6-15-XX-2	.630 [16.00]	.480 [12.19]	.165 [4.19]
-23	T-1S6-16-XX-2	.445 [11.30]	.295 [7.49]	.165 [4.19]
-24	T-1S6-17-XX-2	.480 [12.19]	.330 [8.38]	.165 [4.19]

CRITICAL DIMENSION INSPECTION INSTRUCTION TABLE	
ASSEMBLY OPERATION	IN-PROCESS INSPECTION
FILL	*C1, C5
2ND PRESS	*C1
REPRESS	*C1
CRIMP	C4
MULTI CUT	C2, C3
* WHEREVER APPLIES	

PROPRIETARY NOTE
THIS DOCUMENT IS UNCLASSIFIED AND IS NOT TO BE REPRODUCED OR TRANSMITTED IN ANY FORM OR BY ANY MEANS, ELECTRONIC OR MECHANICAL, INCLUDING PHOTOCOPYING, RECORDING, OR BY ANY INFORMATION STORAGE AND RETRIEVAL SYSTEM, WITHOUT THE WRITTEN PERMISSION OF THE COMPANY.

Looking for pricing, stock, or lifecycle information?

Click below to explore more details on WIN SOURCE:

-  [View MTLW-104-05-G-S-140 on WIN SOURCE](#)
-  [Samtec Inc. Information](#)

Optimize Your Supply Chain with WIN SOURCE Solutions

-  Global Sourcing Solution
-  Obsolete Management
-  Cost Control Management
-  Shortage Management
-  Alternative Solution
-  Excess Inventory Management