



# THE DATASHEET OF FSH-125-01-L-DH

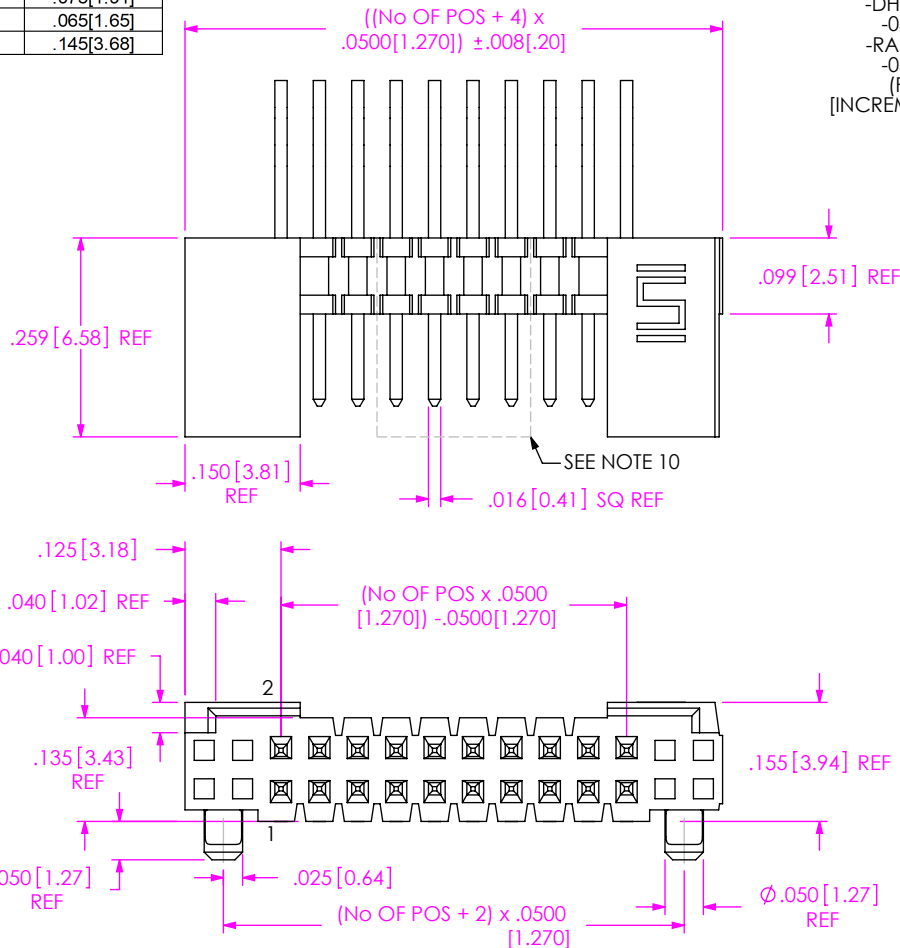
[www.win-source.net](http://www.win-source.net)



0086-755-83957316

DO NOT SCALE FROM THIS PRINT

TABLE 1	
STYLE	"A"
-01	.120[3.05]
-02	.075[1.91]
-03	.065[1.65]
-04	.145[3.68]



FSH-1XX-XX-XXX-XX-XX-X-XX

**No OF POSITIONS**  
 -DH ROW SPEC:  
 -05 THRU -25  
 -RA ROW SPEC:  
 -05 THRU -46  
 (PER ROW)  
 [INCREMENTS OF 5 STD]

**LEAD STYLE**  
 -01  
 -02  
 -03  
 -04

**PLATING SPECIFICATION**

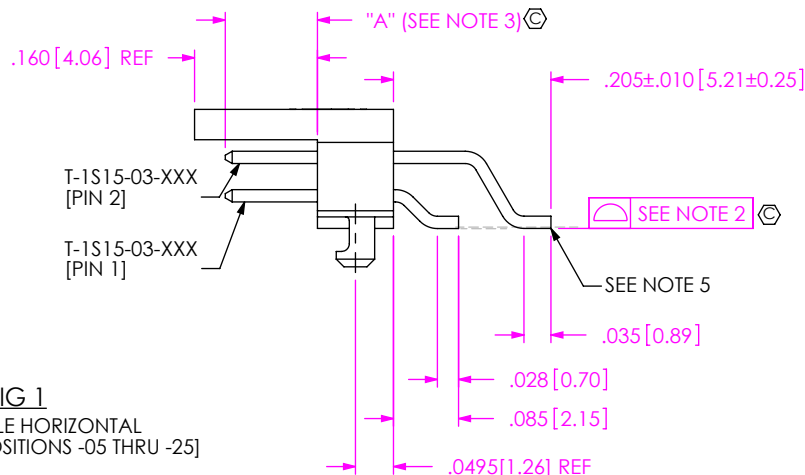
-L: LIGHT SELECTIVE (USE T-1S15-XX-L)  
 -F: FLASH SELECTIVE (USE T-1S15-XX-F)  
 -S: SELECTIVE GOLD/MATTE TIN TAIL (USE T-1S15-XX-S)  
 -LM: LIGHT SELECTIVE GOLD/MATTE TIN TAIL (USE T-1S15-XX-LM)  
 -FM: FLASH SELECTIVE GOLD/MATTE TIN TAIL (USE T-1S15-XX-FM)  
 -STL: SELECTIVE GOLD CONTACT, TIN/LEAD TAIL (USE T-1S15-XX-STL)  
 -FTL: FLASH SELECTIVE GOLD CONTACT, TIN/LEAD TAIL (USE T-1S15-XX-FTL)

**PACKAGING**  
 BLANK: TUBES (SEE NOTE 13)  
 -TR: TAPE & REEL (SEE NOTES 14 & 15)  
 (NOT AVAILABE WITH -RA)  
 -FR: FULL REEL QTY TAPE & REEL  
 (SEE NOTES 15 & 14)  
 (NOT AVAILABE WITH -RA)  
**PICK AND PLACE OPTION**  
 -C: POLYIMIDE FILM (USE K-DOT-.177-.281-.005)  
 (10 POSITION MIN) (SEE FIG 3, SHT 2)  
 (NOT AVAILABE WITH -RA)

**OPTION**  
 -SL: SOLDER LOCKS

**ROW/TAIL SPECIFICATION**  
 -DH: DOUBLE HORIZONTAL  
 (USE FSH-XX-D-ES-XX-XX)  
 -RA: RIGHT ANGLE  
 (USE FSH-XX-D-ES-XX-XX)

- NOTES:
- ⊗ REPRESENTS A CRITICAL DIMENSION.
  - COPLANARITY TO INCLUDE INSULATOR: .0060[.152].
  - MAXIMUM HEIGHT VARIATION BETWEEN ROWS: .005[.13].
  - MINIMUM PUSHOUT FORCE: 5 LB.
  - MAXIMUM BURR ALLOWED [SHEARED TAILS]: .002[.05].
  - MAXIMUM ALLOWABLE BOW: .002[.05] INCH/INCH AFTER ASSEMBLY.
  - ALL FIRST ROW PINS TO BE .001 BELOW TO .003 ABOVE BODY (SEE SHT 3).
  - MAX FLASH TO BE .015[.38].
  - END SHROUDS NOT TO BE CUT.
  - POSITIONS 13-28 (ONCE CUT) TO HAVE 1 TAB EVENLY SPACED BETWEEN THE FIRST AND LAST CORE. POSITIONS 29-46 TO HAVE TWO TABS EVENLY SPACED BETWEEN THE FIRST AND LAST CORES.
  - FOR POSITIONS 13-27, MIDDLE SHROUD WILL NOT BE CENTERED FOR ODD POSITION PARTS.
  - ALL SECOND ROW PINS TO BE .003 BELOW TO .003 ABOVE BODY (SEE SHT 4).
  - TUBES ARE STANDARD PACKAGING.
  - ORDERS WILL BE PACKAGED ACCORDING TO THE SAMTEC PACKAGING EFFICIENCY STANDARDS (SPES) FOUND ON WWW.SAMTEC.COM.
  - ATTACH LABEL ON EACH REEL.



**FIG 1**  
 -DH: DOUBLE HORIZONTAL  
 [AVAILABLE IN POSITIONS -05 THRU -25]

**PATENT NUMBERS**  
 6159045

UNLESS OTHERWISE SPECIFIED, DIMENSIONS ARE IN INCHES. TOLERANCES ARE: DECIMALS      ANGLES .XX: ±.01[.3] .XXX: ±.005[.13] .XXXX: ±.0020[.051]	* <b>PROPRIETARY NOTE</b> * THIS DOCUMENT CONTAINS CONFIDENTIAL AND PROPRIETARY INFORMATION AND ALL DESIGN, MANUFACTURING, REPRODUCTION, USE, PATENT RIGHTS AND SALES RIGHTS ARE EXPRESSLY RESERVED BY SAMTEC, INC. THIS DOCUMENT SHALL NOT BE DISCLOSED, IN WHOLE OR PART, TO ANY UNAUTHORIZED PERSON OR ENTITY NOR REPRODUCED, TRANSFERRED OR INCORPORATED IN ANY OTHER PROJECT IN ANY MANNER WITHOUT THE EXPRESS WRITTEN CONSENT OF SAMTEC, INC.	<p>520 PARK EAST BLVD, NEW ALBANY, IN 47150                  PHONE: 812-944-6733    FAX: 812-948-5047                  e-Mail: info@SAMTEC.com    code: 55322</p>

FIG 2

-RA: RIGHT ANGLE  
(SAME AS FIG 1, UNLESS OTHERWISE STATED)  
[AVAILABLE IN POSITIONS -05 THRU -46]

TABLE 2	
STYLE	"B"
-01	.120[3.05]
-02	.075[1.91]
-03	.065[1.65]
-04	.145[3.68]

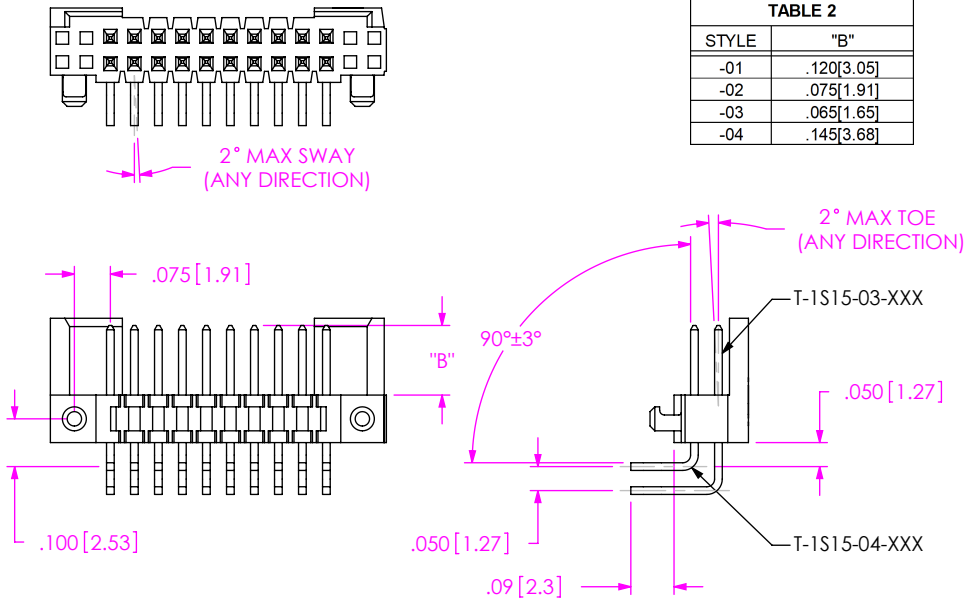
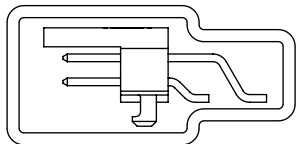
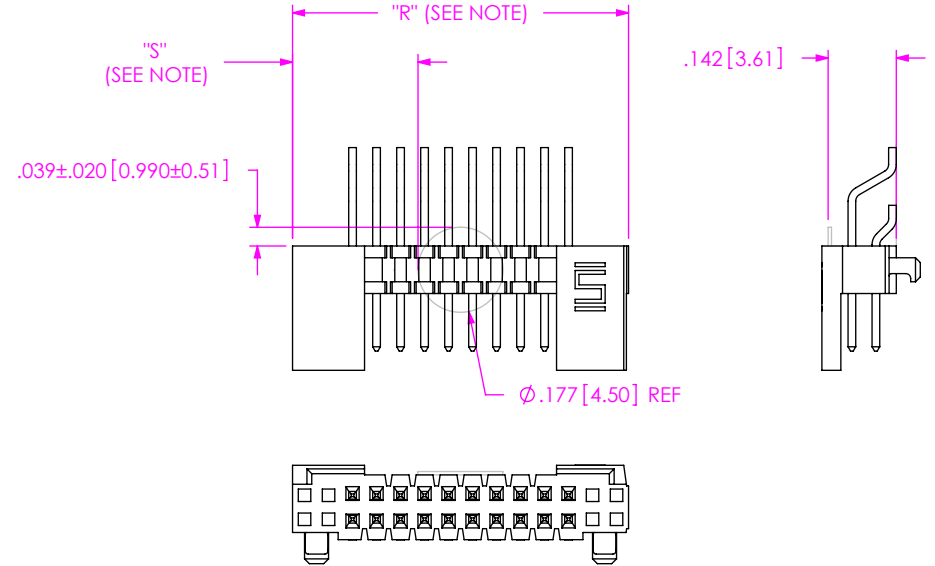


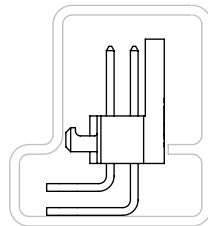
FIG 3

-C: POLYIMIDE FILM  
NOTE: "R" = USE MEASURED DIMENSION (REF)  
"S" =  $\{("R" - .1772[4.501]) / 2\} \pm .020[.51]$



-DH  
TUBE: PT-1-24-02-53  
PLUG: TP-09

PACKAGING VIEW  
TUBE ALL POSITIONS



-RA  
TUBE: PT-1-24-01-45  
PLUG: TP-07

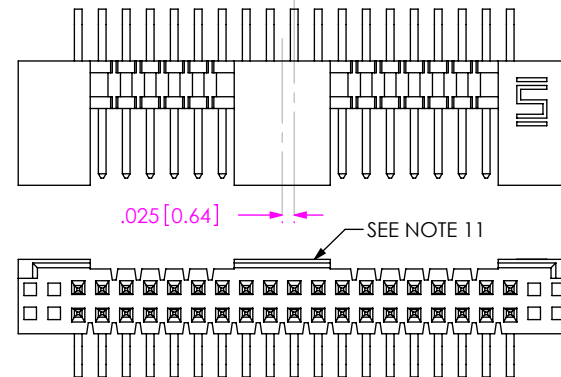


FIG 4  
FSH-119-XX-XX-RA-XX  
SHOWN

F:\DWG\MISC\MKTG\FSH-1XX-XX-XXX-XX-XX-X-XX-MKT.SLDRW

**PROPRIETARY NOTE**  
THIS DOCUMENT CONTAINS CONFIDENTIAL AND PROPRIETARY INFORMATION AND ALL DESIGN, MANUFACTURING, REPRODUCTION, USE, PATENT RIGHTS AND SALES RIGHTS ARE EXPRESSLY RESERVED BY SAMTEC, INC. THIS DOCUMENT SHALL NOT BE DISCLOSED, IN WHOLE OR PART, TO ANY UNAUTHORIZED PERSON OR ENTITY NOR REPRODUCED, TRANSFERRED OR INCORPORATED IN ANY OTHER PROJECT IN ANY MANNER WITHOUT THE EXPRESS WRITTEN CONSENT OF SAMTEC, INC.

DO NOT SCALE DRAWING

SHEET SCALE: 2.5:1



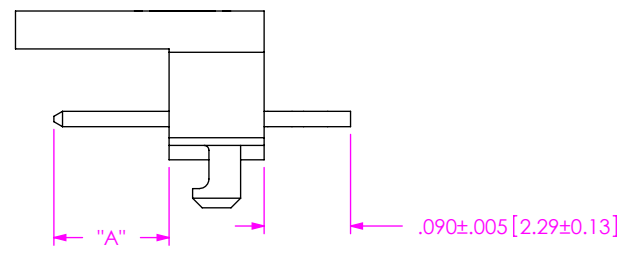
520 PARK EAST BLVD, NEW ALBANY, IN 47150  
PHONE: 812-944-6733 FAX: 812-948-5047  
e-Mail: info@SAMTEC.com code: 55322

DESCRIPTION:  
.050 SHROUDED TERMINAL ASSEMBLY

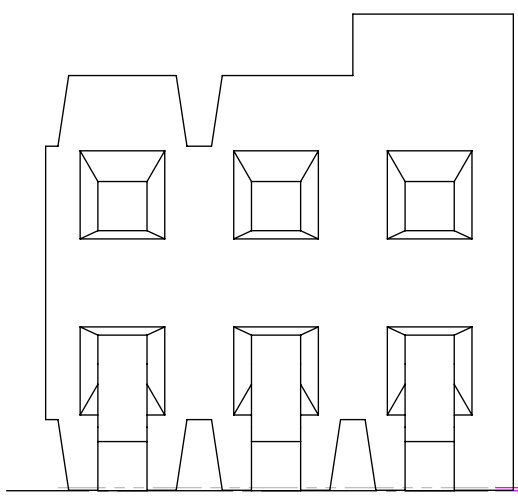
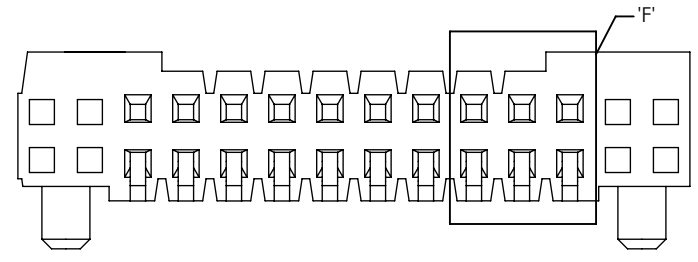
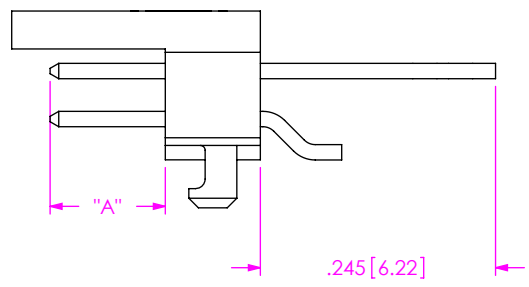
DWG. NO.  
FSH-1XX-XX-XXX-XX-XX-X-XX

BY: DEANP 9/8/1999 SHEET 2 OF 4

IN-PROCESS 1



IN-PROCESS 2  
(AFTER FIRST ROW FORMED)



$.001 \pm .002 [0.03 \pm 0.05]$   
(SEE NOTE 7)

DETAIL 'F'  
SCALE 16:1

**PROPRIETARY NOTE**  
THIS DOCUMENT CONTAINS CONFIDENTIAL AND PROPRIETARY INFORMATION AND ALL DESIGN, MANUFACTURING, REPRODUCTION, USE, PATENT RIGHTS AND SALES RIGHTS ARE EXPRESSLY RESERVED BY SAMTEC, INC. THIS DOCUMENT SHALL NOT BE DISCLOSED, IN WHOLE OR PART, TO ANY UNAUTHORIZED PERSON OR ENTITY NOR REPRODUCED, TRANSFERRED OR INCORPORATED IN ANY OTHER PROJECT IN ANY MANNER WITHOUT THE EXPRESS WRITTEN CONSENT OF SAMTEC, INC.

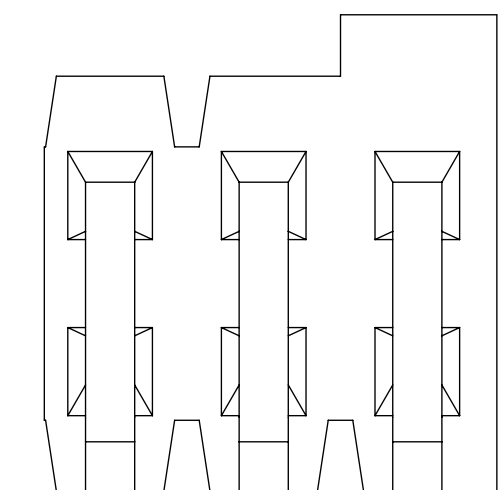
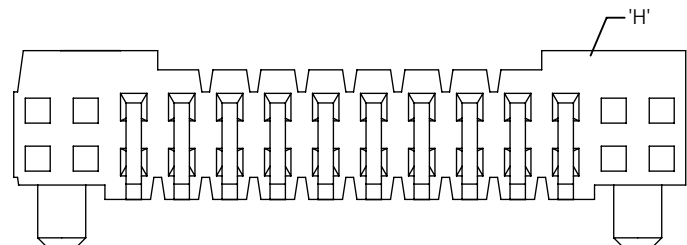
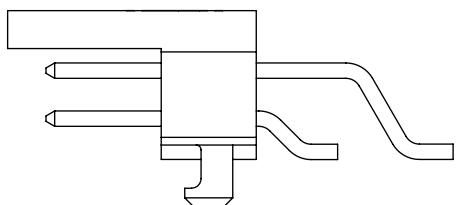
**samtec**  
520 PARK EAST BLVD., NEW ALBANY, IN 47150  
PHONE: 812-944-6733 FAX: 812-948-5047  
e-Mail: info@SAMTEC.com code: 55322

SHEET SCALE: 2.5:1

DESCRIPTION:  
.050 SHROUDED TERMINAL ASSEMBLY

DWG. NO.  
FSH-1XX-XX-XXX-XX-XX-X-XX

BY: DEANP 9/8/1999 SHEET 3 OF 4



$.000 \pm .003 [0.00 \pm 0.08]$   
(SEE NOTE 12)

DETAIL 'H'  
SCALE 16:1

PROPRIETARY NOTE  
THIS DOCUMENT CONTAINS CONFIDENTIAL AND PROPRIETARY INFORMATION AND ALL DESIGN, MANUFACTURING, REPRODUCTION, USE, PATENT RIGHTS AND SALES RIGHTS ARE EXPRESSLY RESERVED BY SAMTEC, INC. THIS DOCUMENT SHALL NOT BE DISCLOSED, IN WHOLE OR PART, TO ANY UNAUTHORIZED PERSON OR ENTITY NOR REPRODUCED, TRANSFERRED OR INCORPORATED IN ANY OTHER PROJECT IN ANY MANNER WITHOUT THE EXPRESS WRITTEN CONSENT OF SAMTEC, INC.



520 PARK EAST BLVD, NEW ALBANY, IN 47150  
PHONE: 812-944-6733 FAX: 812-948-5047  
e-Mail: info@SAMTEC.com code: 55322

SHEET SCALE: 2.5:1


DESCRIPTION:  
.050 SHROUDED TERMINAL ASSEMBLY

DWG. NO.  
FSH-1XX-XX-XXX-XX-XX-X-XX

BY: DEANP 9/8/1999 SHEET 4 OF 4


## Looking for pricing, stock, or lifecycle information?

Click below to explore more details on WIN SOURCE:

 [View FSH-125-01-L-DH on WIN SOURCE](#)

 [Samtec Inc. Information](#)

## Optimize Your Supply Chain with WIN SOURCE Solutions

-  Global Sourcing Solution
-  Obsolete Management
-  Cost Control Management
-  Shortage Management
-  Alternative Solution
-  Excess Inventory Management