

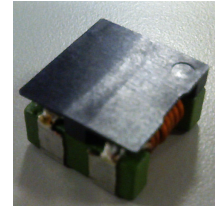


THE DATASHEET OF CPFC11D60-100M08

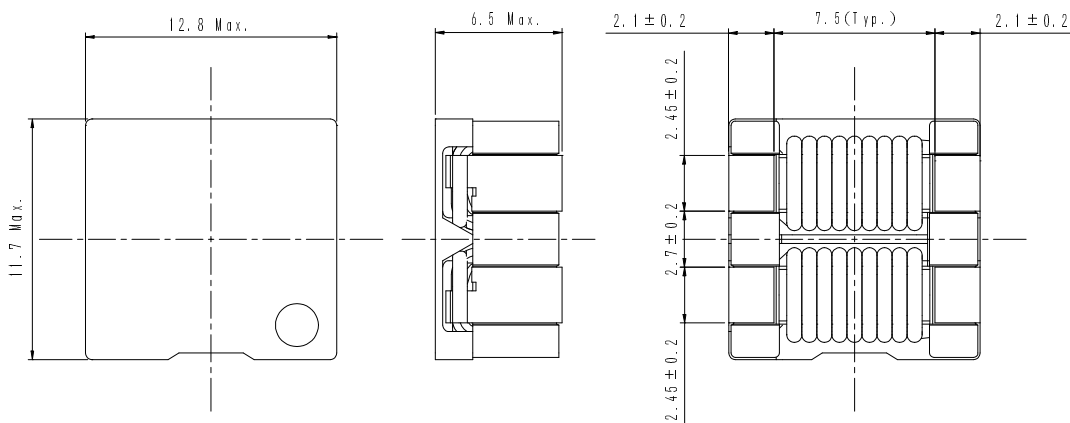
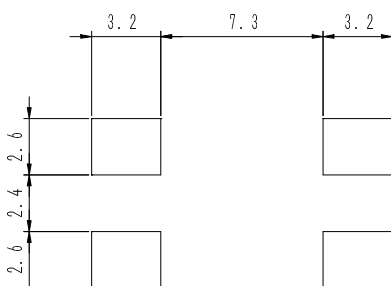
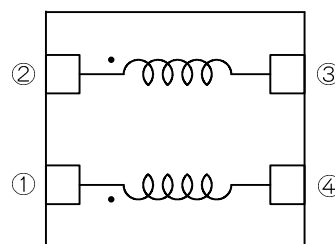


Type: CPFC11D60
◆ Product Description

- 12.8 × 11.7mm Max.(L×W), 6.5mm Max. Height .
- Custom design is available.


◆ Feature

- For medical machines and automotive related applications.
- Of high reliabilities.
- RoHS Compliance

◆ Dimensions (mm)

◆ Land Pattern (mm)

◆ Schematics (Bottom)

◆ Specification

Part Name.	Stamp	Impedance (1,2-3,4) 100MHz	D.C.R (1-4) and (2-3)	Rated Current (1-2) ※1 (3-4)short
CPFC11D60-100M08	122	800Ω Min. (1265 Ω typ.)	8.0mΩ Max.	6.0A

※1. Rated Current: The DC current at which the temperature rise is $\Delta t = 40^{\circ}\text{C}$. ($T_a = 20^{\circ}\text{C}$)

Looking for pricing, stock, or lifecycle information?

Click below to explore more details on WIN SOURCE:

- ⊖ [View CPFC11D60-100M08 on WIN SOURCE](#)
- ⊖ [Sumida America Components Inc. Information](#)

Optimize Your Supply Chain with WIN SOURCE Solutions

- ✓ Global Sourcing Solution
- ✓ Obsolete Management
- ✓ Cost Control Management
- ✓ Shortage Management
- ✓ Alternative Solution
- ✓ Excess Inventory Management