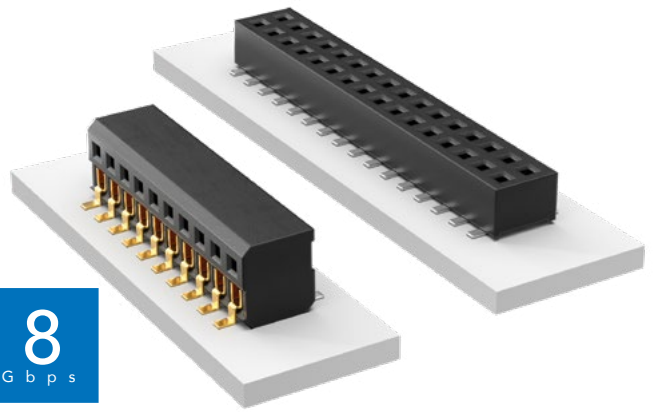




**THE DATASHEET OF  
CLP-110-02-F-D-K-TR**



# LOW PROFILE DUAL WIPE SOCKET



(1.27 mm) .050" PITCH • CLP SERIES

## CLP

Mates:  
FTSH, FTS, FW



### SPECIFICATIONS

**Insulator Material:**  
Black Liquid Crystal Polymer  
**Contact Material:**  
Phosphor Bronze  
**Plating:**  
Sn or Au over  
50 μ" (1.27 μm) Ni  
**Current Rating (CLP/FTSH):**  
3.4 A per pin  
(2 pins powered)  
**Voltage Rating:**  
280 VAC/395 VDC  
**Operating Temp Range:**  
-55 °C to +125 °C  
**Insertion Depth:**  
Top Entry =  
(1.40 mm) .055" minimum  
Bottom Entry =  
(2.41 mm) .095" minimum  
plus board thickness  
DH Entry =  
(2.31 mm) .091" to (2.67 mm) .105"  
**Max Cycles:**  
100 with 10 μ" (0.25 μm) Au

### PROCESSING

**Lead-Free Solderable:**  
Yes  
**SMT Lead Coplanarity:**  
(0.10 mm) .004" max (02-35)  
(0.15 mm) .006" max (36-50)\*  
\*(.004" stencil solution  
may be available; contact  
ipg@samtec.com)

02 thru 50

**-F**  
= Gold flash on contact, Matte Tin on tail

**-L**  
= 10 μ"  
(0.25 μm)  
Gold on contact, Matte Tin on tail

**-G**  
= 10 μ"  
(0.25 μm)  
Gold  
(-D only)

**-D**  
= Double Row

**-DH**  
= Double Horizontal  
(Requires FTSH-04 lead style)

**-BE**  
= Bottom Entry  
(Required for bottom entry applications)

**-A**  
= Alignment Pin  
(Not available with -PA option)  
(05, 06, 07, 08, 10, 12, 15, 20, 25, 30, 40 positions only)  
(-DH option and other sizes. Contact Samtec.)

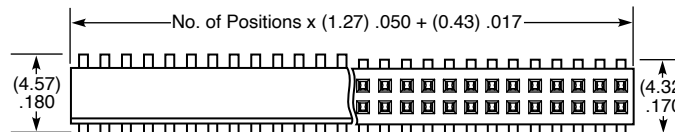
**-K**  
= (4.00 mm) .157" DIA  
Polyimide film Pick & Place Pad

**-P**  
= Pick & Place Pad  
(5 positions min. -D only)  
(Not always necessary for auto placement. See Flex Processing.)

**-PA**  
= Pick & Place Pad with Alignment Pin  
(-D only)  
(Not available with -A option)

**-TR**  
= Tape & Reel

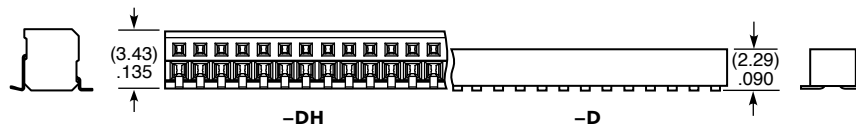
**-FR**  
= Full Reel Tape & Reel  
(must order maximum quantity per reel; contact Samtec for quantity breaks)



### ALSO AVAILABLE

MOQ Required

Single row  
Other platings

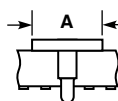


### Notes:

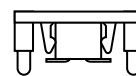
Severe Environment Testing qualified; aligns with MIL-DTL-55302. Visit samtec.com/set

Some lengths, styles and options are non-standard, non-returnable.

PIN/ROW	A
04-15	(3.56) .140
16-50	(7.11) .280



If odd pins/row, alignment pins are on middle position on centerline of the part.  
If even pins/row, then alignment pins are between middle two positions.



-PA OPTION



-P OPTION

## Looking for pricing, stock, or lifecycle information?

Click below to explore more details on WIN SOURCE:

- ⊖ [View CLP-110-02-F-D-K-TR on WIN SOURCE](#)
- ⊖ [Samtec Inc. Information](#)

## Optimize Your Supply Chain with WIN SOURCE Solutions

- ✓ Global Sourcing Solution
- ✓ Obsolete Management
- ✓ Cost Control Management
- ✓ Shortage Management
- ✓ Alternative Solution
- ✓ Excess Inventory Management