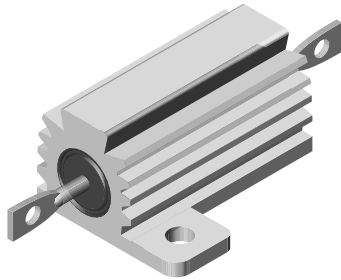




**THE DATASHEET OF
RER65F6190RCSL**



Wirewound Resistors, Military/Established Reliability MIL-PRF-39009 Qualified, Type RER, R Level


FEATURES

- Aluminum heat sink housing
- Molded construction for total environmental protection
- Qualified to MIL-PRF-39009
- Complete welded construction
- Non-inductive styles manufactured with Ayrton-Perry winding for lowest reactive components
- Mounts on chassis to utilize heat-sink effect

STANDARD ELECTRICAL SPECIFICATIONS

| MILITARY MODEL | VISHAY REFERENCE MODEL | POWER RATING $P_{25\text{ }^\circ\text{C}}$ W | RESISTANCE RANGE Ω | TOLERANCE $\pm \%$ | WEIGHT (typical) g |
|----------------|------------------------|---|------------------------------|-----------------------|--------------------------|
| RER40 | ENH05 | 5 | 1 to 1.65K | 1 | 3.3 |
| RER45 | ENH10 | 10 | 1 to 2.8K | 1 | 8.8 |
| RER50 | ENH25 | 20 | 1 to 6.04K | 1 | 16.5 |
| RER55 | ENH50 | 30 | 1 to 4.99K | 1 | 35 |
| RER60 | ERH05 | 5 | 0.10 to 3.32K | 1 | 3 |
| RER65 | ERH10 | 10 | 0.10 to 5.62K | 1 | 6 |
| RER70 | ERH25 | 20 | 0.10 to 12.1K | 1 | 13 |
| RER75 | ERH50 | 30 | 0.10 to 39.2K | 1 | 28 |

TECHNICAL SPECIFICATIONS

| PARAMETER | UNIT | RER40/RER60 | RER45/RER65 | RER50/RER70 | RER55/RER75 |
|--------------------------------|----------|--|-------------|-------------|-------------|
| Free Air Power Rating at 25 °C | W | 3 | 6 | 8 | 10 |
| Temperature Coefficient | ppm/°C | ± 20 for 20 Ω and above; ± 50 for 1 Ω to 19.9 Ω ; ± 100 for 0.1 Ω to 0.99 Ω | | | |
| Maximum Working Voltage | V | $(P \times R)^{1/2}$ | | | |
| Insulation Resistance | Ω | 10 000 M Ω minimum dry, 1000 M Ω minimum after moisture test | | | |
| Solderability | - | Meets requirements of ANSI J-STD-002 | | | |
| Operating Temperature Range | °C | -55 to +250 | | | |

MILITARY PART NUMBER INFORMATION

Military Part Numbering example: RER65F1001RC02

| | | | | | | | | | | | | | |
|---|---|---|---|---|---|---|---|---|---|---|---|---|---|
| R | E | R | 6 | 5 | F | 1 | 0 | 0 | 1 | R | C | 0 | 2 |
|---|---|---|---|---|---|---|---|---|---|---|---|---|---|

MIL TYPE

RER40
RER45
RER50
RER55
RER60
RER65
RER70
RER75

TOLERANCE CODE

F = $\pm 1.0 \%$

RESISTANCE VALUE

3 digit significant figure, followed by a multiplier

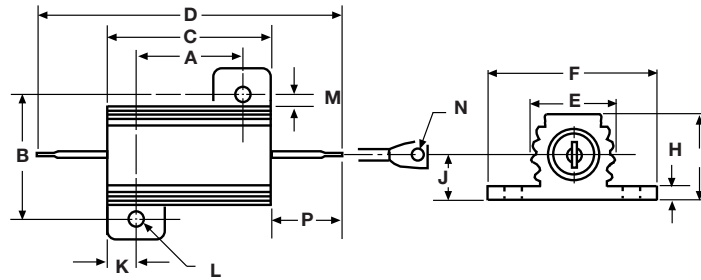
49R9 = 49.9 Ω
1000 = 100 Ω
1001 = 1000 Ω

FAILURE RATE

M = 1.0 %/1000 h
P = 0.1 %/1000 h
R = 0.01 %/1000 h

PACKAGING CODE

C02 = tin/lead, card pack
CSL = tin/lead, card pack, single lot date code

DIMENSIONS


| MILITARY MODEL | DIMENSIONS in inches [millimeters] | | | | | | | | | | | | | |
|----------------|---|---|---|---|---|---|---|--|--|--|--|--|--|---|
| | A | B | C | D | E | F | G | H | J | K | L | M | N | P |
| RER40 RER60 | 0.444 ± 0.005 [11.280 ± 0.127] | 0.490 ± 0.005 [12.450 ± 0.127] | 0.600 ± 0.031 [15.240 ± 0.787] | 1.125 ± 0.062 [28.580 ± 1.570] | 0.334 ± 0.015 [8.480 ± 0.381] | 0.646 ± 0.015 [16.410 ± 0.381] | 0.320 ± 0.015 [8.130 ± 0.381] | 0.065 ± 0.010 [1.650 ± 0.254] | 0.133 ± 0.010 [3.380 ± 0.254] | 0.078 ± 0.010 [1.980 ± 0.254] | 0.093 ± 0.005 [2.360 ± 0.127] | 0.078 ± 0.015 [1.980 ± 0.381] | 0.050 ± 0.005 [1.270 ± 0.127] | 0.266 ± 0.062 [6.760 ± 1.570] |
| RER45 RER65 | 0.562 ± 0.005 [14.270 ± 0.127] | 0.625 ± 0.005 [15.880 ± 0.127] | 0.750 ± 0.031 [19.050 ± 0.787] | 1.375 ± 0.062 [34.930 ± 1.570] | 0.420 ± 0.015 [10.670 ± 0.381] | 0.800 ± 0.015 [20.320 ± 0.381] | 0.390 ± 0.015 [9.910 ± 0.381] | 0.075 ± 0.010 [1.900 ± 0.254] | 0.165 ± 0.010 [4.190 ± 0.254] | 0.093 ± 0.010 [2.360 ± 0.254] | 0.094 ± 0.005 [2.390 ± 0.127] | 0.102 ± 0.015 [2.590 ± 0.381] | 0.085 ± 0.005 [2.160 ± 0.127] | 0.312 ± 0.062 [7.920 ± 1.570] |
| RER50 RER70 | 0.719 ± 0.005 [18.260 ± 0.127] | 0.781 ± 0.005 [19.840 ± 0.127] | 1.062 ± 0.031 [26.970 ± 0.787] | 1.938 ± 0.062 [49.230 ± 1.570] | 0.550 ± 0.015 [13.970 ± 0.381] | 1.080 ± 0.015 [27.430 ± 0.381] | 0.546 ± 0.015 [13.870 ± 0.381] | 0.075 ± 0.010 [1.900 ± 0.254] | 0.231 ± 0.010 [5.870 ± 0.254] | 0.172 ± 0.010 [4.370 ± 0.254] | 0.125 ± 0.005 [3.180 ± 0.127] | 0.115 ± 0.015 [2.920 ± 0.381] | 0.085 ± 0.005 [2.160 ± 0.127] | 0.438 ± 0.062 [11.130 ± 1.570] |
| RER55 RER75 | 1.562 ± 0.005 [39.670 ± 0.127] | 0.844 ± 0.005 [21.440 ± 0.127] | 1.968 ± 0.031 [49.990 ± 0.787] | 2.781 ± 0.062 [70.640 ± 1.570] | 0.630 ± 0.015 [16.000 ± 0.381] | 1.140 ± 0.015 [28.960 ± 0.381] | 0.610 ± 0.015 [15.490 ± 0.381] | 0.088 ± 0.010 [2.240 ± 0.254] | 0.260 ± 0.010 [6.600 ± 0.254] | 0.196 ± 0.010 [4.980 ± 0.254] | 0.125 ± 0.005 [3.180 ± 0.127] | 0.107 ± 0.015 [2.720 ± 0.381] | 0.085 ± 0.005 [2.160 ± 0.127] | 0.438 ± 0.062 [11.130 ± 1.570] |

MATERIAL SPECIFICATIONS

Element: copper-nickel alloy or nickel-chrome alloy, depending on resistance value

Core: ceramic, steatite or alumina, depending on physical size

Encapsulant: silicone molded construction

Housing: aluminum with hard anodic coating

End Caps: stainless steel

Standard Terminals: tinned Copperweld®

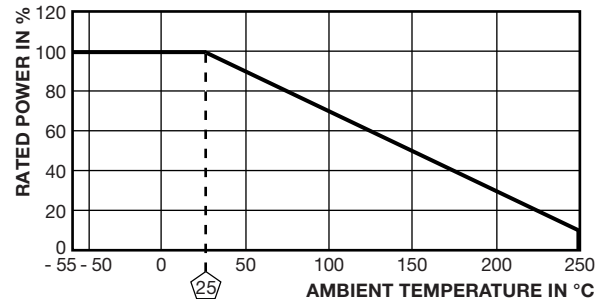
Part Marking: source code, JAN, military PIN, date/lot code

POWER RATING

Vishay RER resistor wattage ratings are based on mounting to the proper heat sink.

RER40, RER45, RER60, RER65: 4" x 6" x 2" x 0.040" thick aluminum chassis

RER50, RER55, RER70, RER75: 5" x 7" x 2" x 0.040" thick aluminum chassis

DERATING


| PERFORMANCE | | |
|---------------------------------|--|-----------------------|
| TEST | CONDITIONS OF TEST | TEST LIMITS |
| Low Temperature Operation | Apply rated power until thermal stability, remove power subject to air temperature of -55 °C for 15 min to 30 min | ± (0.5 % + 0.01 Ω) ΔR |
| Short Time Overload | 5 x rated power for 5 s | ± (0.3 % + 0.01 Ω) ΔR |
| Dielectric Withstanding Voltage | 1000 V _{RMS} (RER40, RER45, RER50, RER60, RER65, RER70), 2000 V _{RMS} (RER55 and RER75), 1 min duration | ± (0.2 % + 0.01 Ω) ΔR |
| Low Temperature Storage | -55 °C for 24 h | ± (0.3 % + 0.01 Ω) ΔR |
| High Temperature Exposure | 250 °C for 2000 h | ± (1.0 % + 0.01 Ω) ΔR |
| Moisture Resistance | MIL-STD-202, method 106 | ± (0.5 % + 0.01 Ω) ΔR |
| Shock, Specified Pulse | MIL-STD-202, method 213, condition I | ± (0.2 % + 0.01 Ω) ΔR |
| Vibration, High Frequency | MIL-STD-202, method 204, condition D | ± (0.2 % + 0.01 Ω) ΔR |
| Load Life | 2000 h at rated power, +25 °C, 1.5 h "ON", 0.5 h "OFF" | ± (1.0 % + 0.01 Ω) ΔR |
| Extended Life | 10 000 h at rated power, +25 °C, 1.5 h "ON", 0.5 h "OFF" | ± (2.0 % + 0.01 Ω) ΔR |
| Terminal Strength | MIL-STD-202, method 211, condition A 5 pound (RER40, RER45, RER60, RER65), 10 pound (RER50, RER55, RER70, RER75) | ± (0.2 % + 0.01 Ω) ΔR |



Disclaimer

ALL PRODUCT, PRODUCT SPECIFICATIONS AND DATA ARE SUBJECT TO CHANGE WITHOUT NOTICE TO IMPROVE RELIABILITY, FUNCTION OR DESIGN OR OTHERWISE.

Vishay Intertechnology, Inc., its affiliates, agents, and employees, and all persons acting on its or their behalf (collectively, "Vishay"), disclaim any and all liability for any errors, inaccuracies or incompleteness contained in any datasheet or in any other disclosure relating to any product.

Vishay makes no warranty, representation or guarantee regarding the suitability of the products for any particular purpose or the continuing production of any product. To the maximum extent permitted by applicable law, Vishay disclaims (i) any and all liability arising out of the application or use of any product, (ii) any and all liability, including without limitation special, consequential or incidental damages, and (iii) any and all implied warranties, including warranties of fitness for particular purpose, non-infringement and merchantability.

Statements regarding the suitability of products for certain types of applications are based on Vishay's knowledge of typical requirements that are often placed on Vishay products in generic applications. Such statements are not binding statements about the suitability of products for a particular application. It is the customer's responsibility to validate that a particular product with the properties described in the product specification is suitable for use in a particular application. Parameters provided in datasheets and / or specifications may vary in different applications and performance may vary over time. All operating parameters, including typical parameters, must be validated for each customer application by the customer's technical experts. Product specifications do not expand or otherwise modify Vishay's terms and conditions of purchase, including but not limited to the warranty expressed therein.

Hyperlinks included in this datasheet may direct users to third-party websites. These links are provided as a convenience and for informational purposes only. Inclusion of these hyperlinks does not constitute an endorsement or an approval by Vishay of any of the products, services or opinions of the corporation, organization or individual associated with the third-party website. Vishay disclaims any and all liability and bears no responsibility for the accuracy, legality or content of the third-party website or for that of subsequent links.

Vishay products are not designed for use in life-saving or life-sustaining applications or any application in which the failure of the Vishay product could result in personal injury or death unless specifically qualified in writing by Vishay. Customers using or selling Vishay products not expressly indicated for use in such applications do so at their own risk. Please contact authorized Vishay personnel to obtain written terms and conditions regarding products designed for such applications.

No license, express or implied, by estoppel or otherwise, to any intellectual property rights is granted by this document or by any conduct of Vishay. Product names and markings noted herein may be trademarks of their respective owners.

Looking for pricing, stock, or lifecycle information?

Click below to explore more details on WIN SOURCE:

 [View RER65F6190RCSL on WIN SOURCE](#)

 [Vishay Information](#)

Optimize Your Supply Chain with WIN SOURCE Solutions

-  Global Sourcing Solution
-  Obsolete Management
-  Cost Control Management
-  Shortage Management
-  Alternative Solution
-  Excess Inventory Management