



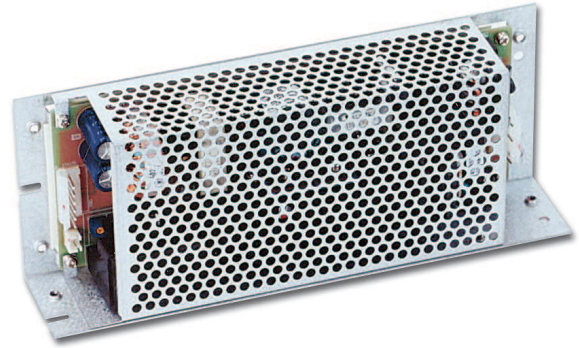
**THE DATASHEET OF
ZWS240PAF-24**



150W to 480W Single Output Power Supplies

Features

- ◆ Universal Input (85 - 265VAC)
- ◆ Power factor Corrected
- ◆ 200% Peak Power capability
- ◆ 2 year warranty
- ◆ Less than 0.5mA earth leakage current
- ◆ Input Transient Protected



Key Market Segments & Applications



Specifications				
Model	ZWS150PAF		ZWS240PAF	
Input Voltage	-	85-265VAC (47-63Hz), 120-370VDC		
Input Current (Forced air (1))	A	2.8/1.4		4.0/2.0
Inrush Current (1,2)	A	14 / 28		
Power Factor	-	0.99 at 100VAC, 0.95 at 200VAC, Meets EN61000-3-2		
Leakage Current	mA	0.5mA Max. Typically 0.1mA (100VAC), 0.22mA (230VAC)		
Temperature Coefficient	-	<0.02%/°C		
Overcurrent Protection (3)	-	>102% of peak current capability		
Overvoltage Protection	V	24V: 30-35V, 36V: 43.2-50.4, 48V: 55.2-64.8V		
Hold Up Time (Typ) at 100VAC	ms	20 (16ms at forced air power ratings)		
Efficiency	%	82		
Remote On/Off	-	See installation manual (Not available with /A cover option)		
Line Regulation	%	0.4%		
Load Regulation	%	0.8%		
Ripple & Noise	%	1%		
Operating Temperature (4)	°C	(Open frame or L bracket) -10°C to +70°C, derate linearly to 70% load from 60°C to 70°C		
Operating Temperature (4)	°C	(With /A cover option) -10°C to +60°C, derate linearly to 70% load from 50°C to 60°C		
Storage Temperature	°C	-30 to +85°C		
Humidity (non condensing)	-	Operating: 30 - 90% RH, Operating: 10 - 95% RH		
Cooling	-	Convection or Forced Air Cooled (1.5m/s)		
Withstand Voltage	-	Input to Ground 2kVAC (20mA), Input to Output 3kVAC (20mA), Output to Ground 500VAC (100mA) for 1 min.		
Isolation Resistance	-	>100M at 25°C & 70% RH, Output to Ground 500VDC		
Vibration (non operating)	-	10 - 55Hz (1 minute sweep), 19.6m/s ² constant X, Y, Z 1 hour		
Shock	-	< 196.1 m/s ²		
Safety Agency Approvals	-	UL60950-1, CSA60950-1, EN60950-1, EN50178, CE Mark		
Conducted & Radiated EMI	-	EN55022/EN55022-B, FCC Class B, VCCI-B		
Recommended EMI Filter	-	RSEL-2006W		
Immunity	-	EN61000-4-2, -3, -4, -5, -6, -8, -11		
Weight (Typ)	g	500g (800g with cover)		750g (1100g with cover)
Size (WxHxD)	mm	See Outline Drawings		
Warranty	yrs	Two Years		

Notes:

- (1) 100/200VAC
- (2) 25°C ambient (cold start)
- (3) Avoid prolonged operation in overload
- (4) With 0.7m/s airflow. See derating table for convection cooling

Looking for pricing, stock, or lifecycle information?

Click below to explore more details on WIN SOURCE:

 [View ZWS240PAF-24 on WIN SOURCE](#)

 [TDK-Lambda Americas Inc. Information](#)

Optimize Your Supply Chain with WIN SOURCE Solutions

-  Global Sourcing Solution
-  Obsolete Management
-  Cost Control Management
-  Shortage Management
-  Alternative Solution
-  Excess Inventory Management