

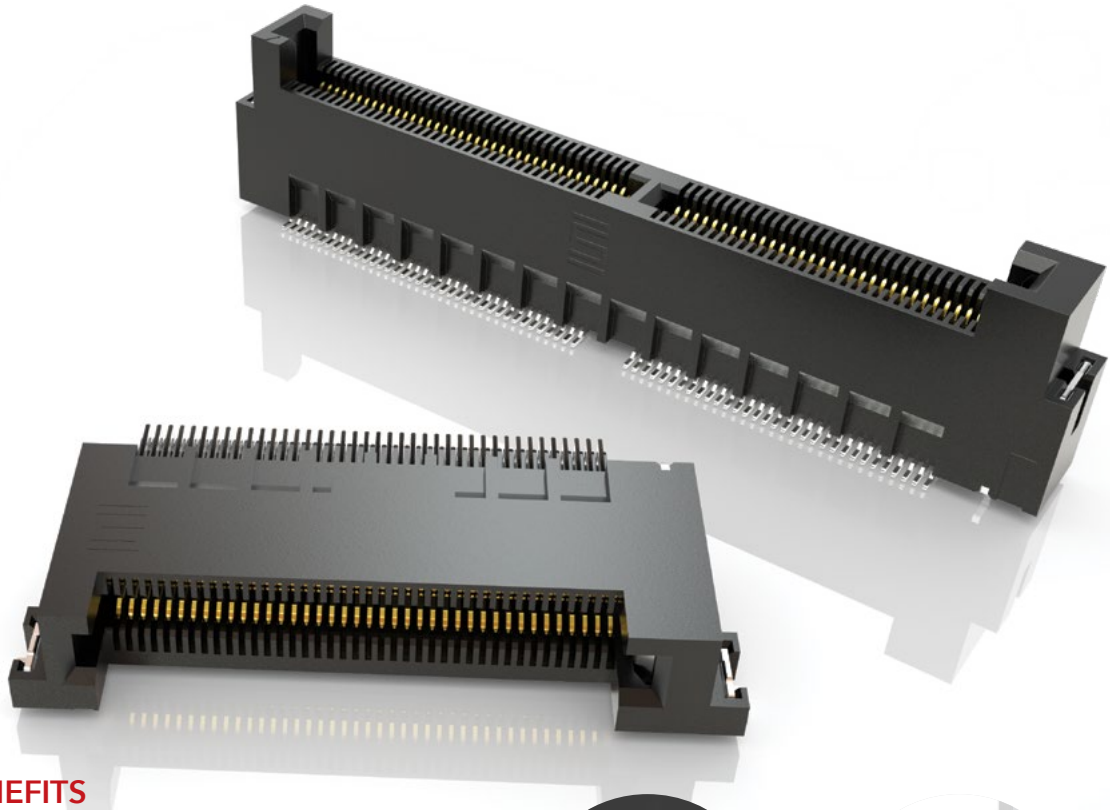


**THE DATASHEET OF  
MEC5-040-01-L-DV-W1-K-TR**



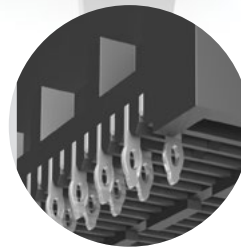
# MICRO EDGE CARD SYSTEMS

0.50 mm, 0.635 mm, 0.80 mm, 1.00 mm, 1.27 mm, 2.00 mm PITCH

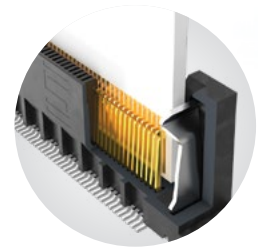


## FEATURES & BENEFITS

- Up to 56 Gbps PAM4
- PCI Express® 4.0 (MEC5 Series)
- Solutions for (1.60 mm) .062" and (2.36 mm) .093" thick cards
- Choice of pitch: 0.50 mm, 0.635 mm, 0.80 mm, 1.00 mm, 1.27 mm, 2.00 mm
- Vertical, right-angle and edge mount orientations
- Available in surface mount and through-hole



Staggered press-fit tails  
(MEC8-VP)



Justification beam ensures  
card and body are flush  
(MEC5)

## KEY SPECIFICATIONS

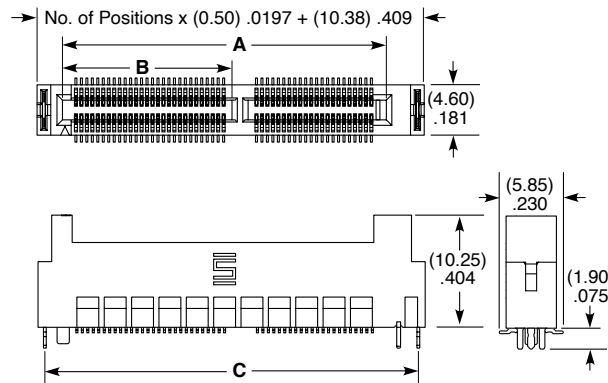
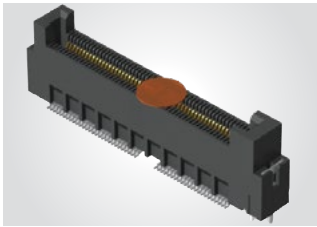
| SERIES | PITCH    | TOTAL POSITIONS | INSULATOR MATERIAL | CONTACT MATERIAL | OPERATING TEMP RANGE | CURRENT RATING | VOLTAGE RATING | LEAD-FREE SOLDERABLE |
|--------|----------|-----------------|--------------------|------------------|----------------------|----------------|----------------|----------------------|
| MEC5   | 0.50 mm  | 60-200          | Black LCP          | Phosphor Bronze  | -55 °C to +125 °C    | 1.5 A (2 pins) | 125 VAC        | Yes                  |
| MEC6   | 0.635 mm | 20-140          | Black LCP          | Phosphor Bronze  | -55 °C to +125 °C    | 2.4 A (2 pins) | 185 VAC        | Yes                  |
| MEC8   | 0.80 mm  | 20-140          | Black LCP          | Phosphor Bronze  | -55 °C to +125 °C    | 2.3 A (2 pins) | 180 VAC        | Yes                  |
| MEC1   | 1.00 mm  | 20-140          | Black LCP          | Phosphor Bronze  | -55 °C to +125 °C    | 2.2 A (2 pins) | 250 VAC        | Yes                  |
| MECF   | 1.27 mm  | 10-100          | Black/Natural LCP  | BeCu             | -55 °C to +125 °C    | 3.5 A (2 pins) | 280 VAC        | Yes                  |
| MEC2   | 2.00 mm  | 10-100          | Black/Natural LCP  | BeCu             | -55 °C to +125 °C    | 3.5 A (2 pins) | 235 VAC        | Yes                  |

(0.50 mm) .0197" PITCH • MICRO EDGE CARD SOCKET

| MEC5 | POSITIONS PER ROW  | 01 | PLATING OPTION  | TAIL OPTION                               | WELD TAB OPTION   | OTHER OPTION  | "X"R   |
|------|--|----|---|---|---|---|--|
|      | -030, -040, -050,<br>-060, -070, -080<br>(-RA & -DV)<br><br>-090, -100<br>(-DV only) |    | -L<br>=10 μ" (0.25 μm)<br>Gold on contact,<br>Matte Tin on tail | -DV<br>Vertical<br><br>-RA<br>Right-angle | -W1<br>= Weld Tab<br>Through-hole<br>(Required for<br>-DV option)<br><br>-W2<br>= Weld Tab<br>Surface Mount<br>(Not available<br>for -DV) | -K<br>= Polyimide Pick<br>& Place Pad<br>(Required<br>for -DV)<br>(Not available<br>in -RA) | -TR<br>= Tape & Reel<br><br>-FR<br>= Full Reel<br>Tape & Reel<br>(must order max.<br>quantity per reel;<br>contact Samtec<br>for quantity<br>breaks) |

**MEC5-DV**

**Card Mates:**  
(1.60 mm) .062"  
thick card with  
standard board  
tolerance



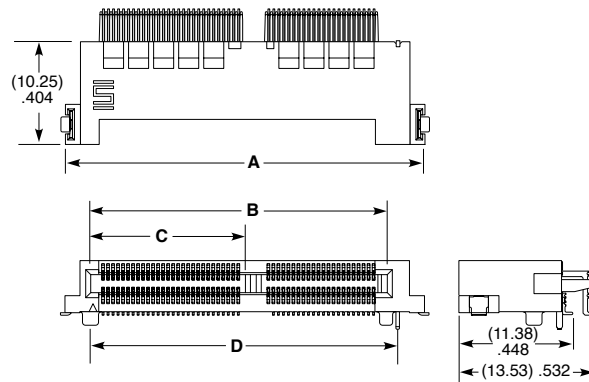
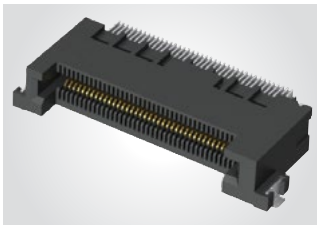
| POSITIONS PER ROW | A                | B                | C                |
|-------------------|------------------|------------------|------------------|
| -030              | (17.10)<br>.673  | N/A              | (21.63)<br>.852  |
| -040              | (22.10)<br>.870  | N/A              | (26.63)<br>1.048 |
| -050              | (29.60)<br>1.165 | (15.48)<br>.609  | (34.13)<br>1.344 |
| -060              | (34.60)<br>1.362 | (17.98)<br>.708  | (39.13)<br>1.541 |
| -070              | (39.60)<br>1.559 | (20.48)<br>.806  | (44.13)<br>1.737 |
| -080              | (44.60)<br>1.756 | (22.98)<br>.905  | (49.13)<br>1.934 |
| -090              | (49.60)<br>1.953 | (25.48)<br>1.003 | (54.13)<br>2.131 |
| -100              | (54.60)<br>2.150 | (27.98)<br>1.102 | (59.13)<br>2.328 |

**Note:** Polarization rib is not present on -030 & -040 positions

View complete specifications at: [samtec.com?MEC5-DV](http://samtec.com?MEC5-DV)

**MEC5-RA**

**Card Mates:**  
(1.60 mm) .062"  
thick card with  
standard board  
tolerance



| POSITIONS PER ROW | A                | B                | C               | D                |
|-------------------|------------------|------------------|-----------------|------------------|
| -30               | (23.38)<br>.920  | (17.10)<br>.673  | N/A             | (18.16)<br>.715  |
| -40               | (28.38)<br>1.117 | (22.10)<br>.870  | N/A             | (23.16)<br>.912  |
| -50               | (35.88)<br>1.413 | (29.60)<br>1.165 | (15.44)<br>.608 | (30.66)<br>1.207 |
| -60               | (40.88)<br>1.609 | (34.60)<br>1.362 | (17.94)<br>.706 | (35.66)<br>1.404 |
| -70               | (45.88)<br>1.806 | (39.60)<br>1.559 | (20.44)<br>.805 | (40.66)<br>1.601 |
| -80               | (50.88)<br>2.003 | (44.60)<br>1.756 | (22.94)<br>.903 | (45.66)<br>1.798 |



**Note:** Polarization rib is not present on -030 & -040 positions

View complete specifications at: [samtec.com?MEC5-RA](http://samtec.com?MEC5-RA)

**Note:**  
Some sizes, styles and  
options are non-standard,  
non-returnable.

## Looking for pricing, stock, or lifecycle information?

Click below to explore more details on WIN SOURCE:

-  [View MEC5-040-01-L-DV-W1-K-TR on WIN SOURCE](#)
-  [Samtec Inc. Information](#)

## Optimize Your Supply Chain with WIN SOURCE Solutions

-  Global Sourcing Solution
-  Obsolete Management
-  Cost Control Management
-  Shortage Management
-  Alternative Solution
-  Excess Inventory Management