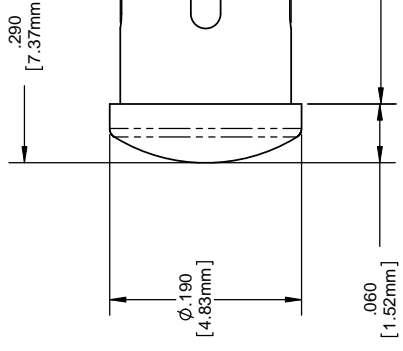
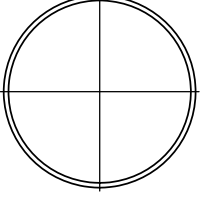
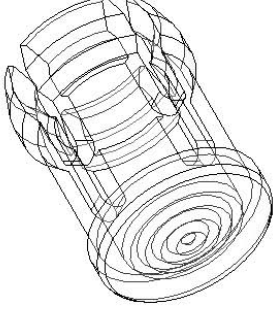




**THE DATASHEET OF
SMB_200_BTP**



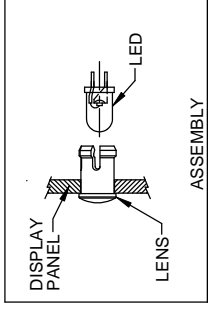
- NOTES:
1. MOUNTING: Mounts in a $\phi .171 \pm .002$ [$\phi 4.34\text{mm} \pm .05$] panel hole on .250 [6.35mm] centers. Panel thickness .063 [1.6mm] to .125 [3.17mm]. Panel hole should be deburred, but not chamfered.
 2. ASSEMBLY: Insert lens through panel hole, and insert LED into lens.
 3. MATERIAL: Polycarbonate, UL 94-V2
 4. GLO Series: Polycarbonate & Acrylic blend
U.S. & Foreign Pat. Issued & Pend.



ORDERING CODE : **SMB 200 XXX**

MODEL

LENS COLOR	
RTP	RED TRANSPARENT
ATP	AMBER TRANSPARENT
GTP	GREEN TRANSPARENT
BTP	BLUE TRANSPARENT
YTP	YELLOW TRANSPARENT
CTP	CLEAR TRANSPARENT
GLO	WHITE TRANSLUCENT



UNLESS OTHERWISE SPECIFIED: DIMENSIONS FINISH	DECIMALS .X ± .010 .XX ± .005 .XXX ± .005
TOLERANCES UNLESS OTHERWISE SPECIFIED: FRACTIONS DECIMALS FINISH	
SEE NOTES	
MATERIAL	POLYCARBONATE UL 94-V2
APPROVAL	SVU/J
DRAWN	
CHECKED	
DO NOT SCALE DRAWING	

ECN#	REV.	DESC.
	1	ADD G
	001	REVISED PER

Looking for pricing, stock, or lifecycle information?

Click below to explore more details on WIN SOURCE:

- ⊖ [View SMB_200_BTP](#) on WIN SOURCE
- ⊖ [Visual Communications Company - VCC](#) Information

Optimize Your Supply Chain with WIN SOURCE Solutions

- ✓ Global Sourcing Solution
- ✓ Obsolete Management
- ✓ Cost Control Management
- ✓ Shortage Management
- ✓ Alternative Solution
- ✓ Excess Inventory Management