



**THE DATASHEET OF
PL130-58SC**

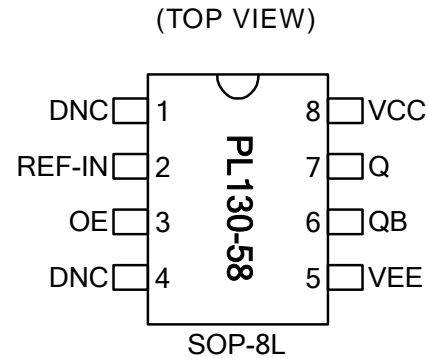


High Speed Translator Buffer to PECL

FEATURES

- Input clock frequency ≤ 266 MHz
- JEDEC standard Differential LVPECL output
- 70mA typical power supply current
- 300ps Max. Rise/Fall time
- 740ps input propagation delay
- LVC MOS and LV TTL Input compatible
- Single 2.5V $\pm 5\%$ or 3.3V $\pm 10\%$ power supply with $V_{EE}=0V$
- Available in 8 pin SOP Green/RoHS compliant Package

PIN CONFIGURATION

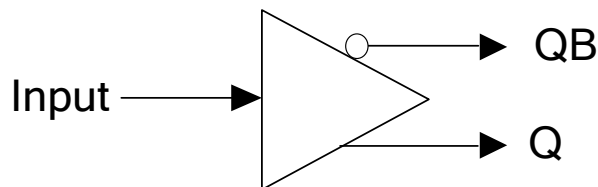


DESCRIPTION

The PL130-58 is a low cost, high performance, high speed, translator buffer that produces a pair of differential LVPECL outputs from CMOS input. Outputs are JEDEC standard LVPECL signals.

The device is targeted for Backplane buffering, data distribution, Fibre Channel and many other applications.

BLOCK DIAGRAM



High Speed Translator Buffer to PECL
PIN DESCRIPTIONS

Name	SOP-8L	Type	Description
DNC	1, 4	-	Do Not Connect
REF-IN	2	Input	Reference input signal. The frequency of this signal will be reproduced at the output (after translation to PECL level).
OE	3	Input	Output enable ('1' for enable). Internal pull-up (default is '1').
VEE	5	Power	Power Ground.
QB	6	Output	PECL Complementary output.
Q	7	Output	PECL True output.
VCC	8	Power	Positive Power Supply.

ELECTRICAL SPECIFICATIONS
1. Absolute Maximum Ratings

PARAMETERS	SYMBOL	MIN.	MAX.	UNITS
Supply Voltage	V_{DD}		4.6	V
Input Voltage, dc	V_I	-0.5	$V_{DD}+0.5$	V
Output Voltage, dc	V_O	-0.5	$V_{DD}+0.5$	V
Storage Temperature	T_S	-65	150	°C
Ambient Operating Temperature*	T_A	-40	85	°C
Junction Temperature	T_J		110	°C
Lead Temperature (soldering, 10s)			260	°C

Exposure of the device under conditions beyond the limits specified by Maximum Ratings for extended periods may cause permanent damage to the device and affect product reliability. These conditions represent a stress rating only, and functional operations of the device at these or any other conditions above the operational limits noted in this specification is not implied.

* Note: Operating Temperature is guaranteed by design for all parts (COMMERCIAL and INDUSTRIAL), but tested for COMMERCIAL grade only.

2. AC Specifications

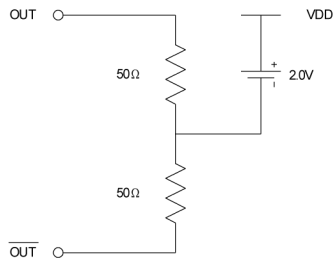
PARAMETERS	CONDITIONS	MIN.	TYP.	MAX.	UNITS
Input Frequency				266	MHz
Output Frequency				266	MHz

High Speed Translator Buffer to PECL

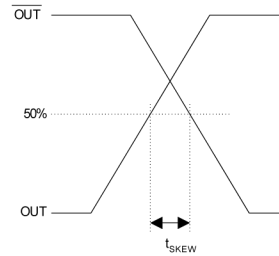
6. PECL Switching Characteristics

PARAMETERS	SYMBOL	CONDITIONS	MIN.	TYP.	MAX.	UNITS
Clock Rise Time	t_r	@20/80% of output waveform			300	ps
Clock Fall Time	t_f	@80/20% of output waveform			300	ps

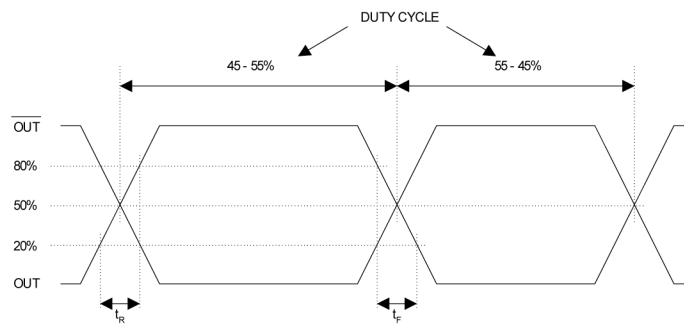
PECL Levels Test Circuit



PECL Output Skew



PECL Transition Time Waveform

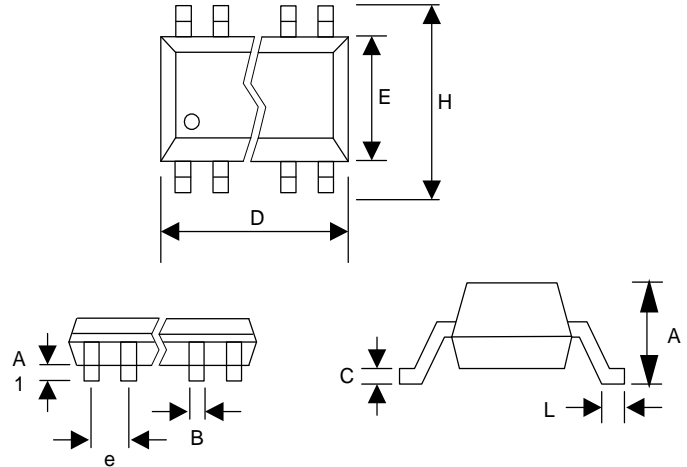


High Speed Translator Buffer to PECL

PACKAGE INFORMATION (GREEN PACKAGE COMPLIANT)

8 PIN (dimensions in mm)

SOP-8L		
Symbol	Min.	Max.
A	1.47	1.73
A1	0.10	0.25
B	0.33	0.51
C	0.19	0.25
D	4.80	4.95
E	3.80	4.00
H	5.80	6.20
L	0.38	1.27
e	1.27 BSC	



ORDERING INFORMATION

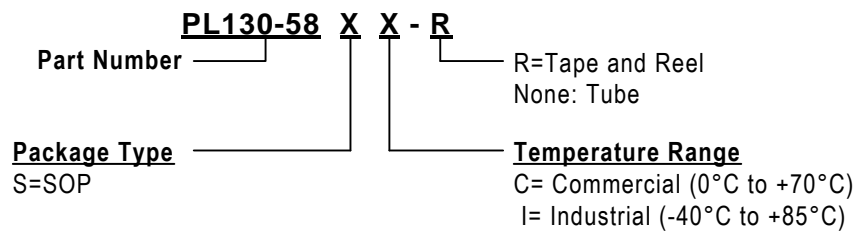
For part ordering, please contact our Sales Department:

2180 Fortune Drive, San Jose, CA 95131, USA

Tel: (408) 944-0800 Fax: (408) 474-1000

PART NUMBER

The order number for this device is a combination of the following:
Part number, Package type and Operating temperature range



Order Number	Marking	Package Option
PL130-58SC-R	P130-58	SOP-8L - Tape and Reel
PL130-58SC	SC LLLLL	SOP-8L - Tube



*Note: LLLLL designates lot number

Micrel Inc., reserves the right to make changes in its products or specifications, or both at any time without notice. The information furnished by Micrel is believed to be accurate and reliable. However, Micrel makes no guarantee or warranty concerning the accuracy of said information and shall not be responsible for any loss or damage of whatever nature resulting from the use of, or reliance upon this product.

LIFE SUPPORT POLICY: Micrel's products are not authorized for use as critical components in life support devices or systems without the express written approval of the President of Micrel Inc.

Looking for pricing, stock, or lifecycle information?

Click below to explore more details on WIN SOURCE:

-  [View PL130-58SC on WIN SOURCE](#)
-  [Microchip Technology](#) Information

Optimize Your Supply Chain with WIN SOURCE Solutions

-  Global Sourcing Solution
-  Obsolete Management
-  Cost Control Management
-  Shortage Management
-  Alternative Solution
-  Excess Inventory Management