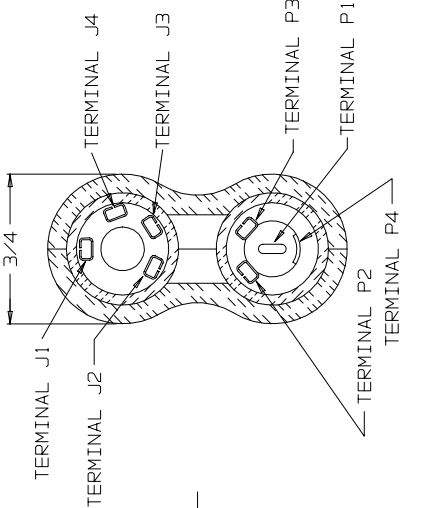
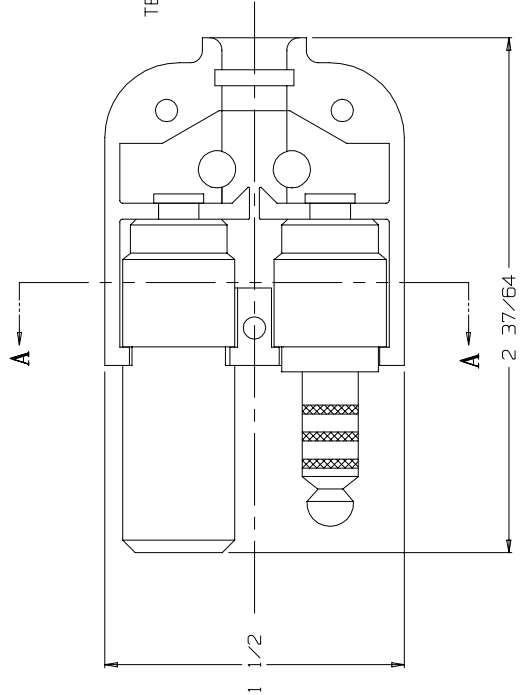




THE DATASHEET OF TP-108

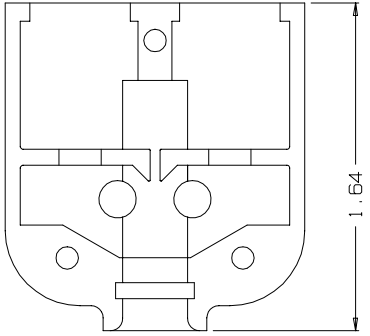


C TP-108

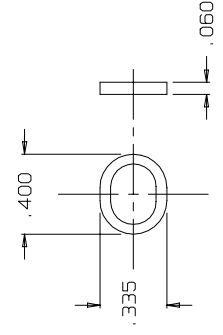


SECTION A-A

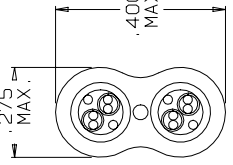
VIEW WITH HALF SHELL REMOVED



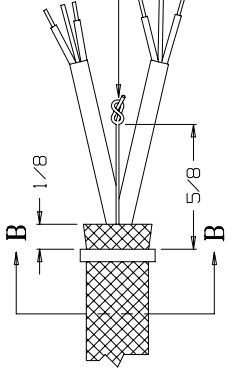
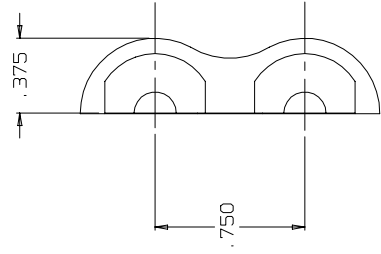
SHELL, HALF
TP-108-2
(2 REQ'D)



RING, STRAIN RELIEF
TJ-106-10A
(1 REQ'D)

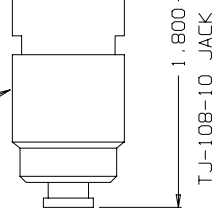


SECTION B-B
STRAIN RELIEF
CLAMP TJ-106-10A
AFTER CRIMPING
SCALE: 4:1

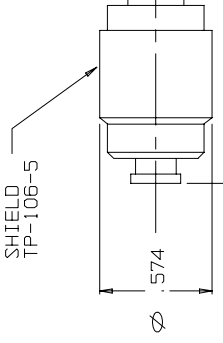


STAY CORD-VARNISH KNOT

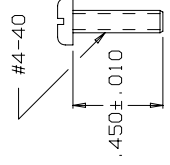
SHIELD
TP-106-5



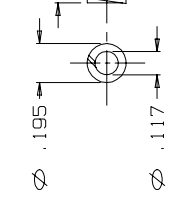
TJ-108-10 JACK &



TP-108-6 PLUG &



SCREW
TJ-106-12
(3 REQ'D)



WASHER
TJ-106-13
(3 REQ'D)

F1 N 1

2

OWN BY	IDH	DATE	MATERIAL
CHECKED BY	L. SMITH	DATE 10/11/96	FINISH
APPR. BY		DATE	WEIGHT
UNLESS OTHERWISE SPECIFIED DIMENSIONS ARE IN INCHES FRACTIONS IN DECIMALS			TITLE
ANGLES			PLUG SHIELD
TOLERANCES			DO NOT SCALE

C	REVISION	EN #	DATE	CHK.	ENT
B	395 WAS 400 J1, J2 & P1, P2	283	12/4/97		
A	395 WAS 400 J1, J2 & P1, P2	197	10/11/96	LS	
LET.	REVISION	EN #	DATE	CHK.	ENT
		476	2/24/04		

Looking for pricing, stock, or lifecycle information?

Click below to explore more details on WIN SOURCE:

- ⊖ [View TP-108 on WIN SOURCE](#)
- ⊖ [Amphenol Information](#)

Optimize Your Supply Chain with WIN SOURCE Solutions

- ✓ Global Sourcing Solution
- ✓ Obsolete Management
- ✓ Cost Control Management
- ✓ Shortage Management
- ✓ Alternative Solution
- ✓ Excess Inventory Management