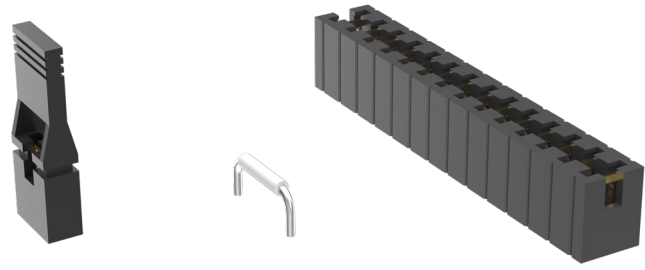




**THE DATASHEET OF
SNT-100-BL-T**



SHUNTS & JUMPERS



(2.54 mm) .100" PITCH • SNT/MNT/2SN/SNM/PK/JL SERIES

SNT/MNT

Mates:
TSW, HTSW, MTSW,
HMTSW, TLW, DW, EW,
ZW, HW, TSM, BST, PHT

2SN

Mates:
TMMH, TMM,
MTMM, MMT, TW,
LTMM, ZLTMM, TSH, EHT

SNM

Mates:
TMS, MTMS, DWM

SPECIFICATIONS

SNT

Insulator Material:
Glass Filled Polyester
Contact Material:
Phosphor Bronze
Current Rating (SNT/TSW):
4.3 A per pin
(1 pin powered per row)
Operating Temp Range:
-55 °C to +125 °C (Gold)
-55 °C to +105 °C (Tin)
Insertion Depth:
(4.32 mm) .170" minimum
Lead Size accepted:
(0.64 mm) .025" SQ

MNT

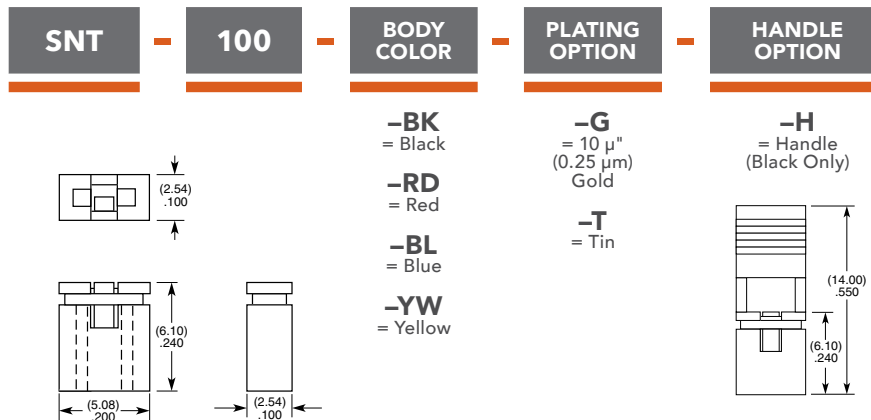
Same as SNT except:
Current Rating (MNT/TSM):
3.9 A per pin
(1 pin powered per row)
Working Voltage:
450 VAC

2SN

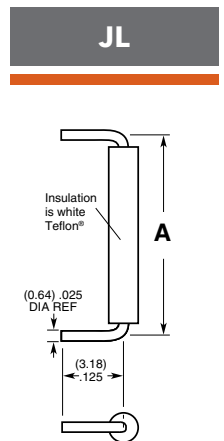
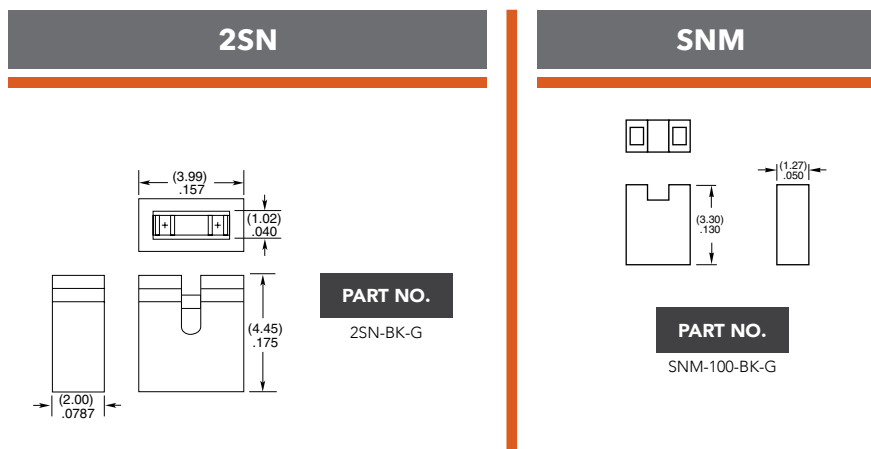
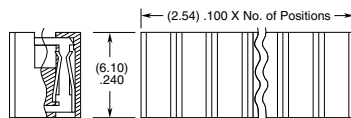
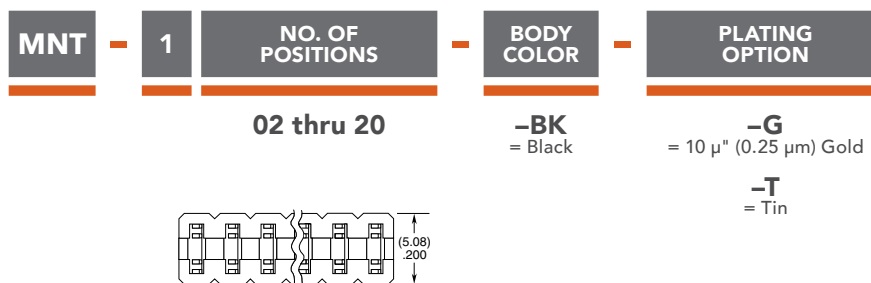
Same as SNT except:
Insertion Depth:
(2.29 mm) .090" minimum
Lead Size accepted:
(0.51 mm) .020" SQ

SNM

Same as SNT except:
Insertion Depth:
(3.43 mm) .135" minimum
Max Processing Temp:
Not recommended for IR/VP



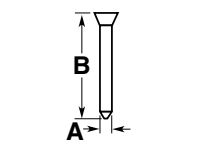
Note:
Other Gold plating options available.



PART NO.	A
JL-100-25-T	(2.54) .100
JL-250-25-T	(6.35) .250
JL-400-25-T	(10.16) .400

Note:
For complete specifications see www.samtec.com?JL

PK





PART NO.	A	B
PK-01-06	(0.64) .025 SQ	(5.84) .230
PK-01-07	(0.51) .020 SQ	(3.18) .125

Insulator Material:
Natural Thermoplastic

Note:
Order per wheel.
6 pins per wheel.

Looking for pricing, stock, or lifecycle information?

Click below to explore more details on WIN SOURCE:

-  [View SNT-100-BL-T on WIN SOURCE](#)
-  [Samtec Inc. Information](#)

Optimize Your Supply Chain with WIN SOURCE Solutions

-  Global Sourcing Solution
-  Obsolete Management
-  Cost Control Management
-  Shortage Management
-  Alternative Solution
-  Excess Inventory Management