

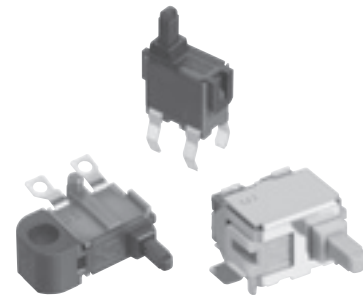


THE DATASHEET OF ESE-11MV5T



5N Detector Switches

Type: ESE11



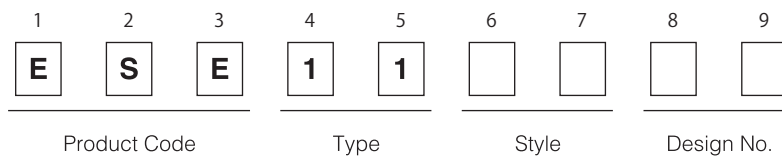
■ Features

- Wide range of customizable features including operational directions
- Light operating force
- Wide available range for reflow soldering

■ Recommended Applications

- Detection of media in portable electronic equipment

■ Explanation of Part Numbers



■ Specifications

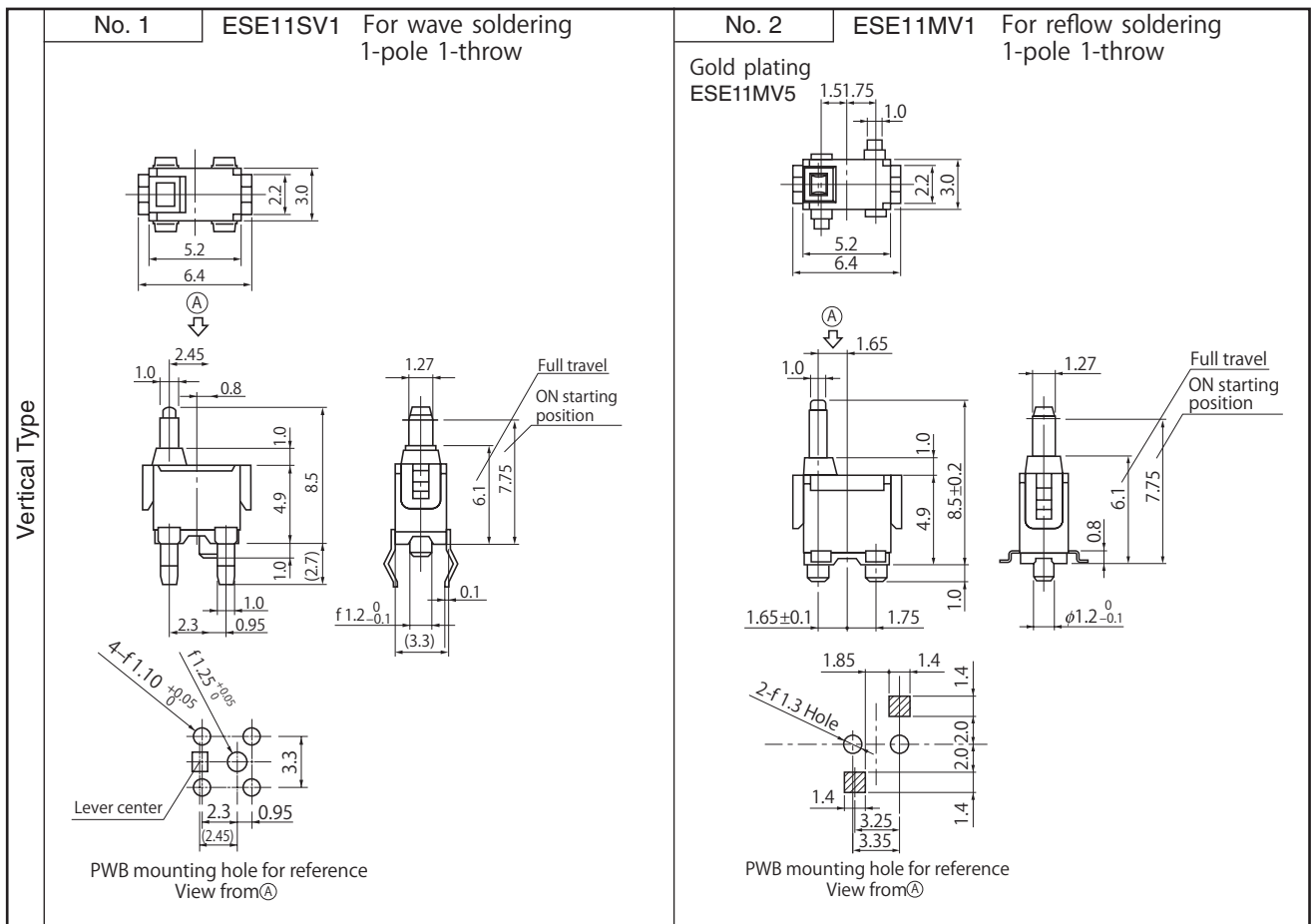
Rating	50 μ A 3 Vdc to 10 mA 5 Vdc (Resistive load)
Contact Resistance	500 m Ω max. (Initial)
Insulation Resistance	100 M Ω min. (100 Vdc)
Dielectric Withstanding Voltage	100 Vac for 1 minute
Operating Force	350 mN max. (Full Travel)
Mounting Height	<ul style="list-style-type: none"> · Type SV 4.9 mm · Type MV 4.9 mm (MV2, 7 : 5.4 mm) · Type SH 5.25 mm · Type MH 4.25 mm · Type HS, SF 3.6 mm
Poles and Throws	1-pole 1-throw
Full Travel (Pushing distance)	<ul style="list-style-type: none"> · Type SV 6.1 mm (2.4 mm) · Type MV 6.1 mm (2.4 mm) · Type SH 3.0 mm (2.4 mm) · Type MH 1.7 mm (2.4 mm) · Type HS, SF 6.3 mm (2.4 mm)
Operating Life	50000 cycles min.
Temperature Range	-10 °C to +70 °C
Heat Resistance	+80 °C for 96 hours
Low Temperature Resistance	-25 °C for 96 hours
Humidity Resistance	+40 °C 90 % to 95 % RH for 96 hours

Design and specifications are each subject to change without notice. Ask factory for the current technical specifications before purchase and/or use. Should a safety concern arise regarding this product, please be sure to contact us immediately.

00 Oct. 2012

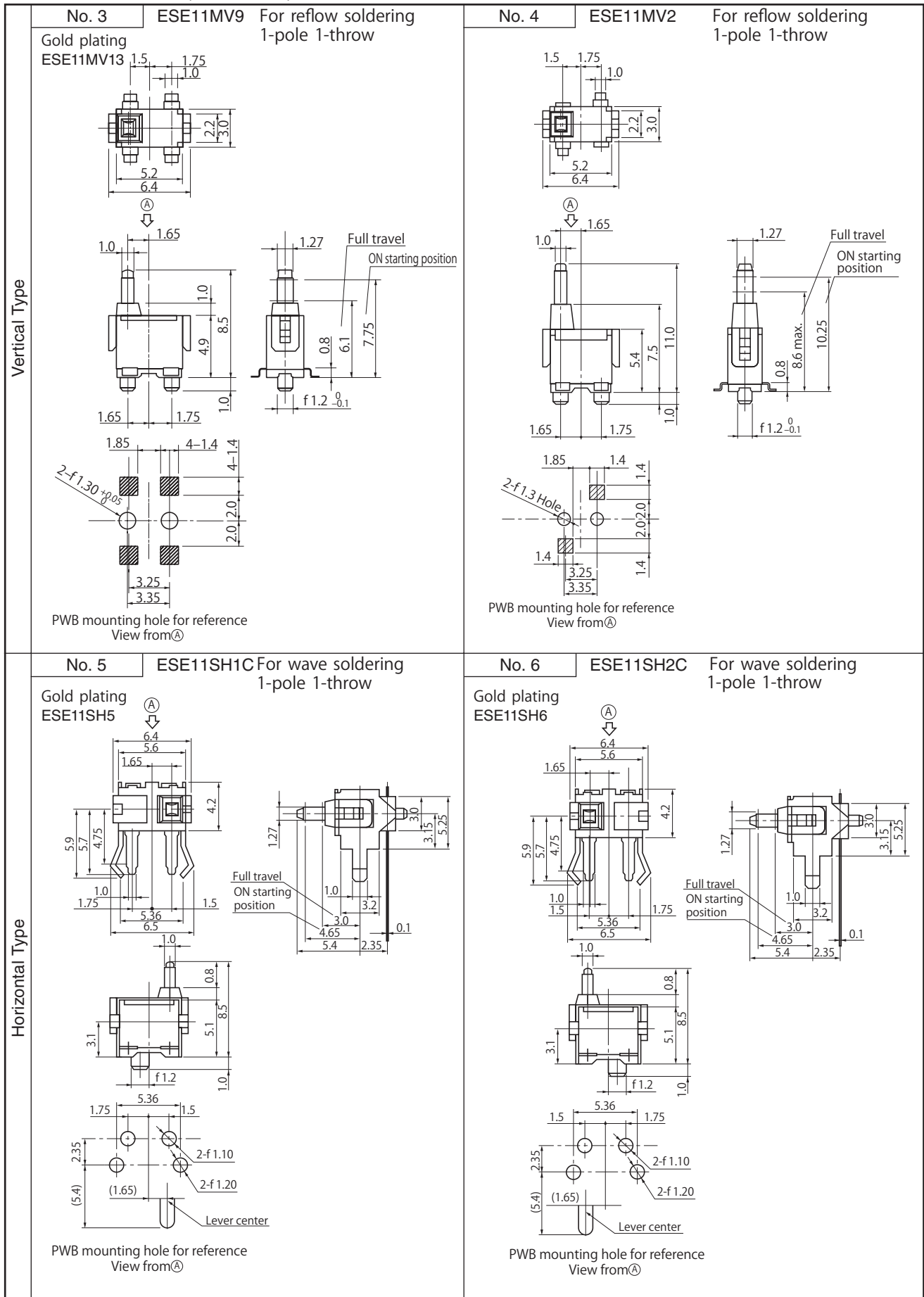
Minimum Quantity/Packing Unit	ESE11SV □ ESE11MV □ ESE11SH □ ESE11MH □ ESE11HS □ ESE11SF □	200 pcs. Polyethylene Bag (Bulk)
	ESE11MV □T (Excluding : ESE11MV2)	800 pcs. Embossed Taping (Reel Pack)
	ESE11MH □T	1500 pcs. Embossed Taping (Reel Pack)
Quantity/ Carton	ESE11SV □ ESE11MV □ ESE11SH □ ESE11MH □ ESE11HS □ ESE11SF □	10000 pcs. Polyethylene Bag (Bulk)
	ESE11MV2	8000 pcs. Polyethylene Bag (Bulk)
	ESE11MV □T (Excluding : ESE11MV2)	4800 pcs. Embossed Taping (Reel Pack)
	ESE11MH □T	9000 pcs. Embossed Taping (Reel Pack)

■ Dimensions in mm (not to scale)



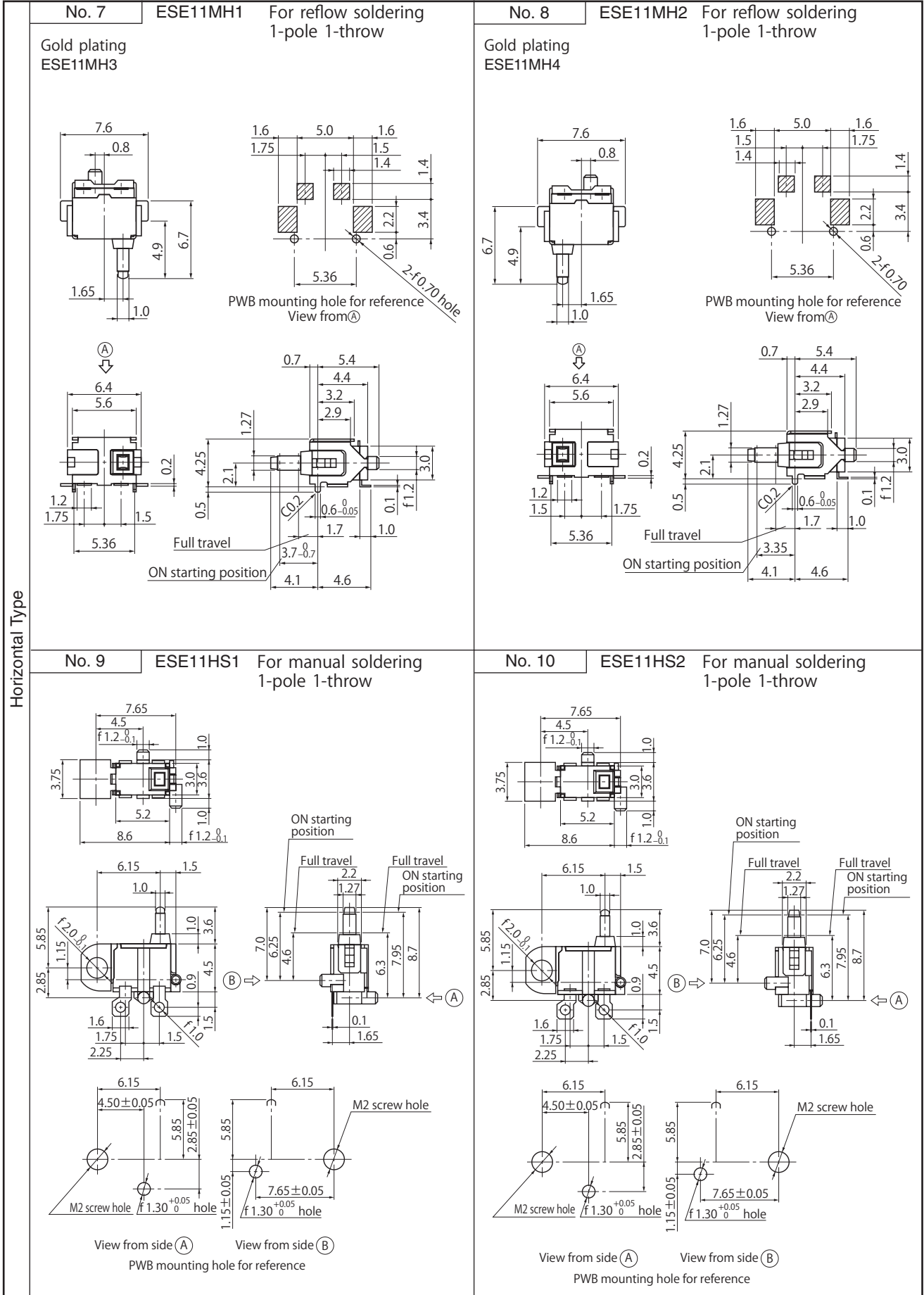
Design and specifications are each subject to change without notice. Ask factory for the current technical specifications before purchase and/or use. Should a safety concern arise regarding this product, please be sure to contact us immediately.

■ Dimensions in mm (not to scale)



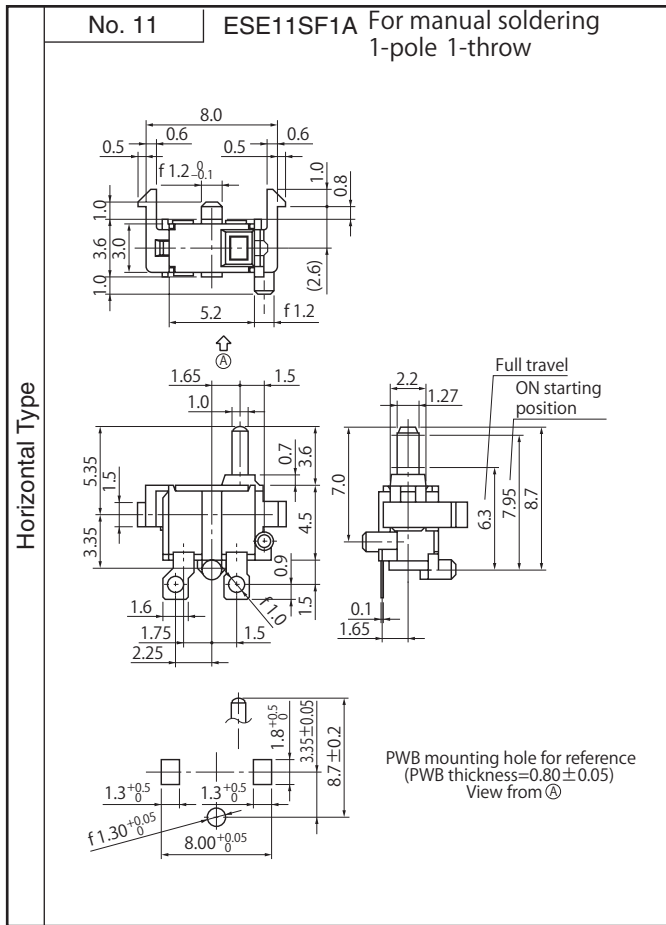
Design and specifications are each subject to change without notice. Ask factory for the current technical specifications before purchase and/or use. Should a safety concern arise regarding this product, please be sure to contact us immediately.

■ Dimensions in mm (not to scale)

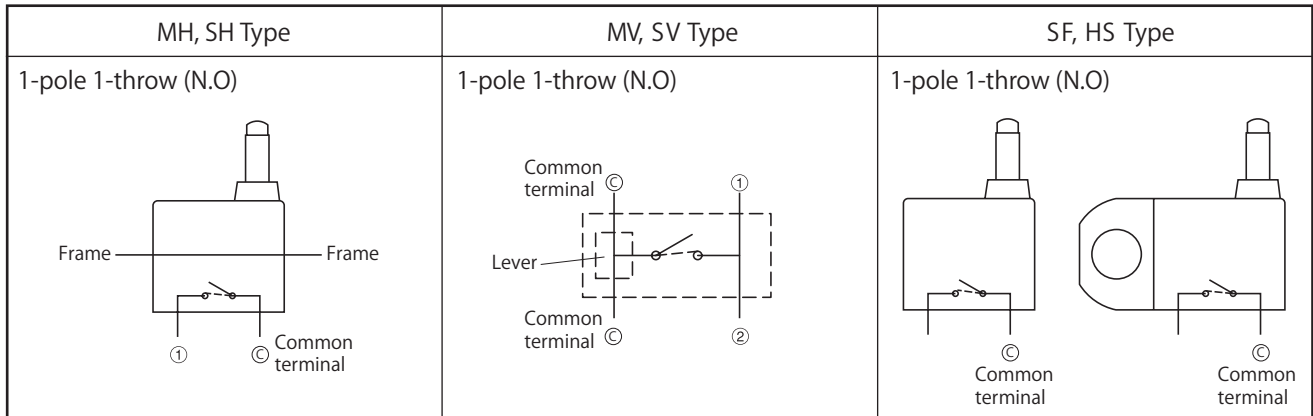


Design and specifications are each subject to change without notice. Ask factory for the current technical specifications before purchase and/or use. Should a safety concern arise regarding this product, please be sure to contact us immediately.

■ Dimensions in mm (not to scale)

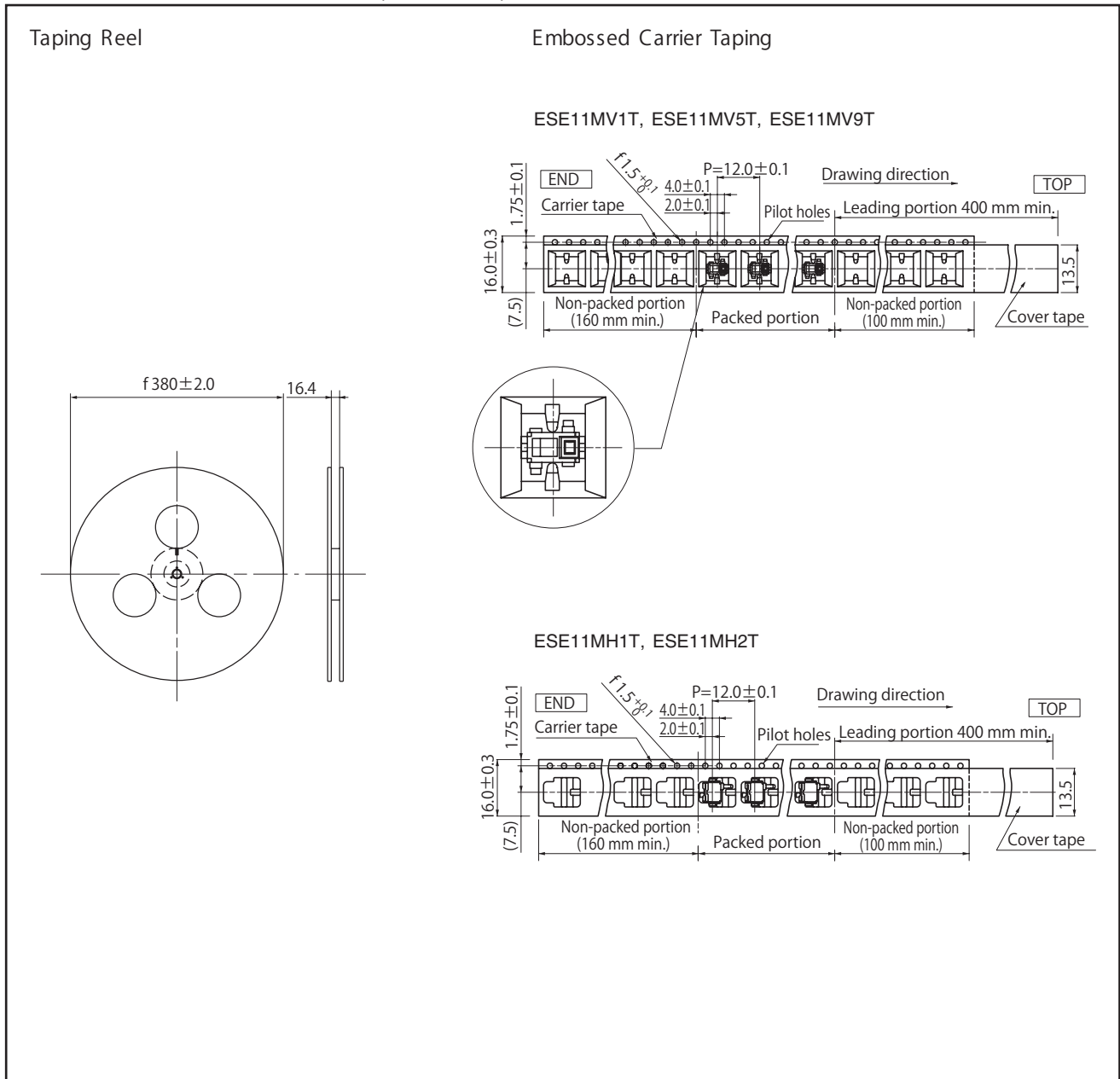


■ Circuit Diagram



■ Packaging Specifications



Standard Reel Dimensions in mm (not to scale)



Design and specifications are each subject to change without notice. Ask factory for the current technical specifications before purchase and/or use. Should a safety concern arise regarding this product, please be sure to contact us immediately.

Looking for pricing, stock, or lifecycle information?

Click below to explore more details on WIN SOURCE:

-  [View ESE-11MV5T on WIN SOURCE](#)
-  [Panasonic Information](#)

Optimize Your Supply Chain with WIN SOURCE Solutions

-  Global Sourcing Solution
-  Obsolete Management
-  Cost Control Management
-  Shortage Management
-  Alternative Solution
-  Excess Inventory Management