



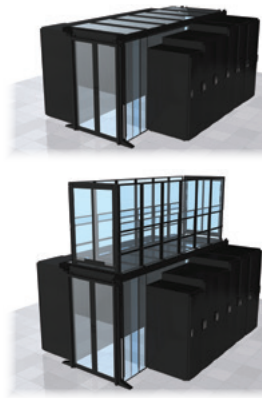
**THE DATASHEET OF
CUWBSS07ST01B1**



Net-Contain™ Universal Aisle Containment System

specifications

The universal aisle containment system shall be configurable to roof containment (typically used for Cold Aisle Containment) and vertical wall containment (typically used for Hot Aisle Containment). The system shall be compatible with all major cabinet brands and sizes. This system shall be a floor mounted free structure. The system shall be comprised of wall beams, end-of-row frames, dual sliding doors, and ceiling structures for roof containment or wall structures for wall containment. The system is independent of the cabinets; hence cabinets can be rolled-in/out easily. System height shall be adjustable from 42 RU to 52 RU with expandable containment length. Tool-less blanking panels shall be used to seal the area above shorter cabinets. Unoccupied cabinet space shall be sealed with full height blanking panels. The system shall be deployed on raised or slab floors. The system shall be capable of being added without disrupting existing in-cabinet equipment. This system shall match both current and future data center infrastructure.



product offering

The universal aisle containment approach allows you to go back and reclaim stranded capacity, restore energy efficiency, and reduce or defer CapEx by retrofitting your existing data center with an innovative offering of services, containment system, and environmental monitoring.

The Net-Contain™ Universal Aisle Containment (UAC) System will be able to retro-fit in a Brownfield (existing Data Center) or Greenfield (new Data Center) application that uses Panduit or non-Panduit cabinets. Offering includes roof containment (Cold Aisle Containment) and vertical wall containment (Hot Aisle Containment).

key features and benefits

Floor mounted, free structure	Can be deployed in new (Greenfield) or existing (Brownfield) data center applications; cabinets can be rolled in/out of position in the aisle without disturbing the structure
Height adjustable frame	Cabinets from 42 RU to 52 RU for added flexibility
Hot Aisle or Cold Aisle	Configurable to roof containment and vertical wall containment
Compatible with any brand of cabinets	Cabinets (server, switch, or storage) from differing manufacturers with differing heights, widths, and depths can be contained
Full or partial pod	Able to deploy containment if fully populated or partial/non-populated row
Raised or slab floor	Allows deployment in any type of data center
Expandable pod length	Frame support is configurable to accommodate different containment lengths; one containment system to match both your current and future containment infrastructure
Tool-less full or top of cabinet blanking panels	To seal unoccupied cabinet space in the containment To seal top of cabinet gap between frame and cabinet
Flexible design	To accommodate building columns within containment space

applications

The Net-Contain™ Universal Aisle Containment (UAC) System will be able to retrofit in a Brownfield (existing Data Center) or Greenfield (new Data Center) application that uses Panduit or non-Panduit cabinets. Offering includes roof containment (typically used for Cold Aisle Containment) and vertical wall containment (typically used for Hot Aisle Containment). This is an independent containment system that accommodates any manufacturer cabinets of varying heights and widths.

It can be deployed in a full or partial row. Cabinets can be rolled in and out of position without disturbing the structure. This passive system contains no moving parts, resulting in a more energy efficient solution than comparable forced-air options.

PANDUIT®

SPECIFICATION SHEET

Net-Contain™ Universal Aisle Containment System

Roof and Vertical Wall

Mid-Span Cabinet Support:	CUCMSS03ST01NC CUCMSS06ST01NC CUSMPR52ST01B1
----------------------------------	--

Roof Containment

EOR Frame – 3 ft. (900mm) Aisle Width:	CUSREFRT8B1 CUSREFRT9B1 CUEFRCKITB1
EOR Frame – 4 ft. (1200mm) Aisle Width:	CUEFRT8W04B1 CUEFRT9W04B1
EOR Frame – 6 ft. (1800mm) Aisle Width:	CUEFRT8W06B1 CUEFRT9W06B1

Vertical Wall Containment

EOR Frame – 3 ft. (900mm) Aisle Width:	CUSREFRT8B1 CUSREFRT9B1 CUEFRCKITB1
EOR Frame – 4 ft. (1200mm) Aisle Width:	CUEFRT8W04B1 CUEFRT9W04B1

Roof and Vertical Wall

Full Height Blanking Panels	CUFBPR4206HBB1 CUFBPR4506HBB1 CUFBPR4806HBB1 CUFBPR5206HBB1
Top of Cabinet Blanking Panels:	CUTBPR0610HBN1

Roof Containment

Roof Section – 3 ft. (900mm) Aisle Width:	CUSRRFS06B1 CUSRRFS07B1 CUSRRFS08B1
Roof Section – 4 ft. (1200mm) Aisle Width:	CURFS06F04HBB1 CURFS07F04HBB1 CURFS08F04HBB1
Roof Section – 6 ft. (1800mm) Aisle Width:	CURFS06F06HBB1 CURFS07F06HBB1 CURFS08F06HBB1

Vertical Wall Containment

Vertical Wall Adapters:	CUSRVWA06B1 CUSRVWA07B1 CUSRVWA08B1 CUVWA06S06STB1 CUVWA07S07STB1 CUVWA08S08STB1
Vertical Wall Brace:	CUSRVWBB1 CUVWB12S12STB1

Roof and Vertical Wall

Wall Beam in pairs:	CUWBPS06ST02B1 CUWBPS07ST02B1 CUWBPS08ST02B1 CUWBPS24ST02B1
Wall Beam- single:	CUWBSS06ST01B1 CUWBSS07ST01B1 CUWBSS08ST01B1 CUWBSS24ST01B1
Double Sliding Door:	CUD2SDB1 CUD1SDB1
Single Sliding Door:	CUSR1SDRH1 CUSR1SDLHB1

Vertical Wall Containment

Vertical Wall:	C2HAC06I1626B1 C2HAC07I1626B1 C2HAC08I1626B1 C2HAC06I2638B1 C2HAC07I2638B1 C2HAC08I2638B1 C2HAC06I3866B1 C2HAC07I3866B1 C2HAC08I3866B1
EOR Vertical Wall:	CUSRVWER1626B1 CUSRVWER2638B1 CUSRVWER3866B1 C2HACERI1626B1 C2HACERI2638B1 C2HACERI3866B1

Roof and Vertical Wall

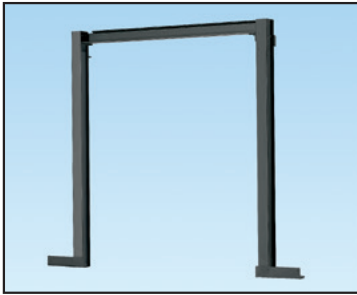
Cabinet to Floor Seal:	CUCFS06B1 CUCFS07B1 CUCFS08B1 CUCFS10B1
Building Column Adapter:	CUCAKITB1

Net-Contain™ Universal Aisle Containment System

product offering

Information required and available options to configure Universal Aisle Containment:

- Width of the containment aisle – 900mm, 1200mm, and 1800mm
- Height of containment aisle – 42/45 RU, or 48/52 RU
- End-of-Row frame – 42/45 RU, or 48/52 RU
- Length of the aisle – unlimited, every 100mm increments
(wall beams: 600mm, 700mm, 800mm, 2400mm)



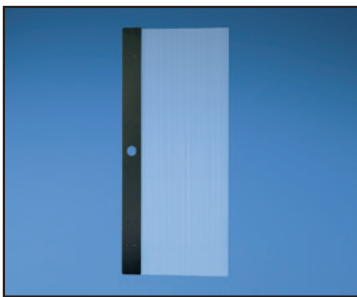
End of Row Frame (two per System)



Sliding Doors

For Roof Containment:

- Based on aisle width, decide ceiling structures – 600mm, 700mm, 800mm
- Based on height of the containment, and width of the aisle, decide End-of-Row frame for roofing – (42/45RU and 48/52RU – 1200mm, 1800mm)



Roofing Sections

Net-Contain™ Universal Aisle Containment System

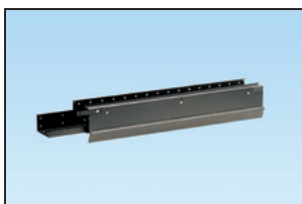
product offering (continued)

For Vertical Walls Containment:

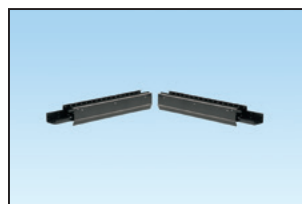
- Based on room height, containment height, aisle length, decide vertical walls (width: 600mm, 700mm, 800mm) (Height: 16' – 26', 26' – 38', 38' – 66')
- Based on vertical wall size, decide vertical wall adapter – 600mm, 700mm, 800mm
- Based on vertical wall size, decide end of row adjustable vertical wall – 16' – 26', 26' – 38', 38' – 66'
- Determine number of vertical wall braces (1 required for every 2400mm length)
- Depending on height of the containment, and width of the aisle, decide end-of-row frame for vertical walls – (42/45 RU or 48/52 RU)



Vertical Wall Adapter



Single and Set of Two Wall Beams

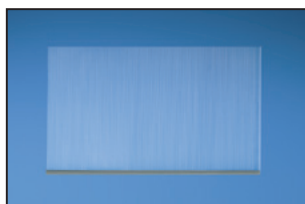


Accessories:

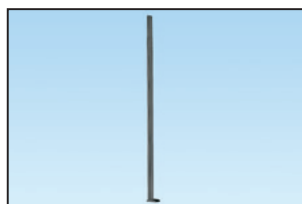
- In absence of cabinets, use full blanking panel to fill the empty space – 600mm x 42 RU, 45 RU, 48 RU, or 52 RU
- To fill the gap between cabinet and frame use top of cabinet blanking panel
- Mid-Span Post – required for every 2400mm length on partial populated row
- Mid-Span Cabinet Support – required for every 2400mm length on fully populated containment
- Cabinet to floor seal
- End of Row floor seal
- SmartZone™ Solutions (optional)



Full Length Blanking Panel



Top of Cabinet Blanking Panel



Mid-Span Post



Mid-Span Cabinet Support

WORLDWIDE SUBSIDIARIES AND SALES OFFICES

PANDUIT CANADA
Markham, Ontario
cs-cdn@panduit.com
Phone: 800.777.3300

PANDUIT EUROPE LTD.
London, UK
cs-emea@panduit.com
Phone: 44.20.8601.7200

PANDUIT SINGAPORE PTE. LTD.
Republic of Singapore
cs-ap@panduit.com
Phone: 65.6305.7575

PANDUIT JAPAN
Tokyo, Japan
cs-japan@panduit.com
Phone: 81.3.6863.6000

PANDUIT LATIN AMERICA
Guadalajara, Mexico
cs-la@panduit.com
Phone: 52.33.3777.6000

PANDUIT AUSTRALIA PTY. LTD.
Victoria, Australia
cs-aus@panduit.com
Phone: 61.3.9794.9020

For a copy of Panduit product warranties, log on to www.panduit.com/warranty

For more information

Visit us at www.panduit.com

Contact Customer Service by email: cs@panduit.com
or by phone: 800.777.3300

PANDUIT®

©2016 Panduit Corp.
ALL RIGHTS RESERVED.
RKSP141--WW-ENG
7/2016

Looking for pricing, stock, or lifecycle information?

Click below to explore more details on WIN SOURCE:

 [View CUWBSS07ST01B1 on WIN SOURCE](#)

 [Panduit Corp](#) Information

Optimize Your Supply Chain with WIN SOURCE Solutions

-  Global Sourcing Solution
-  Obsolete Management
-  Cost Control Management
-  Shortage Management
-  Alternative Solution
-  Excess Inventory Management