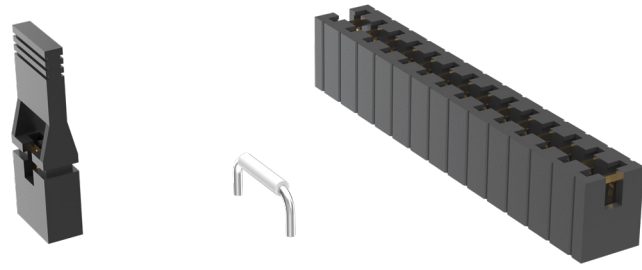


SHUNTS & JUMPERS



(2.54 mm) .100" PITCH • SNT/MNT/2SN/SNM/PK/JL SERIES

SNT/MNT

Mates:

TSW, HTSW, MTSW,
HMTSW, TLW, DW, EW,
ZW, HW, TSM, BST, PHT

2SN

Mates:

TMMH, TMM,
MTMM, MMT, TW,
LTMM, ZLTMM, TSH, EHT

SNM

Mates:

TMS, MTMS, DWM

SPECIFICATIONS

SNT

Insulator Material:

Glass Filled Polyester

Contact Material:

Phosphor Bronze

Current Rating (SNT/TSW):

4.3 A per pin

(1 pin powered per row)

Operating Temp Range:

-55 °C to +125 °C (Gold)

-55 °C to +105 °C (Tin)

Insertion Depth:

(4.32 mm) .170" minimum

Lead Size accepted:

(0.64 mm) .025" SQ

MNT

Same as SNT except:

Current Rating (MNT/TSM):

3.9 A per pin

(1 pin powered per row)

Working Voltage:

450 VAC

2SN

Same as SNT except:

Insertion Depth:

(2.29 mm) .090" minimum

Lead Size accepted:

(0.51 mm) .020" SQ

SNM

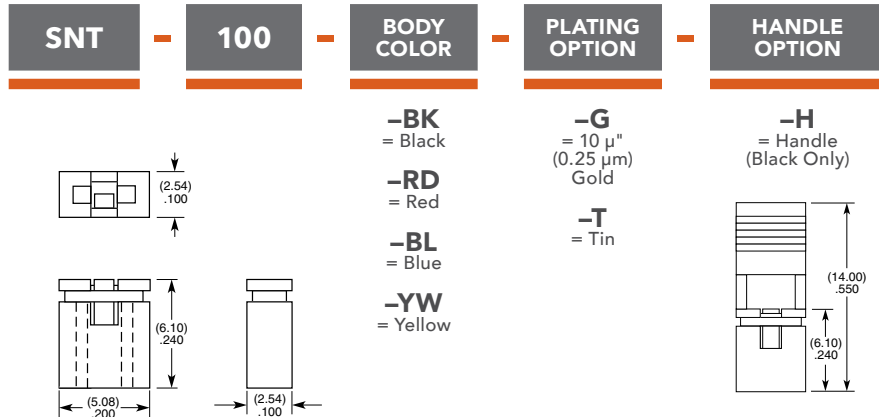
Same as SNT except:

Insertion Depth:

(3.43 mm) .135" minimum

Max Processing Temp:

Not recommended for IR/VP



-BK
= Black

-RD
= Red

-BL
= Blue

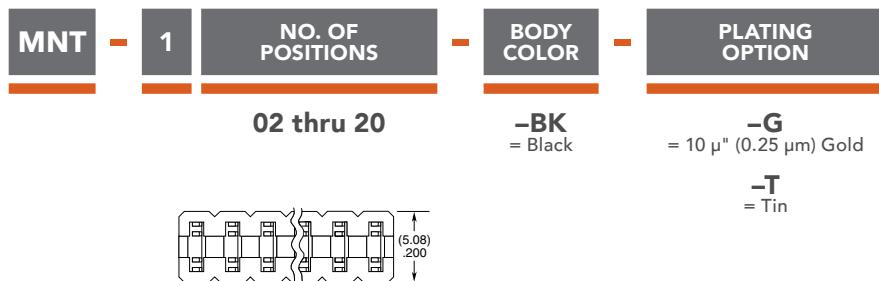
-YW
= Yellow

-G
= 10 μ"
(0.25 μm)
Gold

-T
= Tin

-H
= Handle
(Black Only)

Note:
Other Gold plating options available.

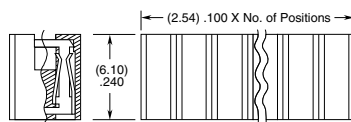


02 thru 20

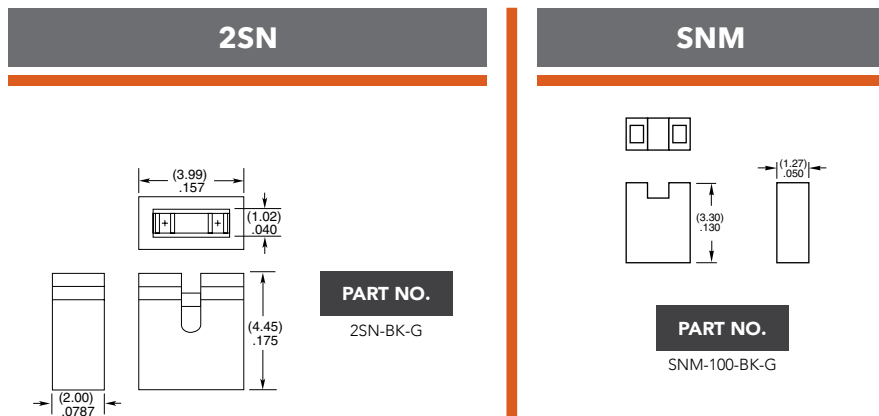
-BK
= Black

-G
= 10 μ" (0.25 μm) Gold

-T
= Tin

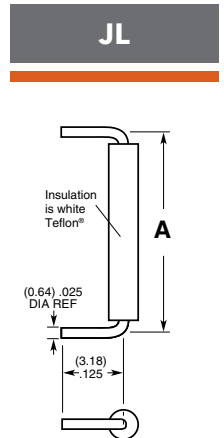


Note:
Some lengths, styles and options are non-standard, non-returnable.



PART NO.
2SN-BK-G

PART NO.
SNM-100-BK-G



PART NO.	A
JL-100-25-T	(2.54) .100
JL-250-25-T	(6.35) .250
JL-400-25-T	(10.16) .400

Note:
For complete specifications see www.samtec.com?JL



PART NO.	A	B
PK-01-06	(0.64) .025 SQ	(5.84) .230
PK-01-07	(0.51) .020 SQ	(3.18) .125

Insulator Material:
Natural Thermoplastic

Note:
Order per wheel.
6 pins per wheel.

Looking for pricing, stock, or lifecycle information?

Click below to explore more details on WIN SOURCE:

 [View SNT-100-BL-G on WIN SOURCE](#)

 [Samtec Inc. Information](#)

Optimize Your Supply Chain with WIN SOURCE Solutions

-  Global Sourcing Solution
-  Obsolete Management
-  Cost Control Management
-  Shortage Management
-  Alternative Solution
-  Excess Inventory Management