



**THE DATASHEET OF
SML-LXLC1206SYC-TR**

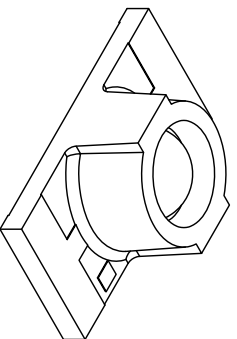
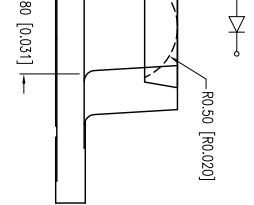
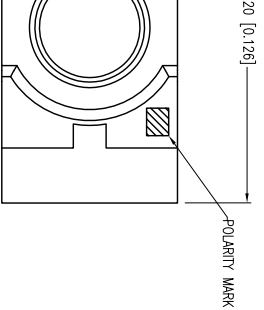


PART NUMBER

SML-LXLC1206SYC-TR

REV.

-



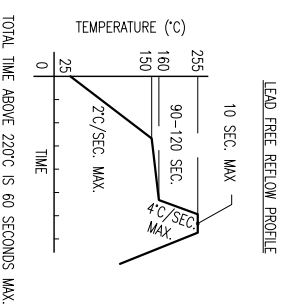
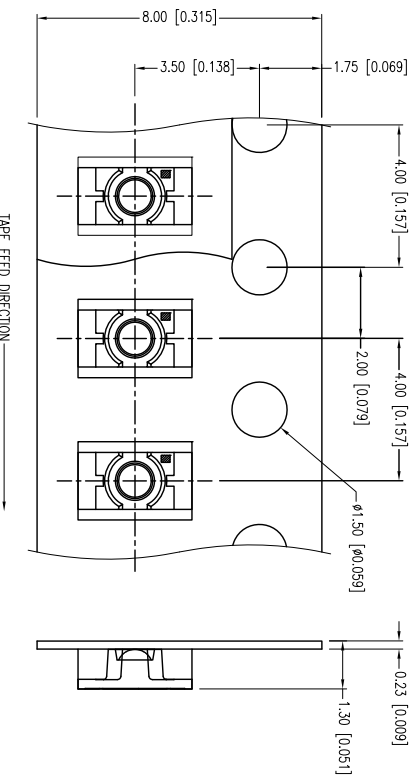
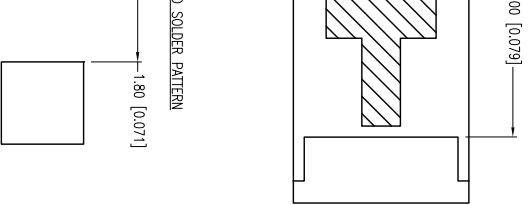
ELECTRO-OPTICAL CHARACTERISTICS $I_F=20\text{mA}$			
PARAMETER	MIN	TYP	MAX
PEAK WAVELENGTH		590	
FORWARD VOLTAGE		2.0	2.5
REVERSE VOLTAGE	5.0		
AXIAL INTENSITY		350	
VIEWING ANGLE		70	
EMITTED COLOR:	YELLOW		
LENS FINISH:	WATER CLEAR		

LIMITS OF SAFE OPERATION AT 25°C

PARAMETER	MAX	UNITS
PEAK FORWARD CURRENT*	175	mA
STEADY CURRENT	30	mA
POWER DISSIPATION	75	mW
DERATE FROM 25°C	-1.2	mW/°C
OPERATING TEMP.	-40 TO +85	°C
STORAGE TEMP.	-40 TO +85	°C

* I<10µs

CAUTION: MOISTURE SENSITIVE DEVICE
PER JEDEC LEVEL 3 STANDARDS



SOLDER PATTERN

1.80 [0.071]

Y A/E: X±1 (+0.039), X.X=±0.5 (+0.020), X.XX=±0.25 (+0.010), X.XXX=±0.127 (+0.005), LEAD SIZE=±0.05 (+0.002), LEAD LENGTH=±0.75 (+0.030), MIN.= -0.000, DECIMAL PRECISION MAX.= +0.000, DECIMAL PRECISION
 SAN JL 60188-4900
 800.278.5666
 3.15.2152
 LUXEY.COM
 LUXEY INC.

THE INFORMATION CONTAINED IN THIS DOCUMENT IS THE PROPERTY OF LUXEY INC. EXCEPT AS SPECIFICALLY AUTHORIZED IN WRITING BY LUXEY INC., THE HOLDER OF THIS DOCUMENT SHALL KEEP ALL INFORMATION CONTAINED HEREIN CONFIDENTIAL AND SHALL PROTECT SAME IN WHOLE OR IN PART FROM DISCLOSURE AND DISSEMINATION TO ALL THIRD PARTIES.

CONFIDENTIAL INFORMATION

THE SPECIFICATIONS MAY CHANGE AT ANY TIME WITHOUT NOTICE DUE TO NEW MATERIALS OR PRODUCT IMPROVEMENT.

1.6mm X 3.2mm, SMT LED WITH LENS, 590nm YELLOW.



UNCONTROLLED DOCUMENT

DATE:	08.16.13	DRAWN BY:	MA
PAGE:	1 OF 1	CHKD BY:	KF
SCALE:	NTS	APRVD BY:	KF
UNIT:	mm [INCH]		



Looking for pricing, stock, or lifecycle information?

Click below to explore more details on WIN SOURCE:

-  [View SML-LXLC1206SYC-TR on WIN SOURCE](#)
-  [Lumex Opto/Components Inc. Information](#)

Optimize Your Supply Chain with WIN SOURCE Solutions

-  Global Sourcing Solution
-  Obsolete Management
-  Cost Control Management
-  Shortage Management
-  Alternative Solution
-  Excess Inventory Management