



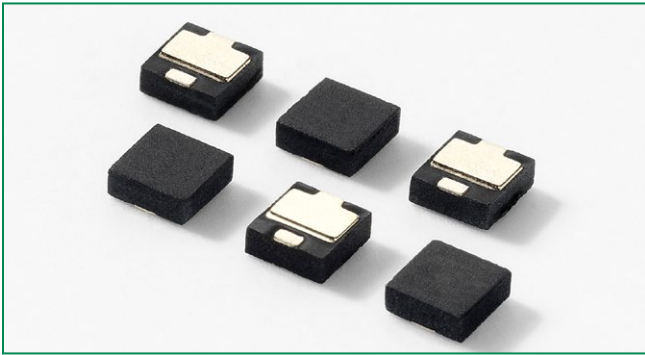
# THE DATASHEET OF PLED5Q12



## PLED5 QFN Series

RoHS

**OBSOLETE** DATE: 31/12/2018 PCN/ECN#\_LFPCN41214  
REPLACED BY: PLED6N

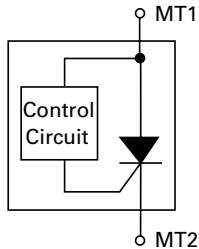


### Description

This PLED5 Open LED Protector component provides three methods for increasing the reliability of LED lighting:

- 1) If one of the LEDs in an array fails open, this device provides a substitute electronic path so that the string continues to function
- 2) It protects against ESD events up to  $\pm 8$  kV for contact discharges and  $\pm 15$  kV for air discharges per the IEC 61000-4-2 electrostatic immunity standard.
- 3) It provides protection in the case of accidental reverse battery or power connection.

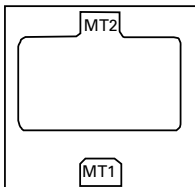
### Schematic Symbol



High reliability of lighting functions such as traffic lighting, aircraft lighting, advertising lighting, and runway lighting demand the use of a component such as the PLED5.

Littelfuse offers over current component for implementation in power circuits that can also enhance the reliability of circuit operation. Our full line of circuit protection products can be viewed at [www.littelfuse.com](http://www.littelfuse.com).

### Pinout



### Features & Benefits

- Reverse Battery/Power Protection
- Low Turn-On (Trigger Voltage)
- ESD, IEC 61000-4-2,  $\pm 8$ kV contact,  $\pm 15$  kV air
- Ideal for MR16, PAR type lamps
- Open LED bypass up to 500 mA
- Fast Switching
- Resets After Power Cycle

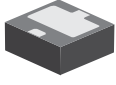
### Electrical Characteristics

Part	Marking	Symbol	Parameter	Conditions	MIN	TYP	MAX	Unit	
PLED5Q12	Px5	$V_{AK}$	Input Voltage				40	V	
		$V_{TO}$	Turn-On Voltage		4.65	4.9	5.15	V	
		$I_S$	Switching Current				20	mA	
		$V_{OS}$	On-State Voltage	$I_{AK} = 350$ mA		1	1.3	V	
		$I_{OS}$	On-State Current	(with adequate heat sinking)			500	mA	
		$V_{OSR}$	Reverse On-State Voltage	$I = 350$ mA		1	1.4	V	
		$I_{OSR}$	Reverse On-State Current				500	mA	
		$I_{DRM}$	Leakage Current	$V_{AK} = 3.5$ V			100	150	$\mu$ A
		$V_{ESD}$	ESD Withstand Voltage <sup>1</sup>	IEC 61000-4-2 (Contact)		$\pm 8$			kV
IEC 61000-4-2 (Air)		$\pm 15$				kV			

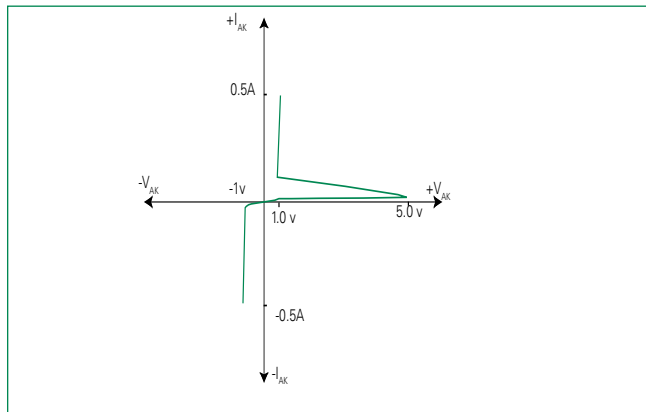
Notes:

<sup>1</sup>Parameter is guaranteed by design and/or component characterization.

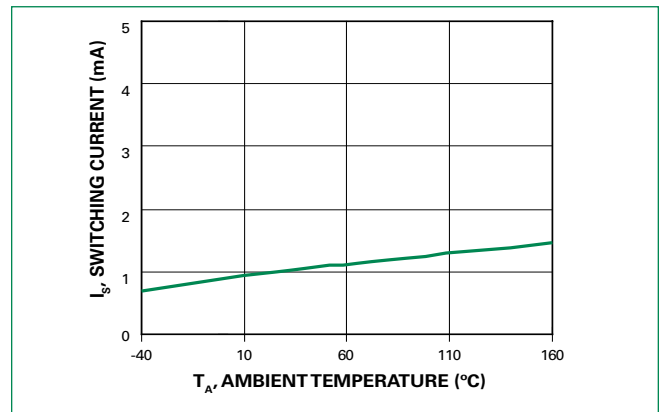
## Thermal Considerations

Package	Symbol	Parameter	Value	Unit
 <p>QFN</p>	$T_{OP}$	Operating Temperature	-40 to 85	°C
	$T_J$	Maximum Junction Temperature	150	°C
	$T_{STOR}$	Storage Temperature	-65 to 150	°C

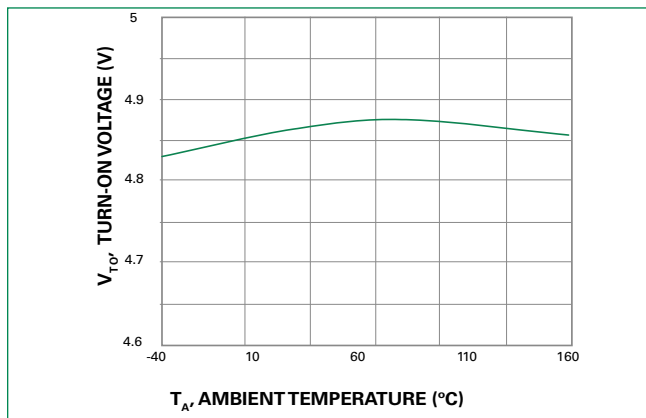
## V-I Characteristics



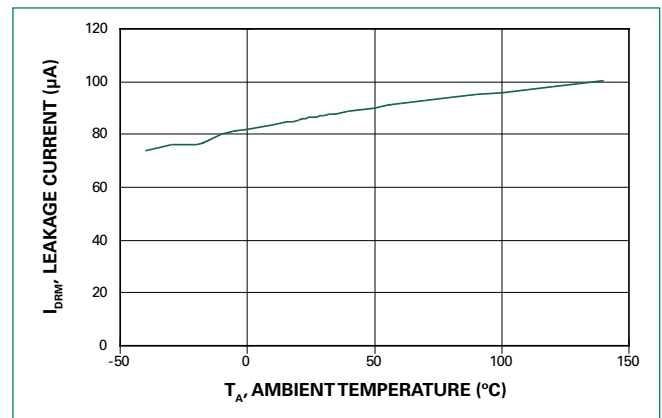
## Switching Current vs Temperature



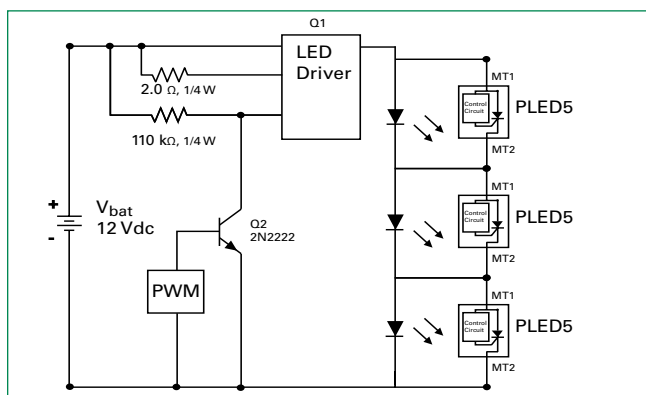
## Turn On Voltage vs Temperature



## Leakage Current vs Temperature



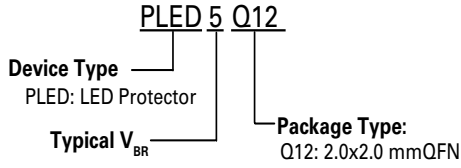
## LED Application and Interference Test Circuit



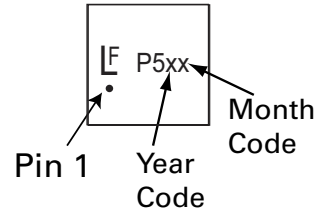
## Ordering Information

Catalog Number	Package Type	Quantity Per Reel
PLED5Q12	QFN	3000 Pieces

## Part Numbering System

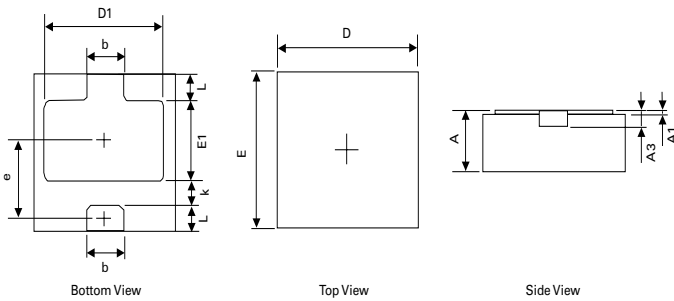


## Part Marking System

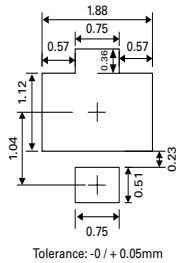


## Package Dimensions - QFN

### Device Dimensions:

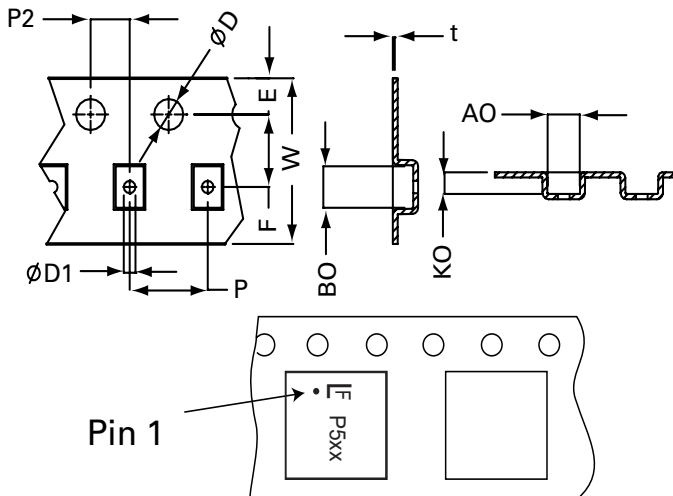


### Recommended Soldering Pad Dimensions:



Dimension Symbol	Millimetres	
	Min	Max
A	0.700/0.800	0.800/0.900
A1	0.000	0.050
A3	0.203REF	
D	1.924	2.076
E	1.924	2.076
D1	1.580	1.780
E1	0.820	1.020
k	0.200MIN.	
b	0.550	0.650
e	1.045TYP.	
L	0.254	0.406


## Tape and Reel Specification - QFN



	Millimetres		Inches	
	Min	Max	Min	Max
E	1.65	1.85	0.065	0.073
F	3.45	3.55	0.136	0.140
D1	1.00	-	0.040	-
D	1.50 min		0.059 min	
P	3.90	4.10	0.154	0.161
W	7.70	8.30	0.303	0.327
P2	1.95	2.05	0.077	0.081
A0	2.20	2.30	0.086	0.090
B0	2.20	2.30	0.086	0.090
K0	0.64	0.74	0.025	0.029
t	0.20 typ		0.007 typ	

## Looking for pricing, stock, or lifecycle information?

Click below to explore more details on WIN SOURCE:

 [View PLED5Q12 on WIN SOURCE](#)

 [Littelfuse Inc. Information](#)

## Optimize Your Supply Chain with WIN SOURCE Solutions

-  Global Sourcing Solution
-  Obsolete Management
-  Cost Control Management
-  Shortage Management
-  Alternative Solution
-  Excess Inventory Management