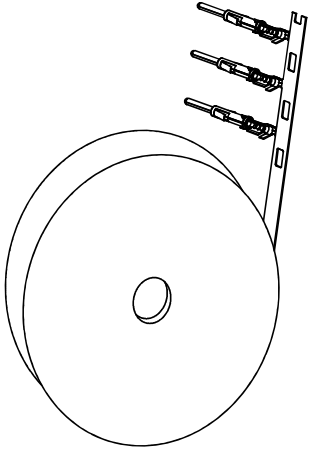


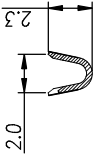


# THE DATASHEET OF SP20M1F

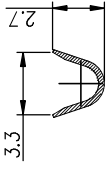




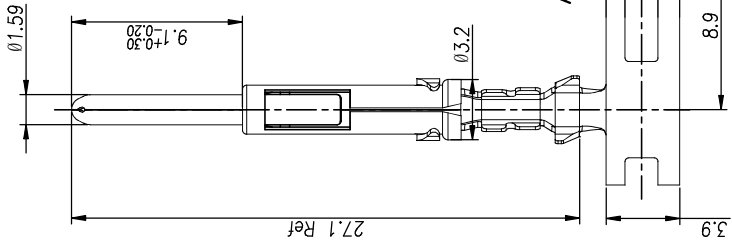
CONTACT ORIENTATION ON ROLL



SECTION B-B



SECTION A-A



- NOTES : (UNLESS OTHERWISE SPECIFIED)**
1. MATERIAL :
    - 1.1. CONTACT BODY : COPPER ALLOY.
    - 1.2. OUTER SPRING : STAINLESS STEEL
  2. SPECIFICATIONS :
    - 2.1 CURRENT RATING : 13A MAX.
    - 2.2 TERMINATION TYPE : CRIMPING.
    - 2.3 WIRE RANGE : 20~22AWG.
    - 2.4 WIRE INSULATION DIA(MAX) : Ø3.2mm.
  3. ROHS COMPLIANT.
  4. ALL DIMENSIONS ARE FOR REFERENCE USE ONLY.
  5. AVAILABLE TOOLS :
    - 5.1 HAND CRIMPER : MFX-3954.
    - 5.2 CRIMP APPLICATOR : MFX-3957.
    - 5.3 EXTRACTION TOOL : QXRT16.



P/N	CONTACT PLATING(MATING AREA)
SP20M1T	TIN PLATING OVER NICKEL.
SP20M1F	GOLD FLASH PLATING OVER NICKEL.
SP20M1G10	10µ" GOLD PLATING OVER NICKEL.
SP20M1G15	15µ" GOLD PLATING OVER NICKEL.
SP20M1G30	30µ" GOLD PLATING OVER NICKEL.

QUANTITY	PART NUMBER	MATEF
UNLESS OTHERWISE SPECIFIED		
1) All dimensions are in metric(mm).		
2) Tolerances are as follows:		
DATE:	BY:	CHKD:
3-PL DEC 40'15	BN	JHK
APPROVAL:	ENGINEER:	
APPROVAL:	APPROVAL:	
CUSTOMER:	CUSTOMER:	
THIS DRAWING IS SUPPLIED FOR REFERENCE ONLY. IT IS NOT TO BE USED FOR SPECIFICATIONS AND PERFORMANCE. THE PROPERTY RIGHTS IN THIS DRAWING ARE RESERVED. REPRODUCTION OR REPRODUCTION OF REPRODUCTION ARE IMPLIED. ALL DIMENSIONS ARE TO UNLESS OTHERWISE SPECIFIED. MANUFACTURING VARIATIONS.		
PROCESS SPECIFICATIONS		
NEXT ASSY:		

REV	ECO	REL
B1	-	

## Looking for pricing, stock, or lifecycle information?

Click below to explore more details on WIN SOURCE:

-  [View SP20M1F on WIN SOURCE](#)
-  [Amphenol Sine Systems Corp Information](#)

## Optimize Your Supply Chain with WIN SOURCE Solutions

-  Global Sourcing Solution
-  Obsolete Management
-  Cost Control Management
-  Shortage Management
-  Alternative Solution
-  Excess Inventory Management