



**THE DATASHEET OF
DW-12-14-G-T-915**



NOTES:

1. $\text{\textcircled{C}}$ REPRESENTS A CRITICAL DIMENSION.
- 2-8. NOTES DELETED
9. MAXIMUM HEIGHT VARIATION BETWEEN ANY TWO PINS AND ROW: .010[0.25]
10. CONTACT AREA -F, -S, -L, -P GOLD TO BE ON LONGER TAIL.
-G, -H, -E HEAVY GOLD TO BE ON LONGER TAIL.
11. CRIMPED TAILS OF .084 TO BE TOLERANCED $+.008/-0.000[+0.20/-0.00]$
12. TSW-50-D TO BE USED IF RTSW-50-D IS NOT AVAILABLE.
13. .000[0.00] MIN IF TAIL LENGTH IS GREATER THAN OR EQUAL TO .055[1.40]
14. MINIMUM TERMINAL PUSHOUT FORCE: 3 LBS
15. MAXIMUM CUT FLASH: .010[0.25]
16. FOR ADDED MECHANICAL STABILITY, SAMTEC RECOMMENDS MECHANICAL BOARD SPACERS BE USED IN APPLICATIONS WITH GOLD OR SELECTIVE GOLD PLATED CONNECTORS.
CONTACT IPG@SAMTEC.COM FOR MORE INFORMATION.

XW-XX-XX-XXX-X-XXXX-XXX-XX-XXX

- SERIES**
D: .110 TAIL LENGTH
E: .330 TAIL LENGTH
(N/A IN LEAD STYLES -07, -08, -16, OR -17)
Z: XXX TAIL LENGTH
- No OF POSITIONS**
-01 THRU -50
No OF POS PER ROW x .100[2.54]
- LEAD STYLE**
(SEE TABLE 1)
- PLATING SPECIFICATION**
-G: 10 μ " GOLD IN CONTACT AREA, 3 μ " GOLD ON TAIL
-T: MATTE TIN CONTACT AND TAIL
-S: 30 μ " SELECTIVE GOLD IN CONTACT AREA, MATTE TIN ON TAIL
-H: 30 μ " GOLD IN CONTACT AREA, 3 μ " GOLD ON TAIL
-L: 10 μ " SELECTIVE GOLD IN CONTACT AREA, MATTE TIN ON TAIL
-F: 3 μ " SELECTIVE GOLD IN CONTACT AREA, MATTE TIN ON TAIL
-E: 50 μ " GOLD IN CONTACT AREA, 3 μ " GOLD ON TAIL (STYLE -13 ONLY)
-STL: 30 μ " SELECTIVE GOLD IN CONTACT AREA, TIN/LEAD (90/10 \pm 5%) TAIL
-FM: 3 μ " SELECTIVE GOLD IN CONTACT AREA, MATTE TIN ON TAIL
-LM: 10 μ " SELECTIVE GOLD IN CONTACT AREA, MATTE TIN ON TAIL
-SM: 30 μ " SELECTIVE GOLD IN CONTACT AREA, MATTE TIN ON TAIL
-TM: MATTE TIN ON CONTACT AND TAIL
- OPTION**
POLARIZING SPEC (SEE FIG 3)
-XXX INDICATES OMITTED POS
- OPTION**
-LL: LOCKING LEAD (SEE FIG 2)
AVAIL ON TAILS FROM .084[2.13] - .310[7.87]
EXCEPT FOR -Q ROW AND POS 01 & 02 -S ROW
- TAIL LENGTH**
Z SERIES ONLY
- SPACE OPTION**

- ROW OPTION**
(SEE FIG 2)
-S: SINGLE (USE TSW-XX-S)
-D: DOUBLE (USE RTSW-XX-D)(SEE NOTE 12)
-T: TRIPLE (USE TSW-XX-T)
-Q: TRIPLE, ONLY OUTER ROWS FILLED (USE TSW-XX-T)

DO NOT SCALE FROM THIS PRINT

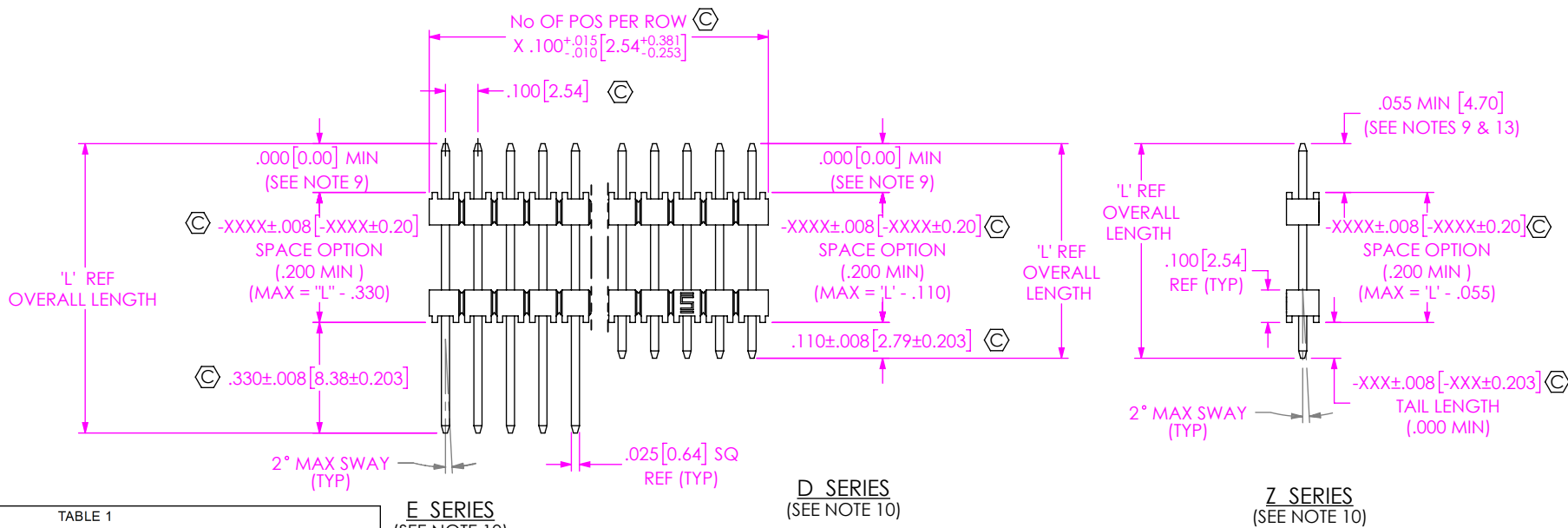
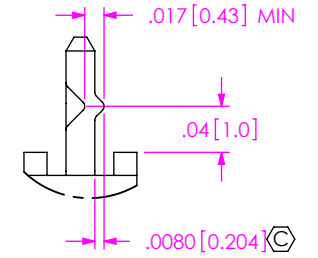
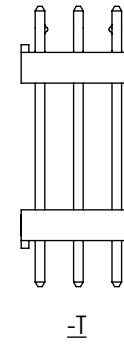
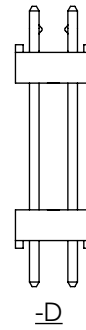
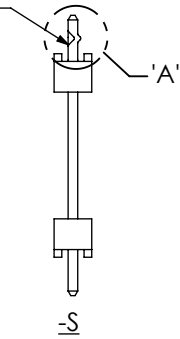


FIG 1

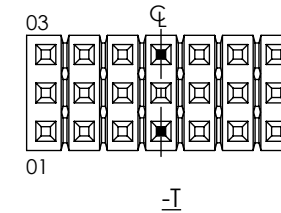
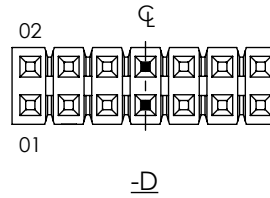
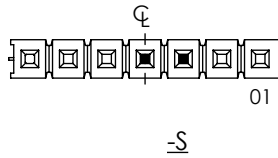
LEAD STYLE		TERMINAL	"L" - OVERALL LENGTH REF	CONTACT AREA
SERIES D & Z	SERIES E			
-07	N/A	T-1S6-07-XXX-2	.430 [10.92]	.165 [4.19]
-08	N/A	T-1S6-08-XXX-2	.530 [13.46]	.165 [4.19]
-09	-09	T-1S6-09-XXX-2	.730 [18.54]	.165 [4.19]
-10	-10	T-1S6-10-XXX-2	.830 [21.08]	.165 [4.19]
-11	-11	T-1S6-11-XXX-2	.930 [23.62]	.165 [4.19]
-12	-12	T-1S6-12-XXX-2	1.030 [26.16]	.165 [4.19]
-13	-13	T-1S6-13-XXX-2	1.230 [31.24]	.165 [4.19]
-14	-14	T-1S6-14-XXX-2	1.430 [36.32]	.165 [4.19]
-15	-15	T-1S6-15-XXX-2	.630 [16.00]	.165 [4.19]
-16	N/A	T-1S6-16-XXX-2	.445 [11.30]	.165 [4.19]
-17	N/A	T-1S6-17-XXX-2	.480 [12.19]	.165 [4.19]
-19	-19	T-1S6-19-XXX-2	1.330 [33.78]	.165 [4.19]
-20	-20	T-1S6-20-XXX-2	1.130 [28.70]	.165 [4.19]

<p>UNLESS OTHERWISE SPECIFIED, DIMENSIONS ARE IN INCHES. TOLERANCES ARE:</p> <p>DECIMALS ANGLES</p> <p>.XX: \pm.01 [0.3]</p> <p>.XXX: \pm.005 [0.13]</p> <p>.XXXX: \pm.0020 [0.051]</p>	<p>PROPRIETARY NOTE</p> <p>THIS DOCUMENT CONTAINS CONFIDENTIAL AND PROPRIETARY INFORMATION AND ALL DESIGN, MANUFACTURING, REPRODUCTION, USE, PATENT RIGHTS AND SALES RIGHTS ARE EXPRESSLY RESERVED BY SAMTEC, INC. THIS DOCUMENT SHALL NOT BE DISCLOSED, IN WHOLE OR PART, TO ANY UNAUTHORIZED PERSON OR ENTITY NOR REPRODUCED, TRANSFERRED OR INCORPORATED IN ANY OTHER PROJECT IN ANY MANNER WITHOUT THE EXPRESS WRITTEN CONSENT OF SAMTEC, INC.</p>	<p>520 PARK EAST BLVD, NEW ALBANY, IN 47150 PHONE: 812-944-6733 FAX: 812-948-5047 e-Mail info@SAMTEC.com code 55322</p>

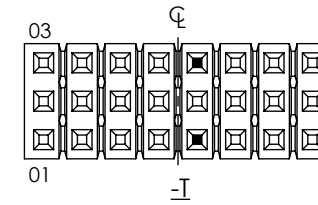
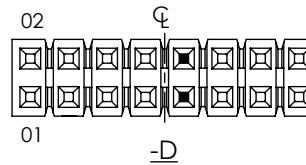
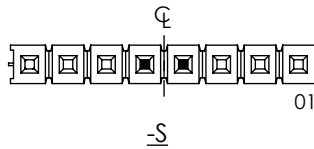
CRIMP SHORTER TAIL
(OPPOSITE CONTACT AREA)



DETAIL 'A'
SCALE 6 : 1



■ = CRIMP LOCATION
FOR -S, CRIMP CENTER POSITION & PIN CLOSEST TO PIN 1
ODD POSITIONS



■ = CRIMP LOCATION
FOR -S, TWO CENTER MOST PINS TO BE CRIMPED
EVEN POSITIONS

FIG 2
-LL: LOCKING LEAD
(SAME AS FIG 1, DIFFERENT AS SHOWN)

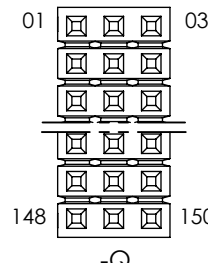
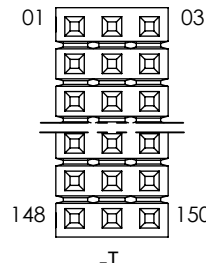
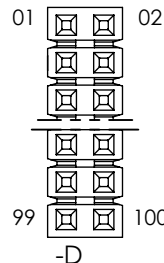
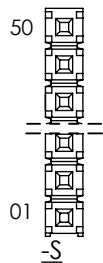


FIG 3

NUMBER OF POSITIONS WITH .330, .110, OR ZW TAIL DOWN

PROPRIETARY NOTE
THIS DOCUMENT CONTAINS CONFIDENTIAL AND PROPRIETARY INFORMATION AND ALL DESIGN, MANUFACTURING, REPRODUCTION, USE, PATENT RIGHTS AND SALES RIGHTS ARE EXPRESSLY RESERVED BY SAMTEC, INC. THIS DOCUMENT SHALL NOT BE DISCLOSED, IN WHOLE OR PART, TO ANY UNAUTHORIZED PERSON OR ENTITY NOR REPRODUCED, TRANSFERRED OR INCORPORATED IN ANY OTHER PROJECT IN ANY MANNER WITHOUT THE EXPRESS WRITTEN CONSENT OF SAMTEC, INC.



520 PARK EAST BLVD, NEW ALBANY, IN 47150
PHONE: 812-944-6733 FAX: 812-948-5047
e-Mail info@SAMTEC.com code 55322

DO NOT SCALE DRAWING

SHEET SCALE: 2:1



DESCRIPTION:
LOW COST BOARD SPACERS

DWG. NO.
XW-XX-XX-XXX-X-XXXX-XXX-XX-XXX

BY: WILLIAMS 08/13/1984 SHEET 2 OF 2

Looking for pricing, stock, or lifecycle information?

Click below to explore more details on WIN SOURCE:

-  [View DW-12-14-G-T-915 on WIN SOURCE](#)
-  [Samtec Inc. Information](#)

Optimize Your Supply Chain with WIN SOURCE Solutions

-  Global Sourcing Solution
-  Obsolete Management
-  Cost Control Management
-  Shortage Management
-  Alternative Solution
-  Excess Inventory Management