



**THE DATASHEET OF**  
**SS-63800-004F**





# MagJack® ICM

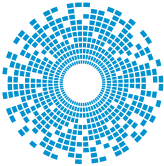
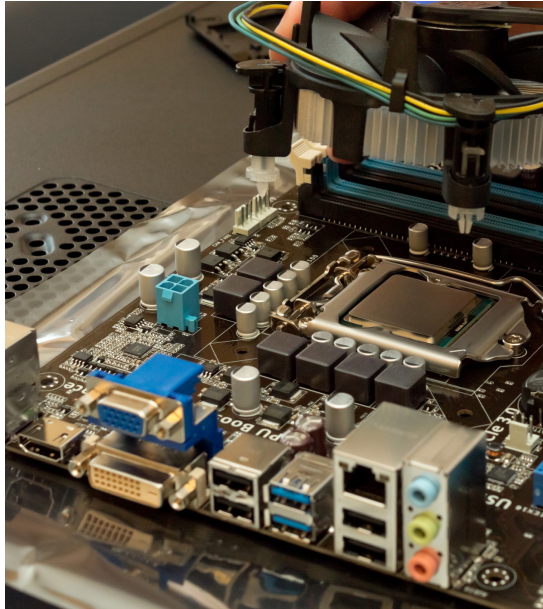
## Product Guide

Single Port ICMs

1xN Harmonica ICMs

2xN Stacked ICMs

Specialty ICMs



**bel** MAGNETIC SOLUTIONS  
a bel group

+1 858.676.9650  
[TechHelp@belf.com](mailto:TechHelp@belf.com)

# MagJack®

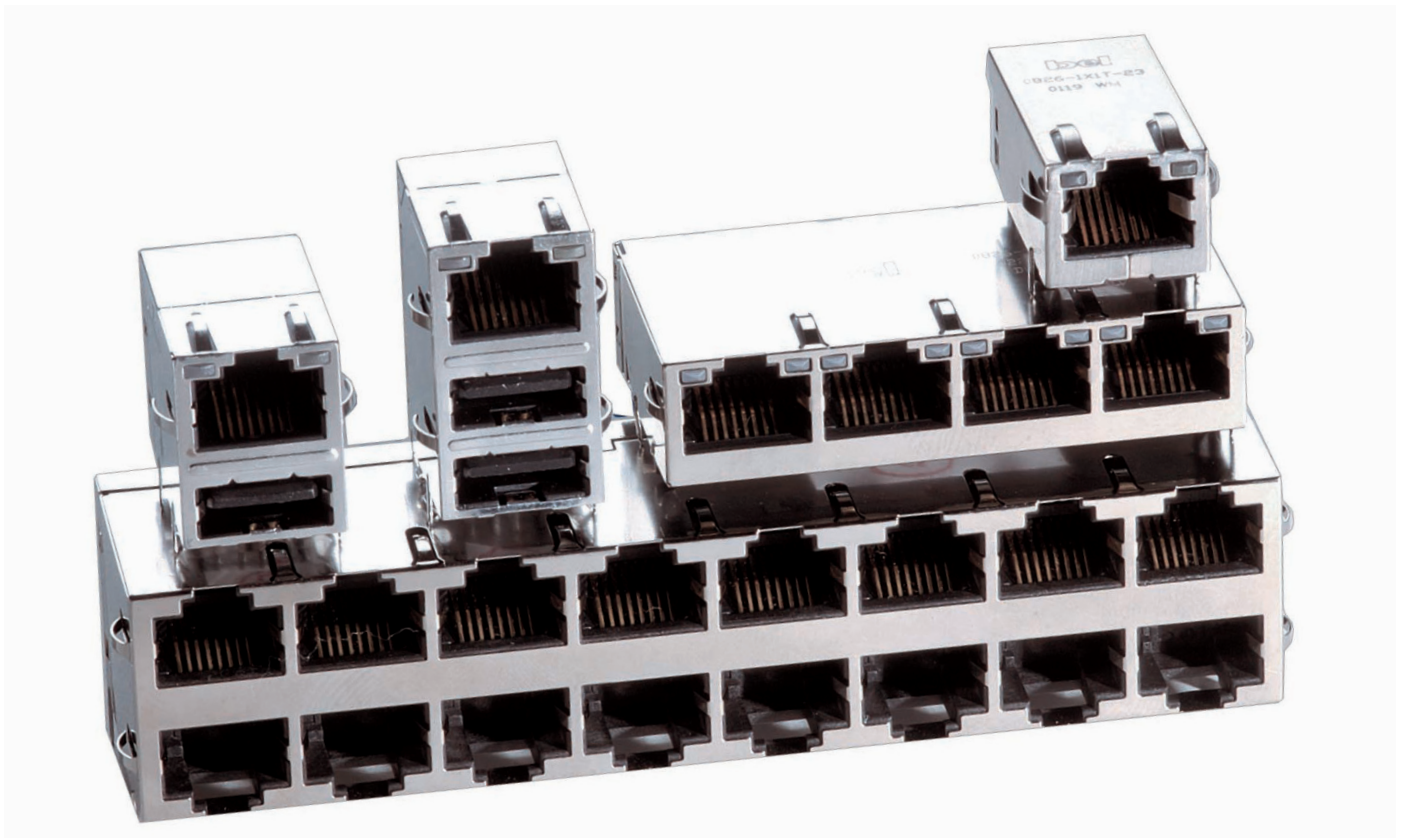
Bel invented and is the largest supplier of Integrated Connector Modules (ICM), which combines the Ethernet filtering solution within the connector. With several acquisitions, Bel has the broadest portfolio of MagJack® ICM products available.

## Networking Equipment

- Storage
- Switches
- Routers
- Servers
- Workstations
- Motherboards


## Applications

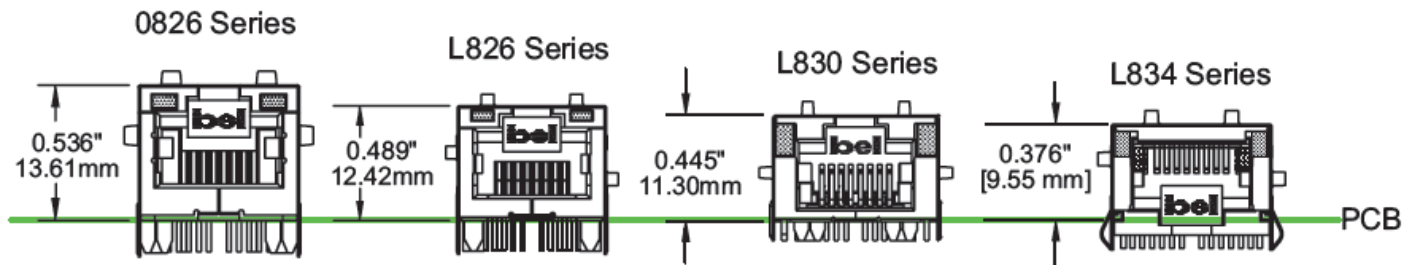
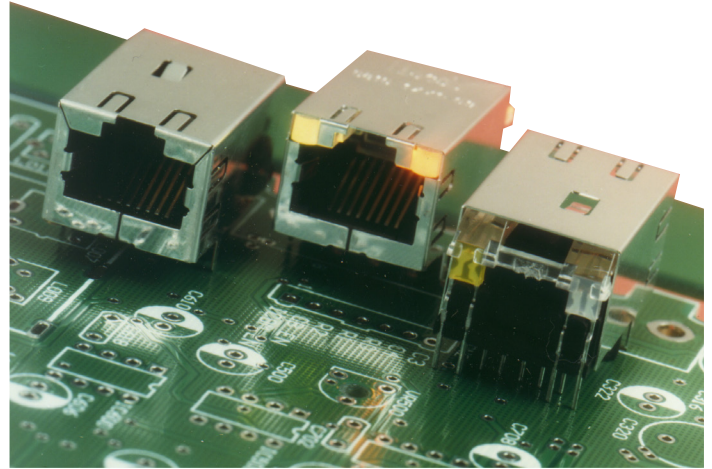
- 10/100BT AutoMDIX
- 1GBT (10/100/1000BT)
- 2.5GBT, 5GBT and 10GBT
- Power over Ethernet, 30W, 60W and 100W
- Extended Temperature Range of -40° to +85° C
- RoHS Compliant, Soldering = 260° C for 10 Seconds



ICMs combo devices provide a mix of RJ45 and USB connectors for greater design flexibility.

## Mechanical Options

- Plug Tab Up and Plug Tab Down
- With or Without LEDs  and Bi-Color
- Multi-Port Configurations: 2x1 / 2x4 / 2x6 / 2x8
- RJ45 and USB Port Combinations
- Low Profile Versions Under 0.50" Height
- Micro Height Versions Under 0.45" Height
- Mid-Plane Mount Versions Under 0.40" Height
- Two-Tier Stacked Designs Under 0.785" Height
- Vertical Mount Packaging



Bel ICMs Mechanical Evolution Continues to Provide More Efficient Space Utilization with Ultra-Low Profile Packages and Mid-Plane Mount Versions.



Compressor ICMs breaks the 1" height barrier with its two-tier port configuration within a package height of only 0.785" (19.94mm).

Vertical-mount ICMs are optimized for space-critical devices such as SBCs (single-board computers), motherboards, daughter cards, NICs (network interface cards), switches, hubs, and bridges. Applications include industrial PCs, printers, VoIP phones, remote sensor and transducer devices, security camera equipment, and wireless systems.



## Low Profile, Mid-Plane Mounted, Single Port Magjack® ICM

The MagJack® brand of low profile ICMs support 10/100Base-T, 1GBase-T and 10GBase-T Ethernet applications. This product type is aimed at customers who need very low profile height connectors or want to mount mezzanine cards above these connectors and are limited by height.

As systems become smaller and implement faster speeds, the Ethernet connectors must adapt and become smaller and faster. This ICM product family combines small form factor with speed to provide ultimate combination of both allowing customers to put Ethernet ports where never possible before.


### Features & Benefits

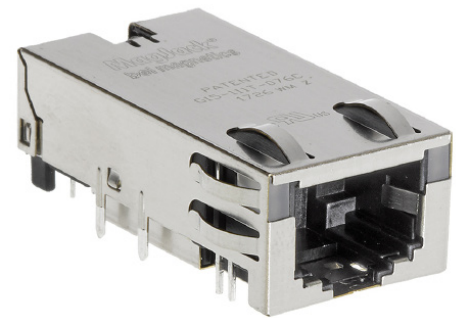
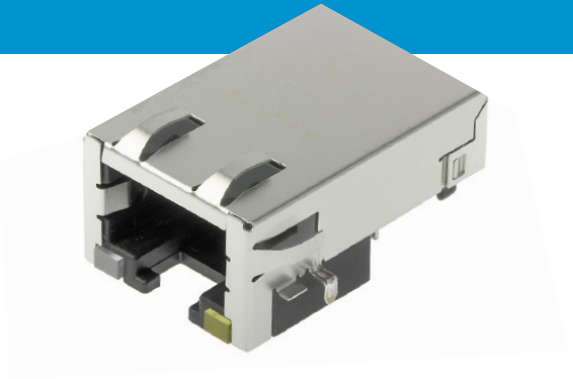
- Low profile height, less than .400" off the PCB
- High speed capable, from 10/100BT up to 10GBT
- Can be used in low profile applications
- Can be used in half U height applications
- Compatible with up to OCP 3.0 mechanical card requirements

### Applications

- Blade servers or cards
- Network Interface cards
- Laptop computers
- Storage systems
- Mezzanine cards

### Specifications

- Meets all IEEE 802.3 10/100Base-T thru 10GBase-T electrical requirements including RL, IL, Hi-pot and Common Mode parameters
- 100% hi-pot tested in production
- Comes with many different LED color combinations and options
- 50 micro-inches of gold plated contacts as required by the TIA 1096/FCC 47, Part 68.
- Lead-free wave-solder compatible, with some IR reflow compatible designs
- UL recognized
- RoHS 6/6 compliant 



**Bel Magnetic Solutions**  
12700 Stowe Drive  
Suite 200  
Poway, CA 92064 USA

+1 858.676.9650  
techhelp@belf.com

[belfuse.com/magnetic-solutions](http://belfuse.com/magnetic-solutions)

## Looking for pricing, stock, or lifecycle information?

Click below to explore more details on WIN SOURCE:

 [View SS-63800-004F](#) on WIN SOURCE

 [Stewart Connector](#) Information

## Optimize Your Supply Chain with WIN SOURCE Solutions

-  Global Sourcing Solution
-  Obsolete Management
-  Cost Control Management
-  Shortage Management
-  Alternative Solution
-  Excess Inventory Management