



**THE DATASHEET OF  
MTSW-203-08-T-S-320**



## MODIFIED .025" SQ POST HEADERS

(2.54 mm) .100" PITCH • MTSW/HMTSW SERIES



### MTSW/HMTSW

#### Board Mates:

SSW, SSQ, ESW,  
ESQ, BCS, BSW  
CES, SLW, HLE, SSM

#### Cable Mates:

IDSD, IDSS

### SPECIFICATIONS

#### Insulator Material:

MTSW: Black Glass  
Filled Polyester  
HMTSW: Natural Liquid  
Crystal Polymer

#### Terminal Material:

Phosphor Bronze

#### Plating:

Au or Sn over  
50 μ" (1.27 μm) Ni

#### Operating Temp Range:

-55 °C to +125 °C with Gold  
-55 °C to +105 °C with Tin

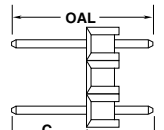
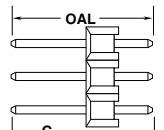
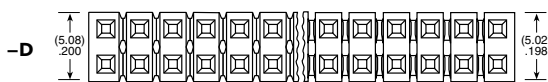
### PROCESSING

#### Lead-Free Solderable:

MTSW: No, Lead Wave Only  
HMTSW: Yes

| SERIES                                      | PIN CENTERS                                                           | NO. PINS PER ROW                                         | LEAD STYLE                                 |
|---------------------------------------------|-----------------------------------------------------------------------|----------------------------------------------------------|--------------------------------------------|
| <b>MTSW</b><br>= Modified Strip             | <b>-1</b><br>= (2.54 mm) .100" Pitch<br>(All positions filled)        | <b>01 thru 50</b><br>= .100" (2.54 mm)<br>Center Version | Specify<br><b>LEAD STYLE</b><br>from chart |
| <b>HMTSW</b><br>= Hi-Temp<br>Modified Strip | <b>-2</b><br>= (5.08 mm) .200" Pitch<br>(Every other position filled) | <b>02 thru 25</b><br>= .200" (5.08 mm)<br>Center Version |                                            |

| LEAD STYLE | OAL           |
|------------|---------------|
| -05        | (8.51) .335   |
| -06        | (7.62) .300   |
| -07        | (10.92) .430  |
| -08        | (13.46) .530  |
| -09        | (18.54) .730  |
| -10        | (21.08) .830  |
| -11        | (23.62) .930  |
| -12        | (26.16) 1.030 |
| -13        | (31.24) 1.230 |
| -21        | (36.32) 1.430 |
| -22        | (16.00) .630  |
| -23        | (11.30) .445  |
| -24        | (12.19) .480  |
| -27        | (33.78) 1.330 |
| -28        | (28.70) 1.130 |



MTSW

HMTSW

Straight Pin Versions: A=OAL-C- (2.54) .100"

| FOR "A" = (2.29) .090 |               |                          |
|-----------------------|---------------|--------------------------|
| LEAD STYLE            | OAL           | C<br>MAXIMUM<br>STRAIGHT |
| -05                   | (8.51) .335   | (5.97) .235              |
| -06                   | (7.62) .300   | (2.79) .110              |
| -07                   | (10.92) .430  | (6.10) .240              |
| -08                   | (13.46) .530  | (8.64) .340              |
| -09                   | (18.54) .730  | (13.72) .540             |
| -10                   | (21.08) .830  | (16.26) .640             |
| -11                   | (23.62) .930  | (18.80) .740             |
| -12                   | (26.16) 1.030 | (21.34) .840             |
| -13                   | (31.24) 1.230 | (26.42) 1.040            |
| -21                   | (36.32) 1.430 | (31.50) 1.240            |
| -22                   | (16.00) .630  | (11.18) .440             |
| -23                   | (11.30) .445  | (6.48) .255              |
| -24                   | (12.19) .480  | (7.37) .290              |
| -27                   | (33.78) 1.330 | (28.96) 1.140            |
| -28                   | (28.70) 1.130 | (23.88) .940             |

#### Note:

These Series are  
non-standard, non-returnable.



**PLATING OPTION**

- F**  
= Gold flash on post,  
Matte Tin on tail
- L**  
= 10 μm (0.25 μm)  
Gold on post,  
Matte Tin on tail
- G**  
= 10 μm (0.25 μm)  
Gold on post,  
Gold flash on balance
- T**  
= Matte Tin

**ROW OPTION**

- S**  
= Single Row
- D**  
= Double Row
- T**  
= Triple Row
- Q**  
= Double Row  
.200" (5.08 mm)  
row space

**POST HEIGHT**

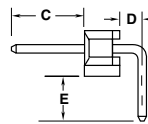
**"XXXX"**  
= "C" Dimension  
(Specify post height in  
INCHES  
.005" (0.13 mm) increments)

**OTHER OPTION**

- RA or -RE**  
= Right-angle  
(HMTSW -S & -D =  
36 positions maximum)
- LL**  
= Locking Lead  
(not available with -RE, not available  
in single row 1 or 2 positions)  
(Available on tails from (2.29 mm) .090"  
to (10.16 mm) .400" only)
- LA**  
= -RA option with -LL Option  
(Maximum "C" = (13.46 mm) .530")

**POLARIZED OPTION**

**"XXX"**  
= Polarized  
(Specify 'XXX' as position number)



**MTSW**

**HMTSW**

| -RX OPTION | D           |
|------------|-------------|
| -RA        | (1.52) .060 |
| -RE        | (4.06) .160 |

| FOR "E" = (2.29) .090 MIN FOR -RA & -RE |               |                    |                    |
|-----------------------------------------|---------------|--------------------|--------------------|
| LEAD STYLE                              | OAL           | C MAXIMUM with/-RA | C MAXIMUM with/-RE |
| -05                                     | (8.51) .335   | Not Available      | Not Available      |
| -06                                     | (7.62) .300   | Not Available      | Not Available      |
| -07                                     | (10.92) .430  | (3.30) .130        | Not Available      |
| -08                                     | (13.46) .530  | (5.84) .230        | (3.30) .130        |
| -09                                     | (18.54) .730  | (10.92) .430       | (8.38) .330        |
| -10                                     | (21.08) .830  | (13.46) .530       | (10.92) .430       |
| -11                                     | (23.62) .930  | (16.00) .630       | (13.46) .530       |
| -12                                     | (26.16) 1.030 | (18.54) .730       | (16.00) .630       |
| *-13                                    | (31.24) 1.230 | (23.62) .930       | (21.08) .830       |
| *-21                                    | (36.32) 1.430 | (28.70) 1.130      | (26.16) 1.030      |
| -22                                     | (16.00) .630  | (8.38) .330        | (5.84) .230        |
| *-23                                    | (11.30) .445  | (3.68) .145        | Not Available      |
| *-24                                    | (12.19) .480  | (4.57) .180        |                    |
| *-27                                    | (23.78) 1.330 | (26.16) 1.030      | (23.62) .930       |
| *-28                                    | (28.70) 1.130 | (21.08) .830       | (18.54) .730       |



\* Styles -21, -23, -24, -27 not available with -D Right-angle  
Styles -13, -21, -23, -24, -27, -28 not available with -T or -Q Right-angle

**Right-Angle Versions (- RA Options):** E=OAL-C- (5.33) .210"

**Right-Angle Versions (-RE Options) Single Row Only:** E=OAL-C- (7.87) .310"

## Looking for pricing, stock, or lifecycle information?

Click below to explore more details on WIN SOURCE:

-  [View MTSW-203-08-T-S-320 on WIN SOURCE](#)
-  [Samtec Inc. Information](#)

## Optimize Your Supply Chain with WIN SOURCE Solutions

-  Global Sourcing Solution
-  Obsolete Management
-  Cost Control Management
-  Shortage Management
-  Alternative Solution
-  Excess Inventory Management