



THE DATASHEET OF HX2326FNLT



TERIAL WITH FLAMMABILITY

0 +125°C

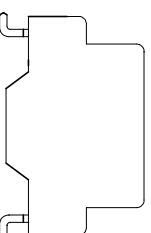
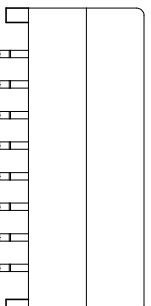
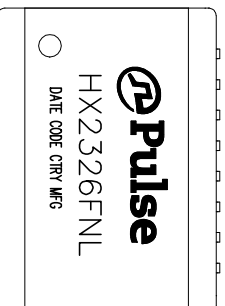
ILITY AT 245°C REFLOW PROFILE

MOISTURE SENSITIVE

MAXIMUM THROUGH REFLOW SOLDER

NG ADD A "T" SUFFIX

FNL BECOMES HX2326FNLT).



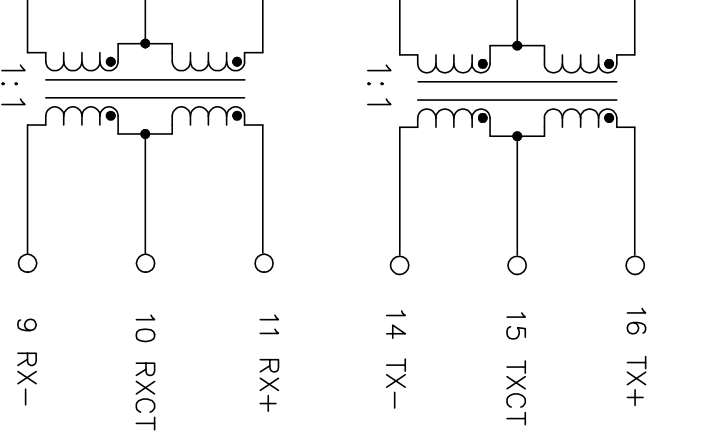
FINAL OUTLINE

All rights reserved. Pulse confidential & proprietary. (08/27/18)

TLA DRAWING	PS DRAWING	SHEET	PART NO.	DATASHEET REV.
HX2326FNL-11	PS-2005.002-F	1 OF 3	HX2326FNL	A

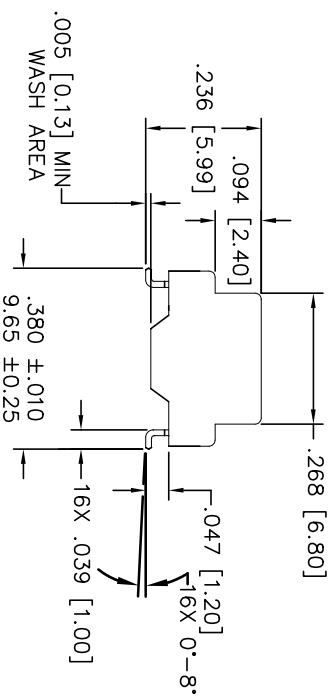
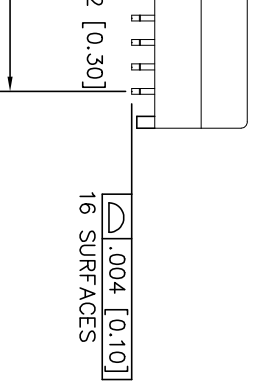
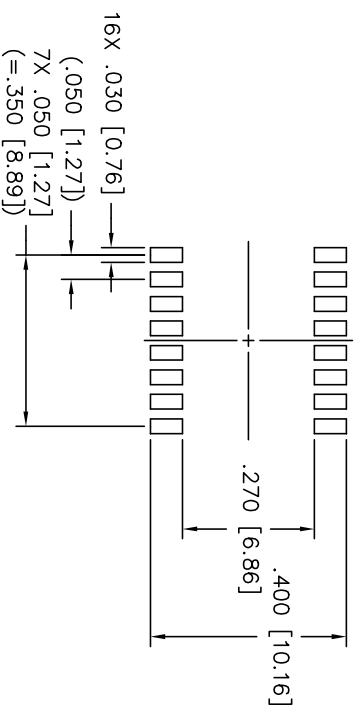
SEELECTRONICS.COM(Asia) PHONE:USA: 858 674 8100, GERMANY: 49 7032 78060, SINGAPORE: 65 6287 8998, SHANGHAI: 86 21 62787060, TAIWAN: 886 3 4356768

ELECTRICAL CHARACTERISTICS AT +25°C UNLESS OTHER SPECIFIED
(FOR REFERENCE ONLY. USED FOR CUSTOMER INFORMATION.)



PARAMETER	SPECIFICATIONS		
	OPERATING TEMP	-40°C TO +85°C	
TURNS RATIO	1.00 ± 2%		
POLARITY	PER SCHEMATIC		
	100 KHz	1-125 MHz	
INSERTION LOSS	-1.2 DB MAX	-0.2-0.002* $f^{1.4}$ DB MAX	
	.1-30 MHz	30-60 MHz	60-80 MHz
	-16 DB MIN	-10+20*LOG ₁₀ (f/60 MHz) DB MIN	-10 DB MIN
INDUCTANCE (OCL) (MEDIA SIDE, AT 100KHz, 0.1V _{dc} -40°C ~ +85°C)	350 uH MIN WITH 8mA DC BIAS		
	120 uH MIN WITH 19mA DC BIAS		
	1 MHz	10-100 MHz	
CROSSTALK, ADJACENT CHANNELS	-50 DB MIN	-55+22*LOG ₁₀ (f/10) DB MIN	
	2 MHz	30-200 MHz	
COMMON MODE REJECTION RATIO	-45 DB MIN	-7+28*LOG ₁₀ (f/200) DB MIN	
	.75 OHMS MAX		
DC RESISTANCE, 1/2 WINDING	±.065 OHMS MAX (CENTER TAP SYMMETRY)		
DC RESISTANCE IMBALANCE	±.065 OHMS MAX (CENTER TAP SYMMETRY)		
DC CURRENT/VOLTAGE RATING - PSE PINS	600 mA, @ 57 V (CONTINUOUS)		
INPUT - OUTPUT ISOLATION	1500 VRMS MIN AT 60 SECONDS		

NOTES: f IS FREQUENCY IN MHZ.





WITH THE FOLLOWING
REFERENCE ONLY.

All rights reserved. Pulse confidential & proprietary. (08/27/18)

TLA DRAWING HX2326FNL-11	PS DRAWING PS-2005.002-F	SHEET 3 OF 3	PART NO. HX2326FNL	DATASHEET REV. A
SEELECTRONICS.COM(Asic)	PHONE:USA: 858 674 8100, GERMANY: 49 7032 78060, SINGAPORE: 65 6287 8998, SHANGHAI: 86 21 62787060, TAIWAN: 886 3 4356768			

Looking for pricing, stock, or lifecycle information?

Click below to explore more details on WIN SOURCE:

-  [View HX2326FNL](#) on WIN SOURCE
-  [Pulse Information](#)

Optimize Your Supply Chain with WIN SOURCE Solutions

-  Global Sourcing Solution
-  Obsolete Management
-  Cost Control Management
-  Shortage Management
-  Alternative Solution
-  Excess Inventory Management