



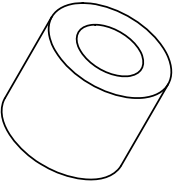
**THE DATASHEET OF
LMC_100_CTP**



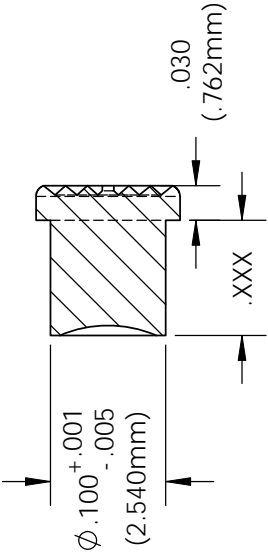
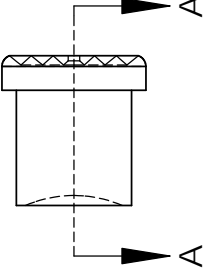
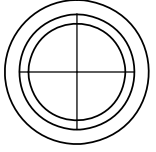
NOTES:

1. MOUNTING: Mounts in .102" (2.59mm)hole on 3/16" centers
2. Use Grommet Retainer RTN100 (sold seperately)
3. Custom lengths available upon request (Minimum order quantity may apply)
4. U.S. & Foreign Pat. Issued & Pend.

GROMMET RETAINER
(ORDER SEPERATELY)



RTN 100

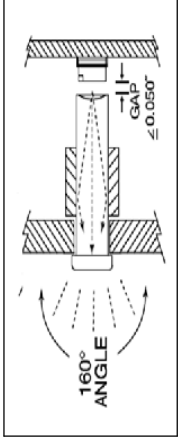


SECTION A-A

ORDERING CODE:

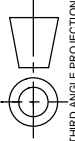
LMC XXX CTP

LENGTH CODE	COLOR
020 .200"	CTP CLEAR
040 .400"	
060 .600"	
080 .800"	
100 1.00"	
120 1.20"	



UNLESS OTHERWISE SPECIFIED
DIMENSIONS ARE IN INCHES:
ANGLES DECIMALS
 $\pm 1'$
XX $\pm .020$
XXX $\pm .010$
FINISH .XXX $\pm .005$

BREAK ALL CORNERS AND SHARP
EDGES 50% MAX



THIRD ANGLE PROJECTION

PROPRIETARY AND CONFIDENTIAL
THE INFORMATION CONTAINED IN THIS
DRAWING IS THE PROPERTY OF VISUAL
COMMUNICATIONS COMPANY, INC.
REPRODUCTION OR TRANSMISSION
WHOLE OR IN PART WITHOUT THE
WRITTEN PERMISSION OF VISUAL
COMMUNICATIONS COMPANY, INC.
IS PROHIBITED.

MATERIAL
ACRYLIC
UL 94-HB

FINISH

SEE NOTES

APPROVALS	DATE
DRAWN K.Howard	4/23/10
CHECKED DPZ	5/4/10

DO NOT SCALE DRAWING

VISUAL
190 Bossard
Phone (760) 51

TITLE:
2.5 M

SIZE
A

SCALE: 6:

5

4

3

2

Looking for pricing, stock, or lifecycle information?

Click below to explore more details on WIN SOURCE:

- ⊖ [View LMC_100_CTP](#) on WIN SOURCE
- ⊖ [Visual Communications Company - VCC](#) Information

Optimize Your Supply Chain with WIN SOURCE Solutions

- ✓ Global Sourcing Solution
- ✓ Obsolete Management
- ✓ Cost Control Management
- ✓ Shortage Management
- ✓ Alternative Solution
- ✓ Excess Inventory Management