



**THE DATASHEET OF  
TMM-134-01-S-D-RA-034**



# THROUGH-HOLE LOW PROFILE HEADER



(2.00 mm) .0787" PITCH • TMM SERIES

**TMM**  
**Board Mates:**  
 CLT, SQT, SQW, ESQT,  
 TLE, SMM, MMS  
**Cable Mates:**  
 TCSD

## SPECIFICATIONS

**Insulator Material:**  
 Black Liquid Crystal Polymer  
**Terminal Material:**  
 Phosphor Bronze  
**Plating:**  
 Sn or Au over  
 50 μ" (1.27 μm) Ni  
**Current Rating (SMM/TMM):**  
 3.2 A per row  
 (2 pins powered)  
**Operating Temp Range:**  
 -55 °C to +105 °C with Tin;  
 -55 °C to +125 °C with Gold  
**Voltage Rating:**  
 281 VAC mated with SQW;  
 250 VAC mated with SQT

## PROCESSING

**Lead-Free Solderable:**  
 Yes

## APPLICATION



Retention Clip Option (-RC)

## ALSO AVAILABLE

MOQ Required

Other Platings



**Note:**  
 Some lengths, styles and options are non-standard, non-returnable.

<b>TMM</b>	<b>1</b>	<b>NO. PINS PER ROW</b>	<b>LEAD STYLE</b>	<b>PLATING OPTION</b>	<b>ROW OPTION</b>	<b>OTHER OPTION</b>
------------	----------	-------------------------	-------------------	-----------------------	-------------------	---------------------

02 thru 50

Specify LEAD STYLE from chart

**-F**  
 = Gold flash on post, Matte Tin on tail

**-L**  
 = 10 μ" (0.25 μm) Gold on post, Matte Tin on tail

**-S**  
 = 30 μ" (0.76 μm) Gold on post, Matte Tin on tail

**-T**  
 = Matte Tin

**-S**  
 = Single Row

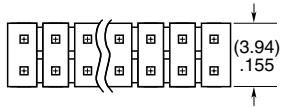
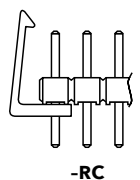
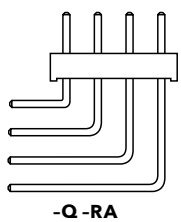
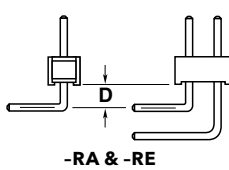
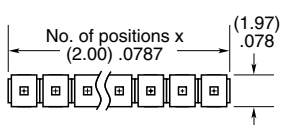
**-D**  
 = Double Row

**-Q**  
 = Four Row

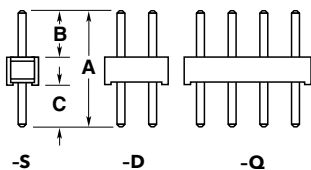
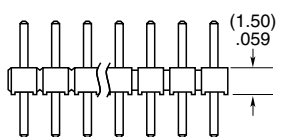
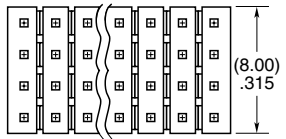
**-RA & -RE**  
 = Right-angle (Lead Style -01 only) (2 positions minimum, -Q row)

**-RC**  
 = Retention Clip (Mates with TCSD) (Double row only, 4 positions minimum, only available -06 lead style)

**"XXX"**  
 = Polarized Position (Specify position of omitted pin)



OPTION	D
-RA	(1.27) .050
-RE	(3.56) .140



LEAD STYLE	A	B	C
-01		(3.20) .126	(3.50) .138
-02	(8.20) .323	(3.70) .146	(3.00) .118
-03		(4.00) .158	(2.70) .106
-04	(5.69) .224	(1.91) .075	(2.29) .090
-05	(5.43) .214	(1.65) .065	
-06	(9.58) .377	(3.20) .126	(4.88) .192

## Looking for pricing, stock, or lifecycle information?

Click below to explore more details on WIN SOURCE:

- ⊖ [View TMM-134-01-S-D-RA-034 on WIN SOURCE](#)
- ⊖ [Samtec Inc. Information](#)

## Optimize Your Supply Chain with WIN SOURCE Solutions

- ✓ Global Sourcing Solution
- ✓ Obsolete Management
- ✓ Cost Control Management
- ✓ Shortage Management
- ✓ Alternative Solution
- ✓ Excess Inventory Management