

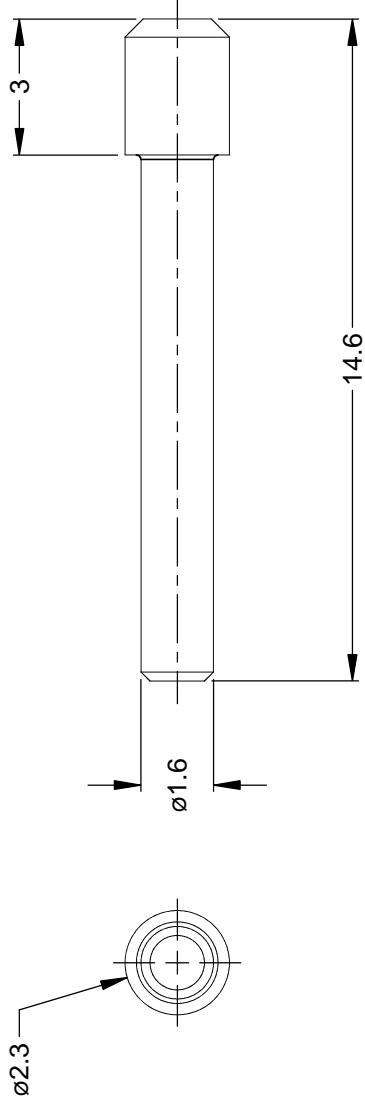


**THE DATASHEET OF
AT13-204-2005**




REVISION

REV	ECO	DESCRIPTION
A3	-	RELEASE NEW DWG FORM



NOTES: UNLESS OTHERWISE SPECIFIED

1. MATERIAL: THERMOPLASTIC; RoHS COMPLIANT
2. COLOR: WHITE
3. CONTACT SIZE: 20
4. USE WITH ATM SERIES CONNECTORS
5. ALL DIMENSIONS ARE FOR REFERENCE USE ONLY.

QUANTITY	PART NUMBER	DE
	AT13-204-2005	
MATERIALS LIST		
UNLESS OTHERWISE SPECIFIED	SIGNATURES	DATE
1) All dimensions are in metric(mm).	DRAWN: D.PARMS	06/AUG/13
2) Tolerances are as follows:	CHECKED:	
1 PL DEC ± 0.30 Fractions $\pm 1/64$	ENGINEER:	
2 PL DEC ± 0.15 Angles $\pm 1^\circ$	APPROVAL:	
3 PL DEC ± 0.08	CUSTOMER:	
3) Note reference = 	THIS DRAWING IS SUPPLIED FOR INFORMATION ONLY. DESIGN FEATURES, SPECIFICATIONS AND PERFORMANCE DATA SHOWN HEREON ARE THE PROPERTY OF THE APPLICABLE CORPORATION. NO RIGHTS OR PERMISSIONS ARE GRANTED. ALL DIMENSIONS ARE SUBJECT TO NORMAL MANUFACTURING VARIATIONS.	
MATERIAL SPECIFICATIONS:	SIZE TYPE	
PROCESS SPECIFICATIONS:	A C-	
NEXT ASSY:	SCALE: NONE	

A

Sin

Looking for pricing, stock, or lifecycle information?

Click below to explore more details on WIN SOURCE:

- ⊖ [View AT13-204-2005 on WIN SOURCE](#)
- ⊖ [Amphenol Sine Systems Corp Information](#)

Optimize Your Supply Chain with WIN SOURCE Solutions

- ✓ Global Sourcing Solution
- ✓ Obsolete Management
- ✓ Cost Control Management
- ✓ Shortage Management
- ✓ Alternative Solution
- ✓ Excess Inventory Management