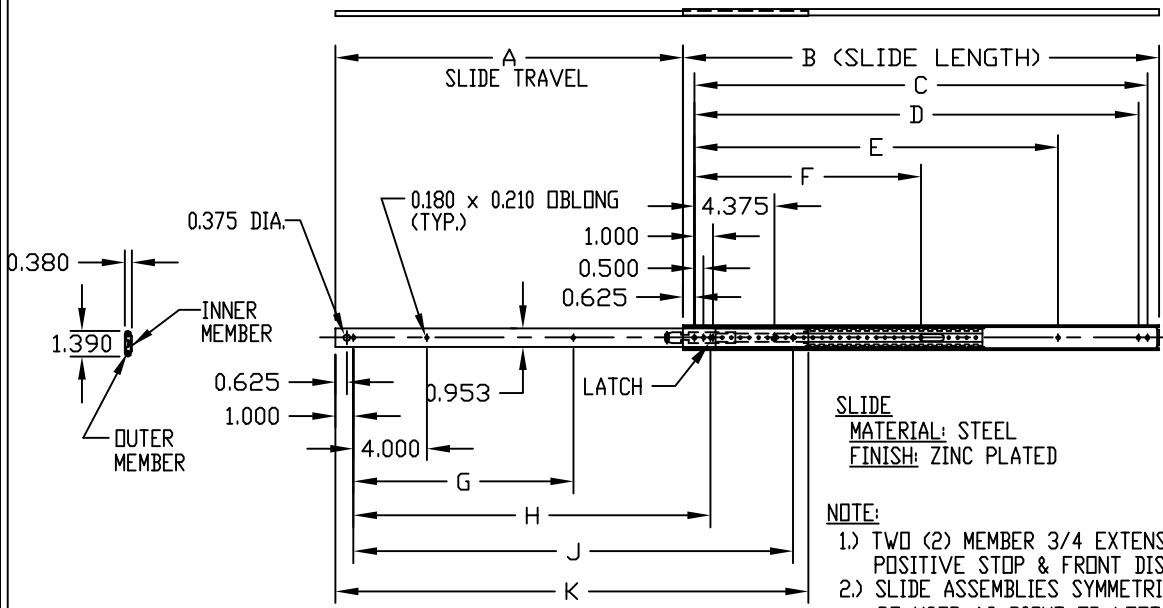




**THE DATASHEET OF
AS-5004-A**

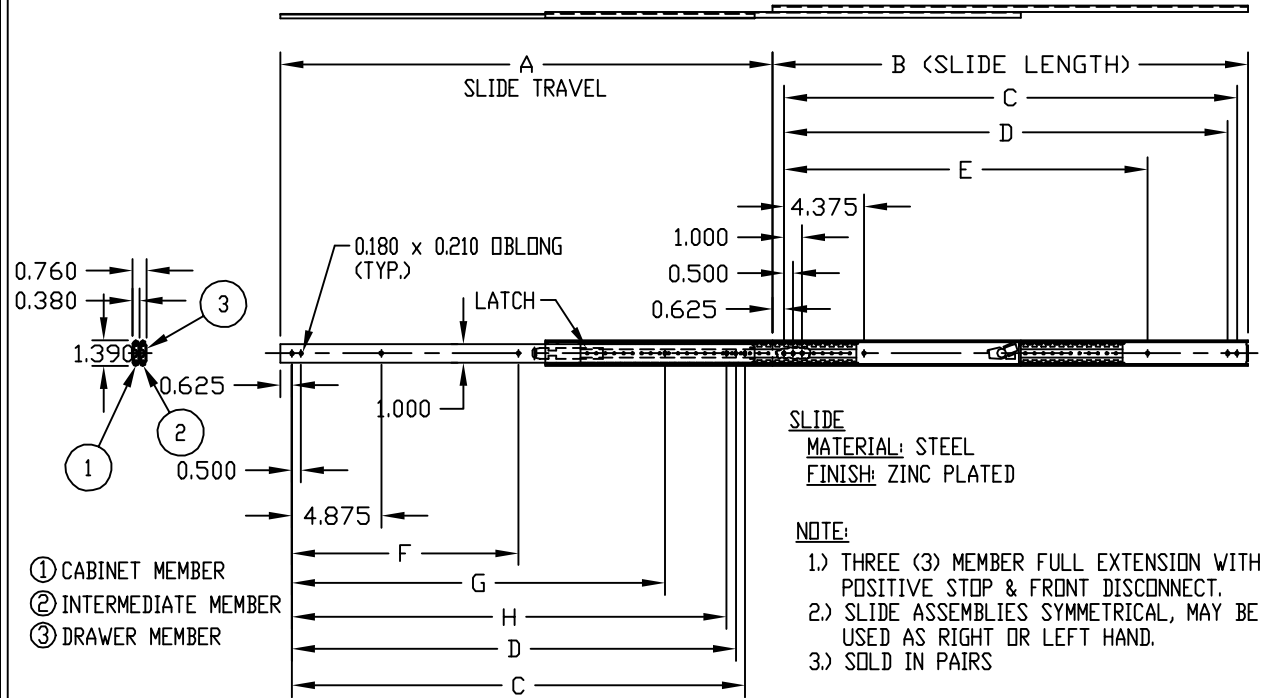




SLIDE
MATERIAL: STEEL
FINISH: ZINC PLATED

NOTE:
 1.) TWO (2) MEMBER 3/4 EXTENSION WITH POSITIVE STOP & FRONT DISCONNECT.
 2.) SLIDE ASSEMBLIES SYMMETRICAL, MAY BE USED AS RIGHT OR LEFT HAND.
 3.) SOLD IN PAIRS.

PART No.	A	B	C	D	E	F	G	H	J	K	LOAD RATING PER PAIR	WEIGHT PER PAIR
AS-5000-A	8.000	12.000	10.750	10.250	5.875	-----	-----	8.500	10.000	11.840	140 LBS.	1.3 LBS.
AS-5001-A	12.000	16.000	14.750	14.250	9.875	-----	-----	12.500	14.000	15.840	120 LBS.	1.7 LBS.
AS-5002-A	15.000	20.000	18.750	18.250	13.875	9.375	9.000	15.500	18.000	19.840	92 LBS.	2.3 LBS.
AS-5004-A	19.000	26.000	24.750	24.250	19.875	12.375	12.000	19.500	24.000	25.840	70 LBS.	2.9 LBS.



SLIDE
MATERIAL: STEEL
FINISH: ZINC PLATED

NOTE:
 1.) THREE (3) MEMBER FULL EXTENSION WITH POSITIVE STOP & FRONT DISCONNECT.
 2.) SLIDE ASSEMBLIES SYMMETRICAL, MAY BE USED AS RIGHT OR LEFT HAND.
 3.) SOLD IN PAIRS

PART No.	A	B	C	D	E	F	G	H	LOAD RATING/PR.	WEIGHT/PR.
AS-5042-A	20.880	20.000	18.750	18.250	13.875	9.375	14.375	17.750	91 LBS.	4.2 LBS.

Looking for pricing, stock, or lifecycle information?

Click below to explore more details on WIN SOURCE:

 [View AS-5004-A](#) on WIN SOURCE

 [Bud Industries](#) Information

Optimize Your Supply Chain with WIN SOURCE Solutions

-  Global Sourcing Solution
-  Obsolete Management
-  Cost Control Management
-  Shortage Management
-  Alternative Solution
-  Excess Inventory Management