



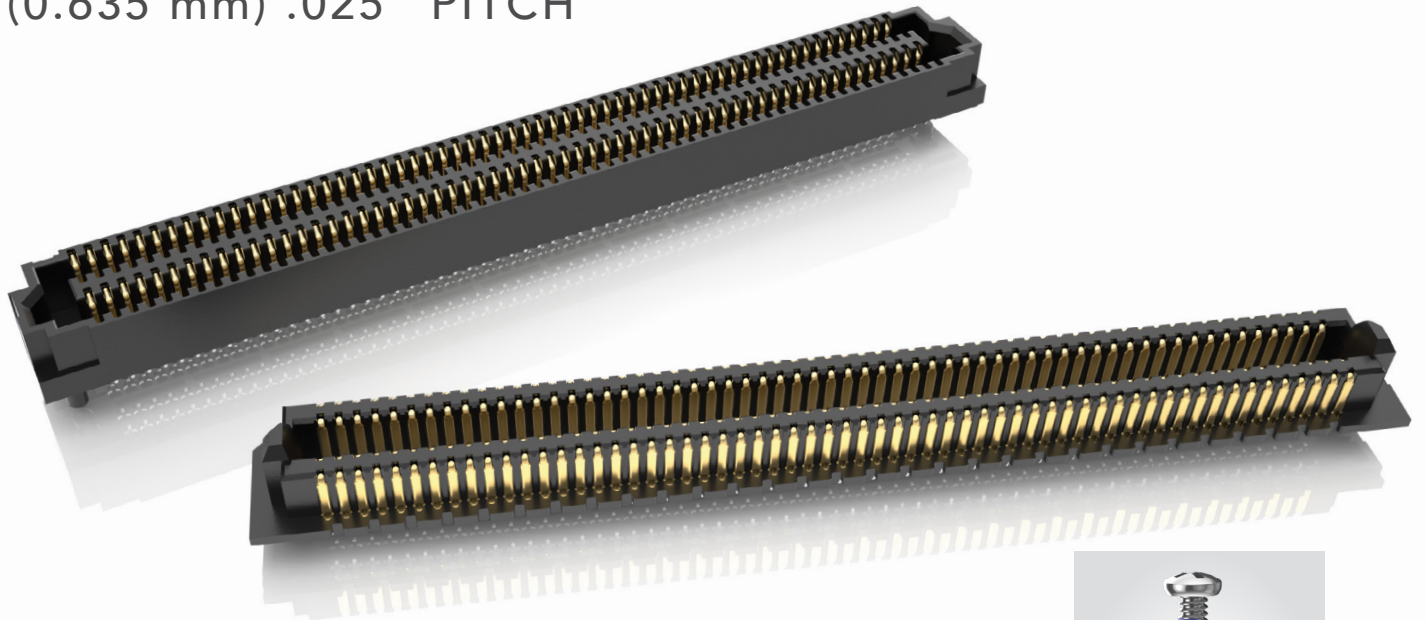
**THE DATASHEET OF  
ADF6-40-03.5-L-4-2-A-TR**



# ACCELERATE<sup>®</sup> HD

## HIGH-DENSITY SLIM BODY ARRAYS

(0.635 mm) .025" PITCH



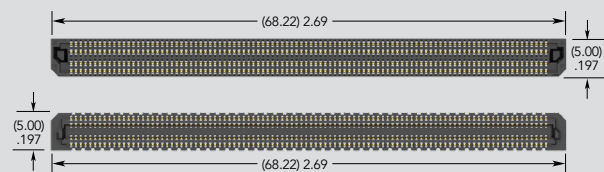
### FEATURES & BENEFITS

- Up to 400 positions in a 4-row design
- 5 mm, 7 mm, 9 mm, 10 mm, 11 mm, 12 mm, 14 mm & 16 mm stack heights
- Slim 5 mm width body design
- Edge Rate<sup>®</sup> contact system optimized for signal integrity performance
- Open-pin-field for grounding and routing flexibility
- Supports 64 Gbps PAM4 (32 Gbps NRZ) applications
- PCIe<sup>®</sup> 6.0/CXL<sup>™</sup> 3.1 capable



SureWare<sup>™</sup> ultra rugged guide post standoffs available (GPSO)

### HIGHER DENSITY THAN PREVIOUS GENERATION STRIPS



ADM6/ADF6 Series (400 total positions)

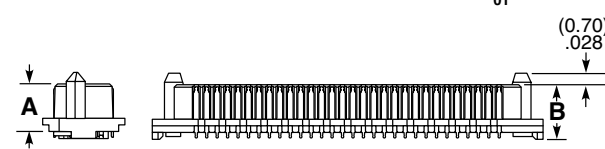
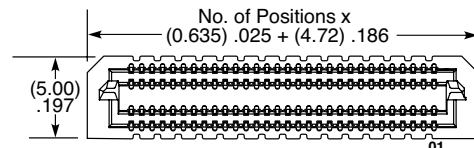
### KEY SPECIFICATIONS (ADM6/ADF6)

PITCH	TOTAL POSITIONS	INSULATOR MATERIAL	CONTACT MATERIAL	PLATING	OPERATING TEMP RANGE	CURRENT RATING	WORKING VOLTAGE	LEAD-FREE SOLDERABLE
(0.635 mm) .025"	40 - 400	Black LCP	Copper Alloy	Au or Sn over 50 μ" (1.27 μm) Ni	-55 °C to +125 °C	1.4 A per pin (4 pins powered)	155 VAC	Yes

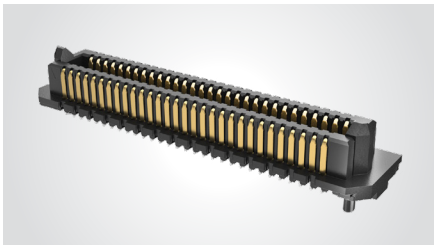
PCI-SIG<sup>®</sup>, PCI Express<sup>®</sup> and the PCIe<sup>®</sup> design marks are registered trademarks and/or service marks of PCI-SIG.

**(0.635 mm) .025" PITCH • SLIM BODY OPEN-PIN-FIELD ARRAYS**

SERIES	NO. OF POSITIONS	LEAD STYLE	PLATING OPTION	NO. OF ROWS	0	OPTION	"X"R
<b>ADM6</b> Terminal	<b>-10, -20,</b> <b>-30, -40,</b> <b>-50, -60,</b> (per row)	<b>-01.5</b> = 1.5 mm (ADM6 only)	<b>-L</b> = 10 μ" (0.25 μm) Gold on contact area, Matte Tin on tail	<b>-4</b> = Four Rows		(Leave blank for no alignment pin)	<b>-TR</b> = Tape & Reel
<b>ADF6</b> Socket	<b>-70, -80,</b> <b>-90, -100</b> (ADF6-03.5 & ADM6-01.5 lead styles only)	<b>-03.5</b> = 3.5 mm	<b>-S</b> = 30 μ" (0.76 μm) Gold on contact area, Matte Tin on tail			<b>-A</b> = Alignment Pin	<b>-FR</b> = Full Reel Tape & Reel (must order max. quantity per reel; contact Samtec for quantity breaks)
		<b>-06.5</b> = 6.5 mm (ADM6 only)	<b>-STL</b> = 30 μ" (0.76 μm) Gold on contact area, Tin/Lead on solder tail (ADM6 -01.5 lead style & ADF6 -03.5 lead style only)				
		<b>-07.5</b> = 7.5 mm (ADF6 only)					
		<b>-08.5</b> = 8.5 mm (ADM6 only)					



**ADM6**  
Board Mates:  
ADF6  
Standoffs:  
JSO, GPSO



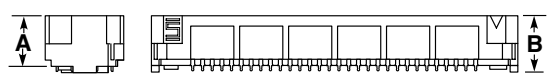
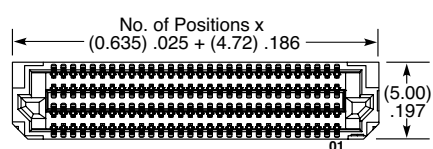
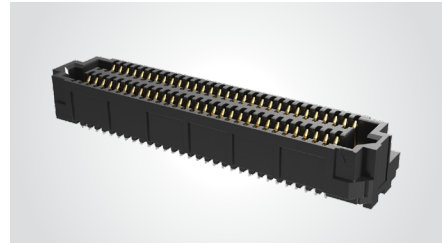
LEAD STYLE	A	B
-01.5	(2.90) .114	(3.32) .131
-03.5	(4.90) .193	(5.32) .209
-06.5	(7.90) .311	(8.32) .328
-08.5	(9.90) .390	(10.32) .406

View complete specifications at: [samtec.com?ADM6](http://samtec.com?ADM6)

MATED HEIGHTS *				
ADF6 LEAD STYLE	ADM6 LEAD STYLE			
	-01.5	-03.5	-06.5	-08.5
-03.5	(5 mm) .197"	(7 mm) .276"	(10 mm) .394"	(12 mm) .472"
-07.5	(9 mm) .354"	(11 mm) .433"	(14 mm) .551"	(16 mm) .630"

\* Processing conditions will affect mated height.

**ADF6**  
Board Mates:  
ADM6  
Standoffs:  
JSO, GPSO



LEAD STYLE	A	B
-03.5	(3.23) .127	(3.65) .144
-07.5	(7.23) .285	(7.65) .301

**Notes:**  
Some sizes, styles and options are non-standard, non-returnable

View complete specifications at: [samtec.com?ADF6](http://samtec.com?ADF6)

## Looking for pricing, stock, or lifecycle information?

Click below to explore more details on WIN SOURCE:

- ⊖ [View ADF6-40-03.5-L-4-2-A-TR on WIN SOURCE](#)
- ⊖ [Samtec Inc. Information](#)

## Optimize Your Supply Chain with WIN SOURCE Solutions

- ✓ Global Sourcing Solution
- ✓ Obsolete Management
- ✓ Cost Control Management
- ✓ Shortage Management
- ✓ Alternative Solution
- ✓ Excess Inventory Management