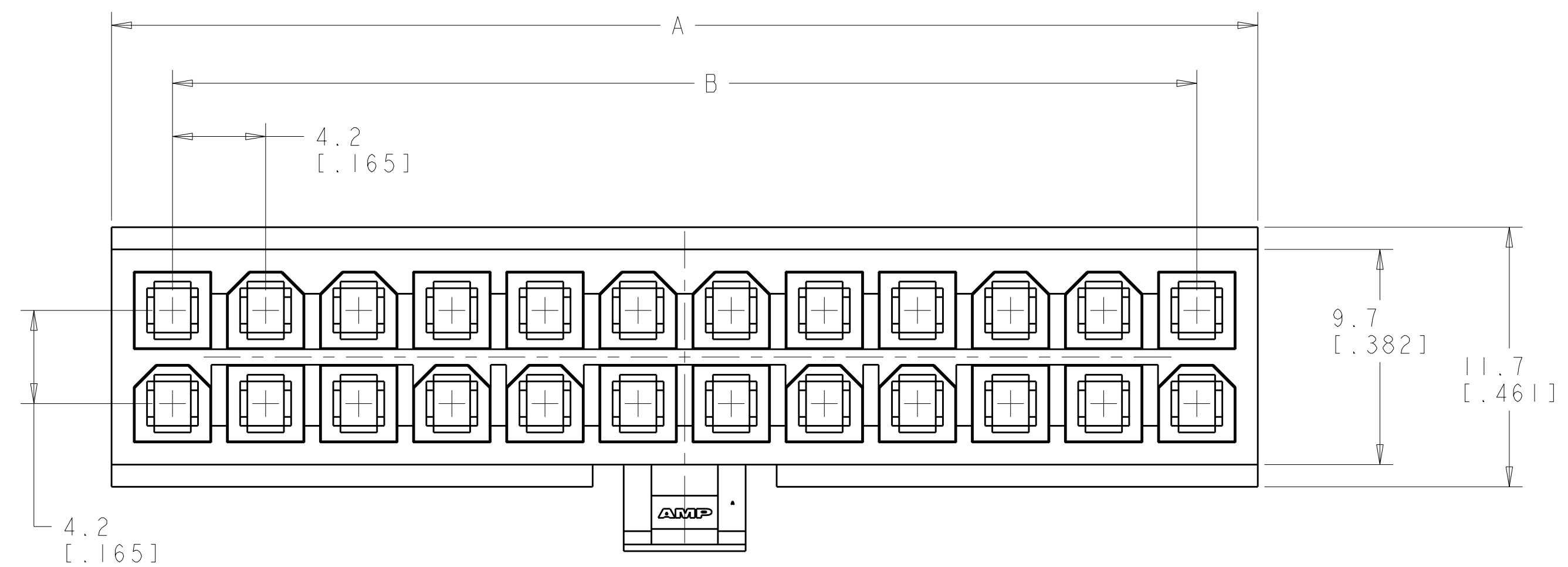




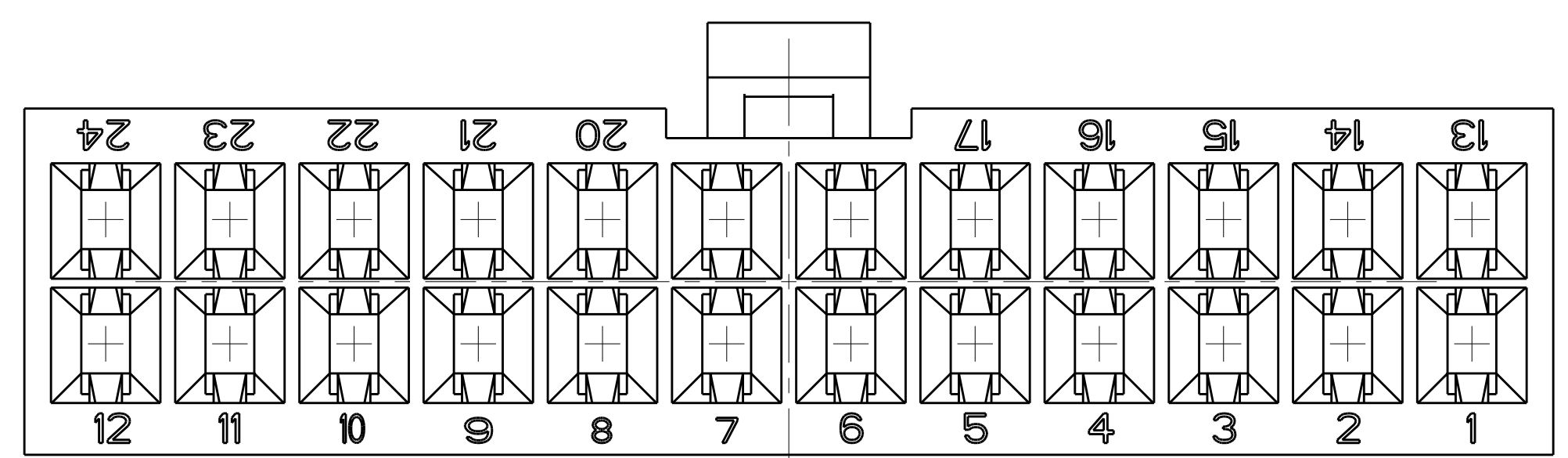
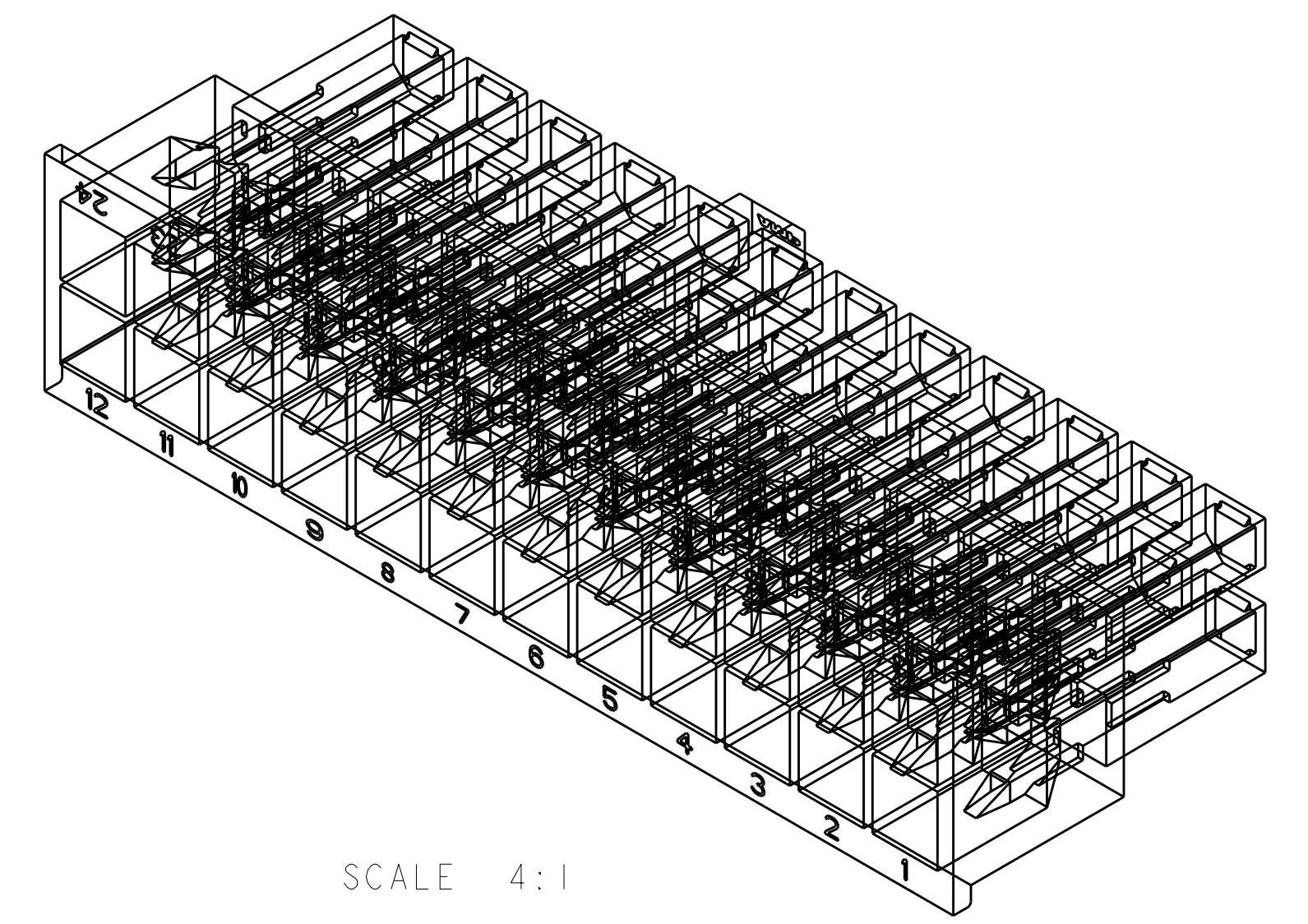
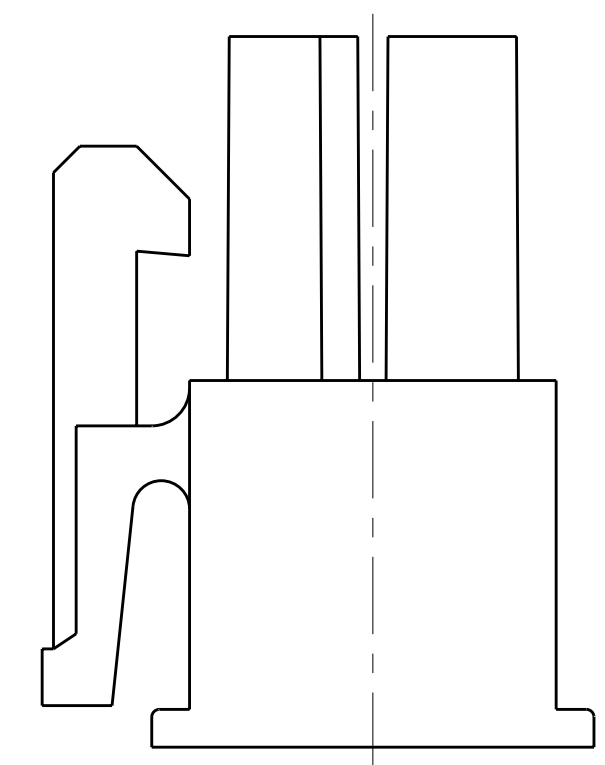
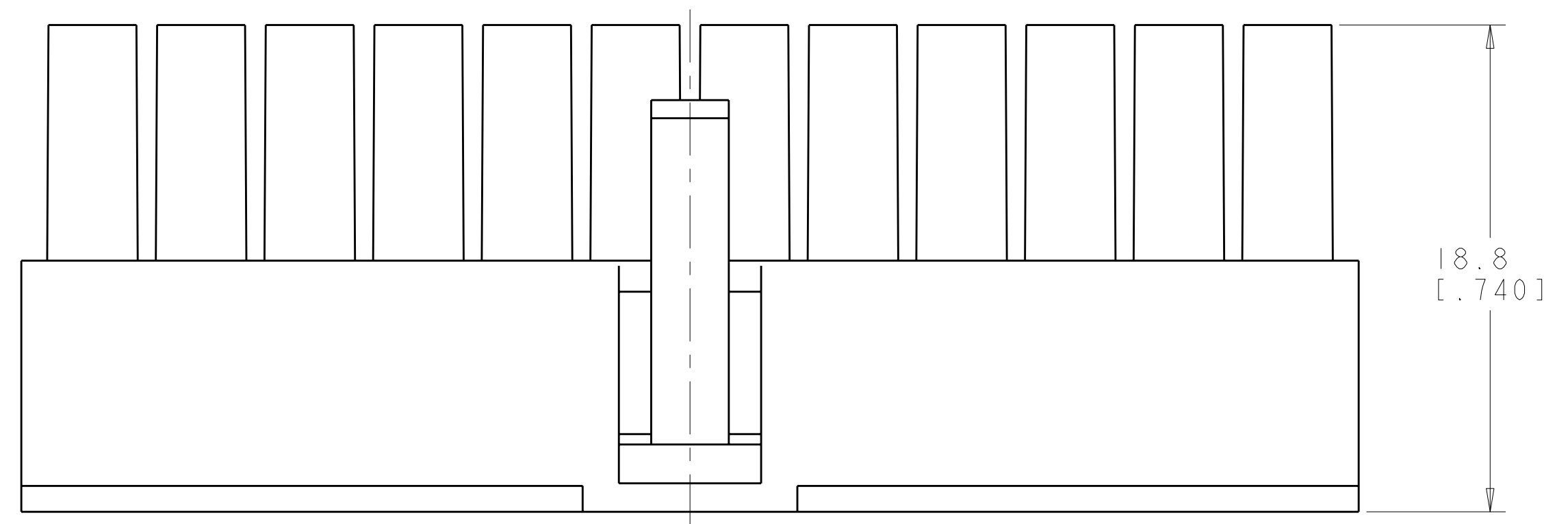
THE DATASHEET OF
794657-4



LOC	DIST	REVISIONS			
CM	00	REV	DATE	BY	APPD
		C1	REVISD PER ECO-11-005027	15MAR2011	RK HMR



- △ NYLON, UL94V-0, NATURAL.
- 2. DIMENSIONS IN BRACKETS ARE IN INCHES.
- 3. FEMALE CONTACTS MUST BE INSERTED SO THAT THE TOP OF THE WIRE AND INSULATION CRIMPS ARE FACING THE CIRCUIT NUMBER OF THE POSITION INTO WHICH IT IS BEING INSERTED OR 180° FROM THE CIRCUIT NUMBER FOR THAT POSITION.



4032.2	24	46.2[1.82]	51.7[2.04]	2-794657-4
3717.6	22	42[1.65]	47.5[1.87]	2-794657-2
3403	20	37.8[1.49]	43.3[1.71]	2-794657-0
3088.5	18	33.6[1.32]	39.1[1.54]	1-794657-8
2774	16	29.4[1.16]	34.9[1.37]	1-794657-6
2459.5	14	25.2[0.99]	30.7[1.21]	1-794657-4
2144.9	12	21[0.83]	26.5[1.04]	1-794657-2
1830.4	10	16.8[0.66]	22.3[0.88]	1-794657-0
1515.9	8	12.6[0.5]	18.1[0.71]	794657-8
1201.3	6	8.4[0.33]	13.9[0.55]	794657-6
886.8	4	4.2[0.17]	9.7[0.38]	794657-4
575.1	2	0[0]	5.5[0.22]	794657-2
VOLUME mm ³	NO OF POSITIONS	B	A±0.2[.01]	PART NUMBER

THIS DRAWING IS A CONTROLLED DOCUMENT. DWN: R. WHITAKER 27JUN2007
 CHK: C. CASH 27JUN2007
 APVD: C. CASH 27JUN2007

STE TE Connectivity

RECEPTACLE HOUSING, 2 TO 24 POSITION, AMP-DUAC(TM) POWER CONNECTOR


SIZE: CAGE CODE: DRAWING NO: A100779C=794657
 WEIGHT: -
 CUSTOMER DRAWING

SCALE: 4:1 SHEET 1 OF 1 REV: C1



Looking for pricing, stock, or lifecycle information?

Click below to explore more details on WIN SOURCE:

 [View 794657-4](#) on WIN SOURCE

 [TE Connectivity](#) Information

Optimize Your Supply Chain with WIN SOURCE Solutions

-  Global Sourcing Solution
-  Obsolete Management
-  Cost Control Management
-  Shortage Management
-  Alternative Solution
-  Excess Inventory Management