



**THE DATASHEET OF  
3SU10011AD600AA0**





Illuminated mushroom pushbutton, 22 mm, round, plastic, white, 30 mm, momentary contact type

|   |                                  |
|---|----------------------------------|
| <b>product brand name</b>                                 | SIRIUS ACT                       |
| <b>product designation</b>                                | Mushroom pushbuttons             |
| <b>design of the product</b>                              | Actuating/signaling element      |
| <b>product type designation</b>                           | 3SU1                             |
| <b>product line</b>                                       | Plastic, black, 22 mm            |
| <b>Enclosure</b>  |                                  |
| <b>number of command points</b>                           | 1                                |
| <b>Actuator</b>   |                                  |
| <b>design of the actuating element</b>                    | illuminated                      |
| <b>principle of operation of the actuating element</b>    | momentary contact type           |
| <b>product extension optional light source</b>            | Yes                              |
| <b>color of the actuating element</b>                     | white                            |
| <b>material of the actuating element</b>                  | plastic                          |
| <b>shape of the actuating element</b>                     | round                            |
| <b>outer diameter of the actuating element</b>            | 30 mm                            |
| <b>number of switching positions</b>                      | 2                                |
| <b>Front ring</b>   |                                  |
| <b>product component front ring</b>                       | Yes                              |
| <b>design of the front ring</b>                           | Standard                         |
| <b>material of the front ring</b>                         | plastic                          |
| <b>color of the front ring</b>                            | black                            |
| <b>General technical data</b>                             |                                  |
| <b>product function</b>                                   |                                  |
| • EMERGENCY OFF function                                  | No                               |
| • EMERGENCY STOP function                                 | No                               |
| <b>protection class IP</b>                                | IP66, IP67, IP69(IP69K)          |
| <b>degree of protection NEMA rating</b>                   | 1, 2, 3, 3R, 4, 4X, 12, 13       |
| <b>shock resistance</b>                                   |                                  |
| • according to IEC 60068-2-27                             | sinusoidal half-wave 15g / 11 ms |
| • for railway applications according to EN 61373          | Category 1, Class B              |
| <b>vibration resistance</b>                               |                                  |
| • according to IEC 60068-2-6                              | 10 ... 500 Hz: 5g                |
| • for railway applications according to EN 61373          | Category 1, Class B              |
| <b>operating frequency maximum</b>                        | 3 600 1/h                        |
| <b>mechanical service life (switching cycles) typical</b> | 3 000 000                        |
| <b>reference code according to IEC 81346-2</b>            | S                                |
| <b>Substance Prohibitance (Date)</b>                      | 10/01/2014                       |
| <b>Ambient conditions</b>                                 |                                  |
| <b>ambient temperature</b>                                |                                  |

- during operation
- during storage

-25 ... +70 °C

-40 ... +80 °C

environmental category during operation according to IEC 60721

3M6, 3S2, 3B2, 3C3, 3K6 (with relative air humidity of 10 ... 95%)

#### Installation/ mounting/ dimensions

|   |         |
|---|---------|
| height                                      | 30 mm   |
| width                                       | 30 mm   |
| shape of the installation opening           | round   |
| mounting diameter                           | 22.3 mm |
| positive tolerance of installation diameter | 0.4 mm  |
| mounting height                             | 27.5 mm |
| installation width                          | 30 mm   |
| installation depth                          | 24.4 mm |

#### Certificates/ approvals

General Product Approval

Declaration of Conformity



[Confirmation](#)



Test Certificates

Marine / Shipping

[Type Test Certificates/Test Report](#)

[Special Test Certificate](#)



Marine / Shipping

other



[Environmental Confirmations](#)

[Confirmation](#)

#### Further information

Information- and Downloadcenter (Catalogs, Brochures,...)

<https://www.siemens.com/ic10>

Industry Mall (Online ordering system)

<https://mall.industry.siemens.com/mall/en/en/Catalog/product?mlfb=3SU1001-1AD60-0AA0>

Cax online generator

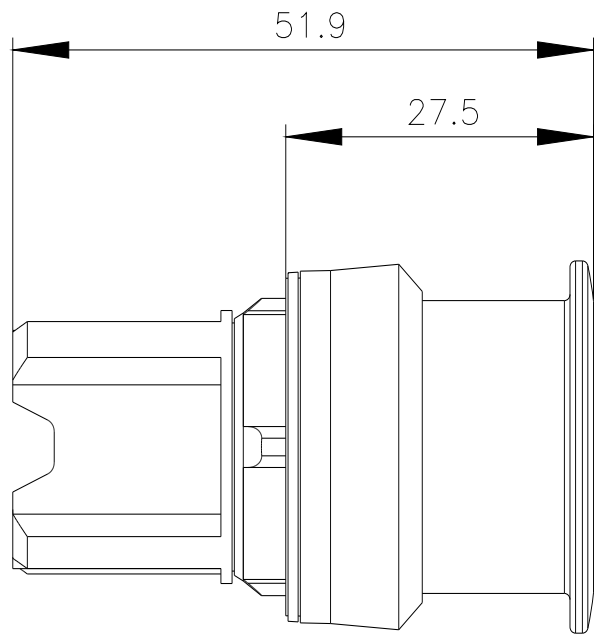
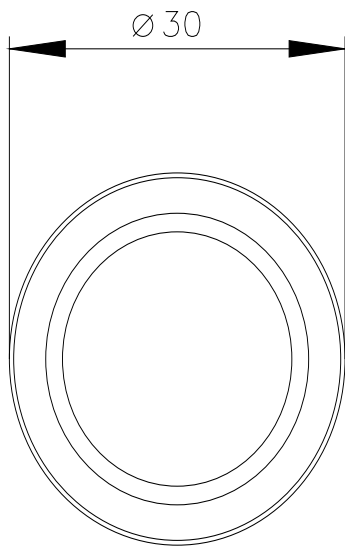
<http://support.automation.siemens.com/WW/CAXorder/default.aspx?lang=en&mlfb=3SU1001-1AD60-0AA0>

Service&Support (Manuals, Certificates, Characteristics, FAQs,...)

<https://support.industry.siemens.com/cs/ww/en/ps/3SU1001-1AD60-0AA0>

Image database (product images, 2D dimension drawings, 3D models, device circuit diagrams, EPLAN macros, ...)

[http://www.automation.siemens.com/bilddb/cax\\_de.aspx?mlfb=3SU1001-1AD60-0AA0&lang=en](http://www.automation.siemens.com/bilddb/cax_de.aspx?mlfb=3SU1001-1AD60-0AA0&lang=en)





last modified:

1/27/2022 

## Looking for pricing, stock, or lifecycle information?

Click below to explore more details on WIN SOURCE:

-  [View 3SU10011AD600AA0 on WIN SOURCE](#)
-  [Siemens Information](#)

## Optimize Your Supply Chain with WIN SOURCE Solutions

-  Global Sourcing Solution
-  Obsolete Management
-  Cost Control Management
-  Shortage Management
-  Alternative Solution
-  Excess Inventory Management