



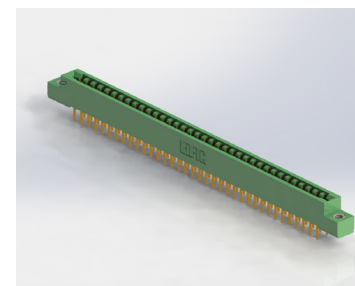
THE DATASHEET OF
357-020-454-178



Card Edge Connectors 0.156" (3.96mm) Pitch

Features:

- 0.156" (3.96mm) contact spacing by 0.200" (5.08mm) row spacing
- Accepts 0.062" (1.57mm) nominal thickness P.C. board
- Low profile insulator body, 0.473" (12.01mm)
- Contact termination options include P.C. tail, wire hole, wire wrap, 90° and extender board bends
- Single or dual row configurations
- Large variety of mounting options
- Accepts between contact and in-contact polarizing keys
- Pre-assembled card guides are available
- RoHS Compliant & UL Certified



Specifications:

| | |
|---------------------------------|--|
| Insulator Material | UL 94V-0 Thermoplastic Polyester |
| Contact Material | Copper Alloy |
| Contact Plating | Gold Plating on mating area and Tin Plating on tails with Nickel underplating all over |
| Current Rating | 5 amps |
| Contact Resistance | 10 milliohms maximum |
| Dielectric Withstanding Voltage | 1800 V AC rms at sea level between adjacent contacts |
| Insulation Resistance | 5000 megaohms minimum |
| Operating Temperature | -40°C to +105°C |
| Insertion Force | 16 oz (4.45 N) maximum per contact pair when tested with .070" (1.78mm) thick gauge |
| Withdrawal Force | 1 oz (0.28 N) minimum per contact pair when tested with .054" (1.37mm) thick gauge |

Example Part Number **307-044-520-202**



| | |
|----------------------------------|---|
| Series: | Insulator Color: |
| 307 | Thermoplastic Polyester, Green |
| 357 | Thermoplastic Polyester, Black |
| Total Number of Contacts: | Contact Rows: |
| 006, 007, 044 | Single Row |
| 012, 014, 088 | Dual Row |
| Contact Rows: | Description: |
| 1 | Single Row (Single Readout Flush Mounting Lugs) |
| 2 | Dual Row (Dual Readout Flush Mounting Lugs) |
| Mounting Options: | Description: |
| 01 | No Mounting Lug |
| 02 | Ø.128" (Ø3.25mm) Mounting Holes |
| 03 | Ø.116" (Ø2.95mm) I.D. Floating Eyelets |
| 04 | Ø.156" (Ø3.96mm) Mounting Holes |
| 07 | M3-0.5 Metric Threaded Inserts |
| 08 | #4-40 Unified Threaded Inserts |
| 12 | Ø.128" (Ø3.25mm) Side Mounting Holes |
| 58 | .468" (11.89mm) Offset Card Guides |
| 68 | .344" (8.74mm) Offset Card Guides |
| 78 | In-Line Card Guides |

| Contact Code: | Tail Description: | Tail Size: | Tail Length "G": |
|--|--|---------------------------|------------------|
| Single Row Contacts - Read One Side of Daughter Board | | | |
| 505 | Wire Hole | .087 x .013 (2.21 x 0.33) | .282 (7.16) |
| 525 | P.C. Tail | .046 x .013 (1.17 x 0.33) | .213 (5.41) |
| 527 | P.C. Tail | .046 x .013 (1.17 x 0.33) | .358 (9.09) |
| 531 | P.C. Tail | .023 x .013 (0.58 x 0.33) | .213 (5.41) |
| 545 | Wire Wrap | .046 x .013 (1.17 x 0.33) | .708 (17.98) |
| 547 | Wire Wrap | .046 x .013 (1.17 x 0.33) | .520 (13.21) |
| 558 | 90 DEGREE BEND (CODE 545 CONTACTS) | | |
| 559 | 90 DEGREE BEND (CODE 527 CONTACTS) | | |
| Single Row Contacts - Read Both Sides of Daughter Board | | | |
| 501 | Wire Hole | .089 x .014 (2.29 x 0.36) | .213 (5.41) |
| 521 | P.C. Tail | .046 x .014 (1.17 x 0.36) | .213 (5.41) |
| 541 | Wire Wrap | .046 x .014 (1.17 x 0.36) | .495 (12.57) |
| 553 | 90 DEGREE BEND (CODE 521 CONTACTS) | | |
| 554 | 90 DEGREE BEND (CODE 501 CONTACTS) | | |
| 557 | 90 DEGREE BEND (CODE 541 CONTACTS) | | |
| Dual Row Contacts - Read Both Sides of Daughter Board | | | |
| 500 | Wire Hole | .087 x .013 (2.21 x 0.33) | .282 (7.16) |
| 520 | P.C. Tail | .046 x .013 (1.17 x 0.33) | .213 (5.41) |
| 522 | P.C. Tail | .046 x .013 (1.17 x 0.33) | .358 (9.09) |
| 524 | P.C. Tail | .023 x .013 (0.58 x 0.33) | .213 (5.41) |
| 540 | Wire Wrap | .046 x .013 (1.17 x 0.33) | .708 (17.98) |
| 542 | Wire Wrap | .046 x .013 (1.17 x 0.33) | .520 (13.21) |
| 555 | .062 EXTENDER BOARD BEND (CODE 500 CONTACTS) | | |
| 556 | .062 EXTENDER BOARD BEND (CODE 520 CONTACTS) | | |
| 558 | 90 DEGREE BEND (CODE 522 AND 540 CONTACTS) | | |
| 559 | 90 DEGREE BEND (CODE 522 AND 540 CONTACTS) | | |
| 560 | .062 EXTENDER BOARD BEND (CODE 522 CONTACTS) | | |

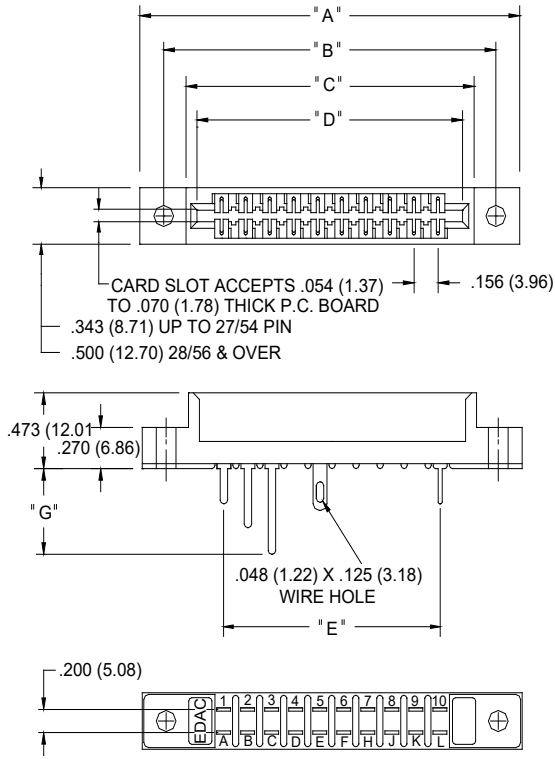
Ordering Code Notes:

- 1) All connector sizes up to 44 contacts single row / 88 contacts dual row are available upon request.
- 2) For contacts with overall tin plating, change the first digit of the contact code from 5 to 4
- 3) For details of the extender board and 90 degree bends refer to next pages.
- 4) For details of the mounting options refer to next pages.

307/357 SERIES



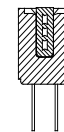
Card Edge Connectors 0.156" (3.96mm) Pitch



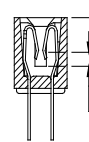
IN-CONTACT POLARIZING KEY
 P/N 307-240-328



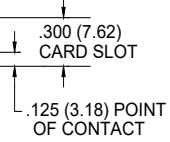
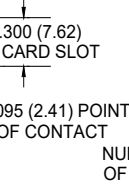
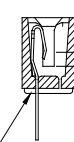
BETWEEN CONTACT POLARIZING KEY
 P/N 306-240-318



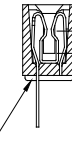
DUAL ROW CONTACTS



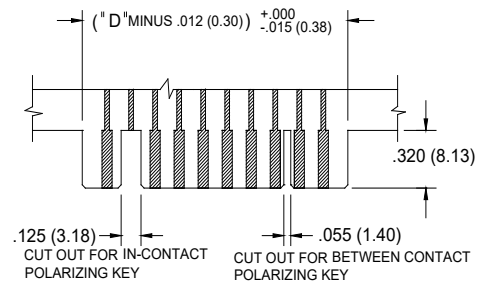
SINGLE ROW CONTACTS
 READ ONE SIDE OF DAUGHTER BOARD



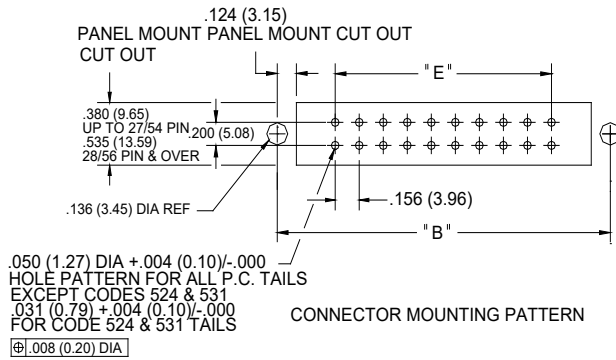
SINGLE ROW CONTACTS
 READ BOTH SIDES OF DAUGHTER BOARD



NUMBERED SIDE OF CONNECTOR



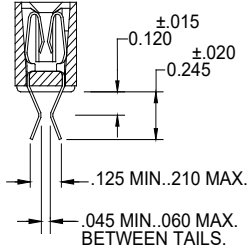
RECOMMENDED DAUGHTER BOARD



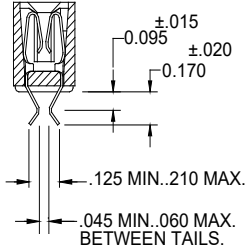
| NUMBER OF CONTACTS | | "A" | | "B" | | "C" | | "D" | | "E" | |
|--------------------|--------|-------|--------|-------|--------|-------|--------|-------|--------|-------|--------|
| Single | Double | Inch | mm | Inch | mm | Inch | mm | Inch | mm | Inch | mm |
| 6 | 12 | 1.842 | 46.79 | 1.532 | 38.91 | 1.246 | 31.65 | 1.100 | 27.94 | 0.780 | 19.81 |
| 8 | 16 | 2.154 | 54.71 | 1.844 | 46.84 | 1.558 | 39.57 | 1.412 | 35.86 | 1.092 | 27.74 |
| 10 | 20 | 2.466 | 62.64 | 2.156 | 54.76 | 1.870 | 47.50 | 1.724 | 43.79 | 1.404 | 35.66 |
| 12 | 24 | 2.778 | 70.56 | 2.468 | 62.69 | 2.182 | 55.42 | 2.036 | 51.71 | 1.716 | 43.59 |
| 15 | 30 | 3.246 | 82.45 | 2.936 | 74.57 | 2.650 | 67.31 | 2.504 | 63.60 | 2.184 | 55.47 |
| 18 | 36 | 3.714 | 94.34 | 3.404 | 86.46 | 3.118 | 79.20 | 2.972 | 75.49 | 2.652 | 67.36 |
| 20 | 40 | 4.026 | 102.26 | 3.716 | 94.39 | 3.430 | 87.12 | 3.284 | 83.41 | 2.964 | 75.29 |
| 22 | 44 | 4.338 | 110.19 | 4.028 | 102.31 | 3.742 | 95.05 | 3.596 | 91.34 | 3.276 | 83.21 |
| 25 | 50 | 4.806 | 122.07 | 4.496 | 114.20 | 4.210 | 106.93 | 4.064 | 103.23 | 3.744 | 95.10 |
| 28 | 56 | 5.274 | 133.96 | 4.964 | 126.09 | 4.678 | 118.82 | 4.532 | 115.11 | 4.212 | 106.98 |
| 30 | 60 | 5.586 | 141.88 | 5.276 | 134.01 | 4.990 | 126.75 | 4.844 | 123.04 | 4.524 | 114.91 |
| 36 | 72 | 6.522 | 165.66 | 6.212 | 157.78 | 5.926 | 150.52 | 5.780 | 146.81 | 5.460 | 138.68 |
| 43 | 86 | 7.614 | 193.40 | 7.304 | 185.52 | 7.018 | 178.26 | 6.872 | 174.55 | 6.552 | 166.42 |
| 44 | 88 | 7.770 | 197.36 | 7.460 | 189.48 | 7.174 | 182.22 | 7.028 | 178.51 | 6.708 | 170.38 |

Card Edge Connectors 0.156" (3.96mm) Pitch

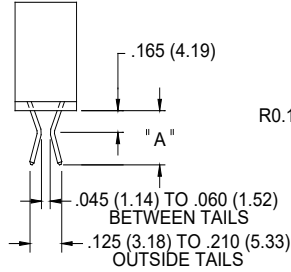
CONTACT
CODE 555



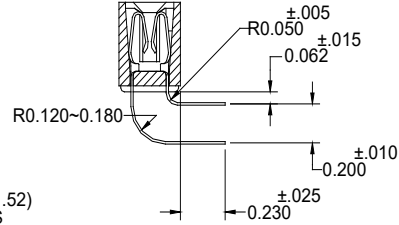
CONTACT
CODE 556



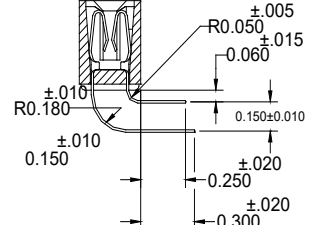
CONTACT
CODE 560



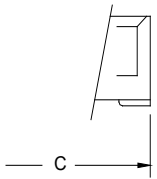
CONTACT
CODE 558



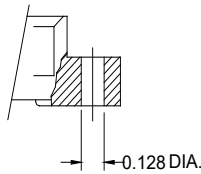
CONTACT
CODE 559



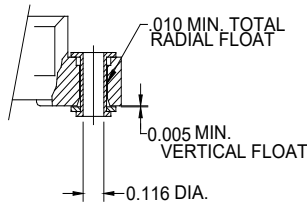
VARIATION 01
NO MOUNTING LUG



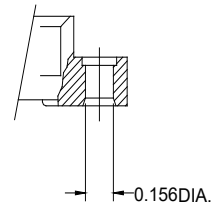
VARIATION 02
.128±.003 DIA. MOUNTING HOLE



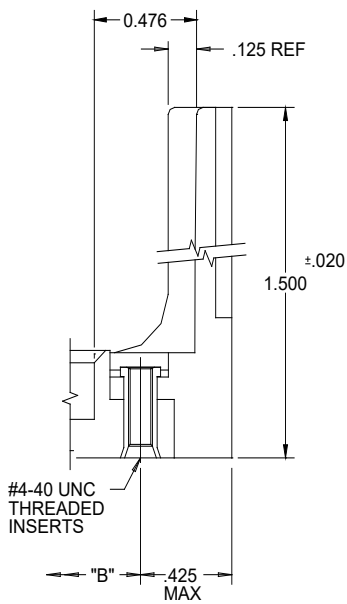
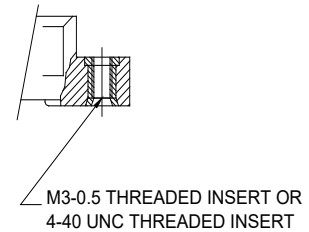
VARIATION 03
.116^{+0.003}_{-0.000} I.D. FLOATING EYELET



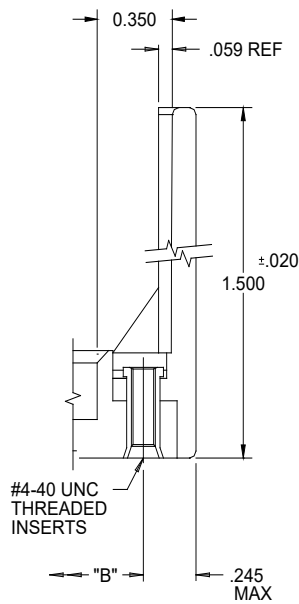
VARIATION 04
.156^{+0.002}_{-0.000} DIA. MOUNTING HOLE



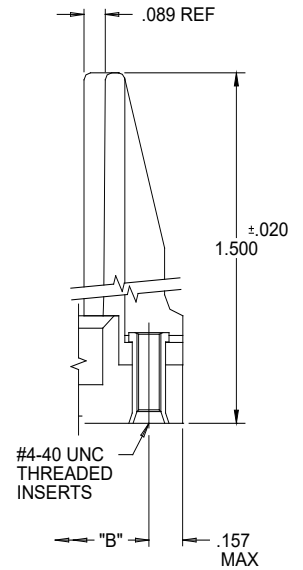
VARIATIONS 07 AND 08
THREADED INSERT



MOUNTING OPTION
CODE #58



MOUNTING OPTION
CODE #68



MOUNTING OPTION
CODE #78

Looking for pricing, stock, or lifecycle information?

Click below to explore more details on WIN SOURCE:

 [View 357-020-454-178 on WIN SOURCE](#)

 [EDAC Inc. Information](#)

Optimize Your Supply Chain with WIN SOURCE Solutions

-  Global Sourcing Solution
-  Obsolete Management
-  Cost Control Management
-  Shortage Management
-  Alternative Solution
-  Excess Inventory Management