



**THE DATASHEET OF**  
**345-022-525-612**



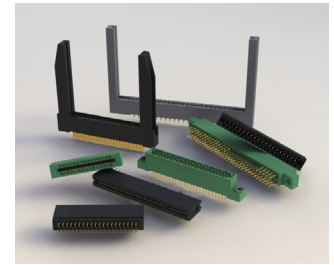
# 345/395 SERIES



## Card Edge Connectors 0.100" (2.54mm) Pitch

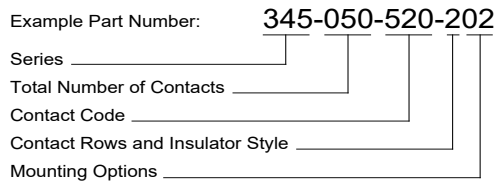
### Features:

- 0.100" (2.54mm) contact spacing x 0.200" (5.08mm) row spacing
- Accepts 0.062" (1.57mm) nominal thickness P.C. board
- High profile insulator body, 0.600" (15.24mm)
- Contact termination options include P.C. tail, wire wrap, 90 degree bends and extender board bends
- Single or dual row configurations
- Large variety of mounting options, flush or offset lugs
- Accepts between contact and in-contact polarizing keys
- Pre-assembled card guides are available
- Automatic wire wrap positioning holes
- RoHS Compliant & UL Certified



### Specifications:

|                                 |  |
|---------------------------------|--|
| Insulator Material              | UL 94V-0 Thermoplastic Polyester   |
| Contact Material                | Copper Alloy   |
| Contact Plating                 | Gold Plating on mating area and Tin Plating on tails with Nickel underplating all over |
| Current Rating                  | 3 amps   |
| Contact Resistance              | 10 milliohms maximum   |
| Dielectric Withstanding Voltage | 1200 V AC rms at sea level between adjacent contacts                                   |
| Insulation Resistance           | 5000 megaohms minimum  |
| Operating Temperature           | -40°C to +105°C  |
| Insertion Force                 | 16 oz (4.45 N) maximum per contact pair when tested with .070" (1.78mm) thick gauge    |
| Withdrawal Force                | 1 oz (0.28 N) minimum per contact pair when tested with .054" (1.37mm) thick gauge     |



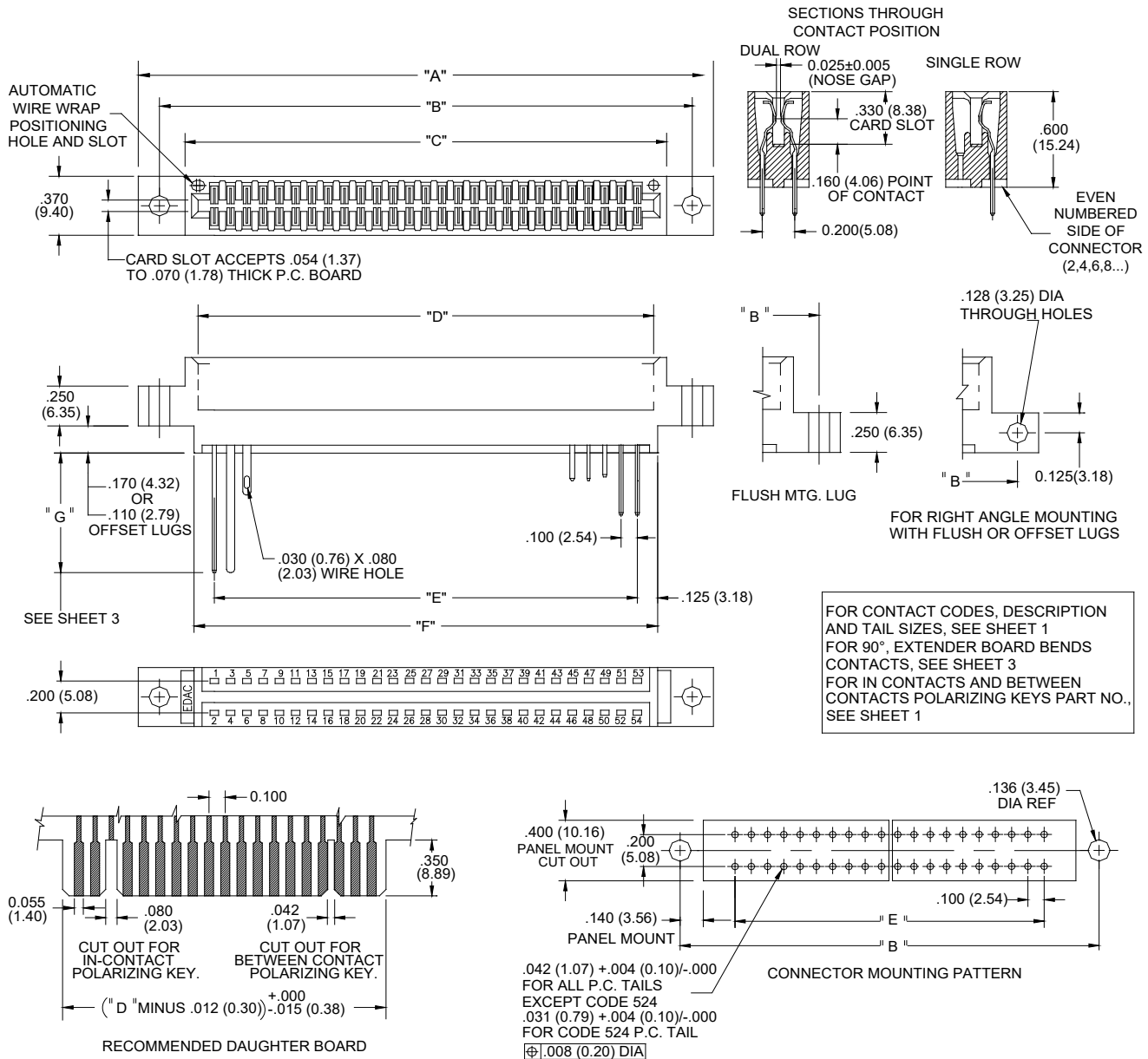
|                                  |                                |                         |
|----------------------------------|--------------------------------|-------------------------|
| <b>Series:</b>                   | <b>Insulator Color:</b>        |                         |
| 345                              | Thermoplastic Polyester, Green |                         |
| 395                              | Thermoplastic Polyester, Black |                         |
| <b>Total Number of Contacts:</b> | <b>Contact Rows:</b>           |                         |
| 005, 006, . . . 072              | Single Row                     |                         |
| 010, 012, . . . 144              | Dual Row                       |                         |
| <b>Insulator Style:</b>          | <b>Description:</b>            | <b>Insulator Style</b>  |
| 1                                | Single Row                     | Flush Mounting Lugs     |
| 2                                | Dual Row                       | Flush Mounting Lugs     |
| 4                                | Single Row                     | .110 (2.79) Offset Lugs |
| 5                                | Dual Row                       | .110 (2.79) Offset Lugs |
| 6                                | Single Row                     | .170 (4.32) Offset Lugs |
| 8                                | Dual Row                       | .170 (4.32) Offset Lugs |

- Ordering Code Notes:**
- 1) All connector sizes up to 72 contacts single row / 144 contacts dual row are available upon request.
  - 2) The 500 contact code is only available in the 345 series. Green Diallyl Phthalate insulator material will be supplied.
  - 3) For details of the extender board and 90 degree bends refer to next pages.
  - 4) For lug-less connectors, code 01 mounting, specify contact row code 1 or 2.
  - 5) For details of the mounting options refer to page 3 & page 4.

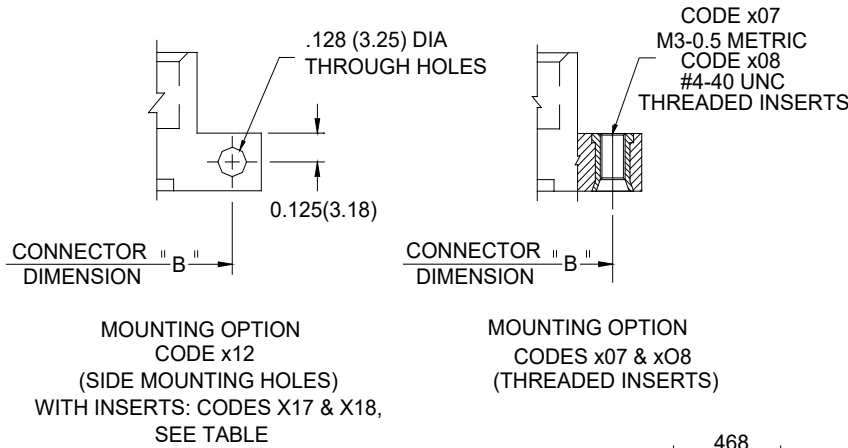
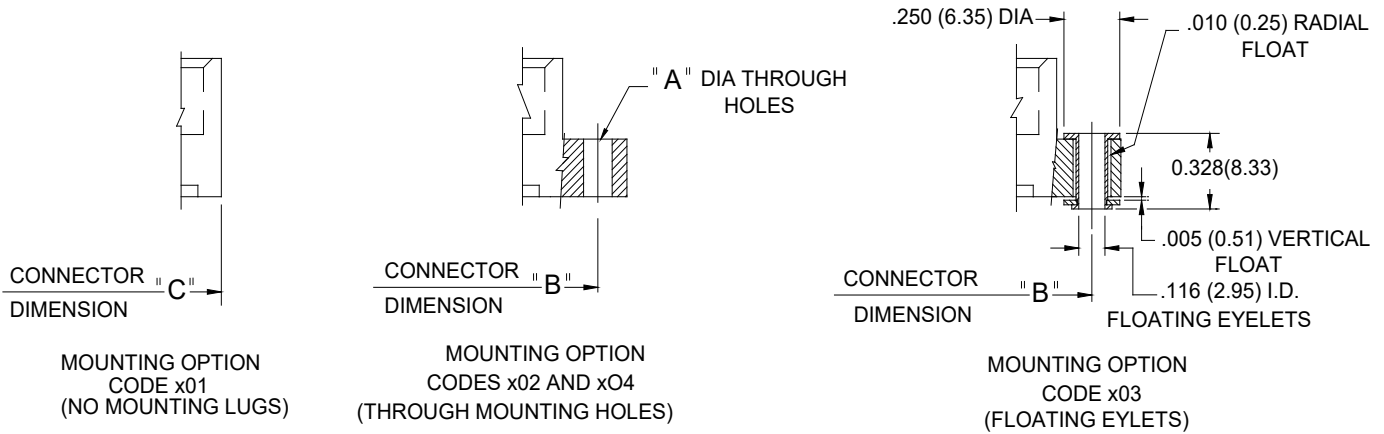
| Contact Code: | Tail Description:   | Tail Size:                | Tail Length "G": |
|---------------|---------------------|---------------------------|------------------|
| 500           | Wire Hole           | .050 x .025 (1.27 x 0.64) | .260 (6.60)      |
| 520           | P.C. Tail           | .030 x .018 (0.76 x 0.46) | .175 (4.45)      |
| 521           | P.C. Tail           | .025 Square (0.64 Square) | .150 (3.81)      |
| 523           | P.C. Tail           | .025 Square (0.64 Square) | .390 (9.91)      |
| 524           | P.C. Tail           | .018 Square (0.46 Square) | .175 (4.45)      |
| 525           | P.C. Tail           | .018 Square (0.46 Square) | .150 (3.81)      |
| 540           | Wire Wrap           | .025 Square (0.64 Square) | .560 (14.22)     |
| 541           | Wire Wrap           | .025 Square (0.64 Square) | .750 (19.05)     |
| 542           | Wire Wrap           | .025 Square (0.64 Square) | .645 (16.38)     |
| 544           | Wire Wrap           | .050 x .025 (1.27 x 0.64) | .750 (19.05)     |
| 555           | EXTENDER BOARD BEND | (CODE 500 CONTACTS)       |                  |
| 556           | EXTENDER BOARD BEND | (CODE 520 CONTACTS)       |                  |
| 558           | 90 DEGREE BEND      | (CODE 541 CONTACTS)       |                  |
| 559           | 90 DEGREE BEND      | (CODE 541 CONTACTS)       |                  |
| 560           | EXTENDER BOARD BEND | (CODE 523 CONTACTS)       |                  |

| Mounting Options: | Description:                              |
|-------------------|---|
| 01                | No Mounting Lug                           |
| 02                | Ø.128" (Ø3.25mm) Mounting Holes           |
| 03                | Ø.116" (Ø2.95mm) I.D. Floating Eyelets    |
| 04                | Ø.156" (Ø3.96mm) Mounting Holes           |
| 07                | M3-0.5 Metric Threaded Inserts            |
| 08                | #4-40 Unified Threaded Inserts            |
| 12                | Ø.128" (Ø3.25mm) Side Mounting Holes      |
| 58                | .468" (11.89mm) Offset Card Guides        |
| 78                | In-Line Card Guides 2.750" (69.85mm) Long |
| 88                | In-Line Card Guides 1.250" (31.75mm) Long |

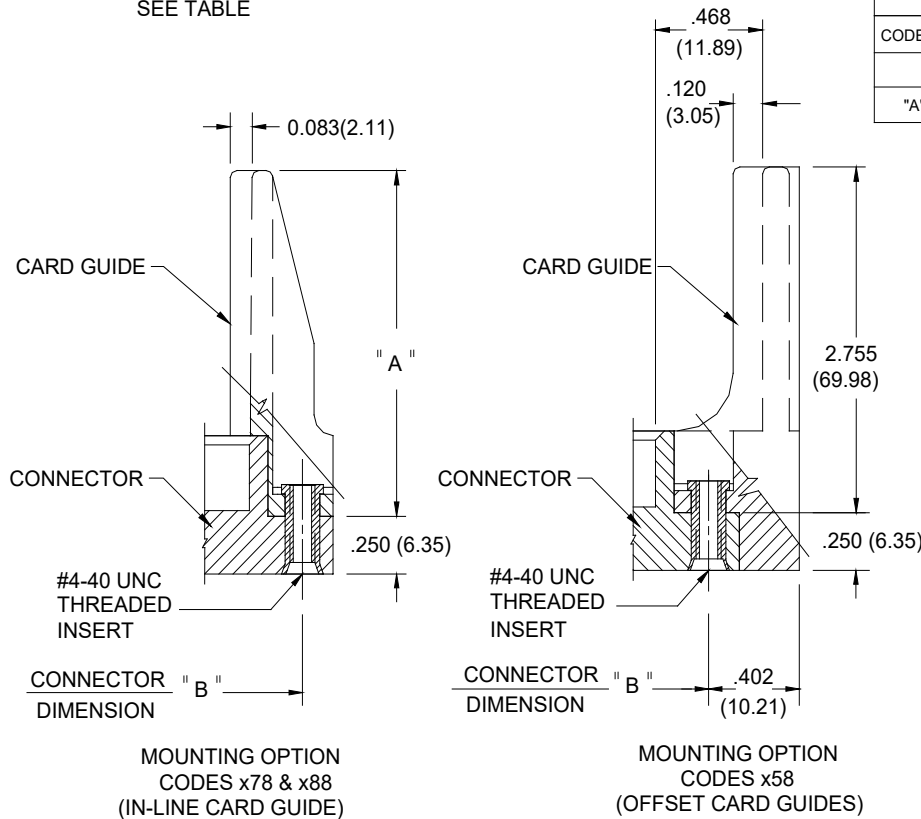
## Card Edge Connectors 0.100" (2.54mm) Pitch



| NUMBER OF CONTACTS |        | "A"±.015 (±0.38) |        | "B"±.010 (±0.25) |        | "C"±.015 (±0.38) |        | "D"±.010 /-.006 (+0.25/-0.15) |        | "E"±.005 (±0.13) |        |
|--------------------|--------|------------------|--------|------------------|--------|------------------|--------|-------------------------------|--------|------------------|--------|
| Single             | Double | Inch             | mm     | Inch             | mm     | Inch             | mm     | Inch                          | mm     | Inch             | mm     |
| 5                  | 10     | 1.335            | 33.91  | 1.075            | 27.31  | 0.760            | 19.30  | 0.600                         | 15.24  | 0.400            | 10.16  |
| 10                 | 20     | 1.835            | 46.61  | 1.575            | 40.01  | 1.260            | 32.00  | 1.100                         | 27.94  | 0.900            | 22.86  |
| 13                 | 26     | 2.135            | 54.23  | 1.875            | 47.63  | 1.560            | 39.62  | 1.400                         | 35.56  | 1.200            | 30.48  |
| 15                 | 30     | 2.335            | 59.31  | 2.075            | 52.71  | 1.760            | 44.70  | 1.600                         | 40.64  | 1.400            | 35.56  |
| 18                 | 36     | 2.635            | 66.93  | 2.375            | 60.33  | 2.060            | 52.32  | 1.900                         | 48.26  | 1.700            | 43.18  |
| 22                 | 44     | 3.035            | 77.09  | 2.775            | 70.49  | 2.460            | 62.48  | 2.300                         | 58.42  | 2.100            | 53.34  |
| 25                 | 50     | 3.335            | 84.71  | 3.075            | 78.11  | 2.760            | 70.10  | 2.600                         | 66.04  | 2.400            | 60.96  |
| 30                 | 60     | 3.835            | 97.41  | 3.575            | 90.81  | 3.260            | 82.80  | 3.100                         | 78.74  | 2.900            | 73.66  |
| 31                 | 62     | 3.935            | 99.95  | 3.675            | 93.35  | 3.360            | 85.34  | 3.200                         | 81.28  | 3.000            | 76.20  |
| 36                 | 72     | 4.435            | 112.65 | 4.175            | 106.05 | 3.860            | 98.04  | 3.700                         | 93.98  | 3.500            | 88.90  |
| 43                 | 86     | 5.135            | 130.43 | 4.875            | 123.83 | 4.560            | 115.82 | 4.400                         | 111.76 | 4.200            | 106.68 |
| 50                 | 100    | 5.835            | 148.21 | 5.575            | 141.61 | 5.260            | 133.60 | 5.100                         | 129.54 | 4.900            | 124.46 |
| 60                 | 120    | 6.835            | 173.61 | 6.575            | 167.01 | 6.260            | 159.00 | 6.100                         | 154.94 | 5.900            | 149.86 |
| 72                 | 144    | 8.035            | 204.09 | 7.775            | 197.49 | 7.460            | 189.48 | 7.300                         | 185.42 | 7.100            | 180.34 |



| CODE X02 AND X04- THROUGH MTG. HOLES   |                |              |
|--|----------------|--------------|
|  | CODE X02       | CODE X04     |
| "A" DIA.                               | 0.128(3.25)    | 0.156(3.96)  |
| CODE X07 AND X08- THREADED INSERTS     |                |              |
|  | CODE X07       | CODE X08     |
| INSERT                                 | M3-0.5(METRIC) | #4-40 UNC    |
| SIDE MOUNTING HOLES WITH INSERTS       |                |              |
|  | CODE X17       | CODE X18     |
| INSERT                                 | M3-0.5(METRIC) | #4-40 UNC    |
| CODES X78 AND X88- IN-LINE CARD GUIDES |                |              |
|  | CODE X78       | CODE X88     |
| "A"                                    | 2.750(69.85)   | 1.250(31.75) |



## Looking for pricing, stock, or lifecycle information?

Click below to explore more details on WIN SOURCE:

 [View 345-022-525-612 on WIN SOURCE](#)

 [EDAC Inc. Information](#)

## Optimize Your Supply Chain with WIN SOURCE Solutions

-  Global Sourcing Solution
-  Obsolete Management
-  Cost Control Management
-  Shortage Management
-  Alternative Solution
-  Excess Inventory Management