



THE DATASHEET OF
25WF010



VITREOUS FIXED WIREWOUND

Features:

- Vitreous enamel coating over steatite ceramic core with welded terminals

12 WATT

Value in Ohms	NTE Stock Number
10	12WF010
25	12WF025

Value in Ohms	NTE Stock Number
50	12WF050
100	12WF110

Value in Ohms	NTE Stock Number
250	12WF125
500	12WF150

Value in Ohms	NTE Stock Number
1K	12WF210
5K	12WF250

Value in Ohms	NTE Stock Number
10K	12WF310

25 WATT

Value in Ohms	NTE Stock Number
10	25WF010
25	25WF025

Value in Ohms	NTE Stock Number
50	25WF050
100	25WF110

Value in Ohms	NTE Stock Number
250	25WF125
500	25WF150

Value in Ohms	NTE Stock Number
1K	25WF210
5K	25WF250

Value in Ohms	NTE Stock Number
10K	25WF310

50 WATT

Value in Ohms	NTE Stock Number
10	50WF010
25	50WF025

Value in Ohms	NTE Stock Number
50	50WF050
100	50WF110

Value in Ohms	NTE Stock Number
250	50WF125
500	50WF150

Value in Ohms	NTE Stock Number
1K	50WF210
5K	50WF250

Value in Ohms	NTE Stock Number
10K	50WF310

100 WATT

Value in Ohms	NTE Stock Number
10	100WF010
25	100WF025

Value in Ohms	NTE Stock Number
50	100WF050
100	100WF110

Value in Ohms	NTE Stock Number
250	100WF125
500	100WF150

Value in Ohms	NTE Stock Number
1K	100WF210
5K	100WF250

Value in Ohms	NTE Stock Number
10K	100WF310

225 WATT

Value in Ohms	NTE Stock Number
10	225WF010
25	225WF025

Value in Ohms	NTE Stock Number
50	225WF050
100	225WF110

Value in Ohms	NTE Stock Number
250	225WF125
500	225WF150

Value in Ohms	NTE Stock Number
1K	225WF210
5K	225WF250

Value in Ohms	NTE Stock Number
10K	225WF310

SPECIFICATIONS

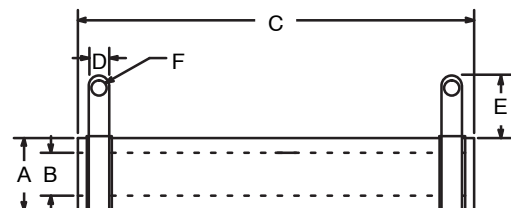
Electrical Characteristics

NTE Number	Resistance Range (Ohms)	Tolerance (%)	Voltage (Volts)	Operating Temperature (T _{opr})	Temperature Coefficient (PPM/°C)
All Wattages	10	5	1000 VAC	+375°C Max	±400
All Wattages	25 to 10K	5	1000 VAC	+375°C Max	±260

Mechanical* (inches (mm))



NTE Number	A Typical	B ±.032 (±0.8)	C ±.032 (±0.8)	D Typical	E Typical	F Typical
12WF Series	.310 (7.9)	.190 (4.8)	1.750 (44.5)	.190 (4.8)	.440 (11.2)	.104 (2.6)
25WF Series	.560 (14.2)	.310 (7.9)	2.000 (50.8)	.250 (6.4)	.560 (14.2)	.166 (4.2)
50WF Series	.560 (14.2)	.310 (7.9)	4.000 (102.0)	.250 (6.4)	.560 (14.2)	.166 (4.2)
100WF Series	.750 (19.0)	.500 (12.7)	6.500 (165.0)	.250 (6.4)	.560 (14.2)	.166 (4.2)
225WF Series	1.130 (28.7)	.750 (19.0)	10.500 (267.0)	.310 (7.9)	.630 (16.0)	.196 (5.0)

* These dimensions are for reference only, please consult the factory for actual size.









Looking for pricing, stock, or lifecycle information?

Click below to explore more details on WIN SOURCE:

-  [View 25WF010 on WIN SOURCE](#)
-  [NTE Information](#)

Optimize Your Supply Chain with WIN SOURCE Solutions

-  Global Sourcing Solution
-  Obsolete Management
-  Cost Control Management
-  Shortage Management
-  Alternative Solution
-  Excess Inventory Management