



THE DATASHEET OF 25WA010



VITREOUS ADJUSTABLE WIREWOUND

Features:

- Vitreous enamel coating over steatite ceramic core with welded terminals

12 WATT

| Value in Ohms | NTE Stock Number | Value in Ohms | NTE Stock Number | Value in Ohms | NTE Stock Number | Value in Ohms | NTE Stock Number |
|---------------|------------------|---------------|------------------|---------------|------------------|---------------|------------------|
| 10 | 12WA010 | 50 | 12WA050 | 250 | 12WA125 | 1K | 12WA210 |
| 25 | 12WA025 | 100 | 12WA110 | 500 | 12WA150 | | 5K |
| | | | | | | | 12WA250 |

25 WATT

| Value in Ohms | NTE Stock Number | Value in Ohms | NTE Stock Number | Value in Ohms | NTE Stock Number | Value in Ohms | NTE Stock Number |
|---------------|------------------|---------------|------------------|---------------|------------------|---------------|------------------|
| 10 | 25WA010 | 50 | 25WA050 | 250 | 25WA125 | 1K | 25WA210 |
| 25 | 25WA025 | 100 | 25WA110 | 500 | 25WA150 | 5K | 25WA250 |
| | | | | | | | 10K |
| | | | | | | | 25WA310 |

50 WATT

| Value in Ohms | NTE Stock Number | Value in Ohms | NTE Stock Number | Value in Ohms | NTE Stock Number | Value in Ohms | NTE Stock Number |
|---------------|------------------|---------------|------------------|---------------|------------------|---------------|------------------|
| 10 | 50WA010 | 50 | 50WA050 | 250 | 50WA125 | 1K | 50WA210 |
| 25 | 50WA025 | 100 | 50WA110 | 500 | 50WA150 | 5K | 50WA250 |
| | | | | | | | 10K |
| | | | | | | | 50WA310 |

100 WATT

| Value in Ohms | NTE Stock Number | Value in Ohms | NTE Stock Number | Value in Ohms | NTE Stock Number | Value in Ohms | NTE Stock Number |
|---------------|------------------|---------------|------------------|---------------|------------------|---------------|------------------|
| 10 | 100WA010 | 50 | 100WA050 | 250 | 100WA125 | 1K | 100WA210 |
| 25 | 100WA025 | 100 | 100WA110 | 500 | 100WA150 | 5K | 100WA250 |
| | | | | | | | 10K |
| | | | | | | | 100WA310 |

225 WATT

| Value in Ohms | NTE Stock Number | Value in Ohms | NTE Stock Number | Value in Ohms | NTE Stock Number | Value in Ohms | NTE Stock Number |
|---------------|------------------|---------------|------------------|---------------|------------------|---------------|------------------|
| 10 | 225WA010 | 50 | 225WA050 | 250 | 225WA125 | 1K | 225WA210 |
| 25 | 225WA025 | 100 | 225WA110 | 500 | 225WA150 | 5K | 225WA250 |
| | | | | | | | 10K |
| | | | | | | | 225WA310 |

SPECIFICATIONS

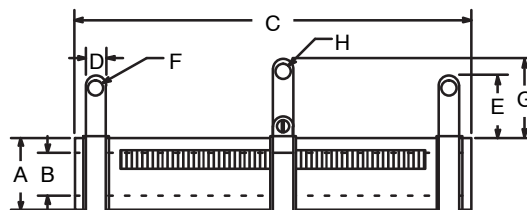
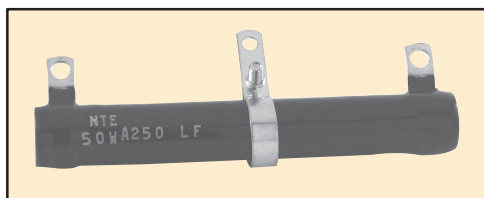
Electrical Characteristics

| NTE Number | Resistance Range (Ohms) | Tolerance (%) | Voltage (Volts) | Operating Temperature (T _{opr}) | Temperature Coefficient (PPM/°C) |
|--------------|-------------------------|---------------|-----------------|---|----------------------------------|
| All Wattages | 10 | 10 | 1000 VAC | +375°C Max | ±400 |
| All Wattages | 25 to 10K | 10 | 1000 VAC | +375°C Max | ±260 |

Mechanical* (inches (mm))



| NTE Number | A Typical | B ±.032 (±0.8) | C ±.032 (±0.8) | D ±.032 (±0.8) | E Typical | F Typical | G Typical | H Typical |
|--------------|--------------|-------------------|-------------------|-------------------|--------------|--------------|--------------|--------------|
| 12WA Series | .310 (7.9) | .190 (4.8) | 1.750 (44.5) | .190 (4.8) | .440 (11.2) | .100 (2.5) | .500 (12.7) | .100 (2.5) |
| 25WA Series | .560 (14.2) | .310 (7.9) | 2.000 (50.8) | .250 (6.4) | .560 (14.2) | .170 (4.3) | .690 (17.5) | .170 (4.3) |
| 50WA Series | .560 (14.2) | .310 (7.9) | 4.000 (102.0) | .250 (6.4) | .560 (14.2) | .170 (4.3) | .690 (17.5) | .170 (4.3) |
| 100WA Series | .750 (19.0) | .500 (12.7) | 6.500 (165.0) | .250 (6.4) | .560 (14.2) | .170 (4.3) | .690 (17.5) | .170 (4.3) |
| 225WA Series | 1.130 (28.7) | .750 (19.0) | 10.500 (267.0) | .310 (7.9) | .630 (16.0) | .200 (5.1) | .880 (22.4) | .170 (4.3) |

* These dimensions are for reference only, please consult the factory for actual size.






Looking for pricing, stock, or lifecycle information?

Click below to explore more details on WIN SOURCE:

-  [View 25WA010 on WIN SOURCE](#)
-  [NTE Information](#)

Optimize Your Supply Chain with WIN SOURCE Solutions

-  Global Sourcing Solution
-  Obsolete Management
-  Cost Control Management
-  Shortage Management
-  Alternative Solution
-  Excess Inventory Management