



THE DATASHEET OF
203-222-27211-1



REVISIONS
 AJ 29118
 REDRAWN.
 REVISED TRIP
 TIME IN TABLE
 1, SHEET 1
 JG 7-10-94

AK 311784
 ON SHEET 2
 REVISED NOTE D
 RC TB 9-2-97

AL 32515
 ON SHEET 2,
 REVISED V-A
 NOTE ON TABLE.
 RC EC 8-12-98

AM 33939
 ADDED LINKAGE
 NOTE 13 ON
 SHEET 1
 BH.CW.6/3/99

AN 33682
 REVISED NOTE
 D ON SHEET 5.
 RGS.EC.10/24/00

AP 41527
 *SUPPLEMENTARY
 PROTECTOR* WAS
 *CIRCUIT
 BREAKER* OR
 BREAKER IN
 ENTIRE AM-SPEC
 PAY.CH.5/13/05

1. THIS SPECIFICATION COVERS AIRPAX TYPE 203 MAGNETIC SUPPLEMENTARY PROTECTORS WITH INVERSE TIME DELAY, TRIP FREE AND ILLUMINATED HANDLE FEATURES.

2. DELAY TIME: SEE TABLE 1.
 3. RESISTANCE AND IMPEDANCE: SEE TABLE 2, SHEET 2.
 4. ELECTRICAL CHARACTERISTICS: CURRENT RATINGS FROM 20 MILLIAMPERES TO 20 AMPERES AT 32 VDC. 120 VAC 50/60 Hz AND 400 Hz FROM 20 MILLIAMPERES TO 10 AMPERES 50 VDC, 250 VAC 50/60 Hz AND 400 Hz.
 5. SHORT CIRCUIT RUPTURE CAPACITY: RELAY UNITS 5.0 AMPERE COIL RATING MAX.

AMPS	VOLTAGE	Hz	SHORT CIRCUIT	SERIES FUSE
.020 - 10	250V MAX.	50/60 Hz	2000A	40 MAX.
11 - 20	120V MAX.	50/60 Hz	2000A	80 MAX.
.050 - 10	50V MAX.	DC	1000A	NONE
.050 - 20	32V MAX.	DC	1000A	NONE
.020 - 10	250V MAX.	400 Hz	2000A	NONE
11 - 20	120V MAX.	400 Hz	2000A	NONE

6. HIGH-LOW TEMPERATURE OPERATION: OPERATE NORMALLY IN RANGE FROM -40°C TO +85°C.
 7. DIELECTRIC STRENGTH: WITHSTANDS 1500 VOLTS 60 Hz FOR 60 SECONDS BETWEEN ALL ELECTRICALLY ISOLATED TERMINALS, EXCEPT AUXILIARY SWITCH TERMINALS SHALL WITHSTAND 600 VOLTS 60 Hz.
 8. INSULATION RESISTANCE: SHALL NOT BE LESS THAN 100 MEGOHMS AT 500 VOLTS DC.
 9. ENDURANCE: OPERATING LIFE EXCEEDS 10,000 OPERATIONS WHEN OPERATED AS A SWITCH AT A RATE NOT TO EXCEED 6 OPERATIONS PER MINUTE (6,000 AT FULL RATED CURRENT, 4,000 WITHOUT POWER).
 10. PULSE TOLERANCE: WITHSTANDS WITHOUT TRIPPING A SINGLE PULSE OF 8 MILLISECONDS DURATION, HALF SINE WAVE CONFIGURATION AND A PEAK AMPLITUDE AS DESCRIBED BELOW

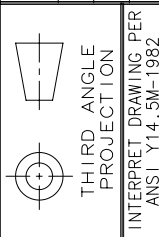
DELAY	PEAK AMPLITUDE	DELAY	PEAK AMPLITUDE
61, 62, 63, 71, 72	4 X RATED CURRENT	64, 65, 66	10 X RATED CURRENT
61F, 62F, 63F, 71F, 72F	6.5 X RATED CURRENT	64F, 65F, 66F	13 X RATED CURRENT

11. SHOCK: WITHSTANDS SHOCKS OF 100G OR MORE WITHOUT TRIPPING WHILE CARRYING FULL RATED CURRENT PER MIL-METHOD 213, TEST CONDITION 1. SUPPLEMENTARY PROTECTORS HAVING DELAY 1 ARE TESTED AT 90% OF RATED CURRENT (HANDLE DOWN). INSTANTANEOUS TYPES (DELAY 0 AND 9) ARE TESTED AT 80% OF RATED CURRENT IN ALL PLANES OF VIBRATION: TESTS ARE PERFORMED IN ACCORDANCE WITH MIL-STD 202, METHOD 204, TEST CONDITION A. TIME DURATION: SUPPLEMENTARY PROTECTORS WITHSTAND 10G WITHOUT TRIPPING WHILE CARRYING FULL RATED CURRENT. INSTANTANEOUS TYPES (DELAY 0 AND 9) ARE TESTED AT 80% OF RATED CURRENT.
 13. ANY LINKAGE USED TO ACTUATE A SUPPLEMENTARY PROTECTOR MUST ACCOMMODATE FULL, UNRESTRICTED HANDLE TRAVEL EXTREMES (ON-OFF, OFF-ON). IF NOT, OVERLOAD PROTECTION COULD BE COMPROMISED.



www.airpax.net

POWER PROTECTION PRODUCTS CAMBRIDGE, MD USA
 DRAWN J.G. APPROVED R.C.
 CHECKED R.C. DATE 9-23-70



INCH [MM]
 SCALE

TOLERANCE UNLESS NOTED
 INCH ± .015
 MM ± .38
 ANGLES ± 5°

A	B	C	D	E	F	G	H	J	K	L	M	N	P	R	S	U	V	Mx	T
---	---	---	---	---	---	---	---	---	---	---	---	---	---	---	---	---	---	----	---

TABLE 1

MINIMUM TRIP POINTS AND % OF RATED CURRENT			
DELAY	100%	125% *	200%
40-50-60	NO TRIP	.100 MAX.	.050 MAX.
49-59-69	1 HOUR		
41-51-61	NO TRIP	.2 - 7.0	.05 - .95
71	1 HOUR		.01
42-52-62	NO TRIP	3.0 - 60.0	.5 - 9.0
72	1 HOUR		.0
43-53-63	NO TRIP	25 - 450	3.0 - 30.0
	1 HOUR		.6
64	NO TRIP	.9 - 10.0	.2 - 1.7
	1 HOUR		.1
65	NO TRIP	9.0 - 60.0	1.15 - 7.0
	1 HOUR		.1
66	NO TRIP	30 - 130	4.0 - 18.0
	1 HOUR		.6

* 150% FOR DELAYS 40, 50, 60
 135% FOR DELAYS 41, 42, 43, 49, 71, 72, 79

NOTE: WHEN MEASURING TRIP TIMES, THE SUPPLEMENTARY PROTECTOR MUST BE ENERGIZED PRIOR TO APPLYING THE OVERLOAD CURRENT. THE SUPPLEMENTARY PROTECTOR POSITION AT AN AMBIENT TEMPERATURE OF 25°C

TYPE 203 SUPPLEMENTARY PROTECTOR
 MATERIAL

FINISH
 AM-328

REVISIONS
AJ 29118
AK 31784
AL 32515
AM 33930
AN 33682
AP 41527

Sensata Technology of

TABLE 2

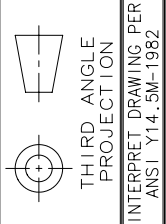
CURRENT RATING (AMPS)		DC RESISTANCE		60 Hz IMPEDANCE		400 Hz IMPEDANCE	
DELAYS 51, 52, 53, 71, 72		DELAYS 40, 50, 60		DELAYS 71, 72, 61, 62, 63, 69		DELAYS 64, 65, 41, 42, 43,	
.02	2700.00	675.00	2800.00	2550.00	4000.00	4000.00	
.05	470.00	105.00	480.00	440.00	650.00	650.00	
.50	4.30	1.00	4.40	4.50	5.30	5.30	
1.00	1.15	.230	1.17	1.10	1.40	1.40	
2.00	.298	.060	.310	.270	.360	.360	
3.00	.130	.033	.130	.104	.150	.150	
4.00	.081	.016	.081	.077	.092	.092	
5.00	.052	.012	.052	.050	.062	.062	
6.00	.034	.010	.034	.032	.040	.040	
7.00	.0275	.007	.0275	.026	.032	.032	
8.00	.020	.005	.020	.018	.023	.023	
9.00	.017	.004	.017	.014	.021	.021	
10.00	.016	.0038	.017	.012	.019	.019	
12.00	.008	.0034	.008	.009	.011	.011	
15.00	.006	.002	.006	.006	.008	.008	
20.00	.005	.002	.005	.005	.007	.007	

DCR AND IMPEDANCE VALUES ARE BASED ON MEASUREMENTS BY THE VOLTMETER AMMETER METHOD, RATED CURRENT APPLIED FOR ONE HOUR AND AT A VOLTAGE NOT LESS THAN 20 VOLTS.

TOLERANCE ±25%

CONSULT FACTORY FOR VALUES NOT SHOWN

AIRPAX
www.airpax.net
 POWER PROTECTION PRODUCTS CAMBRIDGE, MD USA
 DRAWN J.G. APPROVED R.C.
 CHECKED R.C. DATE 9-23-70



TOLERANCE UNLESS NOTED
 INCH ±.015
 MM ±.38
 ANGLES ±5°

TYPE 203 SUPPLEMENTARY
 MATERIAL
 FIN
 AM-328

SCALE

A	B	C	D	E	F	G	H	J	K	L	M	N	P	R	S	U	V	Mx	T
---	---	---	---	---	---	---	---	---	---	---	---	---	---	---	---	---	---	----	---

REVISIONS
AJ 29118
AK 31784
AL 32515
AM 33939
AN 33882
AP 41527

FIRST DECISION
TYPE
2039 ROCKER HANDLE UL/CSA CONSTRUCTION
293 ROCKER HANDLE NON UL/CSA CONSTRUCTION

THIRD DECISION
CONSTRUCTION
-1 SERIES
-2 AUXILIARY SWITCH (NOTE B)
-3 SHUNT
-4 RELAY (5 AMP. MAX. COIL RATING)
-5 SWITCH ONLY (NOTE G)
-6 CENTER TAP

FIFTH DEC.
CODE AMPER
-021 .02C
-051 .05C
-101 .100
-251 .25C
-501 .500
-751 .750
-102 1.000
-0 SWITCH

203-222-4-61-102-4-1-1

SECOND DECISION
POLES
-1 SINGLE POLE
-11 TWO POLE
-111 THREE POLE
-2 SINGLE POLE ILLUMINATED HANDLE
-22 TWO POLE ILLUMINATED HANDLE
-222 THREE POLE ILLUMINATED HANDLE

FOURTH DECISION (NOTE 15)
HERTZ AND DELAY
-0 SWITCH ONLY (NOTE G)
-40 400 Hz 0 DELAY (150% TRIP)
-41 400 Hz SHORT DELAY
-42 400 Hz LONG DELAY
-43 400 Hz MOTOR START DELAY
-49 400 Hz 0 DELAY (125% TRIP)
-50 DC 0 DELAY (150% TRIP)
-51 DC SHORT DELAY
-52 DC LONG DELAY
-53 DC MOTOR START DELAY
-59 DC 0 DELAY (125% TRIP)
-60 50/60 Hz 0 DELAY (150% TRIP)
-61 50/60 Hz SHORT DELAY
-62 50/60 Hz LONG DELAY
-63 50/60 Hz MOTOR START DELAY
-64 50/60 Hz HIGH PULSE TOLERANT SHORT DELAY
-65 50/60 Hz HIGH PULSE TOLERANT LONG DELAY
-66 50/60 Hz HIGH PULSE TOLERANT MOTOR START DELAY
-69 50/60 Hz 0 DELAY (125% TRIP)
-71 MULTI-FREQUENCY SHORT DELAY
-72 MULTI-FREQUENCY LONG DELAY

SIXTH DECISION
HANDLE COLOR
(SEE SHEET 4)

SEVENTH
BODY
(SEE SHEET 5)

NOTES

1. FOR OPTIONAL FLUSH HANDLE LETTER "A" AFTER THE LETTER "A" AFTER THE LETTER "A"
2. SEE SHEET 5 FOR REFERENCE
3. AN "F" AFTER DELAY D TO SPECIFIED TIME DELAY

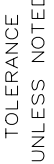


www.airpax.net
CAMBRIDGE, MD USA

POWER PROTECTION PRODUCTS
DRAWN J.G. APPROVED R.C.
CHECKED R.C. DATE 9-23-70



THIRD ANGLE PROJECTION
ANSI Y14.5M-1982



TOLERANCE UNLESS NOTED
INCH ± .015
MM ± .38
ANGLES ± 5°

INCH [MM]
SCALE

TYPE 203 SUPPLEMENTARY

MATERIAL
FIN

AM-328

A	B	C	D	E	F	G	H	J	K	L	M	N	P	R	S	U	V	Mx	T
---	---	---	---	---	---	---	---	---	---	---	---	---	---	---	---	---	---	----	---

REVISIONS

AJ	29118
AK	31784
AL	32515
AM	33939
AN	33682
AP	41527

Sensata Technology

SIXTH DECISION		SEVENTH DECISION	
CODE	HANDLE COLOR	BODY COLOR	ILLUMINATION
1	WHITE - TRANSLUCENT, INCANDESCENT OR NEON ILLUMINATED	1	BLACK
2	WHITE - LED ILLUMINATED	2	WHITE
3	BLACK - LED ILLUMINATED	3	GREY
4	RED - LED ILLUMINATED		
5	WHITE - TRANSLUCENT, INCANDESCENT OR NEON ILLUMINATED		
6	WHITE - LED ILLUMINATED		
7	BLACK - LED ILLUMINATED		
8	RED - LED ILLUMINATED		
A			FIG. 4
B			FIG. 2
C	WHITE - TRANSLUCENT, INCANDESCENT OR NEON ILLUMINATED		FIG. 5
D			UNMARKED
E			FIG. 3
F			FIG. 6
G			FIG. 4
H			FIG. 2
J	WHITE		FIG. 5
K			UNMARKED
L			FIG. 3
M			FIG. 6
N			FIG. 4
P			FIG. 2
Q	BLACK		FIG. 5
R			UNMARKED
S			FIG. 3
T			FIG. 6
U			FIG. 4
V	RED		FIG. 2
W			FIG. 5
X			UNMARKED
Y			FIG. 3
Z			FIG. 6

DECISIONS G - Z WILL BE NON ILLUMINATED UNLESS TABLE 8 IS COMPLETED BY CUSTOMER.

SEVENTH DECISION	
BODY COLOR	ILLUMINATION
1	BLACK
2	WHITE
3	GREY

FIG. 1

- 1 NEON - 120 OR 250 VDC (NOTE)
- 2 INCANDESCENT 3 -
- 3 INCANDESCENT 6 -
- 4 LED (NOTE D) RED
- 5 LED 4 - 8 VDC (NOTE)
- 6 LED 8 - 16 VDC (NOTE)
- 7 LED 16 - 24 VDC (NOTE)
- 8 LED 24 - 32 VDC (NOTE)
- 9 LED 6.3 VAC (NOTE)
- 10 LED 12.6 VAC (NOTE)
- 13 NEON - 120 OR 250 VDC (NOTE)
- 14 LED (NOTE D) GREEN
- 15 LED 4 - 8 VDC (NOTE)
- 16 LED 8 - 16 VDC (NOTE)
- 17 LED 16 - 24 VDC (NOTE)
- 18 LED 24 - 32 VDC (NOTE)
- 19 LED 6.3 VAC (NOTE)
- 20 LED 12.6 VAC (NOTE)
- 21 INCANDESCENT 3 -
- 22 INCANDESCENT 3 -
- 23 INCANDESCENT 3 -
- 24 INCANDESCENT 3 -
- 25 INCANDESCENT 3 -
- 31 INCANDESCENT 6 -
- 32 INCANDESCENT 6 -
- 33 INCANDESCENT 6 -
- 34 INCANDESCENT 6 -
- 35 INCANDESCENT 6 -

SEE NOTE F FOR ALL

SEE SHEET 5 FOR

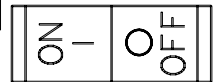
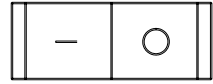
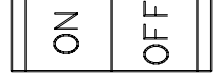


FIG. 4

FIG. 1 FIG. 2 FIG. 3

HANDLE MARK

ARPAX
www.airpax.net
 CAMBRIDGE, MD USA

POWER PROTECTION PRODUCTS
 DRAWN J.G. APPROVED R.C. DATE 9-23-70

CHECKED R.C. DATE 9-23-70

THIRD ANGLE PROJECTION
 INTERPRET DRAWING PER ANSI Y14.5M-1982

INCH [MM]

TOLERANCE UNLESS NOTED	
INCH	± .015
MM	± .38
ANGLES	± 5°
SCALE	

TYPE 203 SUPPLEMENTARY MATERIAL FINI

AM-328

A	B	C	D	E	F	G	H	J	K	L	M	N	P	R	S	U	V	Mx	T
---	---	---	---	---	---	---	---	---	---	---	---	---	---	---	---	---	---	----	---

REVISIONS
AJ 29118
AK 31784
AL 32515
AM 33939
AN 33682
AP 41527

Sensata Technology of
Sensata Technologies

NOTES:

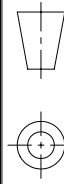
- A. NORMAL CURRENT VALUES FOR 100% OF RATED CURRENT ARE THOSE LISTED. OTHER VALUES CAN BE OBTAINED WITHOUT DELAYED DELIVERY.
- B. BECAUSE OF SPACE LIMITATIONS, A SINGLE POLE AUXILIARY SWITCH ILLUMINATED HANDLE (203-120) IS REQUIRED FOR LAMP CONNECTIONS. THESE LEADS EXIT THE CASE ON THE BOTTOM ADJACENT TO THE LAMP CONNECTIONS.
- C. A NEON BULB IS PROVIDED WHEN SPECIFIED FOR 120VAC AND 250VAC OPERATION. FOR OPERATION AT 120VAC, A 100,000 OHM, 1/2 WATT EXTERNAL RESISTOR IS REQUIRED. AT 250VAC, A 100,000 OHM, 1 WATT EXTERNAL RESISTOR IS REQUIRED.
- D. AN EXTERNAL DROPPING RESISTOR IS REQUIRED TO LIMIT THE POWER DISSIPATION IN THE LED. DISSIPATION IS 135 mW (RED)(GREEN) AT 25 DEGREE C. FOR OPERATION AT AMBIENT TEMPERATURES OF 25 DEGREE C DERATE THE MAXIMUM POWER DISSIPATION BY 5 mW/10°C.
- E. THE LED DESCRIBED IN NOTE D IS PROVIDED TOGETHER WITH THE NECESSARY CURRENT LIMITING RESISTOR. THE NECESSARY CURRENT LIMITING RESISTOR VALUE IS PROVIDED INTERNALLY TO PERMIT OPERATION AT THE VOLTAGE SHOWN. IF OPERATING VOLTAGES OTHER THAN THOSE LISTED ARE USED, CONSULT FACTORY.
- F. LONG-LIFE, T-1 SIZE SUBMINIATURE INCANDESCENT LAMPS ARE PROVIDED FOR VOLTAGE RANGES 120VAC TO 250VAC. LAMP FILTERS TO PROVIDE COLOR ARE AVAILABLE IN RED, AMBER, OR YELLOW. PLEASE STATE COLOR DESIRED. UNLESS NOTED, A CLEAR (NO FILTER) LAMP WILL BE SUPPLIED. PROVIDING A WHITE HANDLE GLOW.
- G. WHEN SWITCH ONLY IS SPECIFIED, USE "0" FOR 4th AND 5th DECISION FACTORS.
- H. CHEMICAL RESISTANCE: PLASTIC HANDLE AND CASE MAY BE CLEANED WITH DETERGENTS OR ALCOHOL. CLEANING SOLUTIONS SHOULD BE EXPOSED TO OUTSIDE AIR TO REMOVE RESIDUE. NOT RECOMMENDED, AS THEY ATTACK PLASTICS. CLEANING SOLUTIONS SHOULD BE EXPOSED TO OUTSIDE AIR TO REMOVE RESIDUE.

ARPAX
www.airpax.net

POWER PROTECTION PRODUCTS CAMBRIDGE, MD USA

DRAWN J.G. APPROVED R.C.

CHECKED R.C. DATE 9-23-70



THIRD ANGLE PROJECTION

INTERPRET DRAWING PER ANSI Y14.5M-1982

INCH [MM]

TOLERANCE UNLESS NOTED

INCH ± .015

MM ± .38

ANGLES ± 5°

SCALE

TYPE 203 SUPPLEMENTARY

MATERIAL

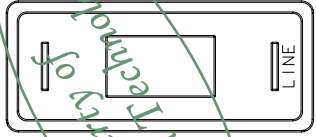
FINI

AM-328

A	B	C	D	E	F	G	H	J	K	L	M	N	P	R	S	U	V	Mx	T
---	---	---	---	---	---	---	---	---	---	---	---	---	---	---	---	---	---	----	---

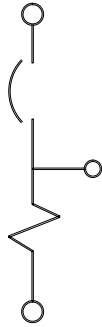
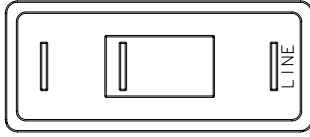
REVISIONS
AJ 29118
AK 31784
AL 32515
AM 33939
AN 35682
AP 41527

Sensata Technology Property of



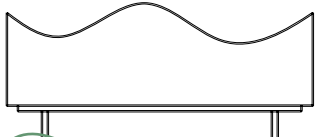
SERIES

203-1-1



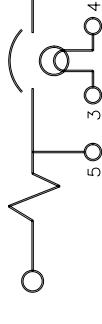
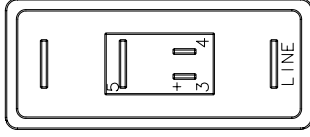
SHUNT

203-1-3



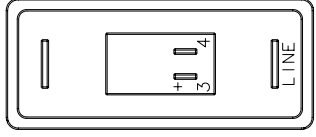
SERIES WITH
ILLUMINATED HANDLE

203-2-1



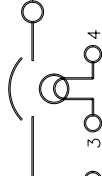
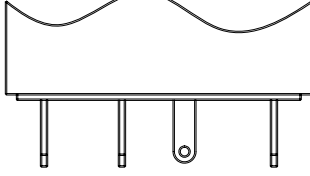
SHUNT WITH
ILLUMINATED HANDLE

203-2-3



SERIES WITH
ILLUMINATED HANDLE

203-2-1



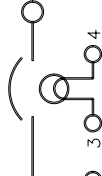
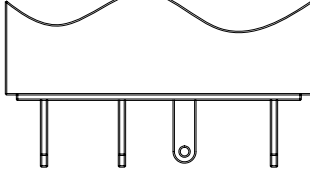
SHUNT WITH
ILLUMINATED HANDLE

203-2-3



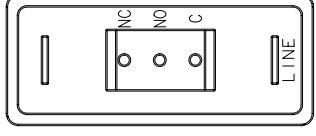
SERIES WITH
ILLUMINATED HANDLE

203-2-1



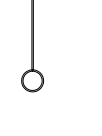
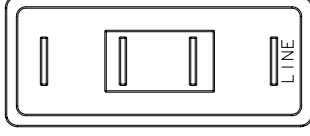
SHUNT WITH
ILLUMINATED HANDLE

203-2-3



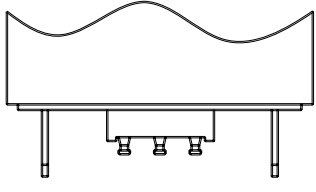
SERIES WITH
AUXILIARY SWITCH

203-1-2



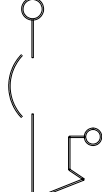
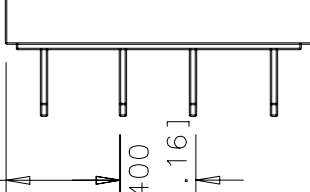
RELAY

203-1-4



SERIES WITH
AUXILIARY SWITCH

203-1-2



RELAY

203-1-4

AIRPAX
www.airpax.net

POWER PROTECTION PRODUCTS CAMBRIDGE, MD USA

DRAWN J.G. APPROVED R.C.

CHECKED R.C. DATE 9-23-70



THIRD ANGLE
PROJECTION

INTERPRET DRAWING PER
ANSI Y14.5M-1982

INCH
[MM]

TOLERANCE
UNLESS NOTED

INCH ±.015

MM ±.38

ANGLES ±5°

SCALE

TYPE 203 SUPPLEMENTARY

MATERIAL

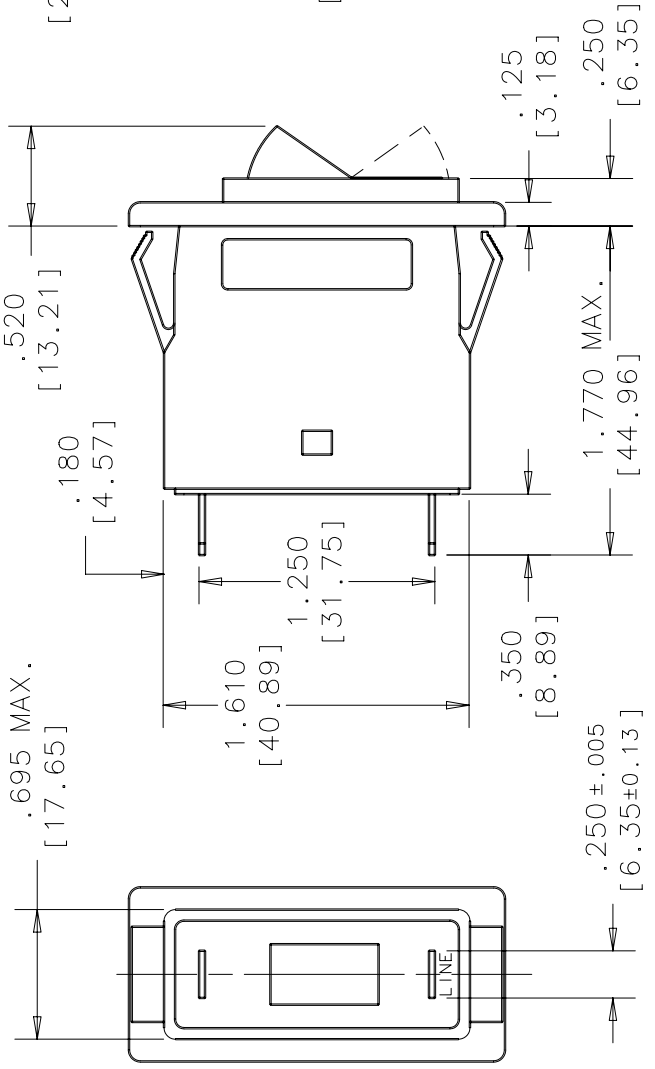
FINI

AM-328

A	B	C	D	E	F	G	H	J	K	L	M	N	P	R	S	U	V	M _A	T
---	---	---	---	---	---	---	---	---	---	---	---	---	---	---	---	---	---	----------------	---

REVISIONS
AJ 29118
AK 31784
AL 32515
AM 33939
AN 33882
AP 41527

Sole Property of
Seneca Technologies



AIRPAX
www.airpax.net

POWER PROTECTION PRODUCTS CAMBRIDGE, MD USA
 DRAWN J.G. APPROVED R.C.
 CHECKED R.C. DATE 9/23/70

THIRD ANGLE PROJECTION
 INTERPRET DRAWING PER ANSI Y14.5M-1982

TOLERANCE UNLESS NOTED
 INCH ± .015
 MM ± .38
 ANGLES ± 5°

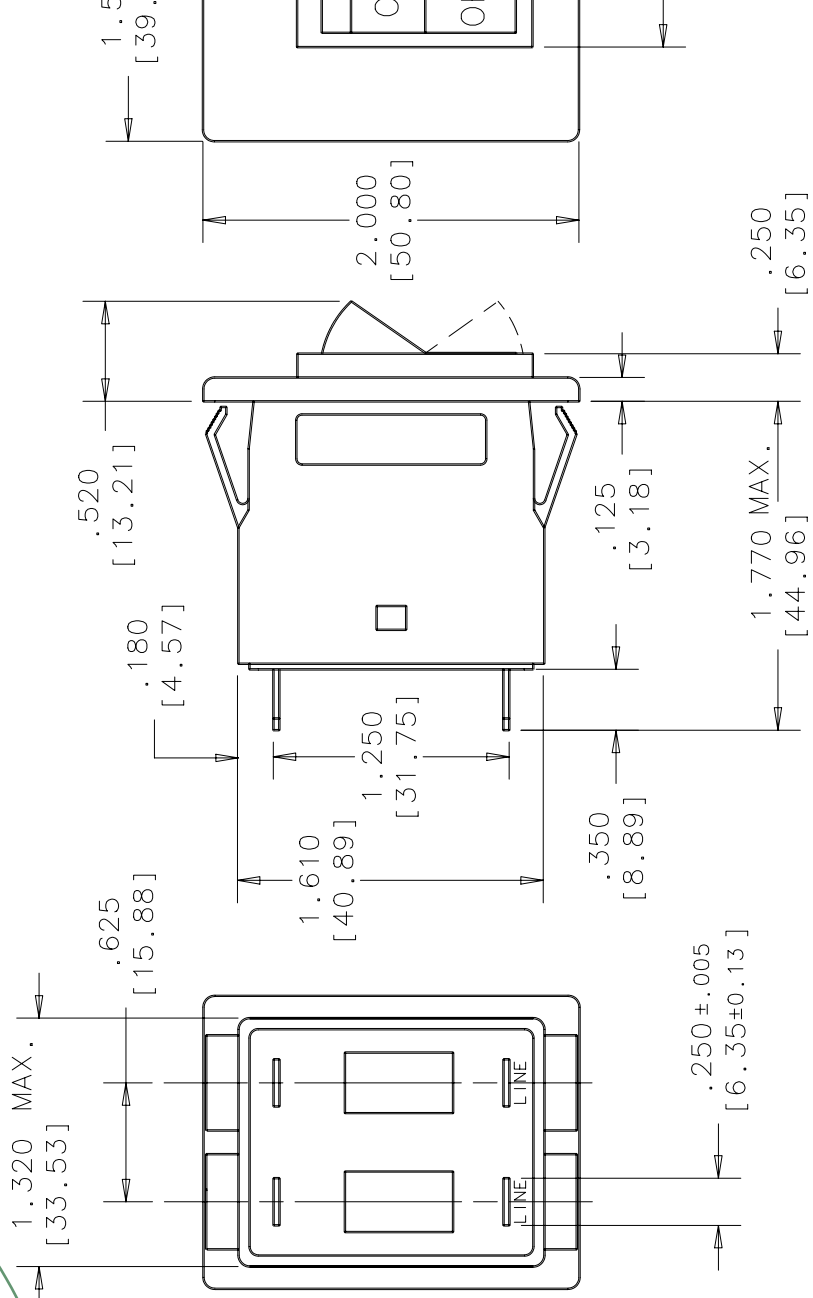
TYPE 203 SUPPLEMENTARY
 MATERIAL
 FIN
 AM-328

SCALE

A	B	C	D	E	F	G	H	J	K	L	M	N	P	R	S	U	V	Mx	T
---	---	---	---	---	---	---	---	---	---	---	---	---	---	---	---	---	---	----	---

REVISIONS
AJ 29118
AK 31784
AL 32515
AM 33939
AN 33982
AP 41527

Sole Property of
Sentinal Technologies



AIRPAX
www.airpax.net

POWER PROTECTION PRODUCTS CAMBRIDGE, MD USA

DRAWN J.G. APPROVED R.C.

CHECKED R.C. DATE 9-23-70



THIRD ANGLE
PROJECTION
INTERPRET DRAWING PER
ANSI Y14.5M-1982

INCH
[MM]



TOLERANCE
UNLESS NOTED

INCH ± .015

MM ± .38

ANGLES ± 5°

SCALE

TYPE 203 SUPPLEMENTARY

MATERIAL

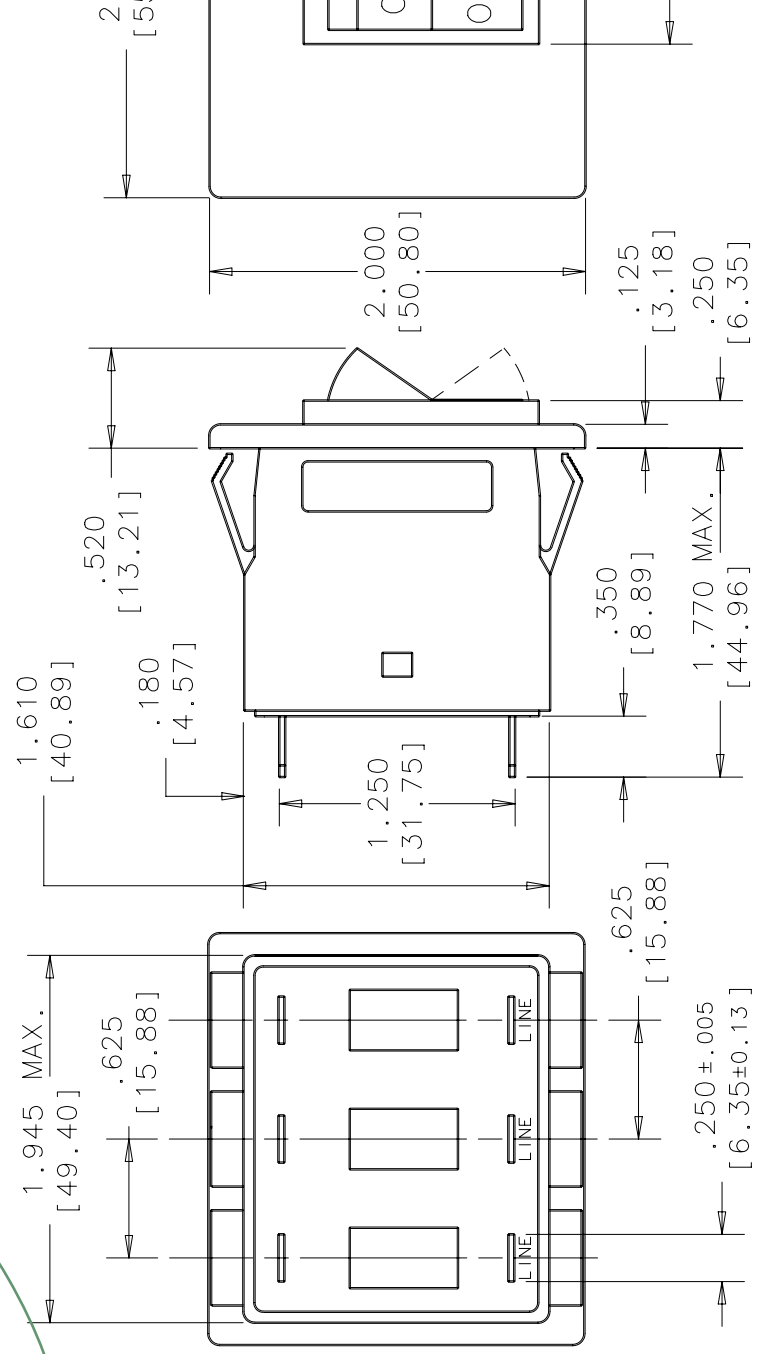
FIN

AM-328

A	B	C	D	E	F	G	H	J	K	L	M	N	P	R	S	U	V	Mx	T
---	---	---	---	---	---	---	---	---	---	---	---	---	---	---	---	---	---	----	---

REVISIONS
AJ 29118
AK 31784
AL 32515
AM 33939
AN 35682
AP 41527

Sensata Technology of
Sensata Technologies



AIRPAX
www.airpax.net

POWER PROTECTION PRODUCTS CAMBRIDGE, MD USA

DRAWN J.G. APPROVED R.C.

CHECKED R.C. DATE 9-23-70

A	B	C	D	E	F	G	H	J	K	L	M	N	P	R	S	U	V	Mx	T
---	---	---	---	---	---	---	---	---	---	---	---	---	---	---	---	---	---	----	---

TYPE 203 SUPPLEMENTAR

MATERIAL

FIN

AM-328

TOLERANCE UNLESS NOTED

INCH ± .015

MM ± .38

ANGLES ± 5°

SCALE

INCH [MM]

THIRD ANGLE PROJECTION

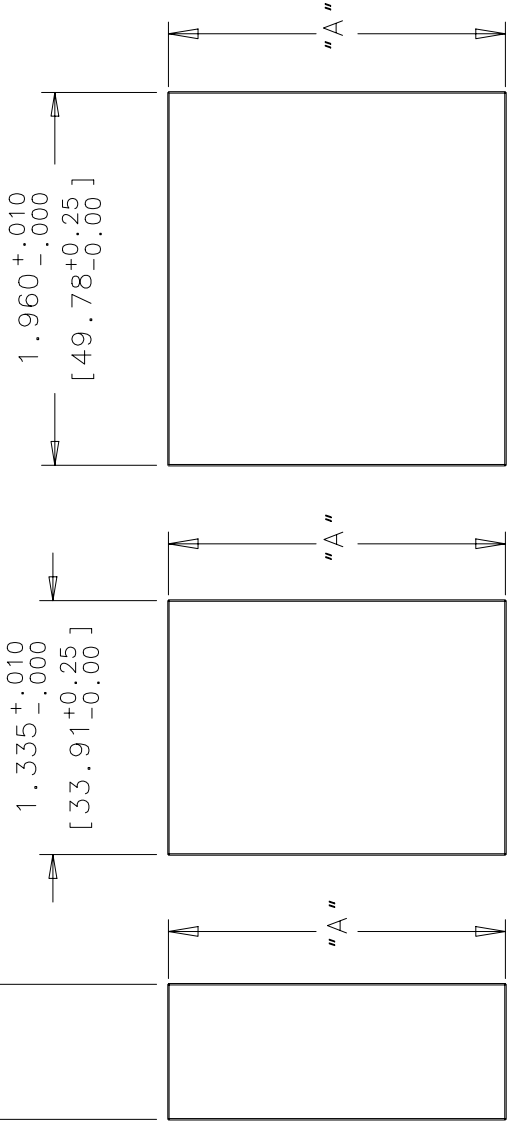
INTERPRET DRAWING PER ANSI Y14.5M-1982

REVISIONS
AJ 29118
AK 31784
AL 32515
AM 33930
AN 33682
AP 41527

PANEL MOUNTING DETAILS

Sentinal Technologies

2X ϕ .156
[ϕ 3.96]
C'SINK FOR #6
FLAT HEAD SCREW



SINGLE POLE

TWO POLE

THREE POLE

PANEL THICKNESS	.062 [1.57]	.093 [2.36]	.125 [3.18]
DIMENSION "A"	1.775 [45.09]	1.810 [45.97]	1.850 [46.99]

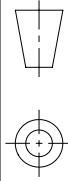
FRONT SNAP-IN MOUNT (STD)

ONE, TWO
FOR PANEL
TO .125 [3.18]
FLUSH
(OPTI

AIRPAX
www.airpax.net

POWER PROTECTION PRODUCTS CAMBRIDGE, MD USA

DRAWN J.G. APPROVED R.C.
CHECKED R.C. DATE 9-23-70



THIRD ANGLE
PROJECTION

INTERPRET DRAWING PER
ANSI Y14.5M-1982

INCH
[MM]

TOLERANCE
UNLESS NOTED

INCH ±.015

MM ±.38

ANGLES ±5°

SCALE

TYPE 203 SUPPLEMENTARY

MATERIAL

FIN

AM-328

A	B	C	D	E	F	G	H	J	K	L	M	N	P	R	S	U	V	Mr	T
---	---	---	---	---	---	---	---	---	---	---	---	---	---	---	---	---	---	----	---

Looking for pricing, stock, or lifecycle information?

Click below to explore more details on WIN SOURCE:

 [View 203-222-27211-1 on WIN SOURCE](#)

 [Sensata-Airpax Information](#)

Optimize Your Supply Chain with WIN SOURCE Solutions

-  Global Sourcing Solution
-  Obsolete Management
-  Cost Control Management
-  Shortage Management
-  Alternative Solution
-  Excess Inventory Management