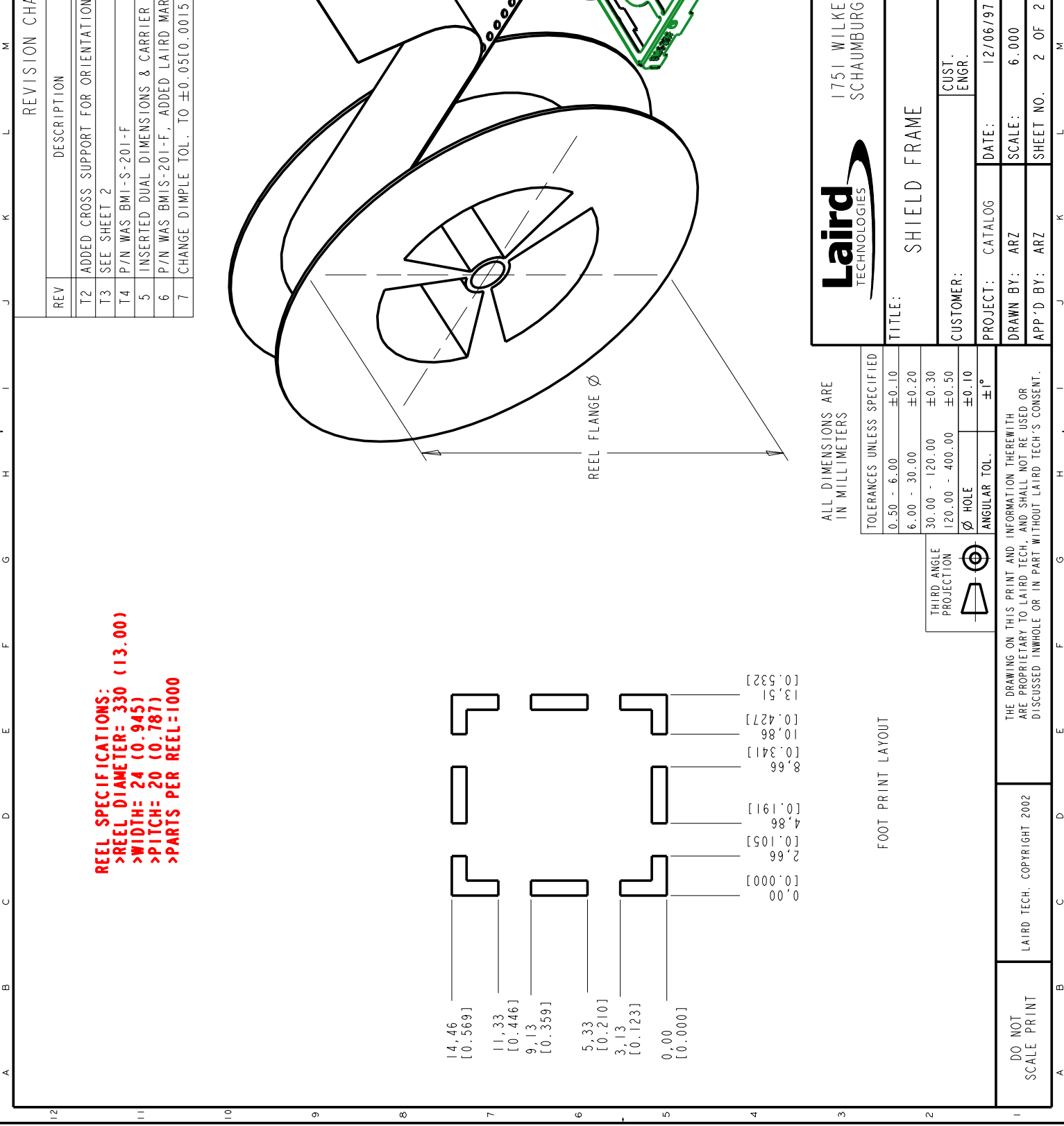




**THE DATASHEET OF
BMI-S-201-F**





REEL SPECIFICATIONS:
 >REEL DIAMETER= 330 (13.00)
 >WIDTH= 24 (0.945)
 >PITCH= 20 (0.787)
 >PARTS PER REEL=1000

14.46 [0.569]	13.51 [0.532]
11.33 [0.446]	10.86 [0.427]
9.13 [0.359]	10.341 [0.341]
5.33 [0.210]	8.66 [0.191]
3.13 [0.123]	4.86 [0.105]
0.00 [0.000]	2.66 [0.000]

FOOT PRINT LAYOUT

ALL DIMENSIONS ARE IN MILLIMETERS

TOLERANCES UNLESS SPECIFIED	
0.50 - 6.00	±0.10
6.00 - 30.00	±0.20
30.00 - 120.00	±0.30
120.00 - 400.00	±0.50
∅ HOLE	±0.10
ANGULAR TOL.	±1°



THE DRAWING ON THIS PRINT AND INFORMATION THEREWITH ARE PROPRIETARY TO LAIRD TECH, AND SHALL NOT BE USED OR DISCUSSED INWHOLE OR IN PART WITHOUT LAIRD TECH'S CONSENT.

DO NOT SCALE PRINT
 LAIRD TECH. COPYRIGHT 2002



1751 WILKE
 SCHAUMBURG

TITLE:

SHIELD FRAME

CUSTOMER:

CUST. ENGR.

PROJECT: CATALOG

DATE:

12/06/97

DRAWN BY: ARZ

SCALE:

6.000

APP'D BY: ARZ

SHEET NO.



2 OF 2

REV	DESCRIPTION
T2	ADDED CROSS SUPPORT FOR ORIENTATION
T3	SEE SHEET 2
T4	P/N WAS BMI-S-201-F
5	INSERTED DUAL DIMENSIONS & CARRIER
6	P/N WAS BMIS-201-F, ADDED LAIRD MARK
7	CHANGE DIMPLE TOL. TO ±0.05(0.0015

REVISION CHG

Looking for pricing, stock, or lifecycle information?

Click below to explore more details on WIN SOURCE:

-  [View BMI-S-201-F on WIN SOURCE](#)
-  [Laird Technologies EMI Information](#)

Optimize Your Supply Chain with WIN SOURCE Solutions

-  Global Sourcing Solution
-  Obsolete Management
-  Cost Control Management
-  Shortage Management
-  Alternative Solution
-  Excess Inventory Management