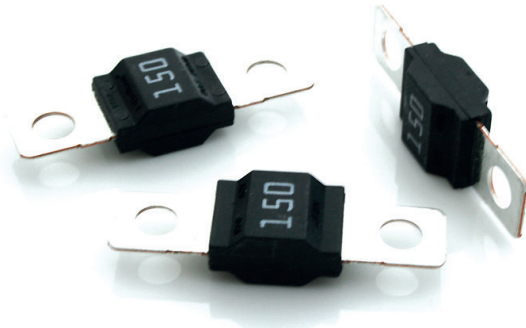




**THE DATASHEET OF**  
**0498060.M**





MIDI® Fuses

## MIDI®, Clear MIDI®, and One Hole MIDI® Style Bolt-down Fuse Rated 32V

This MIDI® style fuse offers a bolt-on space saving fuse for high current wiring protection and provides time delay characteristics with “Diffusion Pill Technology”.

### Specifications

Voltage Rating:	32 VDC
Interrupting Rating:	2000A @ 32 VDC
Recommended Environmental Temperature:	-40°C to + 125°C
Terminals Material:	Tin plated Copper
Black Housing Material:	PA66-GF25 (U.L. 94 Flammability rating – V0)
Clear Housing Material:	PA6/66 (U.L. 94 Flammability rating – HB)
Mounting Torque M5:	4.5 Nm +/- 1Nm
Mounting Torque M6:	6.0 Nm +/- 1Nm
Refers to:	ISO 8820-5:2015
Complies with:	Standard UL 248-1 as a Special Purpose Fuses in UL file E71611 (40-100A) and Directive 2011/65/EU



### Ordering Information

Part Number	Rating	Package Size	Housing Color	Bolt Size	Bolt Hole Qty	Mfg Location
0498xxx.M	30 - 200	1000	Black	M5	2	Mexico
0498xxx.M-CN	30 - 200	1000	Black	M5	2	China
0498xxx.H	30 - 200	100	Black	M5	2	Mexico
0498xxx.MXM6	30 - 200	1000	Black	M6	2	Mexico
0498xxx.MXM6-CN	30 - 200	1000	Black	M6	2	China
0498xxx.MX1M5	30 - 200	1000	Black	M5	1	Mexico
0498xxx.MX1M5-CN	30 - 200	1000	Black	M5	1	China
0498xxx.MX1M6	30 - 200	1000	Black	M6	1	Mexico
0498xxx.MX1M6-CN	30 - 200	1000	Black	M6	1	China
0498xxx.MXT	30 - 200	1000	Clear	M5	2	Mexico
0498xxx.MXT-CN	30 - 200	1000	Clear	M5	2	China
0498xxx.MXTM6	30 - 200	1000	Clear	M6	2	Mexico
0498xxx.MXTM6-CN	30 - 200	1000	Clear	M6	2	China

Materials manufactured in Asia are produced with the same specifications as materials manufactured in North America and meets the same test requirements. Multiple production locations are for capacity expansion only.

### Ratings

Part Number	Current Rating (A)	Color Code	Test Cable size (mm2)	Typ. Voltage Drop (mV)	Typ. Cold Resistance (mΩ)	Typ. I²t (A²s)
0498030_2	30	Orange	2.5	65	2.06	4,200
0498040_	40	Green	4	65	1.40	10,000
0498050_	50	Red	6	65	1.02	13,000
0498060_	60	Yellow	6	68	0.87	21,700
0498070_	70	Brown	10	70	0.72	24,000
0498080_	80	White	10	58	0.54	24,600
0498100_	100	Blue	16	60	0.46	51,300
0498125_2	125	Pink	25	71	0.39	73,200
0498150_1,2	150	Grey	25	77 <sup>4</sup>	0.32	81,900
0498175_1,2,3	175	Dark Green	25	77 <sup>4</sup>	0.26	100,000
0498200_1,2	200	Purple	25	77 <sup>4</sup>	0.26	125,000

Note 1: Short Circuit Protector only  
 Note 2: Not UL Recognized  
 Note 3: Color Coding deviating from ISO standard  
 Note 4: Measured at 75% Ir

The typical I²t is an average value calculated from the breaking capacity tests by using the melting time before the arcing occurs.



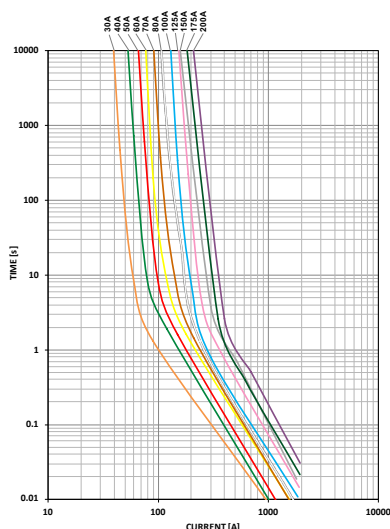
Clear MIDI® Fuses  
(clear nylon composite cover)

One Hole MIDI® Fuses

### Time-Current Characteristics

% of Rating	Opening Time Min / Max (s)	
	30A-125A	150A-200A
75	- / -	360,000 / ∞
100	360,000 / ∞	- / -
110	14,400 / ∞	- / -
150	90 / 3,600	- / -
200	3 / 100	1 / 15
300	0.3 / 3	- / -
350	- / -	0.3 / 5
500	0.1 / 1	- / -
600	- / -	0.1 / 1

### Time-Current Characteristic Curves



REV07272021

Littelfuse® products are not designed for, and shall not be used for, any purpose (including, without limitation, automotive, military, aerospace, medical, life-saving, life-sustaining or nuclear facility applications, devices intended for surgical implant into the body, or any other application in which the failure or lack of desired operation of the product may result in personal injury, death, or property damage) other than those expressly set forth in applicable Littelfuse® product documentation. Warranties granted by Littelfuse® shall be deemed void for products used for any purpose not expressly set forth in applicable Littelfuse® documentation. Littelfuse® shall not be liable for any claims or damages arising out of products used in applications not expressly intended by Littelfuse® as set forth in applicable Littelfuse® documentation. The sale and use of Littelfuse® products is subject to Littelfuse Terms and Conditions of Sale, unless otherwise agreed by Littelfuse®.

## MIDI®, Clear MIDI®, and One Hole MIDI® Style Bolt-down Fuse Rated 32V

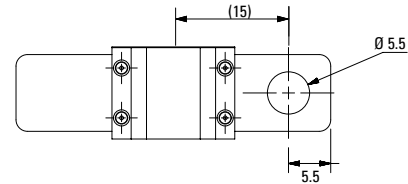
### Dimensions

Dimensions in mm for reference only. See outline drawing for dimensions and tolerances.

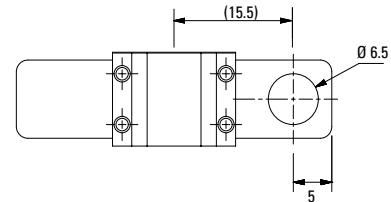
#### MIDI 2 Holes M5/M6 versions



#### MIDI 1 Hole M5 versions



#### MIDI 1 Hole M6 versions



### Typical Derating of Fuse Melting Element

Temperature Security Margin is 20%

Wire Cross Section And Fixture Test Set Up Refer To ISO 8820-5

Please Contact Littelfuse® For Details Regarding Derating Test Set Up



### Temperature Table

	max. allowed current load [A] at ambient temperature (typical derating)						
	-20°C	0°C	20°C	65°C	85°C	110°C	125°C
<b>30A</b>	30	30	28	24	22	18	16
<b>40A</b>	40	40	38	32	29	25	22
<b>50A</b>	50	50	50	45	41	34	29
<b>60A</b>	60	60	58	48	43	36	31
<b>70A</b>	70	70	70	59	53	45	39
<b>80A</b>	80	80	80	72	65	54	47
<b>100A</b>	100	100	100	85	77	64	55
<b>125A</b>	125	125	124	104	94	79	69
<b>150A</b>	113	113	113	113	104	88	77
<b>175A</b>	131	131	131	119	107	90	79
<b>200A</b>	150	150	145	122	110	93	81

Derating curves may change depending on the final condition of the application (terminals characteristics, wire size etc.). Please ask Littelfuse for more information.

REV07272021

Littelfuse® products are not designed for, and shall not be used for, any purpose (including, without limitation, automotive, military, aerospace, medical, life-saving, life-sustaining or nuclear facility applications, devices intended for surgical implant into the body, or any other application in which the failure or lack of desired operation of the product may result in personal injury, death, or property damage) other than those expressly set forth in applicable Littelfuse® product documentation. Warranties granted by Littelfuse® shall be deemed void for products used for any purpose not expressly set forth in applicable Littelfuse® documentation. Littelfuse® shall not be liable for any claims or damages arising out of products used in applications not expressly intended by Littelfuse® as set forth in applicable Littelfuse® documentation. The sale and use of Littelfuse® products is subject to Littelfuse Terms and Conditions of Sale, unless otherwise agreed by Littelfuse®.

## Looking for pricing, stock, or lifecycle information?

Click below to explore more details on WIN SOURCE:

 [View 0498060.M on WIN SOURCE](#)

 [Littelfuse Inc. Information](#)

## Optimize Your Supply Chain with WIN SOURCE Solutions

-  Global Sourcing Solution
-  Obsolete Management
-  Cost Control Management
-  Shortage Management
-  Alternative Solution
-  Excess Inventory Management