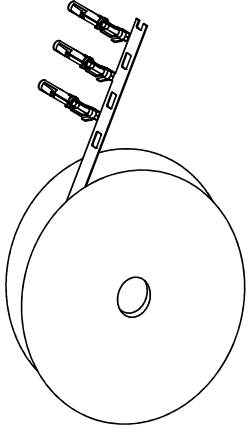


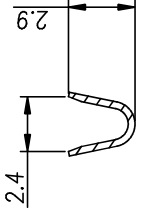


**THE DATASHEET OF
SS16M1F**

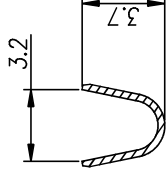




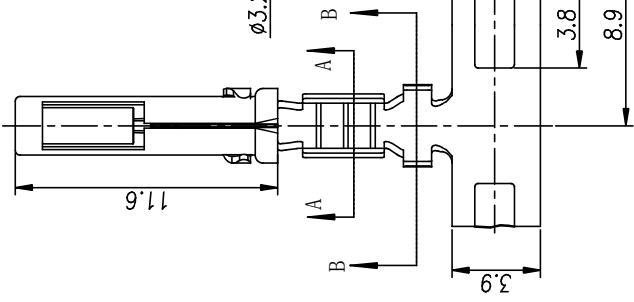
CONTACT ORIENTATION ON ROLL



SECTION A-A



SECTION B-B



NOTES : (UNLESS OTHERWISE SPECIFIED)

1. MATERIAL :

- 1.1. CONTACT BODY : COPPER ALLOY.
 - 1.2. OUTER SPRING : STAINLESS STEEL.
- 2. SPECIFICATIONS :**
- 2.1 CURRENT RATING : 13A MAX.
 - 2.2 TERMINATION TYPE : CRIMPING.
 - 2.3 WIRE RANGE : 16~18AWG.
 - 2.4 WIRE INSULATION DIA(MAX) : 3.2mm.

3. ROHS COMPLIANT.

4. ALL DIMENSIONS ARE FOR REFERENCE USE ONLY.

5. AVAILABLE TOOLS :

- 5.1 HAND CRIMPER : MFX-3954.
- 5.2 CRIMP APPLICATOR : MFX-3957.
- 5.3 EXTRACTION TOOL : QXRT16.



P/N	CONTACT PLATING(MATING AREA)
SS16M1T	TIN PLATING OVER NICKEL.
SS16M1F	GOLD FLASH PLATING OVER NICKEL.
SS16M1G10	10µ" GOLD PLATING OVER NICKEL.
SS16M1G15	15µ" GOLD PLATING OVER NICKEL.
SS16M1G30	30µ" GOLD PLATING OVER NICKEL.

REV	ECO	REL
B1	-	

QUANTITY	PART NUMBER	MATERIAL
UNLESS OTHERWISE SPECIFIED		
1) All dimensions are in metric (mm).		
2) Tolerances are as follows:		
DATE:	DRAWN:	DESIGNED:
3 PL DEC #1/64	ARROW	MM
3 PL DEC #0.08	ANGLE 45°	ENGINEER:
3) Note reference = APPROVAL:		
MATERIAL SPECIFICATIONS:		
CUSTOMER:		
THIS DRAWING IS SUPPLIED FOR INFORMATION ONLY. IT IS NOT TO BE USED FOR PRODUCTION. THE SPECIFICATIONS AND PERFORMANCE SHOWN HEREON ARE THE PROPERTY OF ARROW. ALL RIGHTS ARE RESERVED. REPRODUCTION OR USE OF THIS DRAWING WITHOUT THE WRITTEN PERMISSION OF ARROW IS STRICTLY PROHIBITED. MANUFACTURING VARIATIONS.		
PROCESS SPECIFICATIONS:		
NEXT ASST:		

Looking for pricing, stock, or lifecycle information?

Click below to explore more details on WIN SOURCE:

-  [View SS16M1F on WIN SOURCE](#)
-  [Amphenol Sine Systems Corp Information](#)

Optimize Your Supply Chain with WIN SOURCE Solutions

-  Global Sourcing Solution
-  Obsolete Management
-  Cost Control Management
-  Shortage Management
-  Alternative Solution
-  Excess Inventory Management