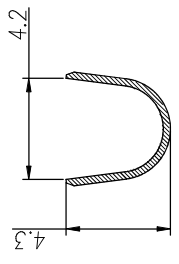




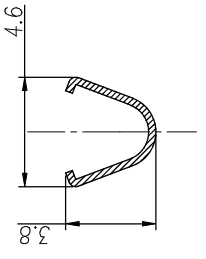
THE DATASHEET OF SS12A1T



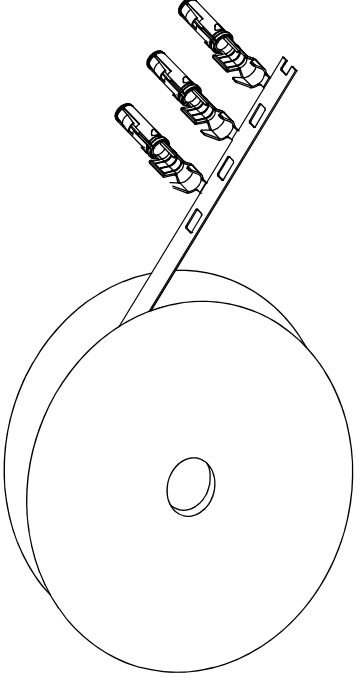
REV	E
BI	



SECTION B-B



SECTION A-A

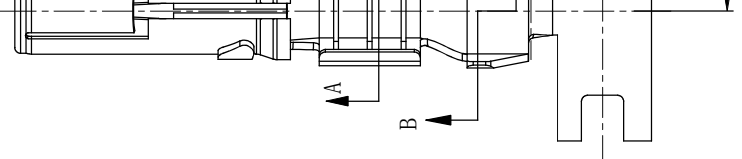


CONTACT ORIENTATION ON ROLL

NOTES : (UNLESS OTHERWISE SPECIFIED)

- 1. MATERIAL :**
 - 1.1. CONTACT BODY : COPPER ALLOY.**
 - 1.2. OUTER SPRING : STAINLESS STEEL.**
- 2. SPECIFICATIONS :**
 - 2.1 CURRENT RATING : 23A MAX.**
 - 2.2 TERMINATION TYPE : CRIMPING.**
 - 2.3 WIRE RANGE : 14~12AWG.**
 - 2.4 WIRE INSULATION DIA(MAX) : Ø4.3mm.**
- 3. ROHS COMPLIANT.**
- 4. ALL DIMENSIONS ARE FOR REFERENCE USE ONLY.**

P/N	CONTACT PLATING(MATING AREA)
SS12A1T	TIN PLATING OVER NICKEL.
SS12A1F	GOLD FLASH PLATING OVER NICKEL.
SS12A1G10	10μ" GOLD PLATING OVER NICKEL.
SS12A1G15	15μ" GOLD PLATING OVER NICKEL.
SS12A1G30	30μ" GOLD PLATING OVER NICKEL.



QUANTITY	PART NUMBER
UNLESS OTHERWISE SPECIFIED	
1) All dimensions are in metric (mm).	
2) Tolerances are as follows:	
DRG	FRACTIONS ±1/64
DEC	PL DEC ±0.15
CH	PL DEC ±0.08
ENK	PL DEC ±1
APP	Note reference =
MATERIAL SPECIFICATIONS:	
CUL	
TR	
INF	
PROCESS SPECIFICATIONS:	
THE DATE OF THE	
MANUFACTURE	
NEXT ASSY:	

Looking for pricing, stock, or lifecycle information?

Click below to explore more details on WIN SOURCE:

- [View SS12A1T on WIN SOURCE](#)
- [Amphenol Sine Systems Corp Information](#)

Optimize Your Supply Chain with WIN SOURCE Solutions

- ✓ Global Sourcing Solution
- ✓ Obsolete Management
- ✓ Cost Control Management
- ✓ Shortage Management
- ✓ Alternative Solution
- ✓ Excess Inventory Management