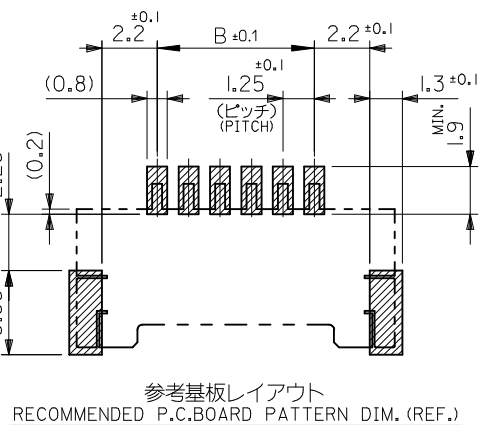
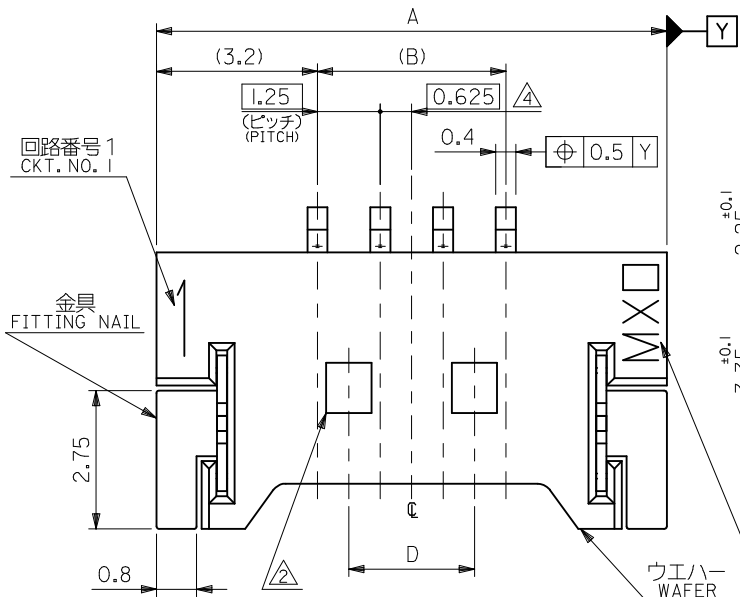
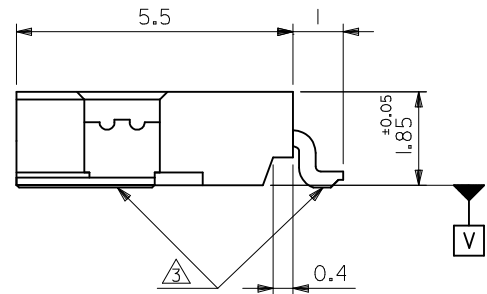
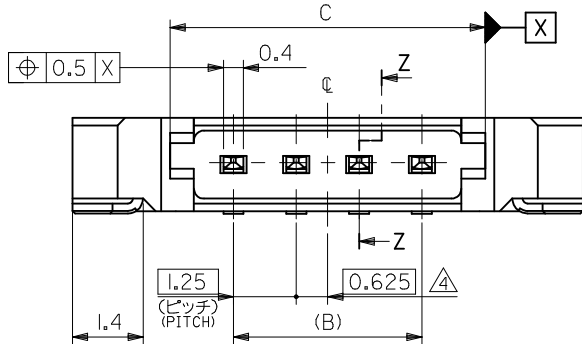


注記 NOTES

1. 嵌合相手 : 51146 シリーズ
 MATES WITH : 51146 SERIES
2. ロック窓は2、3極品は1箇所、4極品以上は2箇所とする。
 LOCKING WINDOW : ONE PLACE FOR 2 AND 3 CIRCUIT PRODUCTS AND TWO PLACES FOR MORE THAN 3 CIRCUIT PRODUCTS.
3. 基準面 [V] からのソルダータールと金具の半田付け面のズレ量は、上方向きに0.05MAX. 下方向きに0.15MAX. とし、20極以下の相互のバラツキ量は0.IMAX. とする。
 MISALIGNMENT OF SOLDER TAIL AND FITTING NAIL FROM [V]
 : UPPER DIRECTION 0.05MAX.
 : LOWER DIRECTION 0.15MAX.
 : OFFSET BETWEEN UPPER AND LOWER 0.IMAX. (UNDER 20 CKTS.)
4. 偶数極の製品に適用。
 APPLY EVEN CIRCUIT PRODUCTS.
5. 材質 MATERIAL
 ウエハー WAFER : PPS, UL94V-0
 ピン:リン青銅 PIN:PHOSPHOR BRONZE
 コンタクト部:金メッキ 0.2 マイクロメートル以上
 CONTACT AREA:GOLD 0.2 MICROMETER MINIMUM
 テール部:錫メッキ 3.0 マイクロメートル以上
 TAIL AREA:TIN 3.0 MICROMETER MINIMUM
 下地メッキ:ニッケルメッキ 1.0 マイクロメートル以上
 UNDER PLATING:NICKEL 1.0 MICROMETER MINIMUM
 金具:リン青銅 FITTING NAIL:PHOSPHOR BRONZE
 錫メッキ 3.0 マイクロメートル以上
 TIN 3.0 MICROMETER MINIMUM
 下地メッキ:ニッケルメッキ 1.0 マイクロメートル以上
 UNDER PLATING:NICKEL 1.0 MICROMETER MINIMUM
6. 本製品は 53780-**-**10/-**-**1.8 の鉛フリー品である。
 THIS PRODUCT IS LEAD FREE OF 53780-**-**10/-**-**1.8.
7. ELV及びRoHS適合品
 ELV & RoHS COMPLIANT.

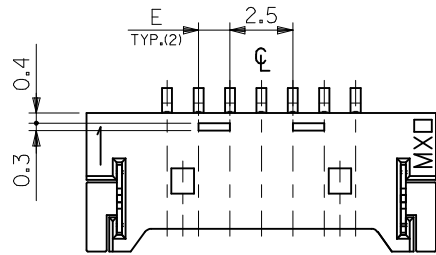


参考基板レイアウト
 RECOMMENDED P.C.BOARD PATTERN DIM. (REF.)

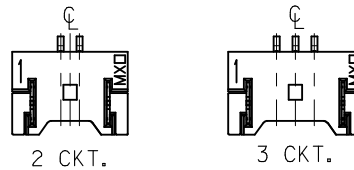


8.75	22.5	26.27	23.75	30.15	53780-2070	20
7.5	20	23.77	21.25	27.65	-1870	18
6.25	16.25	20.02	17.5	23.9	-1570	15
5	15	18.77	16.25	22.65	-1470	14
3.75	12.5	16.27	13.75	20.15	-1270	12
2.5	10	13.77	11.25	17.65	-1070	10
2.5	8.75	12.52	10	16.4	-0970	9
1.25	7.5	11.27	8.75	15.15	-0870	8
1.25	6.25	10.02	7.5	13.9	-0770	7
--	5	8.77	6.25	12.65	-0670	6
--	3.75	7.52	5	11.4	-0570	5
--	2.5	6.27	3.75	10.15	-0470	4
--	--	5.02	2.5	8.9	-0370	3
--	--	3.77	1.25	7.65	53780-0270	2
E	D	C	B	A	EMBOSSED PACKAGE	CKT. 極数
CONNECTOR SERIES NO. 53780-**-**19						オーダー番号 ORDER No.

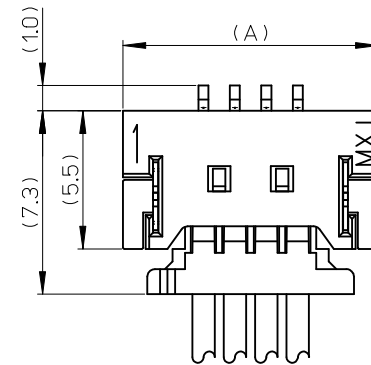
REVISED EC NO: J2018-0015 DRW:KNO2 CHKD: APPR:GGA	2017/07/16 2017/07/19	GENERAL TOLERANCES (UNLESS SPECIFIED)		DIMENSION STYLE		SCALE	DESIGN UNITS	THIRD ANGLE PROJECTION		
				MM ONLY		---	METRIC	1.25 W/B CONN WAFER ASSY FOR SMT		
		0.25 UNDER	±0.03	DRAWN BY	DATE	TITLE				
		0.25 OVER	±0.05	T. UENO	'04/04/15					
0.5 OVER	±0.1	CHECKED BY	DATE							
1.0 OVER	±0.2	M. SASAO	'04/04/15							
10 OVER	±0.25	APPROVED BY	DATE							
30 OVER	±0.3	M. SASAO	'04/04/15							
ANGULAR ±3 °		MATERIAL NO.		DOCUMENT NO.		SEE CHART				
DRAFT WHERE APPLICABLE MUST REMAIN WITHIN DIMENSIONS		SIZE A3	THIS DRAWING CONTAINS INFORMATION THAT IS PROPRIETARY TO MOLEX ELECTRONIC TECHNOLOGIES, LLC AND SHOULD NOT BE USED WITHOUT WRITTEN PERMISSION							



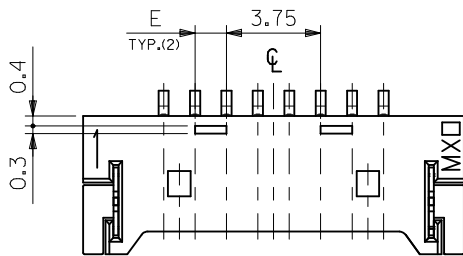
7~19極の奇数極に適用
 APPLY FOR ODD CIRCUITS OF 7~19



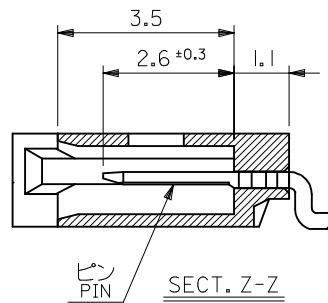
ロック形状図
 LOCK CONFIGURATION



嵌合図 (SCALE 5:1)
 MATED CONNECTORS (SCALE 5:1)



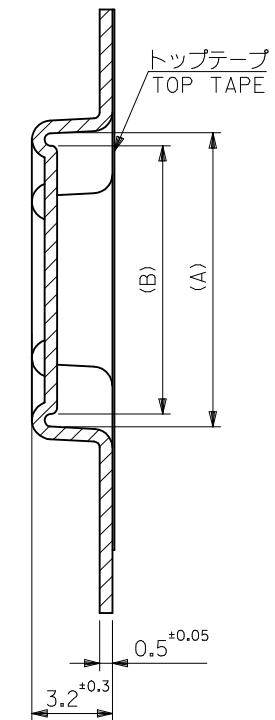
8~30 極の偶数極に適用
 APPLY FOR EVEN CIRCUITS OF 8~30



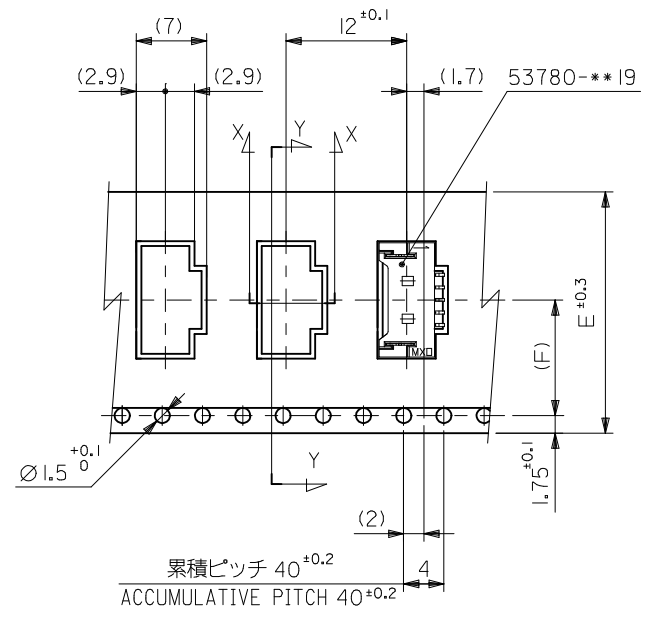
SECT. Z-Z

CONNECTOR SERIES NO. 53780-**19

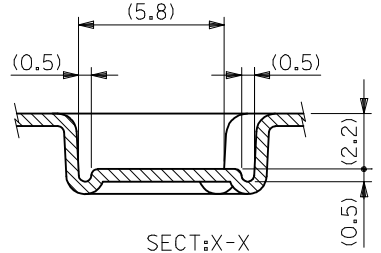
REVISED EC NO: J2018-0015 DRW: MKN02 CHKD: APPR: GGA	2017/07/06 2017/07/19	GENERAL TOLERANCES (UNLESS SPECIFIED)		DIMENSION STYLE		SCALE	DESIGN UNITS	THIRD ANGLE PROJECTION	
				MM ONLY		---	METRIC		
		0.25 UNDER	±0.03	DRAWN BY	DATE	TITLE			
		0.25 OVER	±0.05	T. UENO	'04/04/15	1.25 W/B CONN WAFER ASSY FOR SMT			
		0.5 OVER	±0.1	CHECKED BY	DATE				
1.0 OVER	±0.2	M. SASAO	'04/04/15						
10 OVER	±0.25	APPROVED BY	DATE						
30 OVER	±0.3	M. SASAO	'04/04/15						
ANGULAR ±3 °		MATERIAL NO.		SEE CHART		DOCUMENT NO.		SHEET NO.	
DRAFT WHERE APPLICABLE MUST REMAIN WITHIN DIMENSIONS		SIZE	THIS DRAWING CONTAINS INFORMATION THAT IS PROPRIETARY TO MOLEX ELECTRONIC TECHNOLOGIES, LLC AND SHOULD NOT BE USED WITHOUT WRITTEN PERMISSION						
		A3							



SECT:Y-Y
(SCALE 5:1)



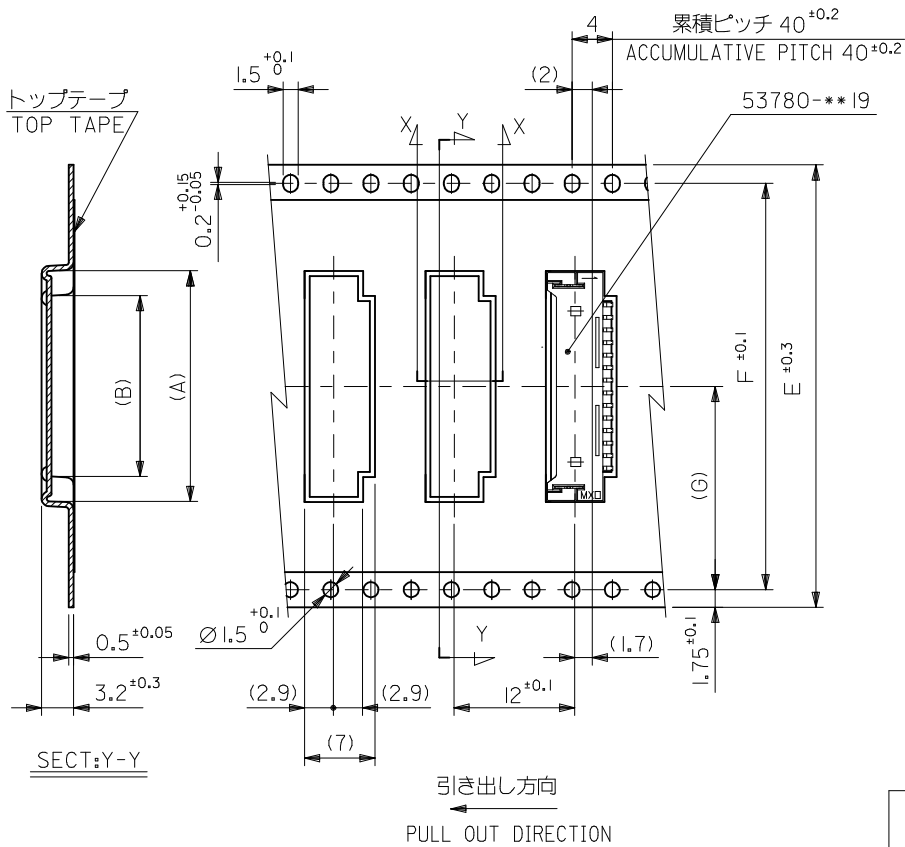
引き出し方向
PULL OUT DIRECTION



SECT:X-X
(SCALE 5:1)

11.5	24	29.4	25.4	11.75	16.7	53780-0970	9
				10.5	15.45	53780-0870	8
				9.25	14.2	53780-0770	7
				8	12.95	53780-0670	6
				6.75	11.7	53780-0570	5
7.5	16	21.4	17.4	5.5	10.45	53780-0470	4
				4.25	9.2	53780-0370	3
				3	7.95	53780-0270	2
(F)	E	D	C	(B)	(A)	MATERIAL NO.	種数 CKT.
						MODEL NO.	53780-**-70

REVISED EC NO: J2018-0015 DRAWN: KNO2 CHKD: APPR: GGA	DESCRIPTION 2017/07/06 2017/07/19	GENERAL TOLERANCES (UNLESS SPECIFIED)		DIMENSION STYLE MM ONLY		SCALE ---	DESIGN UNITS METRIC	THIRD ANGLE PROJECTION	
		0.25 UNDER	±0.03	DRAWN BY	DATE	TITLE			
		0.25 OVER	±0.05	T. UENO	'04/04/15	1.25 W/B WAFER ASSY EMBOSSED TAPE PACKAGE			
		0.5 OVER	±0.1	CHECKED BY	DATE	molex			
		1.0 OVER	±0.2	M. SASAO	'04/04/15				
10 OVER	±0.25	APPROVED BY	DATE	DOCUMENT NO.		SHEET NO.			
30 OVER	±0.3	M. SASAO	'04/04/15	SD-53780-004		2 OF 3			
ANGULAR ±3 °		DRAFT WHERE APPLICABLE MUST REMAIN WITHIN DIMENSIONS		SIZE A3	THIS DRAWING CONTAINS INFORMATION THAT IS PROPRIETARY TO MOLEX ELECTRONIC TECHNOLOGIES, LLC AND SHOULD NOT BE USED WITHOUT WRITTEN PERMISSION				



20.2	40.4	44	49.4	45.4	25.5	30.45	53780-2070	20
					25.5	27.95	53780-1870	18
					19.25	24.2	53780-1570	15
					18	22.95	53780-1470	14
					15.5	20.45	53780-1270	12
14.2	28.4	32	37.4	33.4	13	17.95	53780-1070	10
(G)	F	E	D	C	(B)	(A)	MATERIAL NO.	種数 CKT.

REVISED EC NO: J2018-0015 DRW: NKN02 CHKD: APPR: GGA 2017/07/06 2017/07/19	GENERAL TOLERANCES (UNLESS SPECIFIED)		DIMENSION STYLE MM ONLY		SCALE ---	MODEL NO. 53780-***70
	0.25 UNDER	±0.03	DRAWN BY T. UENO	DATE '04/04/15	TITLE 1.25 W/B WAFER ASSY EMBOSSED TAPE PACKAGE	
	0.25 OVER	±0.05	CHECKED BY M. SASAO	DATE '04/04/15		
	0.5 OVER	±0.1	APPROVED BY M. SASAO	DATE '04/04/15		
1.0 OVER	±0.2	MATERIAL NO.	DOCUMENT NO.	SHEET NO. 3 OF 3		
10 OVER	±0.25	SEE CHART		SD-53780-004		
30 OVER	±0.3	DRAFT WHERE APPLICABLE MUST REMAIN WITHIN DIMENSIONS		THIS DRAWING CONTAINS INFORMATION THAT IS PROPRIETARY TO MOLEX ELECTRONIC TECHNOLOGIES, LLC AND SHOULD NOT BE USED WITHOUT WRITTEN PERMISSION		

Looking for pricing, stock, or lifecycle information?

Click below to explore more details on WIN SOURCE:

 [View 537800270 on WIN SOURCE](#)

 [Molex, LLC Information](#)

Optimize Your Supply Chain with WIN SOURCE Solutions

-  Global Sourcing Solution
-  Obsolete Management
-  Cost Control Management
-  Shortage Management
-  Alternative Solution
-  Excess Inventory Management