



THE DATASHEET OF SENSORSTARTERKIT





Sensor Starter Kit Installation Guide

by Samy Ahmed

WINDOWS 7

Installing the Evaluation Software

Click on the CD from My Computer.

Run "Rapid_VCNL40x0_Installer.exe" located on the CD.

The installer extracts necessary files and then launches the setup wizard.

Click Next >>

Choose the destination directory.

Click Next >>

Accept the software licensing terms and conditions.

I accept the License Agreement

Click Next >>

The software will install. This may take several minutes.

Click Finish

Note

- Administrative privileges are required to install this software

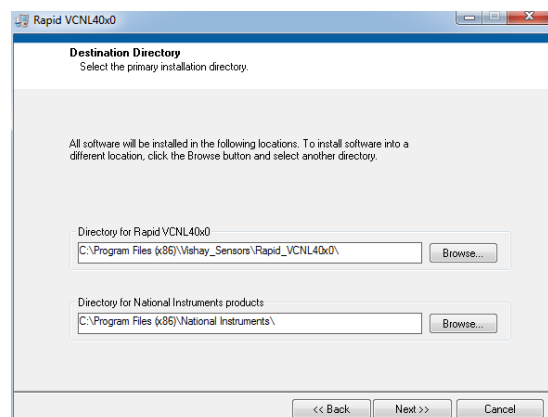
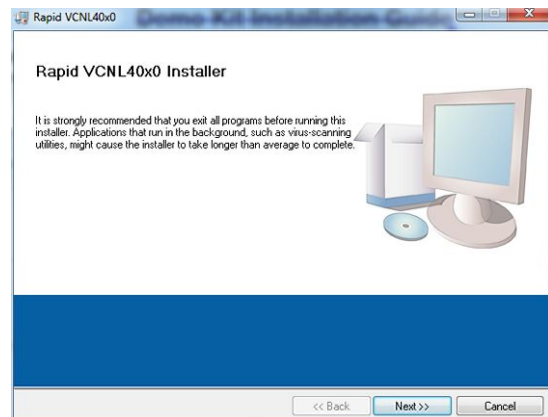
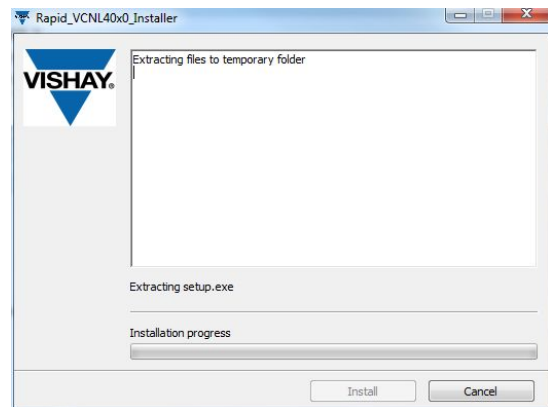
	USB Driver	10.04.2014 17:41	File folder	
	vishay_license	10.04.2014 17:41	File folder	
	Rapid_VCNL40x0_Installer	11.04.2014 08:11	Application	145.700 KB

Upgrade from VCNL4000DemoKit

If you already own the previous VCNL4000DemoKit and would like use the new software modules found on the SensorStarterKit website, please download the "SensorStarterKit.zip" upgrade from:

http://images.vishay.com/books/Vishay_SensorStarterKit.zip

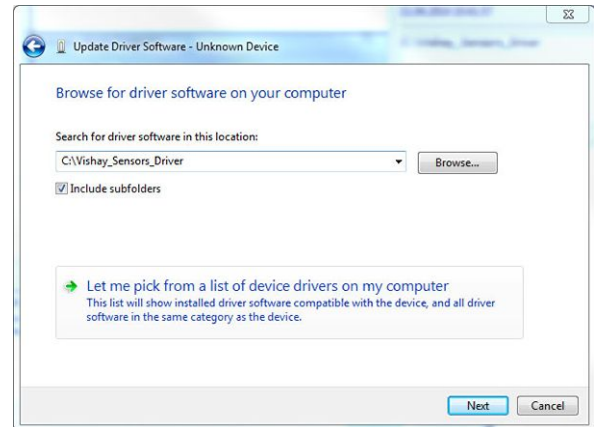
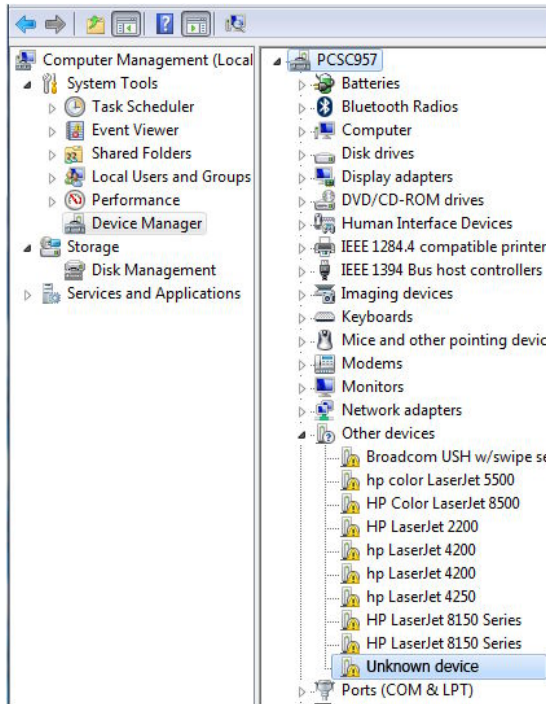
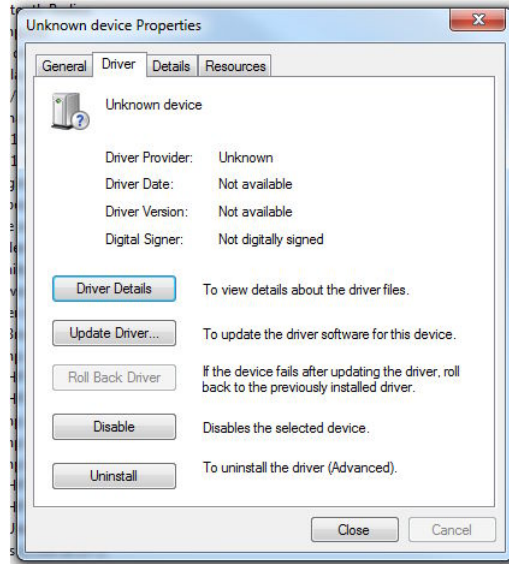
Extract the file and then follow the steps given in "Installing the Evaluation Software" above.



Sensor Starter Kit Installation Guide

Installing the Driver

- Create a folder on the C drive called Vishay_Sensors_Driver
- Copy the USB Driver folder from the disc to Vishay_Sensors_Driver
- Click on Start
- Right click on Computer
- Click on Manage
- Click on Device Manager
- Right click on "Unknown device"
- Select "Properties"
- Select Driver tab
- Click on Update Driver
- Click on Browse
- Select C:\Vishay_Sensors_Driver



Restart and Run Program

- Restart computer
- Click on Start, Programs, Vishay_Sensors, Rapid_VCNL40x0, or click on the shortcut on the desktop.

Sensor Starter Kit Installation Guide

WINDOWS XP

Installing the USB Driver

Insert the USB connector into your computer. Administrative privileges are required to load this software. The Found New Hardware Wizard will start.

Can Windows connect to Windows Update to search for software?

- Yes, this time only

Click Next >

What do you want the wizard to do?

- Install from a list or specific location

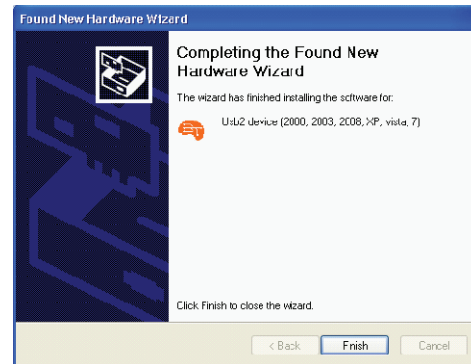
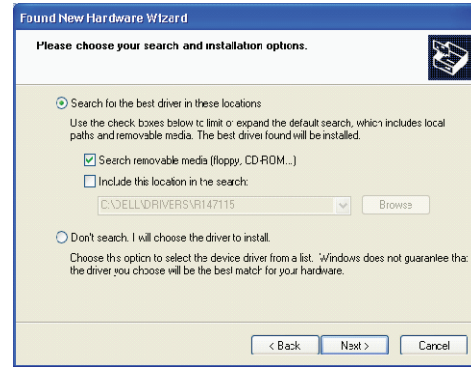
Click Next >

“Search for the best driver in these locations and Search removable media (floppy, CD-ROM, …)” will already be selected

Click Next >

For Windows 7, Vista, XP, 2008, 2007, and 2000, the driver “cyusb” will be installed. For Windows ME and 98, the driver EXUSB_old or CYUSB_old will be installed.

Click Finish



Installing the Evaluation Software

Click on the CD from My Computer. Open the USB Sensor Kit Software file folder.

Click on Setup (Type: Application)

The kit software installer launches.

Click Next >>

Choose the destination directory.

Click Next >>

Accept the software licensing terms and conditions.

- I accept the License Agreement

Click Next >>

The software will install. This may take several minutes.

Click Finish

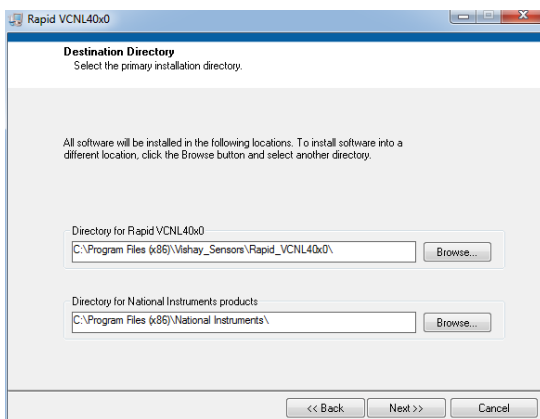
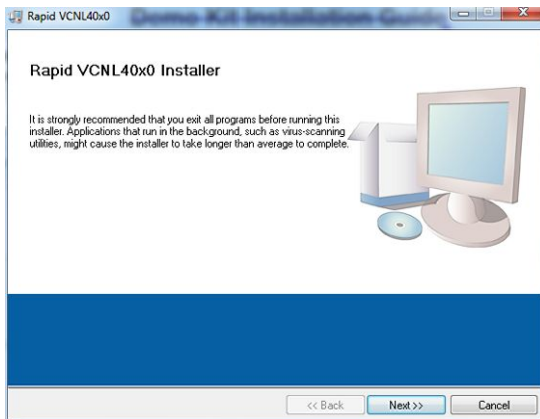
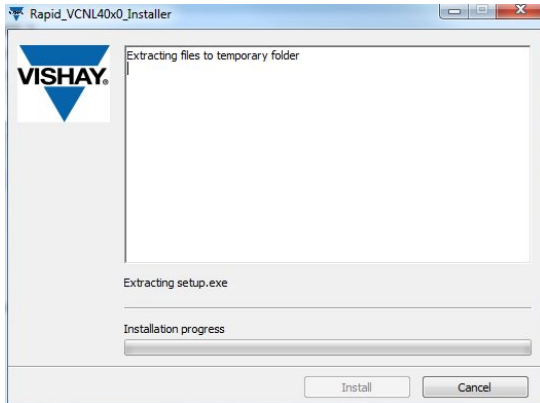
Restart

Restart your computer.

Sensor Starter Kit Installation Guide

Run Program

Click on Start, Programs, Vishay_Sensors, Rapid_VCNL40x0, or click on the shortcut on the desktop.



Looking for pricing, stock, or lifecycle information?

Click below to explore more details on WIN SOURCE:

 [View SENSORSTARTERKIT on WIN SOURCE](#)

 [Vishay Information](#)

Optimize Your Supply Chain with WIN SOURCE Solutions

-  Global Sourcing Solution
-  Obsolete Management
-  Cost Control Management
-  Shortage Management
-  Alternative Solution
-  Excess Inventory Management