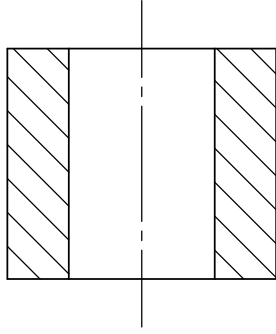
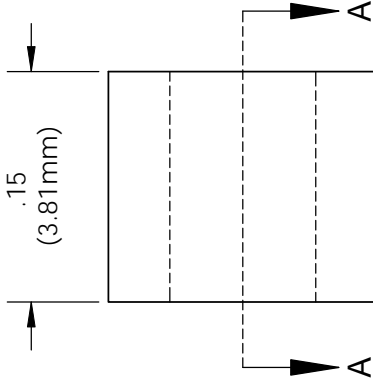


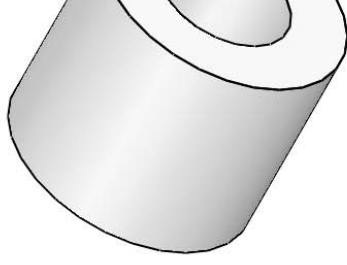
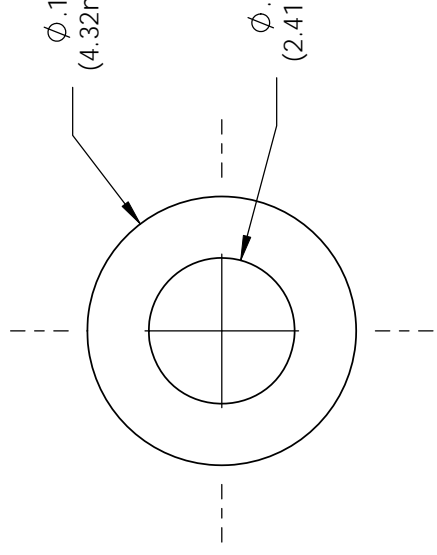


**NOTES:**

1. FINISH: Parts should have a smooth appearance, min .600 surface finish, with no gates and all flash removed.
2. Draft 1° on .095 dimension.
3. U.S. & Foreign Pat. Issued & Pend.



**SECTION A-A**

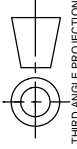


**ISOMETRIC VIEW**

REVISION		DESCRIPTION
ECN #	REV	INITIAL RELEASE
	N/A	
	001	REVISED PER ECR111
145	002	CHANGE IN MATERIAL

UNLESS OTHERWISE SPECIFIED  
DIMENSIONS ARE IN INCHES:  
ANGLES DECIMALS  
± 1° ± .020  
XX ± .010  
FINISH .XXX ± .005

BREAK ALL CORNERS AND SHARP  
EDGES 50% MAX



THIRD ANGLE PROJECTION

PROPRIETARY AND CONFIDENTIAL  
THE INFORMATION CONTAINED IN THIS  
DRAWING IS THE PROPERTY OF VISUAL  
COMMUNICATIONS COMPANY, INC.  
REPRODUCTION OR TRANSMISSION  
WHOLE OR IN PART WITHOUT THE WRITTEN PERMISSION  
OF VISUAL COMMUNICATIONS COMPANY, INC.  
IS PROHIBITED.

**MATERIAL**  
TPE,  
BLACK

**FINISH**  
SEE NOTES

APPROVALS	DATE
DRAWN K.HOWARD	1/29/10
CHECKED DPZ	2/22/10

DO NOT SCALE DRAWING

**VISUAL**  
190 Boscillon  
Phone (760) 51

**TITLE:**  
**CLIP**

**SIZE** DW  
**A**

**SCALE:** 8:

5

4

3

2

## Looking for pricing, stock, or lifecycle information?

Click below to explore more details on WIN SOURCE:

- [⊖ View RTN\\_100 on WIN SOURCE](#)
- [⊖ Visual Communications Company - VCC Information](#)

## Optimize Your Supply Chain with WIN SOURCE Solutions

- ✓ Global Sourcing Solution
- ✓ Obsolete Management
- ✓ Cost Control Management
- ✓ Shortage Management
- ✓ Alternative Solution
- ✓ Excess Inventory Management