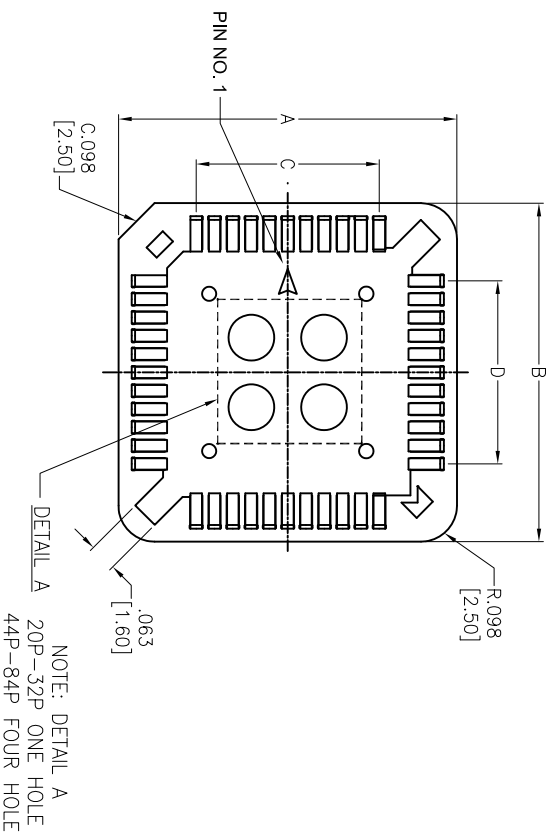
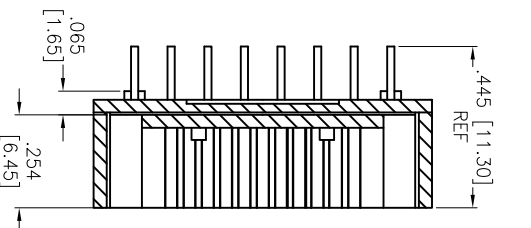




THE DATASHEET OF PLCC-32-AT



Rev	AWO #	Description	Date	Appr
-		RELEASED	11/8/04	
A		ADDED PLATING THICKNESS	01/07/14	
B		UPDATE DRAWING	2/25/20	LH/RC
C		ADDED SHT 2 PINOUT	12/28/22	SS



A		B		C		D		E		F	
INCHES	MM	INCHES	MM	INCHES	MM	INCHES	MM	INCHES	MM	INCHES	MM
0.610	15.50	0.610	15.50	0.200	5.08	0.200	5.08	0.200	5.08	0.200	5.08
0.710	18.04	0.710	18.04	0.300	7.62	0.300	7.62	0.300	7.62	0.300	7.62
0.710	18.04	0.811	20.60	0.300	7.62	0.400	10.16	0.300	7.62	0.400	10.16
0.924	23.48	0.924	23.48	0.500	12.70	0.500	12.70	0.500	12.70	0.500	12.70
1.018	25.88	1.018	25.88	0.600	15.24	0.600	15.24	0.600	15.24	0.600	15.24
1.246	31.66	1.246	31.66	0.800	20.32	0.800	20.32	0.800	20.32	0.800	20.32
1.443	36.66	1.443	36.66	1.000	25.40	1.000	25.40	1.000	25.40	1.000	25.40

dated UL 94V-0

ax

0 VAC for 1 minute

UNLESS OTHERWISE SPECIFIED
ALL DIMENSIONS ARE INCHES [MM]
TOLERANCES: EXCEPT AS NOTED
INCHES Holes
.X ±.10 ØXX ±.10
.XX ±.020 ØXXX ±.015
.XXX ±.015 ØXXXX ±.010

ADAM TECH
909 Rahway Avenue,
Union, NJ 07083
Phone: 908-687-5000
Fax: 908-687-5710

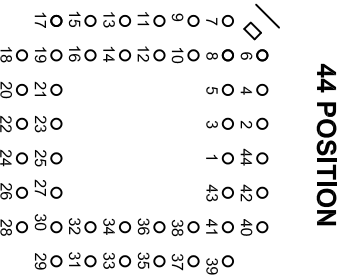
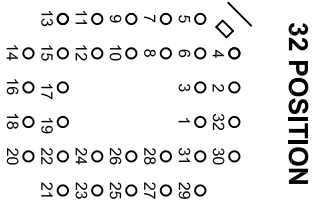
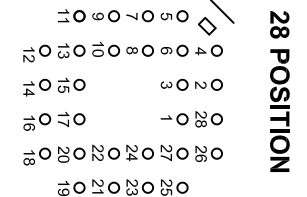
PLCC SOCKET, 20 ~ 84 POSITION, PCB

APPROVED	DATE	DATE	TITLE	SIZE	PART NO.	REV
CHECKED	SS	11/8/04	PLCC-XX-AT	X	PLCC-XX-AT	C
DRAWN	SS	11/8/04	PLCC-XX-AT	X	PLCC-XX-AT	C

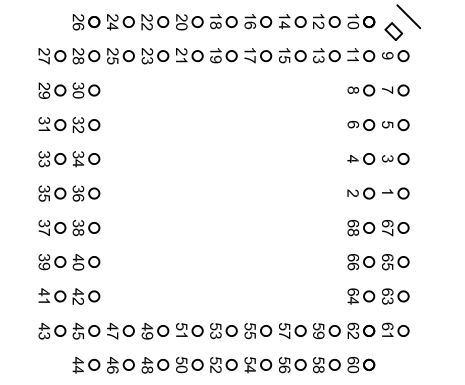


Rev	AWO #	Description	Date	Appr
		SEE SH1 1 FOR REVISION		

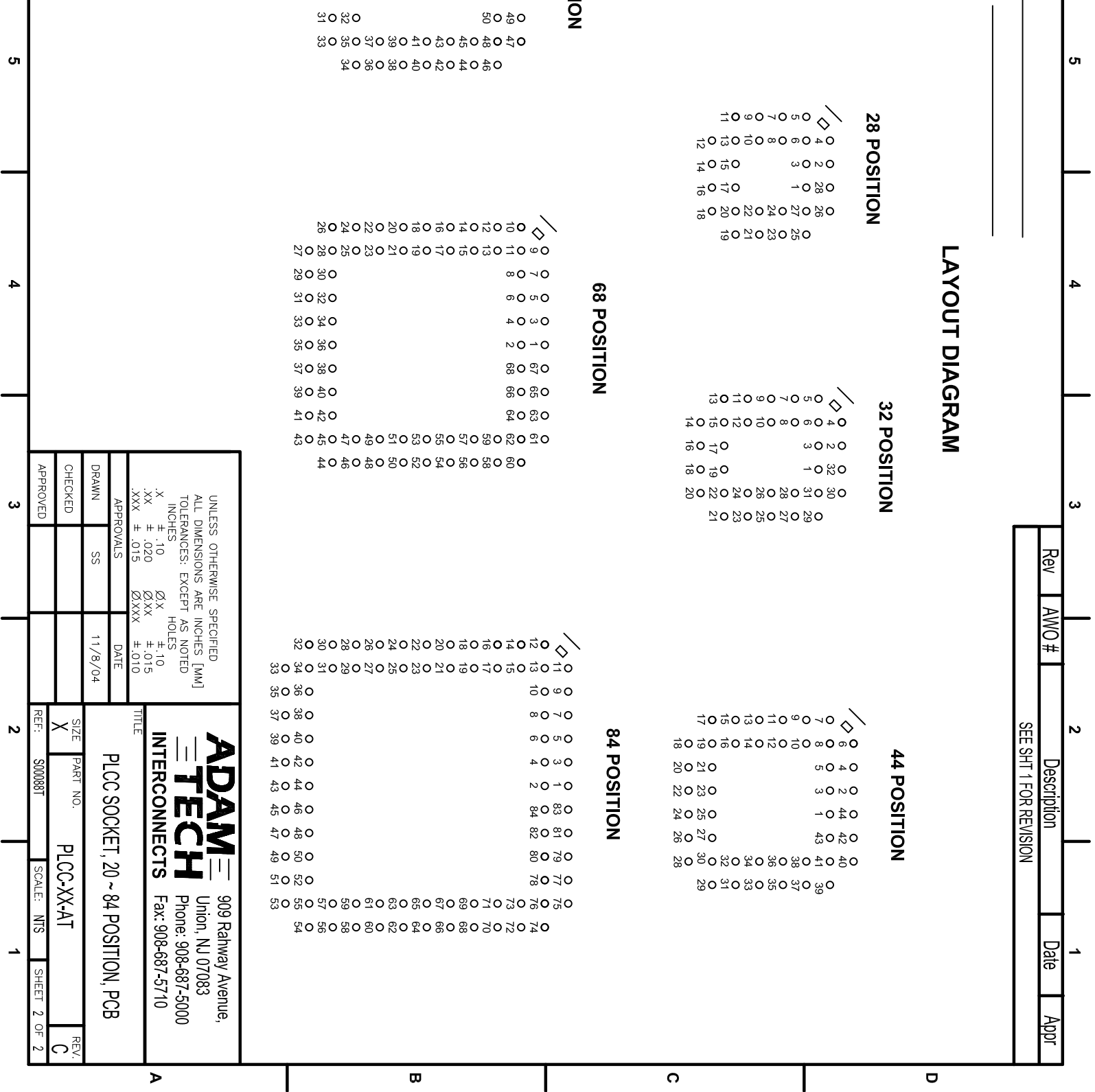
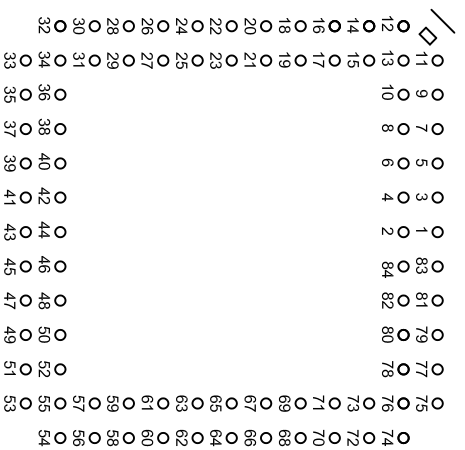
LAYOUT DIAGRAM



68 POSITION



84 POSITION



UNLESS OTHERWISE SPECIFIED
ALL DIMENSIONS ARE INCHES [MM]
TOLERANCES: EXCEPT AS NOTED

INCHES	HILES
.X ± .10	ØX ± .10
.XX ± .020	±.015
.XXX ± .015	ØXXX ± .010

APPROVALS

DRAWN	SS	DATE	11/8/04
CHECKED			
APPROVED			

ADAM TECH 909 Rahway Avenue,
Union, NJ 07083
Phone: 908-687-5000
Fax: 908-687-5710



INTERCONNECTS

TITLE: **PLCC SOCKET, 20 ~ 84 POSITION, PCB**

SIZE	PART NO.	REV.
X	PLCC-XX-AT	C
REF: S00088T	SCALE: NTS	SHEET 2 OF 2

Looking for pricing, stock, or lifecycle information?

Click below to explore more details on WIN SOURCE:

-  [View PLCC-32-AT on WIN SOURCE](#)
-  [Adam Technologies, Inc. Information](#)

Optimize Your Supply Chain with WIN SOURCE Solutions

-  Global Sourcing Solution
-  Obsolete Management
-  Cost Control Management
-  Shortage Management
-  Alternative Solution
-  Excess Inventory Management