



**THE DATASHEET OF
L826-1X1T-43-F**



THE INFORMATION CONTAINED HEREIN IS CONSIDERED "PROPRIETARY" TO BEL FUSE INC. AND SHALL NOT BE COPIED, REPRODUCED OR DISCLOSED WITHOUT THE WRITTEN APPROVAL OF BEL FUSE INC.

RoHS



| LED1 POLARITY | | | LED2 POLARITY | | |
|---------------|--------|--------|---------------|--------|--------|
| PIN 13 | PIN 14 | COLOR | PIN 15 | PIN 16 | COLOR |
| - | + | YELLOW | - | + | GREEN |
| | | | + | - | ORANGE |

ELECTRICAL CHARACTERISTICS @ 25°C

TURNS RATIO

| | |
|-----|---------------|
| TP1 | 1CT : 1CT ±2% |
| TP2 | 1CT : 1CT ±2% |
| TP3 | 1CT : 1CT ±2% |
| TP4 | 1CT : 1CT ±2% |

DCI @ 100kHz/100mVRMS

8mA DC BIAS 350µH MIN.

INS. LOSS

| | |
|------------------|-------------|
| 0.1MHz TO 1MHz | -1.1 dB MAX |
| 1MHz TO 65MHz | -0.5 dB MAX |
| 65MHz TO 100MHz | -0.8 dB MAX |
| 100MHz TO 125MHz | -1.2 dB MAX |

RET. LOSS (MIN)

| | |
|--------------|-----------------------|
| 0.5MHz-40MHz | -18 dB |
| 40MHz-100MHz | -12+20LOG(f/80MHz) dB |

CM TO CM REJ

100kHz - 100MHz -30 dB MIN

CM TO DM REJ

100kHz - 100MHz -35 dB MIN

HIPOT (Isolation Voltage): 1500 Vrms or 2250VDC

100% OF PRODUCT TESTED IN PRODUCTION TO COMPLY WITH IEEE 802.3 REQUIREMENTS

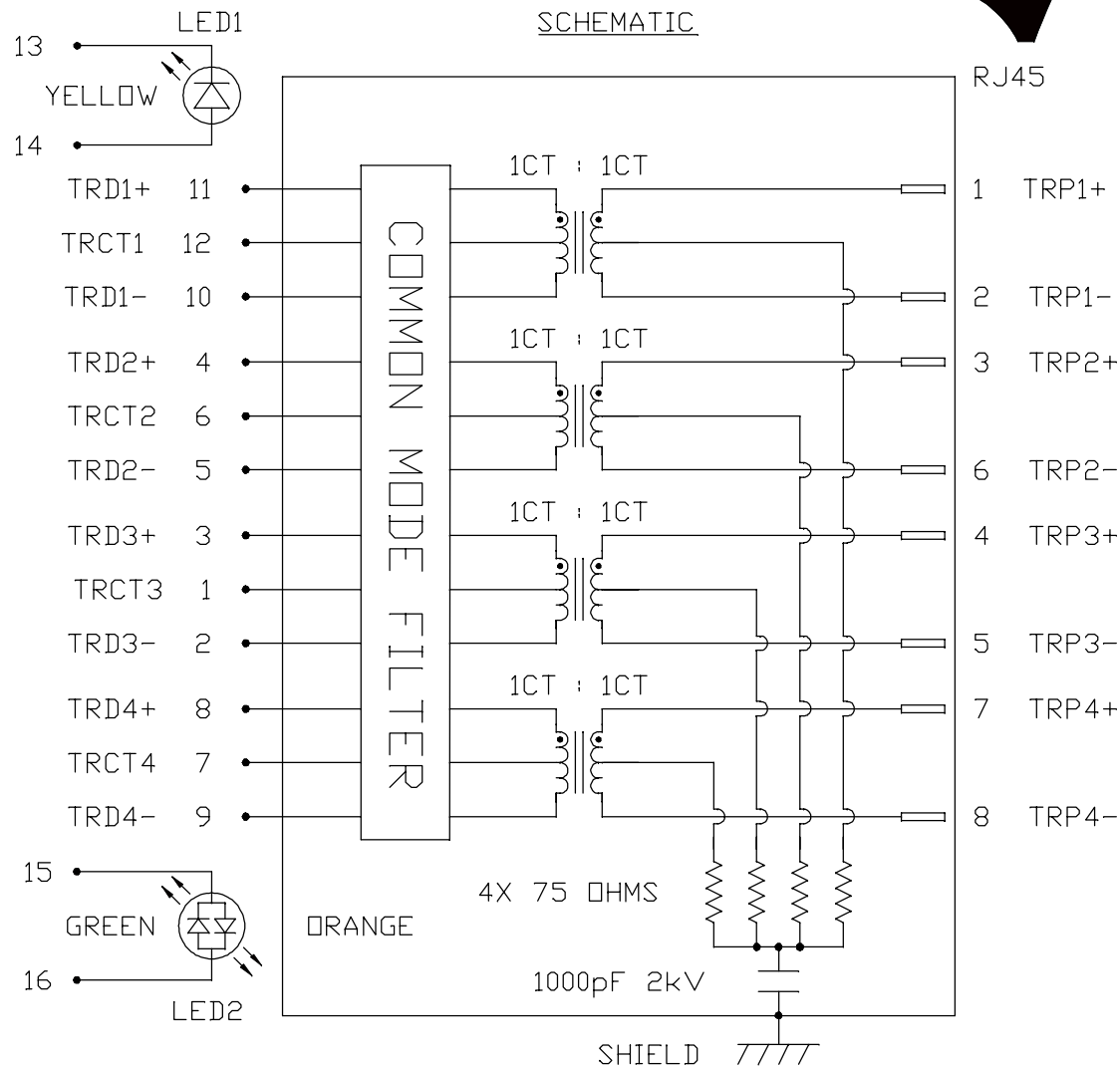
LED1

| | | |
|--------------------------|----------------|------------|
| VF (FORWARD VOLTAGE) | IF=20mA YELLOW | 2.1V TYP. |
| λD (DOMINANT WAVELENGTH) | IF=20mA YELLOW | 590nm TYP. |

LED2

| | | |
|--------------------------|---------------|------------|
| VF (FORWARD VOLTAGE) | IF=20mA GREEN | 2.2V TYP. |
| | ORANGE | 2.0V TYP. |
| λD (DOMINANT WAVELENGTH) | IF=20mA GREEN | 570nm TYP. |
| | ORANGE | 605nm TYP. |

OPERATING TEMPERATURE: 0°C TO +70°C.



RJ45

ORIGINATED BY
CHOW WANCHUNG
DATE 2017-12-07
DRAWN BY
ZHENG ZEHAD
DATE 2017-12-07

TITLE
gigabit MagJack®
(8 cores, Tab Up)
L826-1X1T-43-F
PATENTED

PART NO. / DRAWING NO.
L8261X1T43-F
FILE NAME
L8261X1T43-F_F.DWG

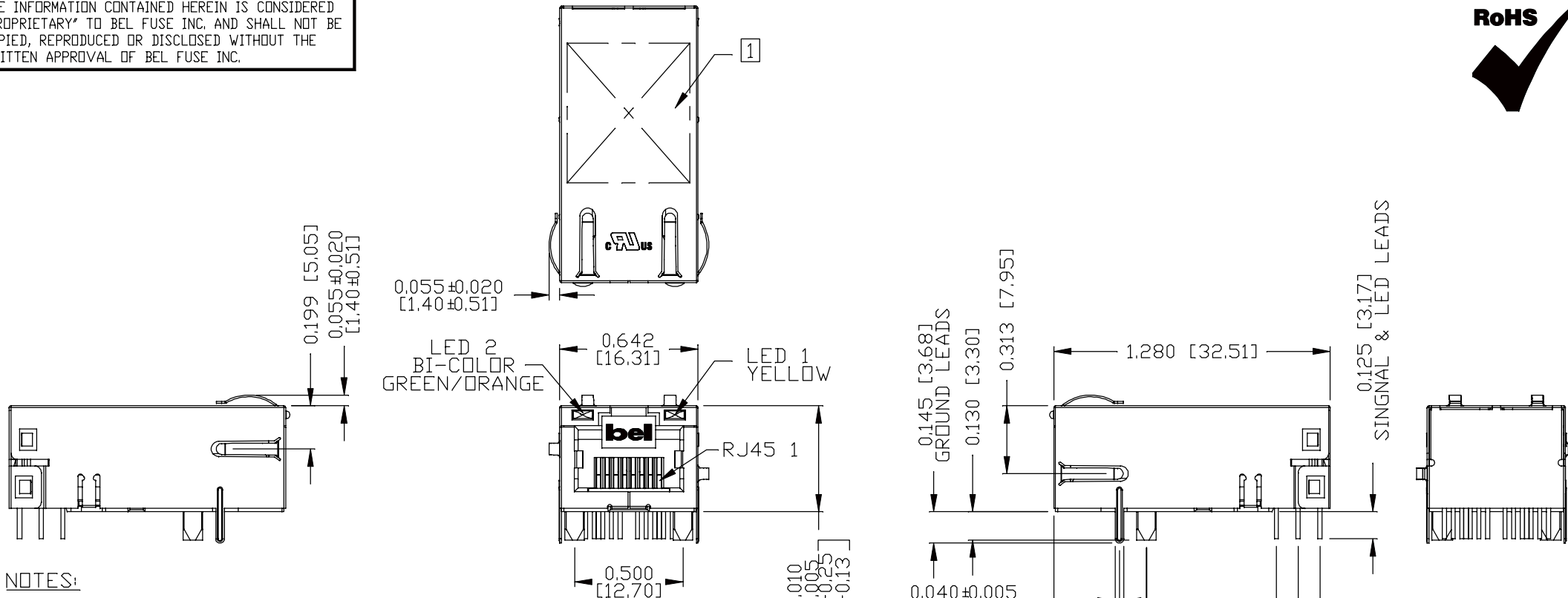
STANDARD DIM.
TOL. IN INCH
[] METRIC DIM.
AS REF.
UNIT : INCH [mm]
SCALE : N/A
SIZE : A4

REV. : F PAGE : 2



THE INFORMATION CONTAINED HEREIN IS CONSIDERED "PROPRIETARY" TO BEL FUSE INC. AND SHALL NOT BE COPIED, REPRODUCED OR DISCLOSED WITHOUT THE WRITTEN APPROVAL OF BEL FUSE INC.

RoHS



NOTES:

- PLASTIC HOUSING: THERMOPLASTIC PBT, BLACK
- FLAMMABILITY RATING UL 94V-0
- CONTACTS PLATING: 50 MICRO-INCH HARD GOLD PLATING OR EQUIVALENT.
- PINS: TIN-COATED COPPER WIRE, DIA 0.018 INCH, 100 MICRO-INCH MIN MATTE TIN, PINS ARE SOLDER DIPPED.
- METAL SHIELD: NICKEL PLATED ON COPPER ALLOY (ALL GROUND LEADS ARE SOLDER DIPPING)

1. MARK PART WITH MFG. LOGO; MFG. NAME; PART NUMBER, DATE CODE AND PATENTED.
2. JACK CAVITY CONFORMS TO FCC RULES AND REGULATIONS.

cRU us UL RECOGNIZED - FILE #E196366 AND E169987.

3. THE PRODUCT IS RoHS COMPLIANT.
4. THE PRODUCT IS PATENTED. THE PATENT NUMBER IS U.S. PAT. 7,123,117.
5. THE PART IS RECOMMENDED FOR WAVE SOLDERING. THE SUGGESTED PEAK WAVE SOLDERING CONDITION IS 260°C MAX AND 10 SECONDS MAX.

| |
|-----------------------------|
| ORIGINATED BY ANTON LIAO |
| DATE 2017-12-07 |
| DRAWN BY LI QUANKUN |
| DATE 2017-12-07 |

| |
|--|
| TITLE gigabit MagJack® (8 cores, Tab Up) |
| L826-1X1T-43-F PATENTED |

| |
|--|
| PART NO. / DRAWING NO. L8261X1T43-F |
| FILE NAME L8261X1T43-F_F.DWG |

| | |
|-------------------------------|----------------------------|
| STANDARD DIM. TOL. IN INCH | [] METRIC DIM. AS REF. |
| .X | UNIT : INCH [mm] |
| .XX | SCALE : N/A |
| .XXX | SIZE : A4 |

| | |
|--------------------|----------|
| REV. : F | PAGE : 3 |
| <p>a bel group</p> | |

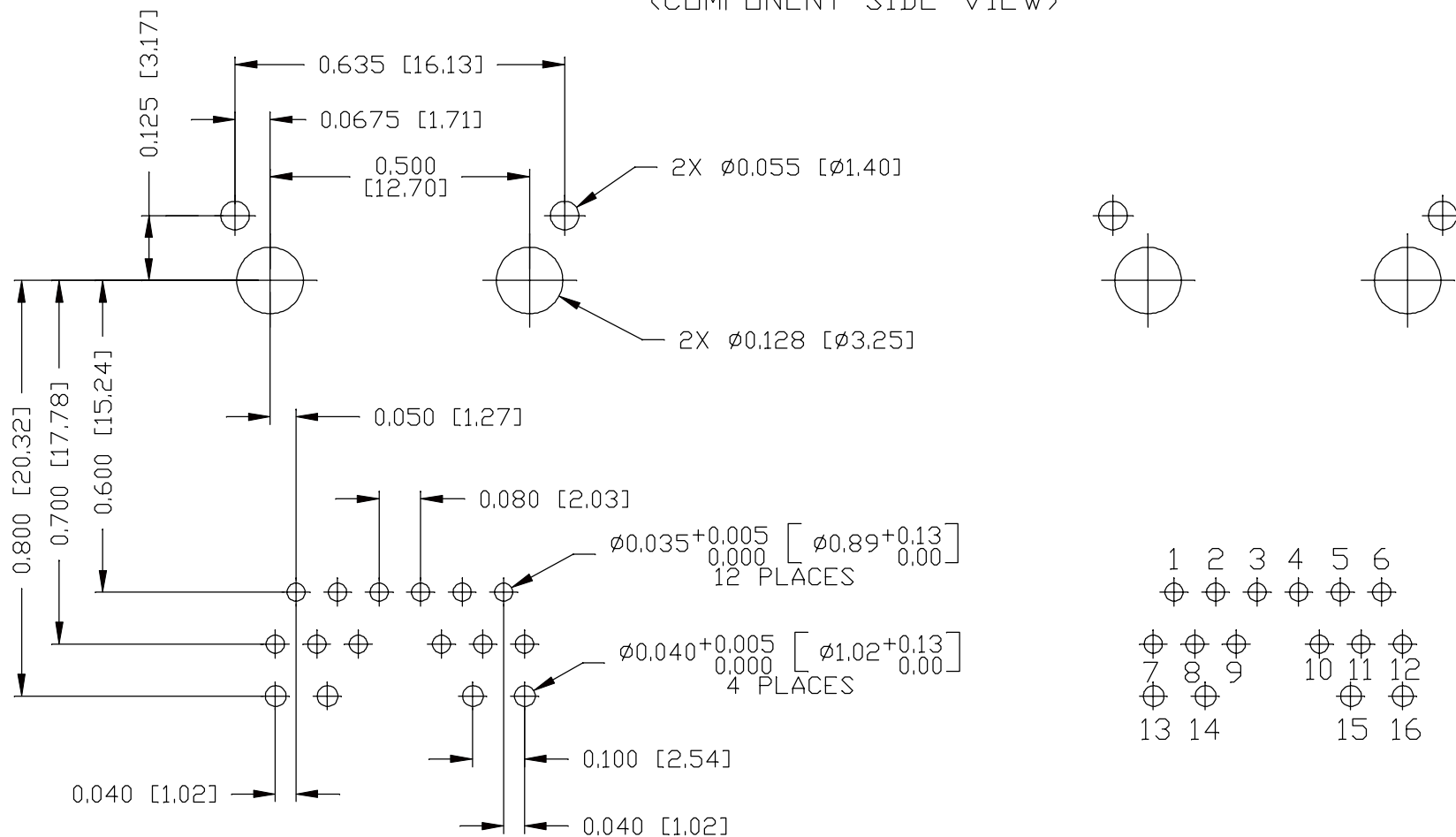
THE INFORMATION CONTAINED HEREIN IS CONSIDERED "PROPRIETARY" TO BEL FUSE INC. AND SHALL NOT BE COPIED, REPRODUCED OR DISCLOSED WITHOUT THE WRITTEN APPROVAL OF BEL FUSE INC.

RoHS



RECOMMENDED PCB FOOTPRINT

(COMPONENT SIDE VIEW)



ORIGINATED BY
ANTON LIAO
DATE 2017-12-07

TITLE
glgabit MagJack®
(8 cores, Tab Up)
L826-1X1T-43-F
PATENTED

DRAWN BY
LI QUANKUN
DATE 2017-12-07

PART NO. / DRAWING NO.
L8261X1T43-F

FILE NAME
L8261X1T43-F_F.DWG

STANDARD DIM.
TOL. IN INCH

| | |
|------|---|
| .X | / |
| .XX | |
| .XXX | |

[] METRIC DIM.
AS REF.

| |
|------------------|
| UNIT : INCH [mm] |
| SCALE : N/A |
| SIZE : A4 |

REV. : F

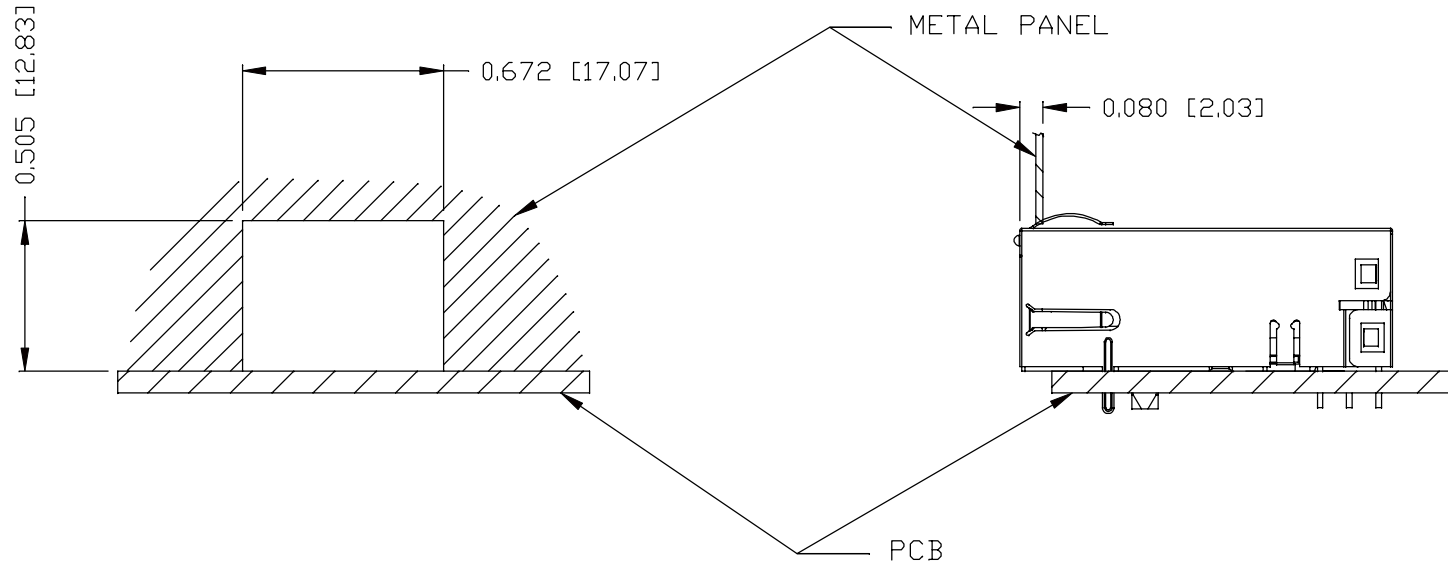
PAGE : 4



THE INFORMATION CONTAINED HEREIN IS CONSIDERED "PROPRIETARY" TO BEL FUSE INC. AND SHALL NOT BE COPIED, REPRODUCED OR DISCLOSED WITHOUT THE WRITTEN APPROVAL OF BEL FUSE INC.



SUGGESTED PANEL OPENING



NOTE:

THE DISTANCE OF PANEL INSIDE SURFACE RELATIVE TO FRONT SURFACE OF PART IS ONLY A SUGGESTION. IN CASE THIS DISTANCE IS DIFFERENT, THE REQUIRED PANEL OPENING DIMENSIONS CHANGE ACCORDINGLY.

PACKING INFORMATION

PACKING TRAY: 0200-9999-D6 (TOP)

0200-9999-D7 (BOTTOM)

PACKING QUANTITY: 40 PCS FINISHED GOODS PER TRAY

11 TRAYS (440 PCS FINISHED GOODS) PER CARTON BOX

NOTE: CARDBOARDS ARE PLACED BETWEEN LAYERS OF PACKING TRAY INSIDE CARTON BOX

(INCLUDE THE UPPERMOST AND LOWERMOST TRAY)

| | | | |
|--------|---|--------|---|
| REV. : | F | PAGE : | 5 |
|--------|---|--------|---|

| | | | | |
|--|---|---|--|------------------|
| ORIGINATED BY ANTON LIAO DATE 2017-12-07 | TITLE gigabit MagJack® (8 cores, Tab Up) L826-1X1T-43-F PATENTED | PART NO. / DRAWING NO. L8261X1T43-F FILE NAME L8261X1T43-F_F.DWG | STANDARD DIM. [] METRIC DIM. TOL. IN INCH AS REF. | |
| | | | .X | UNIT : INCH [mm] |
| | | | .XX | SCALE : N/A |
| DRAWN BY LI QUANKUN DATE 2017-12-07 | | | .XXX | ±0.004 |
| | | | SIZE : A4 | |



Looking for pricing, stock, or lifecycle information?

Click below to explore more details on WIN SOURCE:

 [View L826-1X1T-43-F on WIN SOURCE](#)

 [Bel Fuse Inc. Information](#)

Optimize Your Supply Chain with WIN SOURCE Solutions

-  Global Sourcing Solution
-  Obsolete Management
-  Cost Control Management
-  Shortage Management
-  Alternative Solution
-  Excess Inventory Management